

**Go Your  
Own Way -  
Get  
National**

**SUPER  
NATIONAL**

**National**

GALLONS

Beckmeter  
GALLONS PRICE  
THIS SALE

GALLONS

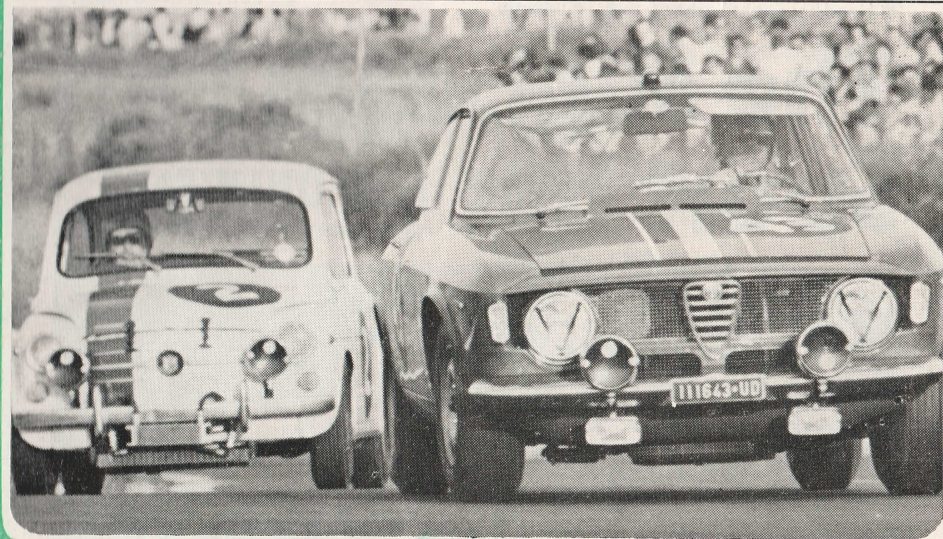
**SUPER**

Programme 2s 6d

**BRSCC  
SCOTT-BROWN  
500km EUROPEAN  
SALOON CAR  
CHAMPIONSHIP  
RACES**

Organised by the British Racing  
& Sports Car Club  
for Snetterton Circuit Ltd.

**Snetterton SUNDAY  
17th SEPTEMBER 1967**



**READ  
MOTOR RACING**

**BRITAIN'S FASTEST MOTORING MAGAZINE**

**EVERY MONTH 3s**

**OFFICIAL JOURNAL  
OF THE BRSCC**





# Has your car got all this ?

- Modern overhead camshaft engine of aluminium construction. Oversquare for longer engine life.
- Oil cooler.
- Twin carburettors.
- 4-branch exhaust manifold.
- Servo-assisted brakes.
- All-synchromesh gearbox.
- 5,000 mile service intervals.
- Full fascia panel with padded top and non-glare PVC finish.
- Hand headlight flasher.
- Ammeter. Oil pressure gauge.
- Facia glove box.
- Water temperature gauge.
- Adjustable rake front seat squabs.
- Rear armrests.
- Doors trimmed to window level.
- Wind-down windows.
- Opening front quarter-lights.
- Full-flow ventilation and heating.
- Self-parking windscreen wipers.
- Fold-flat rear seat and opening rear window for estate car loading.
- Ample space for four adults. Extra luggage space under front bonnet.
- Mean maximum speed : 90 m.p.h.
- 0-50 m.p.h. 11.1 seconds (Autocar road test).
- Overall fuel consumption : up to 43 m.p.g.

## The Sunbeam Imp Sport has **FOR ONLY £665**

Price: ex-works inc. p.t. Seat belts extra.



**SUNBEAM**  **ROOTES**

London Showrooms and Overseas Division,  
Devonshire House, Piccadilly, London, W1

*Programme*  
**MOTOR RACING**

**Sunday 17th September, 1967**

# Snetterton

The meeting is held under the General Competition Rules of the Royal Automobile Club, the Standing Supplementary Regulations of the R.A.C. and the additional Supplementary Regulations and instructions issued by the British Automobile Racing Club.

Organised by the B.R.S.C.C.

Permit Nos.: R.S. 3619  
R.S. 3697

## OFFICIALS

### STEWARDS:

**For the R.A.C.:**

J. F. Sach

**For the B.R.S.C.C.:**

P. Stasse

W. Stenger

J. Sarginson

S. J. Boshier

Cmdr. P. E. Heseltine

### JUDGES:

Major J. R. Law

B. L. Mitcham

D. Wilkinson

R. G. Playford

### CLERK OF THE COURSE:

John Aley

### ASST. CLERK OF THE COURSE:

P. C. Lacey

### SECRETARY OF THE MEETING:

Mrs. J. Aley

### RACE CONTROL:

Miss J. M. Curtis

### COURSE TELEPHONE:

Mr. and Mrs. J. Dench

### TIMEKEEPERS:

F. A. Lowe

E. B. Colman

G. S. Barritt

S. A. Nicholls

T. C. E. Clapp

H. Clenshaw

A. Lee

R. Oates

R. Connor

J. Harvey

### RACE RECORDERS:

Miss P. Wallis

Mrs. P. Griffiths

### PRESS OFFICER:

M. J. C. Harbour

### SCRUTINEERS:

H. J. Rilett

D. F. D. Smith

A. J. Pinfold

J. Atkinson

### PADDOCK OFFICE:

G. M. Bridge

Miss M. Powney

### COMMENTATORS:

A. Marsh

W. B. Barlow

P. Wren

### CHIEF MARSHAL:

I. L. Taylor

### ASST. CHIEF MARSHAL:

J. E. Sellers

### CHIEF PADDOCK MARSHAL:

R. R. Rayner

### CHIEF FIRE MARSHAL:

R. R. Harris

### STARTER:

A. G. C. Tompkins

### CHIEF START-LINE MARSHAL:

H. Driver

### MEDICAL OFFICER:

Dr. G. Coombs

### MEDICAL SERVICES:

St. John Ambulance Brigade

### MARSHALS:

Members of the B.R.S.C.C., S.M.R.C. and B.M.R.M.C.

### SCOREBOARD:

Members of the S.M.R.C.

### Promoted by:

**Motor Circuit Developments Ltd.**

### Managing Director:

John Webb

### For Snetterton Circuit Ltd.

### General Manager:

C. J. D. Lowe

### Circuit Manager:

G. Pledger

FRONT COVER—Foreign team participation in this long-distance British saloon car race is now a well-established tradition, with the valuable European Championship at stake. Here a pair of Italian invaders in Alfa Romeo and Fiat-Abarth respectively storm into Russell  
(Photograph by courtesy of MOTOR RACING magazine)

## FOR THE ATTENTION OF SPECTATORS

**Vehicles.**—Vehicles are taken into the Car Park on condition that the Club shall not be liable for loss of or damage to the vehicle, or of or to any part or accessory therefor, or of or to any animal or thing left in or about or with the vehicle in whatever way or by whatever means such loss or damage may be caused.

DOGS are NOT permitted within the area of the Snetterton Circuit.

**Prohibited area notices.**—The public are not permitted in the areas where these Notices are displayed. The fences are there for protection, and any person or persons found trespassing, or wilfully damaging trees, fences, etc., will be prosecuted.

**Litter.**—Please do not leave litter about the grounds—take it with you.

**Purchasing.**—Patrons are warned not to purchase Commodities from unauthorised persons. If molested to this effect, please report to the Police or the Official Stewards.

**AFTER THE MEETING NO TRAFFIC IS PERMITTED ON THE CIRCUIT.**

# WARNING

**MOTOR RACING IS DANGEROUS and spectators attending this track do so entirely at their own risk.**

“It is a condition of admission that all persons having any connection with the promotion and/or organisation and/or conduct of the meeting, including the owners of the land and the drivers and owners of the vehicles and passengers in the vehicles, are absolved from all liability arising out of accidents causing damage or personal injury to spectators or ticket holders”.

The Organisers reserve the right to postpone or cancel the meeting

## FLAG SIGNALS

UNION JACK .. .. .	Start.
RED .. .. .	Stop immediately.
YELLOW (Waved) .. .. .	Great danger: prepare to stop.
YELLOW (Motionless) .. .. .	Take care: danger.
BLUE (Waved) .. .. .	Another competitor is trying to overtake.
BLUE (Motionless) .. .. .	Another competitor is following closely.
YELLOW WITH RED STRIPES .. .. .	Oil on the course.
WHITE .. .. .	Ambulance or service car on the course.
BLACK (With Number) .. .. .	Car with that number must call into the pits.
BLACK and WHITE CHEQUERED	End of Race.

## LES LESTON CHAMPIONSHIP

**LES LESTON FORMULA 3 CHAMPIONSHIP**—sponsored by Les Leston, famous manufacturer of racing equipment and accessories, for club events at Brands Hatch, Mallory Park, Oulton Park and Snetterton.

Points will be awarded automatically to the first six finishers of each race as follows:  
9 points for the winner and 6 - 4 - 3 - 2 - 1 for the next five places.

The overall winner of the Championship receives £100 and a trophy and second and third placemen £75 and £50 respectively.

The next three qualifying rounds are as follows:

**September 24** BRSCC Leston Cup races, Mallory Park.  
**October 8** BRSCC Grand Prix Circuit races, Brands Hatch.  
**October 15** LMC Lakeside Trophy races, Mallory Park.

Points position prior to the September 17 at Snetterton round is as follows:

1. Harry Stiller	(Brabham-Ford BT 18)	..	68	points
	(Brabham-Ford BT 21)			
2. Alan Rollinson	(Brabham-Ford BT 21)	..	60	..
3. Tony Lanfranchi	(Brabham-Ford BT 18)	..	43	..
	(Brabham-Ford BT 21)			
	(Merlyn Ford Mk. 10)			
4. John Miles	(Lotus-Ford 41)	..	35	..
5. Morris Nunn	(Lotus-Ford 41)	..	31	..
6. Peter Gaydon	(Brabham-Ford BT 18)	..	28	..
7. Chris Williams	(Brabham-Ford BT 21)	..	24	..
8. Mike Walker	(Brabham-Ford BT 18)	..	22	..
	(Brabham-Ford BT 21)			
9. Mike Keens	(Brabham-Ford BT 21)	..	20	..
10. Derek Bell	(Brabham-Ford BT 21)	..	15	..
11. Charles Lucas	(Lotus-Ford 41)	..	14	..
12. John Hine	(Lotus-Ford 41)	..	10	..
12. Tetsu Ikuzawa	(Brabham-Ford BT 21)	..	10	..

# Come again!

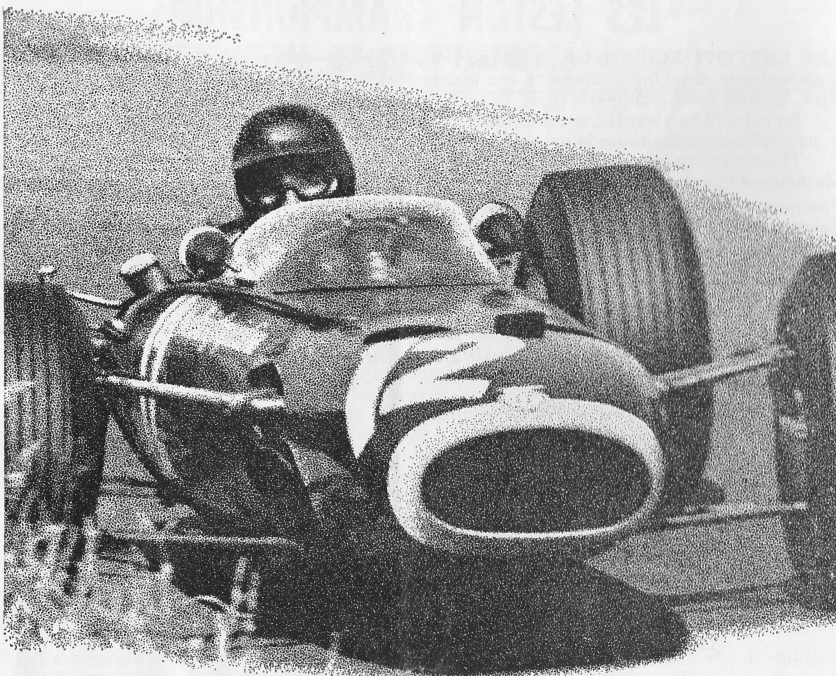
## BRSCC Formule Libre races

Sunday October 1 – 2.30 p.m.

Races for Formule Libre, Formula Ford, Sports-racing, clubman's sports, special GT, marque sports and saloon cars organised by the BRSCC

Adults 10s. Children free **CAR PARKING FREE**  
Stands and paddock free





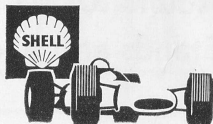
## BRM show Shell

Did you know that Shell helped to re-design the shape of the BRM's combustion chamber? The result of their tests was a shape suitable for both 4 cylinder/1 litre and 16 cylinder/3 litre power units. Shell did it gladly, and, to a point, selfishly—it was a unique opportunity to study octane ratings at 10,000 rpm.

Every time the BRM's get on the track, Shell go back to school. And what they learn from the experts they pass straight on to you. The petrol used by BRM is the same Super Shell you buy at the pumps.

**BRM's lesson '66** No less than 7 firsts out of the 8 races in the Tasman series, and another first at Monaco.

Shell work with the winners



## PROGRAMME

START 1.00 p.m.

		Laps	Start
<b>EVENT 1.</b>	LES LESTON FORMULA 3 RACE .. .. .	10	1.00 p.m.
	A round of the 1967 Les Leston Championship.		
<b>EVENT 2.</b>	THE 500 KMS. OF SNETTERTON .. .. .	115	2.30 p.m.
	The final round of the 1967 European Touring Car Challenge.		
	Approximate finish of 500 Kms. Race—6.30 p.m.		

## AWARDS

- EVENT 1.** 1st—£40. 2nd—£25. 3rd—£15. 4th—£10. 5th—£5. 6th—£5.
- EVENT 2.** Overall winner: £100.  
In each class: 1st—£50. 2nd—£30. 3rd—£20.

## ACKNOWLEDGEMENTS

St. John Ambulance Brigade.

**BREAKDOWNS:**

E. Smith & Sons Ltd., Attleborough.

R. C. Edmondson, Fakenham.

Boshier of Norwich Ltd.

# JHS

**J. Hart-Savage & Co., Ltd.**  
276 High St. North, London, E.6. 552-1310/472-6782/3  
Castle House, Castle Meadow, Norwich. 21505.

Specialists in all types of Motor Insurance  
Reputable companies only represented  
Telephone for a Quotation  
Brokers & Consultants to clubs & manufacturers



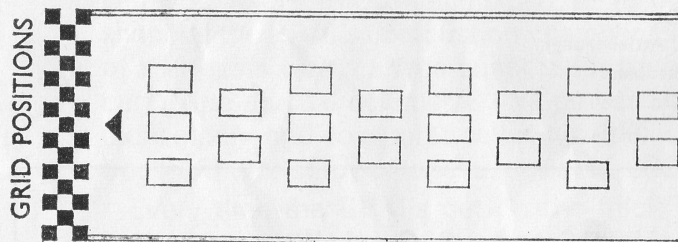
# EVENT 1

START 1.00  
10 LAPS

## LES LESTON FORMULA 3 RACE

A round of the 1967 Les Leston Formula 3 Championship

No.	ENTRANT	CAR	C.C.	COL.
1	Special Motor Racing Team .. (Dvr.: P. R. H. Gaydon)	RepcO-Brabham Ford ..	997	B/O
2	B. H. King .. .. .	RepcO-Brabham Ford ..	997	R
3	D. R. J. Morgan .. .. .	RepcO-Brabham Ford ..	997	B/Gld
4	B. Maskell .. .. .	RepcO-Brabham Ford ..	997	
5	Barrie Payne—Auto Scuderia .. (Dvr.: C. Jackson)	RepcO-Brabham Ford ..	997	Gld/B
6	E. Ward .. .. .	Lotus 20 Ford .. .. .	997	B
7	A. Page .. .. .	Lotus 35 Ford .. .. .	997	B/W
8	Lotus Components .. .. . (Dvr.: J. Miles)	Lotus 41 Ford .. .. .	997	W/G
9	J. Dobson .. .. .	Cooper 72/76 .. .. .	997	B
10	McKechnie Racing Organisation .. (Dvr.: R. M. Keele)	Cooper 83 .. .. .	997	B
11	J. Andrews .. .. .	Merlyn Mk. 9 .. .. .	997	G
12	Ken Bass—Team M.R.S. .. .. . (Dvr.: A. Lanfranchi)	Merlyn Mk. 10 .. .. .	997	Y
14	M. Nunn .. .. .	Lotus 41 .. .. .	997	R
15	T. Schenker .. .. .	Lotus-Ford .. .. .	997	G
16	Charles Lucas (Eng.) Ltd. .. .. . (Dvr.: H. Stiller)	RepcO-Brabham Ford ..	997	R/W/B



# RESULTS

### Overall Results:

1st..... 2nd..... 3rd.....

4th..... 5th..... 6th.....

Winner's Time..... Speed.....m.p.h.

Fastest Lap: Car No..... at.....m.p.h.

### EVENT ONE—LAP CHART

Pos. ▼	1	2	3	4	5	6	7	8	9	10
1										
2										
3										
4										
5										
6										
7										
8										
9										
10										
11										
12										
13										
14										
15										
16										
17										
18										
19										
20										



# EVENT 2

START 2.30  
115 LAPS

## SCOTT-BROWN 500 KM. EUROPEAN SALOON CAR CHAMPIONSHIP RACES

The last round of the 1967 European Touring Car Challenge

No.	ENTRANT AND DRIVERS	CAR	C.C.	NAT.
<b>Class "A" Up to 850 c.c.</b>				
1	VAN Racing Team (Dvr.: G. van Lennep)	Steyr Puch 650 TR	649	NL
2	VAN Racing Team (Dvr.: W. Frye) (2nd Dvr.: U. Schuppe)	Steyr Puch 650 TR	655	D
3	Magyar Autoklub (Dvr.: I. Hollos)	Steyr Puch 650 TR	660	H
4	Y. Pillonel	BMW 700 S	697	CH
5	Team Amulett (Dvr.: S. Johansson) (2nd Dvr.: S. Larsson)	Saab 96 Sport	841	S
6	C. J. Alford (Reserve) (Dvr.: M. C. Bennett) (2nd Dvr.: Entrant)	Saab 96 Sport	841	GB
7	M. Reano	Fiat Abarth 850 T.C.	847	I
8	Racing Team S.A.S. (Dvr.: J. van Osch) (2nd Dvr.: H. Veder)	Fiat Abarth 850 T.C.	847	NL
9	Scuderia Del Lario (Dvr.: F. Galli)	Fiat Abarth 850 T.C.	847	I
10	W. Kauhsen (Dvr.: K. Scholl) (2nd Dvr.: W. Zanders)	Fiat Abarth 850 T.C.	847	D
11	D. van Yperen	Fiat Abarth 850 T.C.	847	NL
12	J. A. Anstead (Dvr.: Entrant) (2nd Dvr.: G. A. Anstead)	Fiat Abarth 850 T.C.	847	GB
14	"Bagrit"	Panhard 24 CT	848	F
<b>Class "B" 851 c.c. to 1000 c.c.</b>				
19	A. Hezermanns (Res. Dvr.: W. Kauhsen)	Fiat Abarth 1000 Berlina	982	NL/D
20	Scuderia del Lario (Dvr.: A. Merzario) (2nd Dvr.: "Pal Joey")	Fiat Abarth 1000 Berlina	982	I
21	Scuderia Del Lario (Dvr.: "Pal Joey") (2nd Dvr.: A. Merzario)	Fiat Abarth 1000 Berlina	982	I
22	R. Deinum (Dvr.: Entrant) (2nd Dvr.: F. Lubin)	Fiat Abarth 1000 Berlina	982	NL
23	W. Kauhsen (Dvr.: Entrant) (2nd Dvr.: Freiherr K. von Wendt)	Fiat Abarth 1000 Berlina	982	D
24	S. Uberti (Dvr.: Entrant) (2nd Dvr.: "Pam") (Res. Dvr.: M. Zanetti)	Fiat Abarth 1000 Berlina	982	I
25	M. Zanetti (Dvr.: Entrant) (2nd Dvr.: S. Uberti) (Res. Dvr.: E. Swart)	Fiat Abarth 1000 Berlina	982	I
26	Racing Team S.A.S. (Dvr.: E. Swart) (2nd Dvr.: "Matich")	Fiat Abarth 1000 Berlina	982	NL
27	G. Lado (Dvr.: "Matich") (2nd Dvr.: E. Swart) (Res. Dvr.: M. Zanetti)	Fiat Abarth 1000 Berlina	982	I
28	G. Edelhoff (Dvr.: Entrant) (2nd Dvr.: H. F. Ranke)	Fiat Abarth 1000 Berlina	982	D

### EVENT 2—continued

No.	ENTRANT AND DRIVER	CAR	C.C.	NAT.
29	Abarth Corse Deutschland (Reserve) (Dvr.: H. Hessel) (2nd Dvr.: M. Kranefuss)	Fiat Abarth 1000 Berlina	982	D
30	Langrop Engineering (Dvr.: J. Wales) (2nd Dvr.: H. C. Ratcliffe) (Res. Dvr.: P. C. Hughes)	N.S.U. TTS	996	GB
31	Barnet Motor Co. Ltd. (Dvr.: G. D. R. Marshall)	Austin Cooper "S"	999	GB
32	E. J. Portlock (Reserve) (Dvr.: Entrant) (2nd Dvr.: I. J. Alexander)	Austin Cooper "S"	999	GB
<b>Class "C"—1001 c.c. to 1300 c.c.</b>				
40	H. F. Squadra Corse Lancia (Dvr.: L. Cella) (2nd Dvr.: G. Facetti) (Res. Dvr.: S. Munari)	Lancia Fulvia H.F.	1216	I
41	J. M. Dooley (Dvr.: R. E. J. Wells) (2nd Dvr.: To be nominated)	Alfa Romeo Giulietta T.I.	1290	GB/RSR
42	D. Mohr (Dvr.: H. Eiteneuer) (2nd Dvr.: Entrant)	Alfa Romeo G.T. Junior	1290	D
43	The Vienna Sports Car Club (Dvr.: Dr. F. X. Schmollerl)	Morris Cooper "S"	1275	A
44	D. L. Gibb (Reserve)	Morris Cooper "S"	1275	GB
45	G. P. Cayley (Dvr.: Entrant) (2nd Dvr.: J. W. Akersloot)	Morris Cooper "S"	1293	GB/NL
46	P. S. de Banks (Reserve)	Morris Cooper "S"	1293	GB
47	D. R. Moore (Dvr.: K. Costello) (2nd Dvr.: A. Poole)	Austin Cooper "S"	1275	GB
48	D. R. Moore (Dvr.: A. Hedges) (2nd Dvr.: M. Campbell-Cole)	Austin Cooper "S"	1275	GB
49	R. C. Finegan	Austin Cooper "S"	1275	USA
50	S. Green (Dvr.: P. Lague) (2nd Dvr.: I. Bax)	Austin Cooper "S"	1293	GB
51	R. Heavens (Dvr.: Entrant) (2nd Dvr.: M. Pigneguy)	Austin Cooper "S"	1293	GB
52	C. B. Mynott (Dvr.: M. R. B. Clarke) (2nd Dvr.: Entrant)	Austin Cooper "S"	1293	GB
53	McKechnie Racing Organisation (Reserve) (Dvr.: B. Williams)	Austin Cooper "S"	1293	GB
54	St. Christopher Motor Services (Reserve) (Dvr.: G. Janzen) (2nd Dvr.: P. Wicks)	Austin Cooper "S"	1293	GB
55	D. Mohr (Dvr.: Entrant) (2nd Dvr.: H. Eiteneuer) (Res. Dvr.: F. Reynolds)	Alfa Romeo GT Junior	1290	D

## RESULTS

Overall Winner: 1st..... 2nd..... 3rd..... 4th.....

Class A: 1st..... 2nd..... 3rd..... Class B: 1st..... 2nd..... 3rd.....

Class C: 1st..... 2nd..... 3rd.....

Winners' Time..... Speed.....m.p.h.

Fastest Lap: Car No..... Time..... Speed.....m.p.h.



# POSTERS

If you can display posters of future events at Snetterton, please send your name and address to Snetterton Circuit Ltd., Snetterton, Norwich, NOR 10X, Stating No. required.

## TAKE HOME A CIRCUIT SOUVENIR

AVAILABLE TODAY FROM THE CIRCUIT OFFICE  
NEAR THE CLUB HOUSE IN THE PADDOCK

- Coloured transfers of circuit emblems suitable for cars, motor cycles, crash helmets, etc. . . . . 1s. 0d.
- Plastic triangular car window pennants with circuit map . . . . . 6d.
- Metal lapel badges of circuit emblems . . . . . 3s. 0d.
- Metal car badges incorporating circuit map . . . . . 17s. 6d.
- Chequered pencils with circuit name . . . . . 7d.

Most goods can be posted for an additional charge of 6d.

Car badges and ashtrays 1s. Glasses 1s. 6d.

For full details of advertising in Snetterton programmes write or telephone the

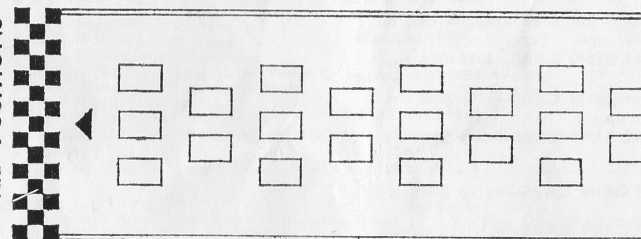
Advertisement Director:

**Knightsbridge Publications,  
(1962) Limited  
3-4, St. Andrews Hill,  
London, E.C.4.  
Tel: LUDgate 8842**

### EVENT TWO—LAP CHART

Pos. ▼	10	20	30	40	50	60	70	80	90	100	110	114
1												
2												
3												
4												
5												
6												
7												
8												
9												
10												
11												
12												
13												
14												
15												
16												
17												
18												
19												
20												

GRID POSITIONS





# LAP RECORDS

Driver	Car and c.c.	Time	Speed (m.p.h.)
<b>OUTRIGHT CIRCUIT RECORD</b>			
Jackie Stewart	1594 Matra-Cosworth-Ford M55	1 m. 28.2 s.	110-61
Jochen Rindt	1594 Brabham-Cosworth-Ford BT23		
Graham Hill	1594 Lotus-Cosworth-Ford 48		
<b>FORMULE LIBRE</b>			
Robin Darlington	5967 Lola-Chevrolet T70 Mk. 2	1 m. 36.2 s.	101-41
<b>RACING CARS—Formula 2</b>			
Jackie Stewart	1594 Matra-Cosworth-Ford M55	1 m. 28.2 s.	110-61
Jochen Rindt	1594 Brabham-Cosworth-Ford BT23		
Graham Hill	1594 Lotus-Cosworth-Ford 48		
<b>RACING CARS—Formula 3</b>			
Chris Williams	997 Brabham-Ford BT21	1 m. 38.2 s.	99-35
Charles Lucas	997 Lotus-Ford 41		
<b>RACING CARS—Formula Ford</b>			
Malcolm Payne	1498 Lotus 31	1 m. 49.0 s.	89-51
<b>SPORTS-RACING CARS—up to 1150 c.c.</b>			
John Corfield	998 Lotus-Cosworth 23	1 m. 48.4 s.	90-00
<b>SPORTS-RACING CARS—over 1150 c.c.</b>			
Denny Hulme	5967 Lola-Chevrolet T70 Mk. 2	1 m. 33.8 s.	104-01
<b>GROUP 4 SPORTS CARS—up to 1150 c.c.</b>			
Sir Jon Samuel	1148 Diva GT Ford	1 m. 51.6 s.	87-42
<b>GROUP 4 SPORTS CARS—1151-1600 c.c.</b>			
Bill Dryden	1594 Lotus Elan	1 m. 44.6 s.	93-27
<b>GROUP 4 SPORTS CARS—1601-2500 c.c.</b>			
Ben Pon	1991 Porsche Carrera 6	1 m. 37.8 s.	99-76
Tony Dean	1991 Porsche Carrera 6		
<b>GROUP 4 SPORTS CARS—over 2500 c.c.</b>			
Paul Hawkins	4727 Ford GT40	1 m. 33.8 s.	104-01
<b>SPECIAL GRAND TOURING CARS—up to 1150 c.c.</b>			
Roger Nathan	998 Nathan GT Hillman	1 m. 45.2 s.	92-74
<b>SPECIAL GRAND TOURING CARS—1151-1600 c.c.</b>			
John Miles	1594 Lotus 47 Ford	1 m. 40.2 s.	97-37
<b>SPECIAL GRAND TOURING CARS—1601-2500 c.c.</b>			
Digby Martland	1991 Chevron GT BMW	1 m. 40.0 s.	97-56
<b>SPECIAL GRAND TOURING CARS—over 2500 c.c.</b>			
Ron Fry	4727 Ford GT40	1 m. 39.2 s.	98-35
<b>CLUBMEN'S SPORTS CARS—up to 1000 c.c.</b>			
Roger Stallwood	997 Terrier-Ford Mk. 2	1 m. 49.2 s.	89-34
<b>CLUBMEN'S SPORTS CARS—1001-1500 c.c.</b>			
Harry McLaughlin	1498 Chevron-Ford	1 m. 45.8 s.	92-21
Howard Heerey	1498 Chevron-Ford		
<b>MARQUE SPORTS CARS—up to 1150 c.c.</b>			
John Britten	1147 M.G. Midget	1 m. 52.0 s.	87-11
<b>MARQUE SPORTS CARS—1151-2000 c.c.</b>			
Roger Enever	1293 M.G. Midget	1 m. 51.4 s.	87-58
<b>MARQUE SPORTS CARS—2001-3000 c.c.</b>			
John Gott	2982 Austin-Healey 3000	1 m. 50.8 s.	88-05
<b>MARQUE SPORTS CARS—over 3000 c.c.</b>			
Warren Pearce	3781 Jaguar E-type	1 m. 45.8 s.	92-21
<b>GROUP 5 SALOON CARS—up to 1000 c.c.</b>			
John Fitzpatrick	997 Ford Anglia	1 m. 52.2 s.	86-95
<b>GROUP 5 SALOON CARS—1001-1300 c.c.</b>			
John Rhodes	1293 Mini-Cooper "S"	1 m. 50.6 s.	88-21
<b>GROUP 5 SALOON CARS—1301-2000 c.c.</b>			
Graham Hill	1594 Lotus Ford Cortina	1 m. 46.6 s.	91-52
<b>GROUP 5 SALOON CARS—over 2000 c.c.</b>			
Frank Gardner	4727 Ford Falcon	1 m. 41.6 s.	96-02
Jack Oliver	4727 Ford Mustang		
<b>SPECIAL SALOON CARS—up to 850 c.c.</b>			
Gerry Marshall	848 Mini	2 m. 0.2 s.	81-17
<b>SPECIAL SALOON CARS—851-1000 c.c.</b>			
Alan Peer	997 Ford Anglia	1 m. 50.0 s.	88-69
<b>SPECIAL SALOON CARS—1001-1300 c.c.</b>			
Ken Costello	1298 Mini-Cooper "S"	1 m. 48.5 s.	89-92
<b>SPECIAL SALOON CARS—over 1300 c.c.</b>			
Roger Taylor	4727 Ford Mustang	1 m. 45.4 s.	92-56

# LAP SPEED TABLE

## SNETTERTON SPEED TABLE 1 LAP—2.71 MILES

m.s.		m.p.h.		m.s.		m.p.h.		m.s.		m.p.h.		m.s.		m.p.h.	
1.30	0.108-40	1.38	4.99-15	1.46	8.91-35	1.55	2.84-69	2.03	6.78-93	2.12	0.73-91				
	2.108-16		6.98-95		1.47-0.91-18		4.84-54		8.78-81		2.73-80				
	4.107-92		8.98-75		2.91-01		6.84-39		2.04-0.78-68		4.73-69				
	6.107-68		1.39-0.98-55		4.90-84		8.84-25		2.78-55		6.73-58				
	8.107-45		2.98-35		6.90-67		1.56-0.84-10		4.78-42		8.73-46				
	1.31-0.107-21		4.98-15		8.90-50		2.83-96		6.78-30		2.13-0.73-35				
	2.106-97		6.97-95		1.48-0.90-33		4.83-81		8.78-17		2.73-24				
	4.106-74		8.97-76		2.90-17		6.83-67		2.05-0.78-05		4.73-13				
	6.106-50		1.40-0.97-56		4.90-00		8.83-53		2.77-92		6.73-02				
	8.106-28		2.97-37		6.89-83		1.57-0.83-39		4.77-80		8.72-92				
	1.32-0.106-04		4.97-17		8.89-67		2.83-24		6.77-68		2.14-0.72-81				
	2.105-81		6.96-98		1.49-0.89-51		4.83-10		8.77-55		2.72-70				
	4.105-58		8.96-79		2.89-34		6.82-96		2.06-0.77-43		4.72-59				
	6.105-36		1.41-0.96-59		4.89-18		8.82-82		2.77-31		6.72-48				
	8.105-13		2.96-40		6.89-02		1.58-0.82-68		4.77-18		8.72-37				
	1.33-0.104-90		4.96-21		8.88-85		2.82-54		6.77-06		2.15-0.72-27				
	2.104-68		6.96-02		1.50-0.88-69		4.82-40		8.76-94		2.72-16				
	4.104-45		8.95-84		2.88-53		6.82-26		2.07-0.76-82		4.72-05				
	6.104-23		1.42-0.95-65		4.88-37		8.82-12		2.76-70		6.71-95				
	8.104-00		2.95-46		6.88-21		1.59-0.81-98		4.76-58		8.71-84				
	1.34-0.103-79		4.95-27		8.88-05		4.81-85		6.76-46		2.16-0.71-74				
	2.103-57		6.95-09		1.51-0.87-89		4.81-71		8.76-34		2.71-63				
	4.103-35		8.94-90		2.87-73		6.81-57		2.08-0.76-22		4.71-53				
	6.103-13		1.43-0.94-72		4.87-58		8.81-44		2.76-10		6.71-42				
	8.102-91		2.94-54		6.87-41		2.00-0.81-30		4.75-98		8.71-32				
	1.35-0.102-70		4.94-35		8.87-26		2.81-17		6.75-86		2.17-0.71-21				
	2.102-48		6.94-17		1.52-0.87-11		4.81-03		8.75-75		2.71-11				
	4.102-26		8.93-99		2.86-95		6.80-90		2.09-0.75-63		4.71-00				
	6.102-05		1.44-0.93-81		4.86-80		8.80-76		2.75-51		6.70-90				
	8.101-84		2.93-63		6.86-64		2.01-0.80-63		4.75-39		8.70-80				
	1.36-0.101-63		4.93-45		8.86-49		2.80-50		6.75-28		2.18-0.70-70				
	2.101-41		6.93-27		1.53-0.86-34		4.80-36		8.75-16		2.70-59				
	4.101-20		8.93-09		2.86-18		6.80-23		2.10-0.75-05		4.70-49				
	6.100-99		1.45-0.92-91		4.86-03		8.80-10		2.74-93		6.70-39				
	8.100-79		2.92-74		6.85-88		2.02-0.79-97		4.74-82		8.70-29				
	1.37-0.100-58		4.92-56		8.85-73		2.77-84		6.74-70		2.19-0.70-19				
	2.100-37		6.92-39		1.54-0.85-58		4.79-71		8.74-59		2.70-09				
	4.100-16		8.92-21		2.85-43		6.79-58		2.11-0.74-47		4.69-99				
	6.99-96		1.46-0.92-04		4.85-28		8.79-45		2.74-36		6.69-89				
	8.99-76		2.91-86		6.85-13		2.03-0.79-32		4.74-25		8.69-79				
	1.38-0.99-55		4.91-69		8.84-98		2.79-19		6.74-13		2.20-0.69-69				
	2.99-35		6.91-52		1.55-0.84-84		4.79-06		8.74-02						

## SNETTERTON 1967 FIXTURES

DATE	EVENT	RACES	CHARGES
24 Sept.	Bantam Motor Cycle Races	M/Cs.	5/-A, CF, (R), 2/6Pr
1 Oct.	BRSCC F. Libre Car Races	FL/S/GT/T	10/-A, CF, (R), 2/6Pr
8 Oct.	Thames Estuary Auto Club Races	FL/S/GT/T	7/6A, CF, (R), 2/6Pr
15 Oct.	October Trophy Motor Cycle Races	All Classes	10/-A, CF, (R), 2/6Pr
22 Oct.	BMCRC Clubman's Motor Cycle Races	All Classes	5/-A, CF, (R)
28 Oct.	Bantam Motor Cycle Racing	M/Cs.	5/-A, CF, (R)
29 Oct.	Cambridge University A.C. Sprint	S/GT/T	3/6A, CF, (R)
4/5 Nov.	Vespa Club of Great Britain 12-hour Race	Scoter	No charge

**KEY**  
A—Adults S—Stands Pr—Programme CF—Accompanied  
and School Uniform Children Free P—Paddock  
(R)—Stands and Paddock free

**Parking free at all meetings**  
All the above information is given in good faith at the time of publication



# YOU TOO CAN DRIVE AT 70 +

**ON ONE OF BRITAIN'S  
LEADING RACE TRACKS**



**BY JOINING THE  
Brands Hatch Motor Club  
Snetterton Motor Racing Club  
Mallory Park Motor Club**



**For 2 or 3 guineas a year you  
can experience something  
new in Motor Club enjoyment**

## DRIVE ON A RACE TRACK

When you join a circuit car club you will be sent three tickets each entitling you to 20 laps driving your own silenced road car round the Brands Hatch, Snetterton and Mallory Park race tracks. All three circuits are open for this purpose on Tuesday and Thursday evenings each week during the summer, and on certain weekend days throughout the year. Each track is properly supervised and now has permanent catering services. Members are covered automatically by legal liability insurance and low-cost personal accident insurance is available as an optional extra.

## A CIRCUIT CLUBHOUSE

Close to the paddock at Brands Hatch and Snetterton, and to the hairpin at Mallory Park, members have their own modern-style motoring pubs and clubhouse. They are open most evenings, weekdays, weekends, and on all practice and race days. Apart from their attractive bars, set against a background of motor badges and paintings, the clubhouses are also equipped with music and amusements. They are also the scene of film shows, dances and cocktail parties.

## YOUR OWN YEAR BOOK

Through the post each December – or immediately if you join while stocks last – you will receive a bound copy of *Motor Racing Year* (post free value 22/6.) This splendid production, edited by the staff of the magazine *Motor Racing* reviews the previous year's racing scene and is packed with motor sport data and exclusive hitherto unpublished photographs.

In addition, regular news letters will keep you informed of club news, facilities and social events.

## HOW TO JOIN

Write to the appropriate club giving your full name and address (block capitals), and a full membership application form with further details concerning track use and season brochures will be forwarded immediately.

The Secretary: Brands Hatch Motor Club,  
c/o Brands Hatch Circuit Ltd., Fawkham,  
Dartford, Kent. Tel.: West Ash 331

The Secretary: Mallory Park Motor Club,  
c/o Mallory Park Circuit Ltd., Kirkby Mallory,  
Leicester. Tel.: Earl Shilton 3306

The Secretary: Snetterton Motor Racing  
Club, c/o Snetterton Circuit Ltd., Norwich,  
Norfolk.  
NOR 10X. Tel.: Quidenham 303

## SKID ROAD

You also receive three more tickets each entitling you to a weekend practice session on the Brands Hatch skid road, built specially for the high Performance Course of the British School of motoring. In your own car you can spin safely on the special mastic surface through 360 degrees from only 20 m.p.h.

## CONSIDER THESE BENEFITS

## CHEAPER SPECTATING

You can also purchase, at a guinea less than the public rates, low-cost car race spectator season brochures for yourself, one other male, and up to four ladies, at one or all of the three circuits involved. These admit your car to any public park and all brooch holders to the paddock at Mallory and Snetterton and any normal viewing area. At Brands Hatch a season brooch costs 5 gns. for adult males, and 4 gns. only for ladies, compared with individual admission tickets totalling more than £18 in yearly cost. At Mallory Park the brochures cost 4 gns. for males and 3 gns. for ladies for over £11 normal value. At Snetterton 3 gns. for males and 2 gns. for ladies for over £9 normal value.

## MEMBER OF THREE

Membership of any one circuit car club allows you and up to three guests to use the clubhouses at Mallory Park, Snetterton and Brands Hatch. Similarly, members of any one circuit car club are also automatically members of the other two, and are entitled to exchange skid-road and race-track tickets (when applicable), to use the other facilities at concession rates, and to enjoy full clubhouse privileges.

## AGAIN AT 70 +

As a member of a circuit car club you can again extract the maximum in speed and roadholding from your car. At Brands, Mallory and Snetterton you can enjoy real performance on roadways designed to bring out the best in driving skill and engineering. And you can do so within safety barriers, wide run-offs, and without the risk of oncoming traffic. And afterwards – you can relax in the clubhouse with people with interests just like yours.

## JOIN TODAY

For 3 gns. a year (2 gns. if a B.R.S.C.C. member) you can enjoy all the advantages described. (Track membership.) For 2 gns. a year you can enjoy all the advantages described, except drive on the tracks and skid roads. (Social membership.) Each circuit car club has its own distinctive emblem which is reproduced on transfers, car and lapel badges, and on club ties.





# The British Racing and Sports Car Club

## The National Club for the Enthusiast

- **"Motor Racing"**. This National Magazine free each month.
- **Race Meetings**. Special facilities for spectators.
- **Club Nights**. Monthly Film Shows, Talks, etc.
- **Racing Car Show**. Free admission and special Members' Lounge.
- **Club Insignia**. Car, Lapel and Blazer Badges, Ties, etc.
- **Circuit Racing**. Throughout the year at nine different tracks.
- **Provincial Centres**. Covering the whole country.
- **Dinner Dances and Midnight Film**. Grand social occasions.
- **Club Shop**. Open during Brands Hatch events.

### TO JOIN

ANNUAL SUBSCRIPTION .. .. .	£3 3 0
ENTRY FEE .. .. .	£1 1 0
ON APPLICATION .. .. .	£4 4 0

If you wish to be placed on the Racing Register an additional fee of 10/- is payable.

Please send for further details and membership application form to:-

**BRITISH RACING AND SPORTS CAR CLUB LTD.**

EMPIRE HOUSE, Chiswick High Road, London W.4.

Telephone: 995-0345

