

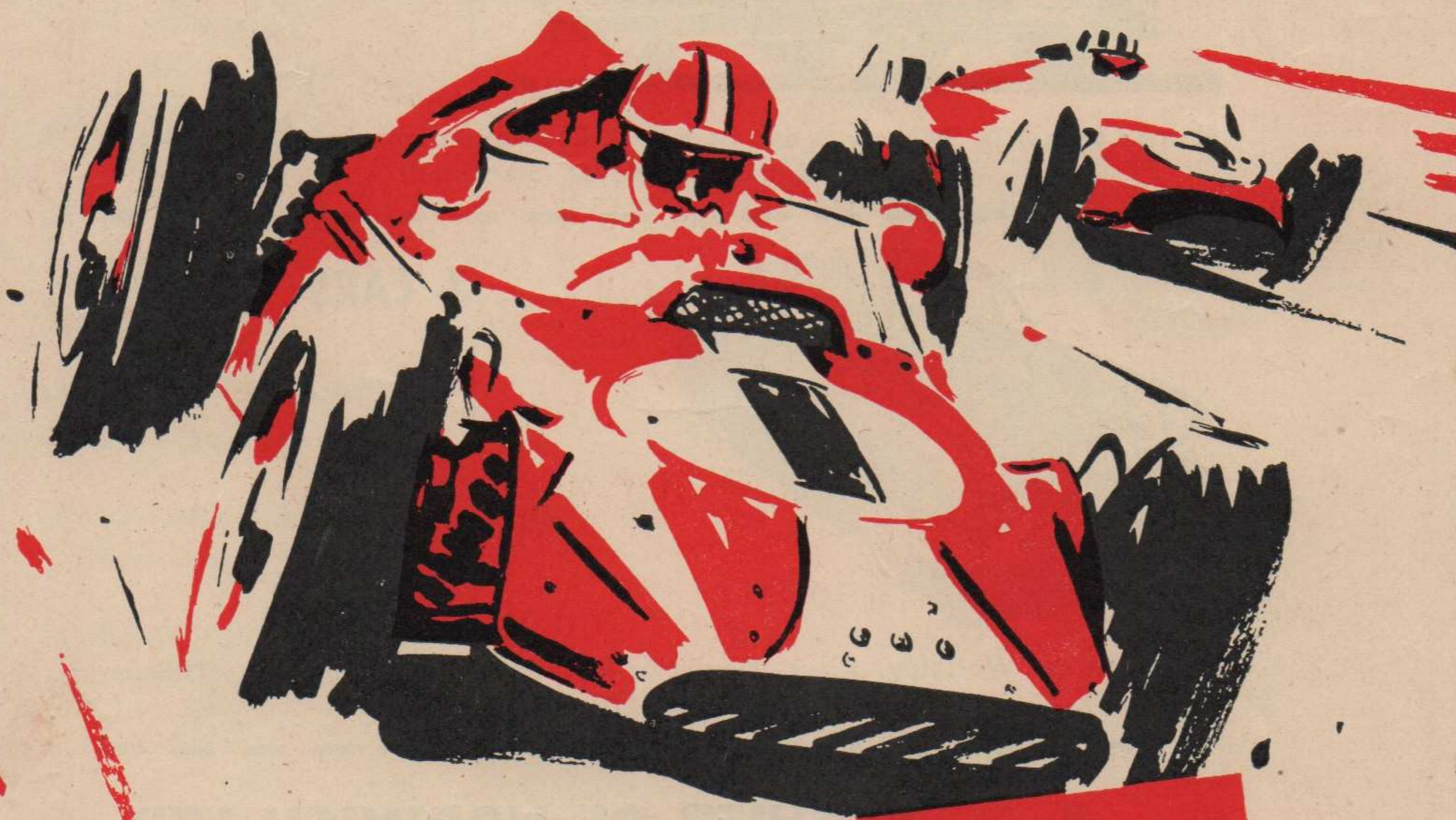
**SNETTERTON MOTOR RACING CIRCUIT**

**SCOTT-BROWN MEMORIAL  
TROPHY MEETING**

**Sunday, 23rd July, 1961**

**OFFICIAL PROGRAMME 2/6**

ORGANISED BY THE SNETTERTON MOTOR RACING CLUB



**Fridays 1s.**

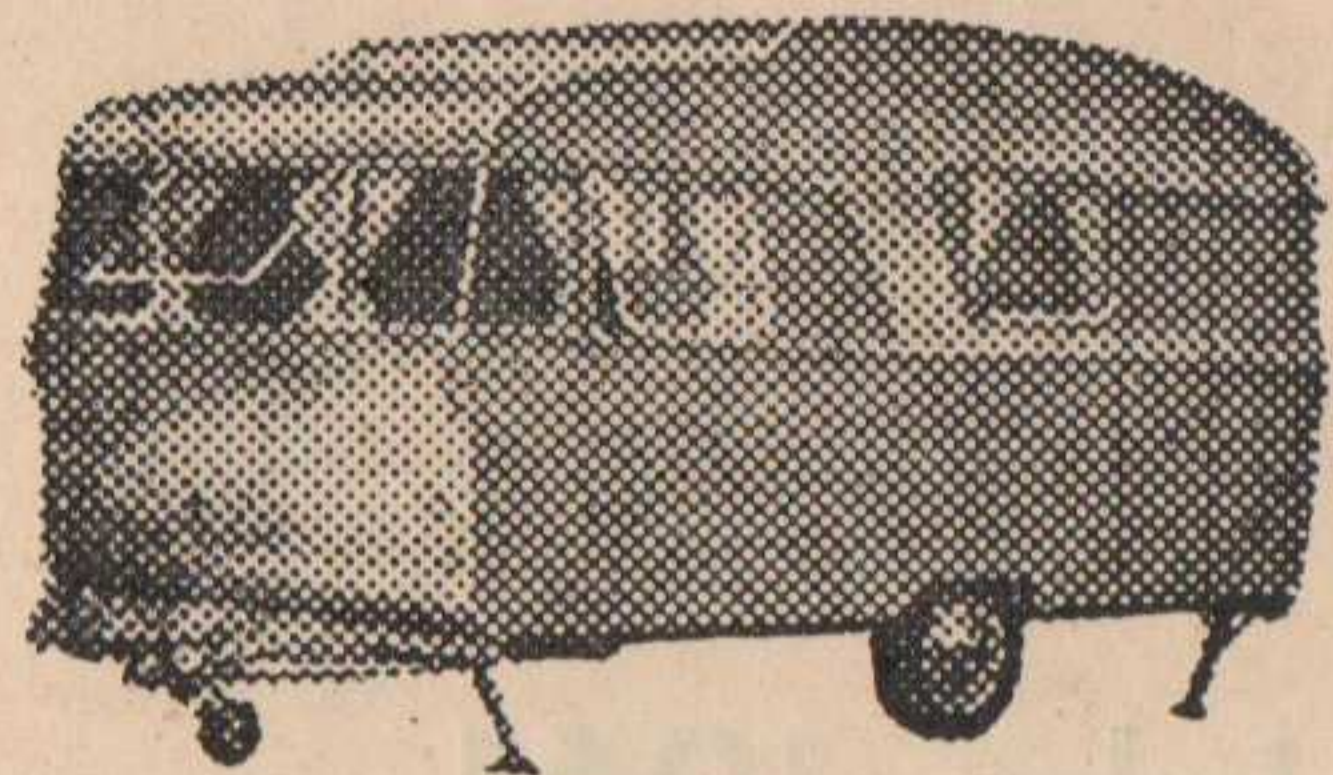
**The Autocar**

**the unchallenged leader**



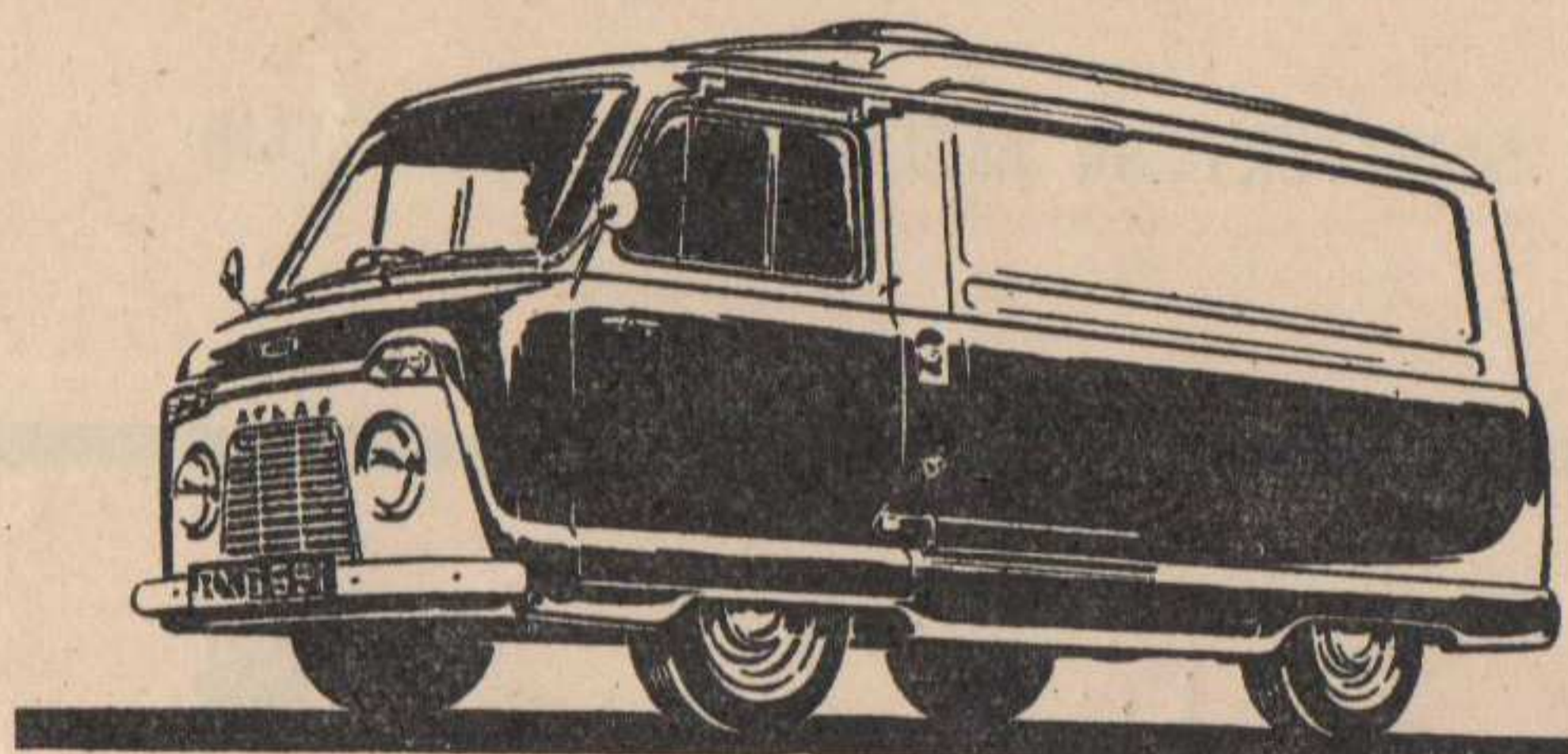
**BOSHIER**

for  
**CARAVANS**



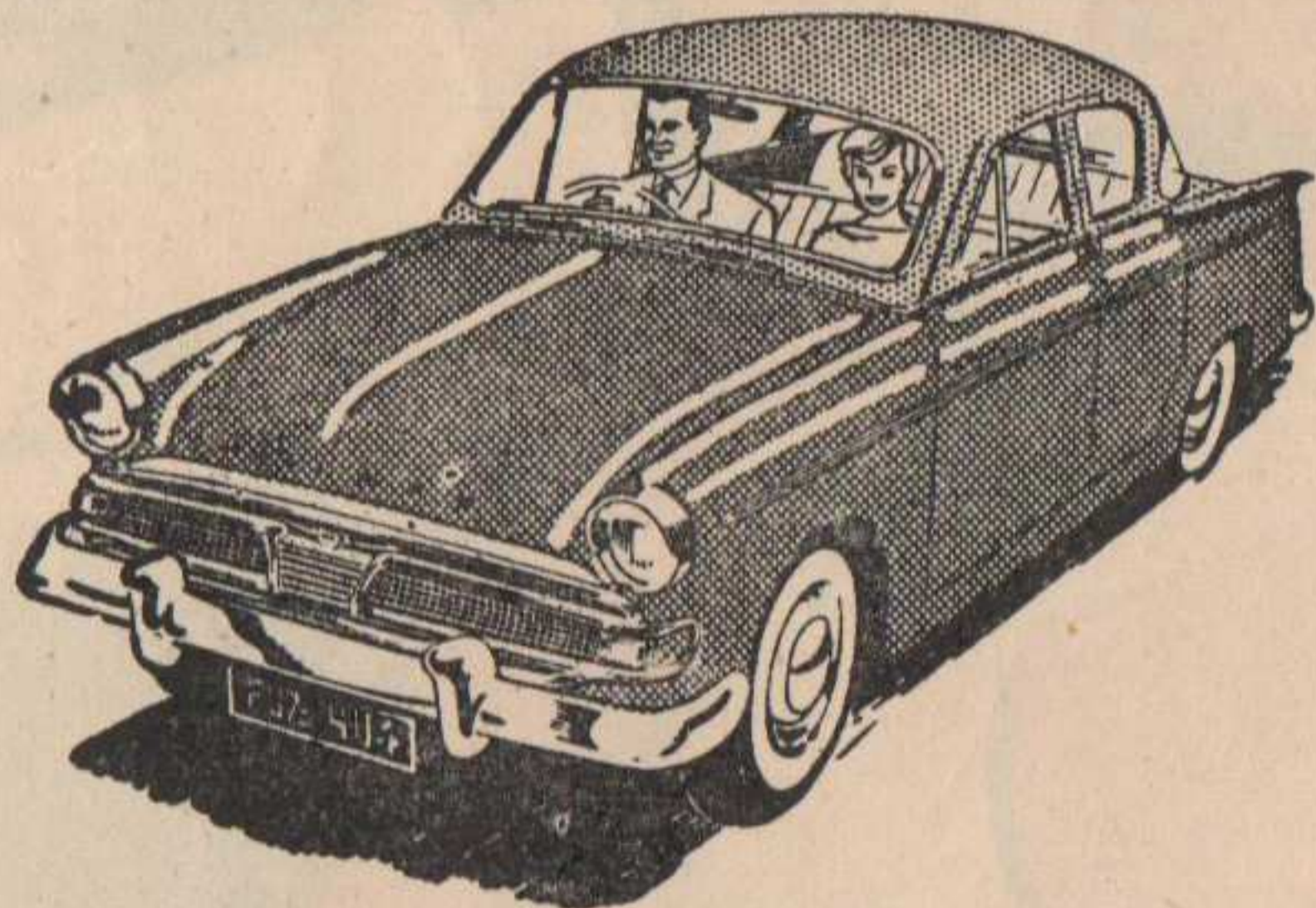
Sprite, Dovedale (at the Showground Garage, Costessey)

**COMMERCIALS**



Morris Commercial (at Norwich and Gorleston), Commer (Reepham), A.E.C. (Norwich),  
Standard and Land-Rover (Southwold)

**& CARS**



M.G., Morris, Wolseley, Riley (Norwich), Renault Citroen (Gorleston), Hillman  
(Reepham), Standard and Triumph (Southwold)

**BOSHIER OF NORWICH LTD**

CHAPEL FIELD ROAD GARAGES, NORWICH

Telephone: 24184 (3 lines)

Branches at:

REEPHAM Telephone: 295

SOUTHWOLD Telephone: 2125

GORLESTON Telephone: 23



# THE SCOTT - BROWN MEMORIAL TROPHY MEETING

AT THE SNETTERTON CIRCUIT

On Sunday, 23rd July, 1961

Organised by The Snetterton Motor Racing Club

PERMIT No. R.329

**Officials:**

**STEWARDS:**

For the R.A.C.

John Gott

For the S.M.R.C.

J. W. N. Bunbury

Brian Lister

S. J. Boshier

**SCRUTINEER:**

R. J. Soanes

**COMMENTATORS:**

D. V. Allen

W. Barlow

**CHIEF MARSHAL:**

P. Lacey

**CHIEF Paddock MARSHAL:**

C. Morton

**MEDICAL OFFICERS:**

Dr. Scott-Napier

Dr. R. Benson

Dr. Knowles

Dr. Liscombe

**MEDICAL SERVICES:**

British Red Cross Society

**MARSHALS:**

Members of the S.M.R.C.

**JUDGES:**

J. H. Sarginson

R. Rayner

J. Law

**CLERK OF THE COURSE:**

Cmdr. Heseltine

**SECRETARY OF THE MEETING:**

Oliver Sear

**TIMEKEEPERS:**

H. Shuttleworth

F. Lowe

A. Faulkner

**SERVICES**

BREAKDOWN SERVICES: R. C. Edmondson Ltd., Fakenham

Boshier of Norwich Ltd.

E. E. Smith & Sons Ltd., Attleborough

Browns Autos, Wisbech

COURSE CAR (Alvis): Boshier of Norwich Ltd.

AMPLIFICATION: By E.R.A. Co. Ltd., Norwich



# The Snetterton Motor Racing Club

LADIES AND GENTLEMEN,

Nearly everyone who is here to-day will remember the wonderful races we enjoyed so much a few years ago when Archie Scott-Brown used without fail to put up a brilliant performance, and on occasion his virtuoso driving was in a class with the great names of this sport. Alas, he is with us no more. The Snetterton Motor Racing Club are, nevertheless, proud to be able to present "The Scott-Brown Memorial Trophy" Race each year. Archie was a lover of large motor cars, and this year the Club has made the Trophy Race for Grand Touring Cars. I know all our friends who have entered Sprites and Turners and other small cars will forgive us if we extend a special welcome to the "E" type Jaguar and the Ferrari. This will be the first occasion on which the "E" type has been seen at Snetterton—and with its 3.8 litre engine it can truly be said to be a pretty hairy car—just the sort of stuff that Archie revelled in. And so as we see them being thrown through the corners with consummate skill by Roy Salvadori, Jack Sears, Gawaine Baillie and Dennis Taylor, let us reflect for a moment that this was just what Archie loved. The Club extends a special welcome to Mr. and Mrs. Scott-Brown who have come to present the Trophy to-day.

I would like to extend our special welcome to you all to-day, and we hope that you enjoy your afternoon's Motor Racing. We endeavour to give a wide variety of racing, and the entry is undoubtedly full of promise for an excellent afternoon's sport.

The next major Meeting in the Car series of Races is the National Open Event on Saturday, September 30th. The Programme will consist of a Touring Car (Saloon) Race; the Formula 1 Race for "THE MOLYSLIP TROPHY" in which it is confidently expected we will receive Works entries and famous drivers; and finally, our now traditional end-of-the-season Event—The Autosport "3 HOURS". Those of you who have visited Snetterton before for this Meeting will, I know, come again, for it is a Meeting quite different from anything else held in this Country, and the Club endeavours to capture some of the excitement of a miniature Le Mans—even rounding off the afternoon and evening racing with a Firework display! However, before the end of September there are two very excellent Motor Cycle Race Meetings, one next Sunday, 30th July and the other 3rd September. In addition to these, there are three Club Car Race Meetings on Sundays August 6th, 13th and 20th to which you are all welcome.

Yours sincerely,  
OLIVER SEARS, *Hon. Secretary.*

## Application Form for Membership

# The Snetterton Motor Racing Club

Name .....

Permanent Address .....

I enclose herewith.....to value of £.....to cover

First year's subscription.      Adult Member £1.      Family £1 10s

Cheques to be made payable to "SNETTERTON MOTOR RACING CLUB"

Application Form and Fees to be forwarded to:—

Snetterton Motor Racing Club, Old Buckenham Hall, Norwich

## PROGRAMME

START 2 p.m.

- EVENT 1. A 10-lap Scratch Race for cars entered in the 1961 Autosport Championship. Classes A and B.
- EVENT 2. A 10-lap Scratch Race for cars complying with the International Formula Junior.
- EVENT 3. A 10-lap Scratch Race for cars entered in the 1961 Autosport Championship. Classes C and D.
- EVENT 4. A 20-lap Scratch Race for Grand Touring Cars complying with Appendix J, Category B, Group 3, in three classes:—  
(a) up to 1000 c.c., (b) 1001 to 2000 c.c., and (c) over 2000 c.c.
- EVENT 5. A 12-lap Scratch Race for Touring Cars complying with Appendix J, Category A, Group 2, in two classes:—  
(a) up to 1000 c.c. and (b) over 1000 c.c.
- EVENT 6. A 15-lap Scratch Race—Formula Libre.

## AWARDS

- EVENT 1. In each class the following cash awards:—  
1st—£15    2nd—£10    3rd—£5.
- EVENT 2. To the winner "The John Law Trophy" (to be held for one year) and Replica. Also the following cash awards:—  
1st—£30    2nd—£20    3rd—£15    4th—£10    5th—£5.
- EVENT 3. In each class the following cash awards:—  
1st—£15    2nd—£10    3rd—£5.
- EVENT 4. To the outright winner "The Scott-Brown Memorial Trophy" (to be held for one year only), Replica and £75 cash. In addition the following class awards:—  
1st—£30    2nd—£20    3rd—£10. (The winner will forfeit his class award.)
- EVENT 5. To the outright winner a Trophy (to be held for one year) and Replica and the following cash awards in each class:—  
1st—£25    2nd—£15    3rd—£10.
- EVENT 6. 1st—£30    2nd—£20    3rd—£10    4th—£5.

## KEY TO COLOURS

A—Aluminium, Blk—Black, Blk/W—Black and White, Blk/R—Black and Red, B—Blue, B/R—Blue and Red, BRG—British Racing Green, C—Cream, C/B—Cream and Blue, G—Green, G/Gd—Green and Gold, G/R—Green and Red, G/S—Green and Silver, Gy—Grey, Gy/R—Grey and Red, LB—Light Blue, M—Maroon, M/R—Maroon and Red, MB—Midnight Blue, PB—Pale Blue, PA—Polished Alloy, R—Red, S—Silver, W—White, P/Gy—Pearl Grey, G/C—Green Check, B/S—Blue Silver, Gy/B—Grey Blue, Bg—Beige, Bg/R—Beige Red, Chl—Charcoal.

## SNETTERTON SPEED TABLE—I LAP=2.70 MILES

| m.s. | m.p.h. | m.s. | m.p.h. | m.s. | m.p.h. | m.s. | m.p.h. | m.s. | m.p.h. |
|------|--------|------|--------|------|--------|------|--------|------|--------|
| 1.30 | 108.40 | 1.45 | 92.91  | 2.00 | 81.30  | 2.15 | 72.27  | 2.30 | 65.04  |
| 1.31 | 107.21 | 1.46 | 92.04  | 2.01 | 80.63  | 2.16 | 71.74  | 2.31 | 64.61  |
| 1.32 | 106.04 | 1.47 | 91.18  | 2.02 | 79.97  | 2.17 | 71.21  | 2.32 | 64.18  |
| 1.33 | 104.90 | 1.48 | 90.33  | 2.03 | 79.32  | 2.18 | 70.70  | 2.33 | 63.76  |
| 1.34 | 103.79 | 1.49 | 89.51  | 2.04 | 78.68  | 2.19 | 70.19  | 2.34 | 63.35  |
| 1.35 | 102.69 | 1.50 | 88.69  | 2.05 | 78.05  | 2.20 | 69.69  | 2.35 | 62.94  |
| 1.36 | 101.63 | 1.51 | 87.89  | 2.06 | 77.43  | 2.21 | 69.19  | 2.36 | 62.54  |
| 1.37 | 100.58 | 1.52 | 87.11  | 2.07 | 76.82  | 2.22 | 68.70  | 2.37 | 62.14  |
| 1.38 | 99.55  | 1.53 | 86.34  | 2.08 | 76.22  | 2.23 | 68.22  | 2.38 | 61.75  |
| 1.39 | 98.55  | 1.54 | 85.58  | 2.09 | 75.63  | 2.24 | 67.75  | 2.39 | 61.36  |
| 1.40 | 97.56  | 1.55 | 84.83  | 2.10 | 75.05  | 2.25 | 67.28  | 2.40 | 60.98  |
| 1.41 | 96.59  | 1.56 | 84.10  | 2.11 | 74.47  | 2.26 | 66.82  |      |        |
| 1.42 | 95.65  | 1.57 | 83.38  | 2.12 | 73.91  | 2.27 | 66.37  |      |        |
| 1.43 | 94.72  | 1.58 | 82.68  | 2.13 | 73.35  | 2.28 | 65.92  |      |        |
| 1.44 | 93.81  | 1.59 | 81.98  | 2.14 | 72.81  | 2.29 | 65.48  |      |        |



# Motorcycles... Scooters... 3-wheelers...

NEW AND USED

You get the best from



on the best of easy terms

King's terms mean "Make-your-own-Terms"—terms which ensure that YOU are satisfied, that YOU get exactly what YOU want.

And you can get it right away for we can give immediate delivery of almost any make and model. Call in and see for yourself our marvellous selection.

**NO** GUARANTORS **NO** REFERENCES **NO** ENQUIRIES



SPROWSTON ROAD, NORWICH

AND AT

MILL ROAD, GREAT YARMOUTH

Open 9 a.m.—7 p.m. every day except Thursdays, open 9 a.m.—1 p.m.

## EVENT ONE

A 10-LAP SCRATCH RACE FOR CARS ENTERED IN THE 1961 AUTOSPORT CHAMPIONSHIP. Classes A and B

### CLASS A:

| No. | Colour | Entrant and Driver   | Car                       | c.c. |
|-----|--------|--|---------------------------|------|
| 4   | R      | J. Judt .. .. .  | D.B. Panhard HBR 5 ..     | 851  |
| 43  | W      | South Harpenden Motors (Dvr. M. M. Bell) .. .. .           | Fairthorpe Elec. Minor .. | 967  |
| 5   | G      | K. W. Mackenzie .. .. .                                    | Alex. Turner 950 G.T. ..  | 994  |
| 6   | Y      | Huddersfield Motor Racing Team (Dvr. E. J. B. Mitchell) .. | Marcos Saloon G.T. ..     | 997  |
| 7   | B      | Jack Gates .. .. .   | Marcos G.T. .. .. .       | 997  |
| 8   | S      | A. F. Coakley .. .. .                                      | Speedwell G.T. .. .. .    | 996  |
| 9   | B      | F. P. E. Dewe .. .. .                                      | Austin Healey Sprite ..   | 988  |
| 44  | R      | Miss Shelley Marten .. .. .                                | Turner Sports .. .. .     | 948  |
| 10  | B      | J. G. Sutton .. .. .                                       | Marcos G.T. .. .. .       | 997  |
| 45  | B      | Scuderia Light Blue (Dvr. A. P. Hedges) .. .. .            | Austin Healey Sprite ..   | 960  |
| 46  |        |  |                           |      |

### CLASS B:

|    |        |   |                     |      |
|----|--------|---|---------------------|------|
| 18 | B.R.G. | Team Turner (Dvr. J. P. Ferguson) .. .. .   | Turner 1100 .. .. . | 1098 |
| 19 | Blk/W  | The Chequered Flag (Dvr. G. Warner) .. .. . | Lotus Elite .. .. . | 1216 |
| 48 | G      | A. H. Knight (Dvr. K. G. Holland) ..        | Lotus XI .. .. .    | 1098 |
| 20 | R/B    | David Hobbs .. .. .                         | Lotus Elite .. .. . | 1216 |
| 21 | G      | Octagon Stable (Dvr. M. Reid) ..            | M.G.A. .. .. .      | 1588 |
| 49 |        |   |                     |      |

CLASS A 1st.....2nd.....3rd.....Winner's Speed.....Fastest Lap.....

CLASS B 1st.....2nd.....3rd.....Winner's Speed.....Fastest Lap.....

## FORTHCOMING EVENTS

### Motor Racing

SATURDAY, 30th SEPTEMBER

Molyslip Trophy, Vanwall Trophy & Autosport "3 Hours" Meeting For Formula 1 Cars

Sunday, 8th October, B.R.S.C.C. Meeting

Club Race Meetings — August 6th, 13th and 20th



## EVENT TWO

### A 10-LAP SCRATCH RACE FOR CARS COMPLYING WITH THE INTERNATIONAL FORMULA JUNIOR

| No. | Colour   | Entrant and Driver   | Car              | c.c. |
|-----|----------|--|------------------|------|
| 86  | LB       | Scuderia Light Blue (Dvr. H. P. K. Dibley)                     | Lola Mk. 3 F.J.  | 997  |
| 88  | B        | A. R. Wyllie   | Lotus Mk. 20     | 997  |
| 89  | B        | Equipe Arden (Dvr. Chris Summers)                              | Kieft F.J.       | 997  |
| 90  | G        | Gerard Racing (Dvr. J. H. Gaston)                              | Cooper F.J.      | 1098 |
| 91  | G        | J. D. Lewis  | Lola Junior      | 997  |
| 92  | Blk      | John Hine Cars Ltd. (Dvr. R. Bryant)                           | Lola Junior      | 948  |
| 94  | G        | Ecurie Chiltern (Dvr. M. E. S. Bond)                           | Lotus F.J.       | 997  |
| 95  | S        | G. G. Smith (Dvr. J. Muirhead/A. G. Smith)                     | Lola Junior      | 997  |
| 96  | Blk/W    | The Chequered Flag (Dvr. Bill Moss)                            | Gemini Mk. 3A    | 997  |
| 97  | Blk/W    | The Chequered Flag (Dvr. M. Parkes)                            | Gemini Mk. 3A    | 997  |
| 99  | G        | G. A. Henrotte (Dvr. J. Brown/B. Whitehouse)                   | Lotus 18         | 997  |
| 100 | R        | G. A. Henrotte (Dvr. J. Brown/B. Whitehouse)                   | Lotus 20         | 1098 |
| 104 | G        | R. Harris (Dvr. J. Gee-Turner)                                 | Lotus 20         | 997  |
| 105 | W        | K. Lyon  | Lotus 20         | 997  |
| 106 | W/B      | J. Sieff (Dvr. R. Costey)<br>Jim Russell Racing Drivers School | Cooper F.J.      | 994  |
| 107 | G        | (Dvr. F. Gardner)  | Lotus 20 F.J.    | 997  |
| 108 | G        | (Dvr. F. Jacks)  | Lotus 18 F.J.    | 997  |
| 110 | Y        | (Dvr. F. Clarke)   | Lotus 18 F.J.    | 997  |
| 111 | G        | (Dvr. J. Bradshaw)   | Lotus 18 F.J.    | 997  |
| 114 | G        | (Dvr. N. Lederle)  | Lotus 20 F.J.    | 997  |
| 115 | B        | (Dvr. E. April)  | Lotus 18 F.J.    | 997  |
| 118 | R        | Superspeed Conversions Ltd. (Dvr. J. Young)                    | Lotus 20         | 997  |
| 120 | B.R.G./S | D. M. Bertram  | Senior Junior    | 997  |
| 121 | R        | C. J. D. Berridge  | Terrier Mk. IV 6 | 997  |
| 122 | W/G      | A. Brown (Dvr. M. H. Spence)                                   | Emeryson/Ford J. | 997  |
| 124 |          | Lola Equipe (Dvr. D. Prior)                                    | Lola F.J.        | 997  |
| 125 |          | Lola Equipe (Dvr. J. Hine)                                     | Lola F.J.        | 1100 |
| 126 | B        | B. Pinckney  | Lotus 20         | 998  |
| 130 |          |  |                  |      |

#### RESERVES

|     |        |   |               |     |
|-----|--------|---|---------------|-----|
| 87  | Y      | B.A.B.S. Racing Team (Dvr. D. Austin)           | Elva F.J.     | 997 |
| 93  | W/G    | Emeryson Cars Ltd. (Dvr. M. Spence)             | Emeryson F.J. | 998 |
| 98  | B      | David M. D. Prophet                             | Kieft F.J.    | 994 |
| 101 | B      | M. J. Williams                                  | Gemini Mk. 3A | 997 |
| 102 | G      | D. J. Rickman                                   | Lotus 18      | 997 |
| 103 | R      | J. Fenning<br>Jim Russell Racing Drivers School | Lotus F.J.    | 998 |
| 109 | G      | (Dvr. K. Lall)                                  | Lotus 18 F.J. | 997 |
| 112 | G      | (Dvr. H. Morrogh)                               | Lotus 18 F.J. | 997 |
| 113 | G      | (Dvr. B. Glynn)                                 | Lotus 18 F.J. | 997 |
| 116 | B.R.G. | J. M. Edwards                                   | Cooper Junior | 997 |

Continued on next page

## EVENT THREE

### A 10-LAP SCRATCH RACE FOR CARS ENTERED IN THE 1961 AUTOSPORT CHAMPIONSHIP. Classes C and D

#### CLASS C:

| No. | Colour | Entrant and Driver                                    | Car                   | c.c. |
|-----|--------|---|-----------------------|------|
| 22  | Y      | Warwick Cars (Dvr. S. Hill/R. Hain)                   | Warwick G.T.          | 1991 |
| 33  | G      | Ecurie Chiltern (Dvr. D. G. Dixon)                    | Austin Healey 3000    | 2912 |
| 23  | G/Gld  | J. R. Olthoff   | M.G.A. Twin Cam       | 1588 |
| 52  | B      | Central Motors (Sheffield) (Dvr. J. B. Rodgers)       | A.C. Ace              | 1971 |
| 24  | S      | W. J. Shaw  | Ace G.T.              | 1971 |
| 53  | B      | R. A. V. Staples                                      | A.C. Ace              | 1971 |
| 25  | C      | Peter Marten  | Morgan Plus 4         | 1991 |
| 26  | G      | R. J. Crosfield                                       | M.G. Twin Cam         | 1588 |
| 27  | R      | Huddersfield Motor Racing Team (Dvr. Tony Lanfranchi) | Elva Courier          | 1588 |
| 28  | B      | J. Woolfe   | T.V.R. Grantura       | 1588 |
| 11  | G      | J. H. Gaston  | Austin Healey Special | 994  |
| 54  | B      | J. R. Stoop   | Porsche Carrera       | 1588 |
| 55  | Blk    | H. R. Braithwaite                                     | Morgan Plus 4         | 1991 |
| 56  |        |   |                       |      |

#### CLASS D:

|    |        |   |                    |         |
|----|--------|---|--------------------|---------|
| 57 | R      | S.A.H. Accessories (Dvr. N. H. Dangerfield) | Triumph TR3        | 2136    |
| 34 | Y      | Warwick Cars (Dvr. R. Hain/S. Hill)         | Warwick 3500 G.T.  | 3500    |
| 35 | B/W    | Elizabeth Jones                             | Austin Healey 3000 | 2912    |
| 58 | B      | M. Salmon                                   | Jaguar "D" Type    | 3.8 lt. |
| 59 | R      | Octagon Stable (Dvr. R. Ide)                | M.G. M.G.A. 1600   | 1588    |
| 36 | B.R.G. | Tanum Equipe (Dvr. K. T. Wilson)            | Jaguar XK120       | 3442    |
| 37 | R/Blk  | Octagon Stable (Dvr. R. E. Snow)            | Austin Healey 3000 | 2912    |
| 60 | G      | Major I. B. Baillie                         | Aston Martin DBR1  | 2992    |
| 61 |        |   |                    |         |

CLASS C 1st.....2nd.....3rd.....Winner's Speed.....Fastest Lap.....

CLASS D 1st.....2nd.....3rd.....Winner's Speed.....Fastest Lap.....

#### Reserves for Event Two-continued

|     |        |  |                 |     |
|-----|--------|--|-----------------|-----|
| 117 | R/W    | J. M. Bramall                                | Lotus Junior 18 | 997 |
| 119 | A      | E. Harris                                    | Lotus 18        | 948 |
| 123 | B.R.G. | R. B. Brown (Racing) Ltd. (Dvr. R. B. Brown) | Lotus 20        | 997 |
| 127 | B      | Midland Racing Partnership (Dvr. W. Bradley) | Cooper F.J.     | 994 |
| 128 | B      | Midland Racing Partnership (Dvr. R. Attwood) | Cooper F.J.     | 994 |
| 129 | Blk    | R. J. Wild (Dvr. B. Cole)                    | Gemini F.J.     | 998 |

1st..... 2nd..... 3rd..... Winner's Speed..... Fastest Lap.....

Winner's Speed: Mins.....Secs..... Fastest Lap: Mins.....Secs.....



## EVENT FOUR

**A 20-LAP SCRATCH RACE FOR GRAND TOURING CARS COMPLYING WITH APPENDIX J, CATEGORY B, GROUP 3, in three classes:**  
(a) up to 1000 c.c., (b) 1001 to 2000 c.c., and (c) over 2000 c.c.

### CLASS A:

| No. | Colour | Entrant and Driver              | Car                  | c.c. |
|-----|--------|---------------------------------|----------------------|------|
| 2   | B      | Speedex Ltd. (Dvr. J. E. Marsh) | Marcos G.T.          | 996  |
| 3   | G/Blk  | K. A. Price.. .. .              | Turner Alexander     | 994  |
| 4   | R      | J. Judt .. .. .                 | D.B. Panhard HBR5    | 851  |
| 5   | G      | K. W. Mackenzie .. .. .         | Alex-Turner 950 G.T. | 994  |
| 7   | B      | J. Gates .. .. .                | Marcos G.T.          | 997  |
| 8   | S      | A. F. Coakley .. .. .           | Speedwell G.T.       | 996  |
| 10  | B      | J. G. Sutton .. .. .            | Marcos G.T.          | 997  |
| 11  | G      | J. H. Gaston .. .. .            | Austin Healey Sprite | 994  |

### RESERVES

|   |     |  |                      |     |
|---|-----|--|----------------------|-----|
| 1 | B/W | D. J. Cole .. .. .   | Austin Healey Sprite | 948 |
| 6 | Y   | Huddersfield Motor Racing Team<br>(Dvr. E. J. B. Mitchell) .. .. . | Marcos Saloon G.T.   | 997 |
| 9 | B   | F. P. E. Dewe .. .. .  | Austin Healey Sprite | 988 |

### CLASS B:

|    |        |   |                 |      |
|----|--------|---|-----------------|------|
| 14 | W      | T. J. Threlfall .. .. .   | Lotus Elite     | 1216 |
| 15 | S      | R. S. Benson .. .. .  | Porsche Carrera | 1498 |
| 16 | R      | Morgan Motor Co. (Dvr. R. A. V.<br>Staples or C. J. Lawrence) .. .. . | Morgan Plus 4   | 1991 |
| 17 | B      | Morgan Motor Co. (Dvr. R. Shep-<br>perd-Baron) .. .. .                | Morgan Plus 4   | 1991 |
| 18 | B.R.G. | Team Turner (Dvr. J. P. Fergus-<br>son) .. .. .                       | Turner 1100     | 1098 |
| 19 | Blk/W  | Chequered Flag Ltd. (Dvr. G.<br>Warner) .. .. .                       | Lotus Elite     | 1216 |
| 20 | R/B    | David Hobbs .. .. .   | Lotus Elite     | 1216 |
| 24 | S      | W. J. Shaw .. .. .  | Ace G.T.        | 1971 |
| 29 | W      | Gilby Engineering (Dvr. K. A.<br>Greene) .. .. .                      | Porsche Carrera | 1588 |
| 54 | B      | J. R. Stoop .. .. .   | Porsche Carrera | 1588 |

### RESERVES

|    |       |  |                 |      |
|----|-------|--|-----------------|------|
| 21 | G     | Octagon Stable (Dvr. M. Reid) .. .. .                          | M.G.A.          | 1588 |
| 22 | Y     | Warwick Cars (Dvr. S. Hill or R.<br>Hain) .. .. .              | Warwick G.T.    | 1991 |
| 23 | G/Gld | J. R. Olthoff .. .. .  | M.G.A. Twin Cam | 1588 |
| 25 | C     | Peter Marten .. .. .   | Morgan Plus 4   | 1991 |
| 26 | G     | R. J. Crosfield .. .. .  | M.G.            | 1588 |
| 27 | R     | Huddersfield Motor Racing Team<br>(Dvr. T. Lanfranchi) .. .. . | Elva Courier    | 1588 |
| 28 | B     | John Woolfe .. .. .  | T.V.R. Grantura | 1588 |

### CLASS C:

|    |    |  |                    |      |
|----|----|--|--------------------|------|
| 30 | Gy | John Coombs (Dvr. R. Salvadori)                        | Jaguar "E" Type    | 3781 |
| 31 | G  | Peter Berry (Racing) Ltd. (Dvr. D.<br>Taylor) .. .. .  | Jaguar "E" Type    | 3781 |
| 32 | C  | George Wicken .. .. .                                  | Jaguar "E" Type    | 3781 |
| 33 | G  | Ecurie Chiltern (Dvr. D. G. Dixon/<br>M. Bond) .. .. . | Austin Healey 3000 | 2912 |
| 34 | Y  | Warwick Cars (Dvr. R. Hain/S.<br>Hill) .. .. .         | Warwick 3500 G.T.  | 3500 |

|    |        |                                   |                    |      |
|----|--------|-----------------------------------|--------------------|------|
| 35 | B/W    | Elizabeth Jones .. .. .           | Austin Healey 3000 | 2912 |
| 36 | B.R.G. | Tanum Equipe (Dvr. K. T. Wilson)  | Jaguar XK120       | 3442 |
| 38 | B      | Equipe Endeavour (Dvr. J. Sears)  | Jaguar "E" Type    | 3781 |
| 39 | B      | Equipe Endeavour (Dvr. M. Parkes) | Ferrari            | 2990 |
| 41 |        | To be nominated .. .. .           | Ferrari            | 2990 |
| 42 | B      | Sir Gawaine Baillie .. .. .       | Jaguar 'E' Type    | 3781 |

### RESERVE

|    |       |                                  |                    |      |
|----|-------|----------------------------------|--------------------|------|
| 37 | R/Blk | Octagon Stable (Dvr. R. E. Snow) | Austin Healey 3000 | 2912 |
|----|-------|----------------------------------|--------------------|------|

**CLASS A** 1st.....2nd.....3rd.....Winner's Speed.....Fastest Lap.....

**CLASS B** 1st.....2nd.....3rd.....Winner's Speed.....Fastest Lap.....

**CLASS C** 1st.....2nd.....3rd.....Winner's Speed.....Fastest Lap.....

## LAP SCORING CHART

|   | 1  | 2  | 3  | 4  | 5  | 6  | 7  | 8  | 9  | 10 |
|---|----|----|----|----|----|----|----|----|----|----|
| 1 |    |    |    |    |    |    |    |    |    |    |
| 2 |    |    |    |    |    |    |    |    |    |    |
| 3 |    |    |    |    |    |    |    |    |    |    |
| 4 |    |    |    |    |    |    |    |    |    |    |
| 5 |    |    |    |    |    |    |    |    |    |    |
| 6 |    |    |    |    |    |    |    |    |    |    |
| 7 |    |    |    |    |    |    |    |    |    |    |
| 8 |    |    |    |    |    |    |    |    |    |    |
|   |    |    |    |    |    |    |    |    |    |    |
|   | 11 | 12 | 13 | 14 | 15 | 16 | 17 | 18 | 19 | 20 |
| 1 |    |    |    |    |    |    |    |    |    |    |
| 2 |    |    |    |    |    |    |    |    |    |    |
| 3 |    |    |    |    |    |    |    |    |    |    |
| 4 |    |    |    |    |    |    |    |    |    |    |
| 5 |    |    |    |    |    |    |    |    |    |    |
| 6 |    |    |    |    |    |    |    |    |    |    |
| 7 |    |    |    |    |    |    |    |    |    |    |
| 8 |    |    |    |    |    |    |    |    |    |    |

# National Motor Cycle Race Meetings

**Sundays 30th July and 3rd September**



## EVENT FIVE

A 12-LAP SCRATCH RACE FOR TOURING CARS COMPLYING WITH  
APPENDIX J, CATEGORY A, GROUP 2, in two classes:  
(a) up to 1000 c.c., and (b) over 1000 c.c.

### CLASS A:

| No. | Colour | Entrant and Driver                          | Car                       | c.c. |
|-----|--------|---|---------------------------|------|
| 64  | R      | R. J. Davy .. .. .                          | Ford Anglia .. .. .       | 975  |
| 65  | R      | J. J. Williams .. .. .                      | Austin Seven .. .. .      | 848  |
| 66  | R      | Christabel Carlisle .. .. .                 | Austin Seven .. .. .      | 848  |
| 68  | Gy     | A. C. Todd .. .. .                          | Austin Seven Mini .. .. . | 848  |
| 69  | Gy     | G. C. Shepherd .. .. .                      | B.M.W. Sports .. .. .     | 700  |
| 70  | R      | M. H. Clare .. .. .                         | Morris Mini Minor .. .. . | 878  |
| 71  | W      | Jim Russell R.D.S. (Dvr. Ken Lall)          | Morris Mini Minor .. .. . | 848  |
| 72  | W      | S.A.H. Accessories (Dvr. N. H. Dangerfield) | Saab .. .. .              | 850  |
| 73  | B      | A. D. Rutt .. .. .                          | Morris Mini Minor .. .. . | 848  |
| 74  |        |   |                           |      |

### CLASS B:

|    |    |   |                             |      |
|----|----|---|-----------------------------|------|
| 78 | Gy | John Coombs (Dvr. R. Salvadori)               | Jaguar Saloon Mk. 2 .. .. . | 3781 |
| 79 | G  | Peter Berry (Racing) Ltd. (Dvr. D. Taylor)    | Jaguar Saloon .. .. .       | 3781 |
| 80 | G  | Peter Berry (Racing) Ltd. (Dvr. W. A. Powell) | Jaguar Saloon .. .. .       | 3781 |
| 81 | B  | Equipe Endeavour (Dvr. J. Sears)              | Jaguar 3.8 .. .. .          | 3.8  |
| 82 | B  | Equipe Endeavour (Dvr. M. Parkes)             | Jaguar .. .. .              | 3.8  |
| 83 | B  | Sir Gawaine Bailie .. .. .                    | Jaguar .. .. .              | 3.8  |
| 84 |    |   |                             |      |
| 85 |    |   |                             |      |

CLASS A 1st.....2nd.....3rd.....Winner's Speed.....Fastest Lap.....

CLASS B 1st.....2nd.....3rd.....Winner's Speed.....Fastest Lap.....

**AFTER THE MEETING NO TRAFFIC IS PERMITTED ON THE  
CIRCUIT WITHOUT SPECIFIC PERMISSION OF THE CLERK-  
OF-THE-COURSE OR TRACK MANAGER**

**ALL TRAFFIC SHOULD TRAVEL IN A CLOCKWISE DIRECTION**

## EVENT SIX

A 15-LAP SCRATCH RACE—FORMULA LIBRE

| No. | Colour | Entrant and Driver                           | Car                           | c.c.    |
|-----|--------|--|-------------------------------|---------|
| 48  | G      | A. H. Knight (Dvr. K. G. Holland)            | Lotus XI .. .. .              | 1098    |
| 87  | Y      | B.A.B.S. Racing Team (Dvr. D. Austin)        | Elva F.J. .. .. .             | 997     |
| 88  | B      | A. R. Wyllie .. .. .                         | Lotus Mk. 20 .. .. .          | 997     |
| 90  | G      | Gerard Racing (Dvr. J. H. Gaston)            | Cooper F.J. .. .. .           | 1098    |
| 91  | G      | J. D. Lewis .. .. .                          | Lola Junior .. .. .           | 997     |
| 95  | S      | G. G. Smith (Dvr. J. Muirhead/G. G. Smith)   | Lola Junior .. .. .           | 997     |
| 96  | Blk/W  | The Chequered Flag (Dvr. B. Moss)            | Gemini Mk. 3A .. .. .         | 997     |
| 97  | Blk/W  | The Chequered Flag (Dvr. M. Parkes)          | Gemini Mk. 3A .. .. .         | 997     |
| 98  | B      | D. M. D. Prophet .. .. .                     | Kieft F.J. ... .. .           | 994     |
| 102 | G      | D. J. Rickman .. .. .                        | Lotus 18 .. .. .              | 997     |
| 103 | R      | J. Fenning .. .. .                           | Lotus F.J. .. .. .            | 998     |
| 117 | R/W    | J. M. Bramall .. .. .                        | Lotus Junior 18 .. .. .       | 997     |
| 119 | A      | E. Harris .. .. .                            | Lotus 18 .. .. .              | 948     |
| 120 | BRG/S  | D. M. Bertram .. .. .                        | Senior Junior .. .. .         | 997     |
| 60  | G      | Major I. B. Baillie .. .. .                  | Aston Martin DBR1 .. .. .     | 2992    |
| 131 | G      | Gilby Eng. Co. Ltd. (Dvr. K. A. Greene)      | Gilby Climax F.1 .. .. .      | 1495    |
| 132 | G      | Graham Eden .. .. .                          | Cooper or Lotus .. .. .       | 1475    |
| 133 | G      | John O. Coundley .. .. .                     | Lister Jaguar Special .. .. . | 3781    |
| 134 | G      | Ansty Garage (Dvr. Chris Summers)            | Cooper F.I. .. .. .           | 1497    |
| 135 | G      | C. Ashmore .. .. .                           | Cooper Climax F.I. .. .. .    | 1500    |
| 136 | R      | Jim Russell R.D.S. (Dvr. D. Resa)            | Cooper Sports Racing .. .. .  | 1097    |
| 137 | G      | Gerard Racing (Dvr. B. Gerard)               | Cooper 1961 Mk. II .. .. .    | 1340    |
| 138 | G      | D. R. Taylor .. .. .                         | Lotus F.2 .. .. .             | 1470    |
| 139 | S      | J. J. Wilks .. .. .                          | Omega 2 Str. .. .. .          | 3482    |
| 140 | B      | R. F. Pierpoint .. .. .                      | Lotus 15 .. .. .              | 2 litre |
| 127 | B      | Midland Racing Partnership (Dvr. W. Bradley) | Cooper F.J. .. .. .           | 994     |
| 128 | B      | Midland Racing Partnership (Dvr. R. Attwood) | Cooper F.J. .. .. .           | 994     |
| 129 | Blk    | R. J. Wild (Dvr. B. Cole)                    | Gemini F.J. .. .. .           | 998     |
| 58  | B      | M. Salmon .. .. .                            | Jaguar "D" Type .. .. .       | 3.8     |
| 141 | B      | Warwick Banks .. .. .                        | Lotus XI .. .. .              | 1098    |

1st..... 2nd..... 3rd..... Winner's Speed..... Fastest Lap.....

Winner's Speed : Mins.....Secs..... Fastest Lap : Mins.....Secs.....

**Why not join the Snetterton  
Motor Racing Club?**

**A CLUB FOR RACING PEOPLE—RUN BY RACING PEOPLE!**

**Application Form on page 2**



### FLAG SIGNALS

- RED**—Signal for complete and immediate stop.
- YELLOW** (waved)—Great danger, be prepared to stop.
- YELLOW** (motionless)—Take care, danger.
- BLUE** (waved)—Another competitor is trying to overtake you.
- BLUE** (motionless)—Another competitor is following you very closely.
- YELLOW** with vertical **RED STRIPES**—Take care, oil has been spilt somewhere on the road.
- WHITE**—An ambulance or service car is on the circuit.
- BLACK** shown with number—Signal for car bearing that number to stop at pits on next lap.
- BLACK** with **WHITE CHEQUERED**—Signal for end of race.

# THIS IS AUTOBRITE WEATHER!

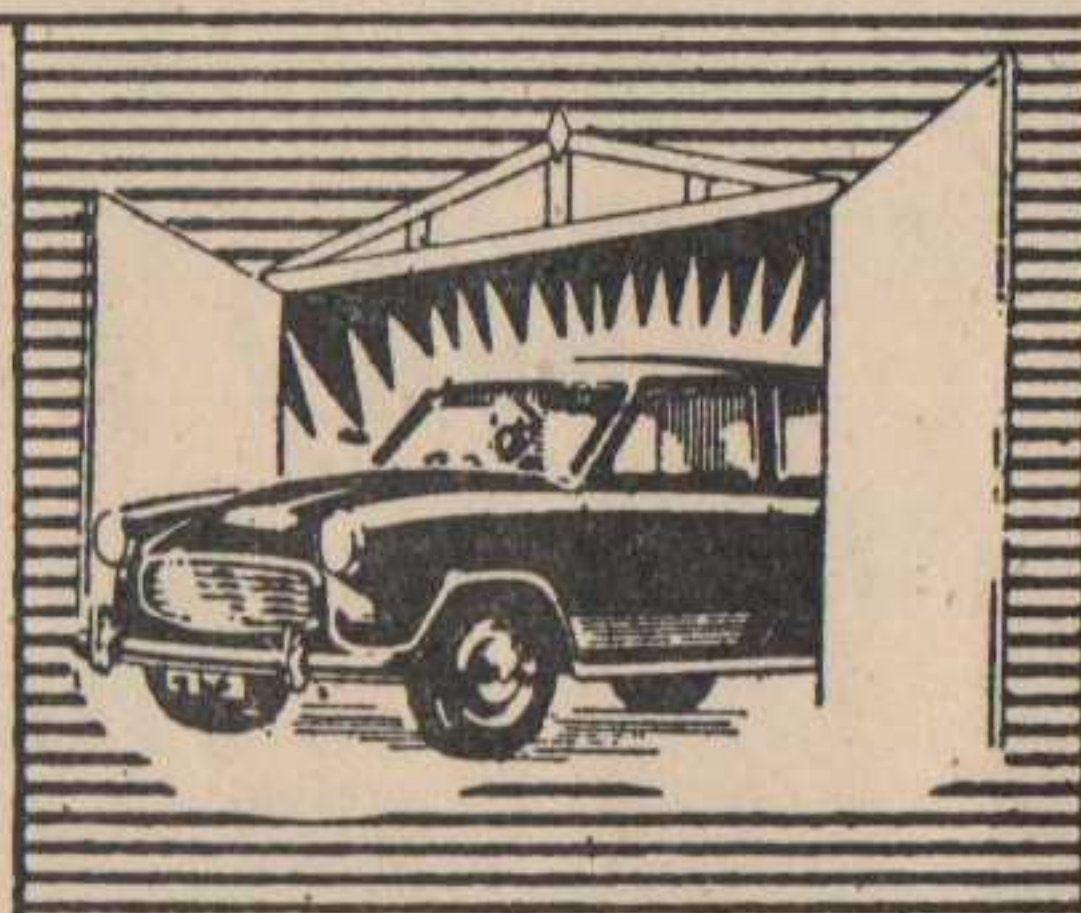
**DUST....GRIT....** Dust and Grit act like sand-paper on your cellulose, lays on roads waiting to hit into your coachwork and chromium at killing velocity. Just imagine motoring at 45 m.p.h. into a headwind of 25 m.p.h. Your car suffers a 70 m.p.h. bombardment every yard you drive!!!

Shine and protect your car in one easy operation with Autobrite Silicone Car Polish—Laugh at the worst the weather can do, and keep your car **FREE FROM RUST & OXIDATION.**



**5/-**  
ENOUGH FOR  
**3 CARS!**

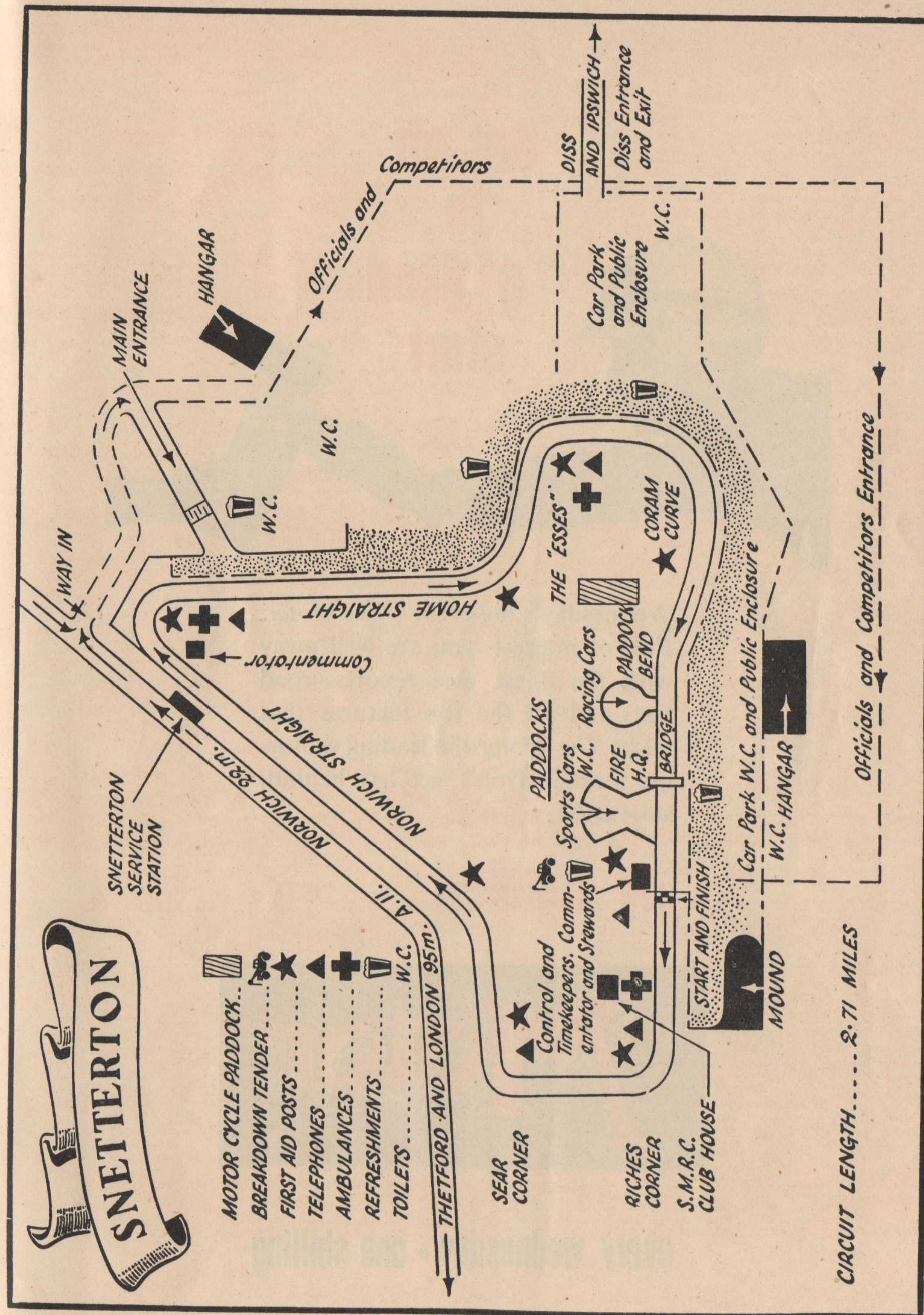
START OFF WITH  
WHOLE-CAR  
**SILICONE**  
SHINE AND  
PROTECTION



## THE SILICONE CAR POLISH

**GUARANTEE**—Better than any Polish you have ever used—or your Money back IN FULL.

E. R. HOWARD LTD., IPSWICH





**Get off  
to  
a good  
start**



Wednesday's big event – *The Motor*. Full of interest—you are well away with the finest race reports, road tests and all the top features that make *The Motor* the leading motor-ing journal. Don't get left behind, start right,

**by reading . .**

**The Motor**

**every wednesday \* one shilling**