

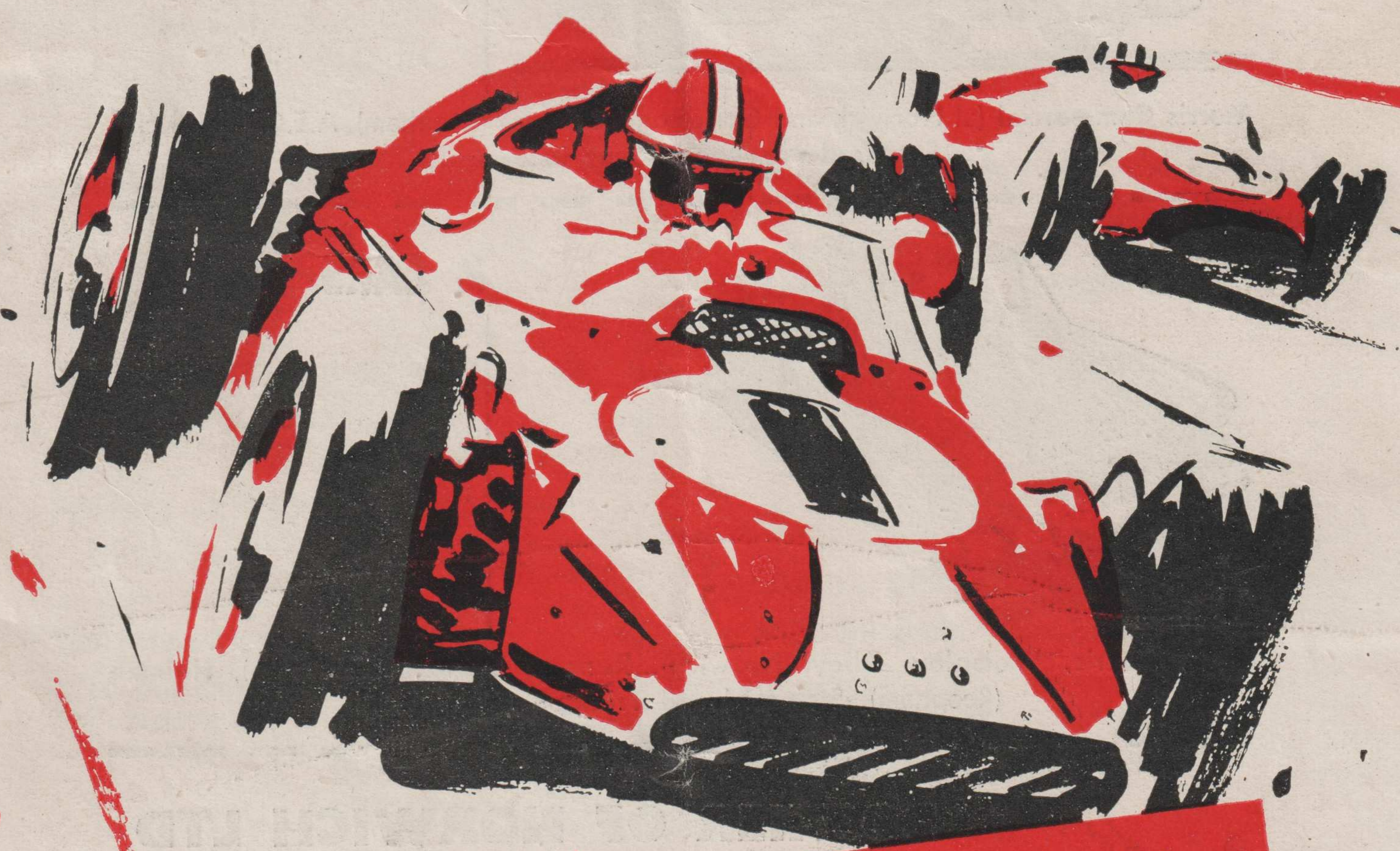
SNETTERTON MOTOR RACING CIRCUIT

THE CLUB RACE MEETING

Sunday, 9th April, 1961

OFFICIAL PROGRAMME 2/6

ORGANISED BY THE SNETTERTON MOTOR RACING CLUB



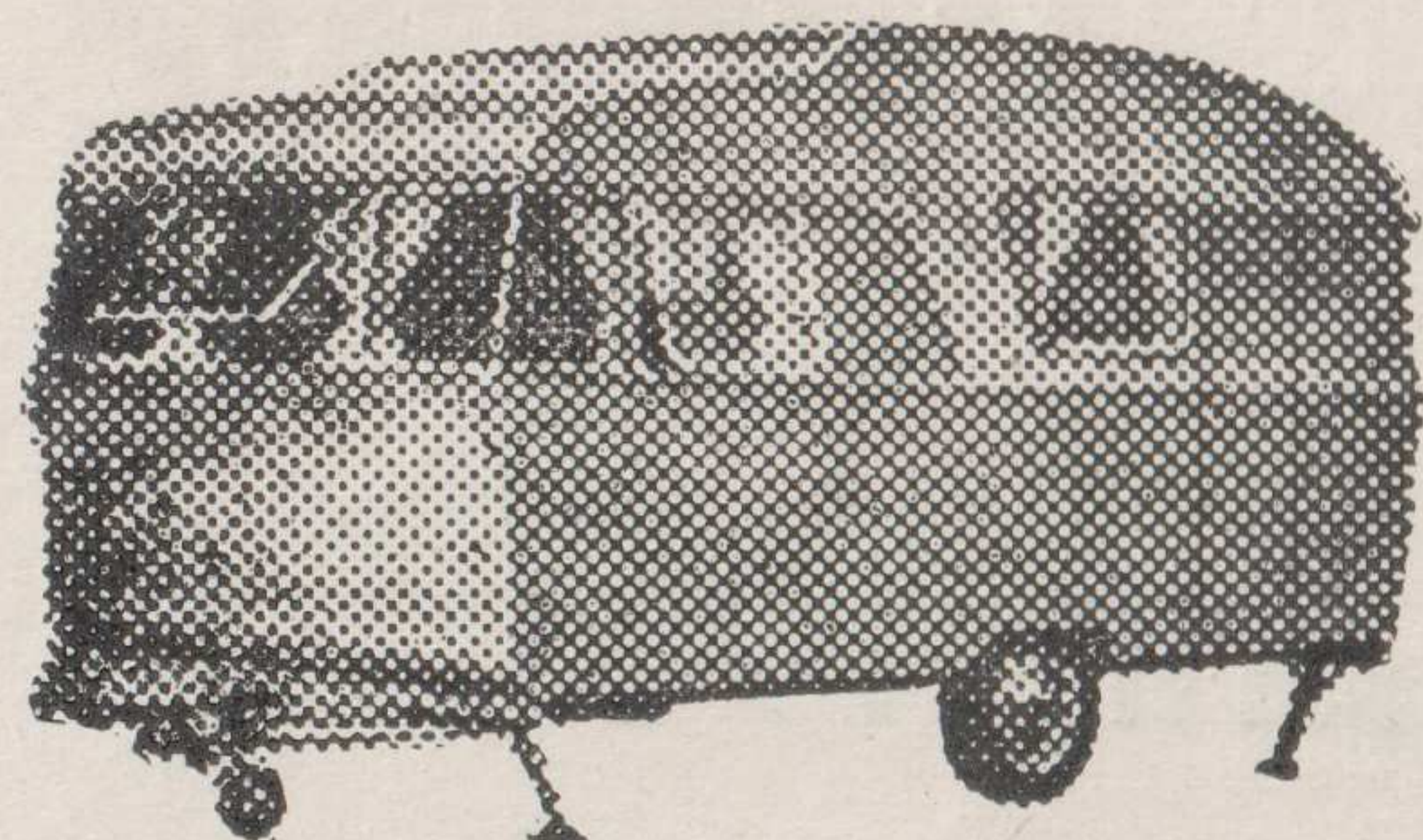
Fridays 1s.

The **Autocar**

the unchallenged leader

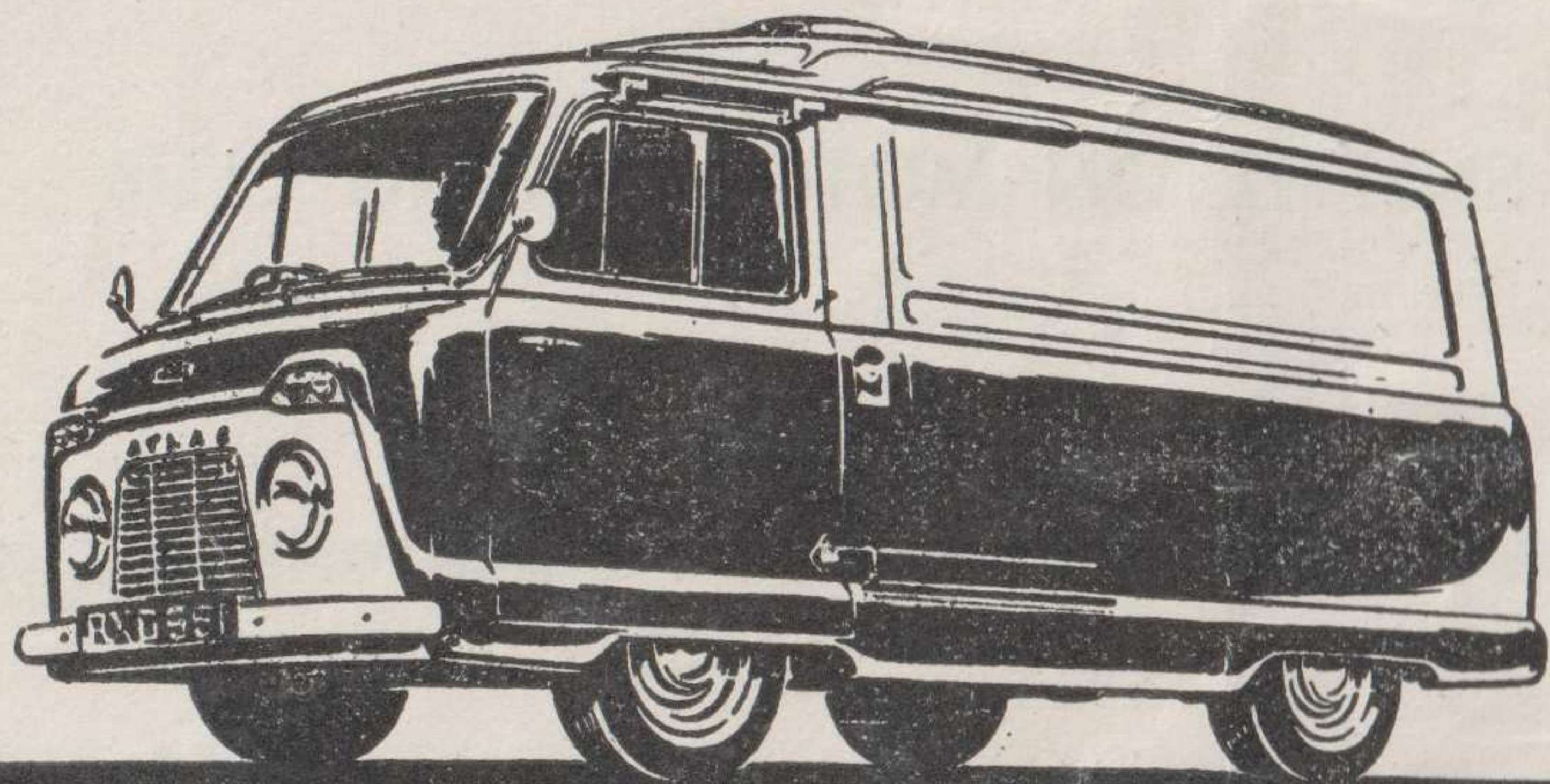


for
CARAVANS



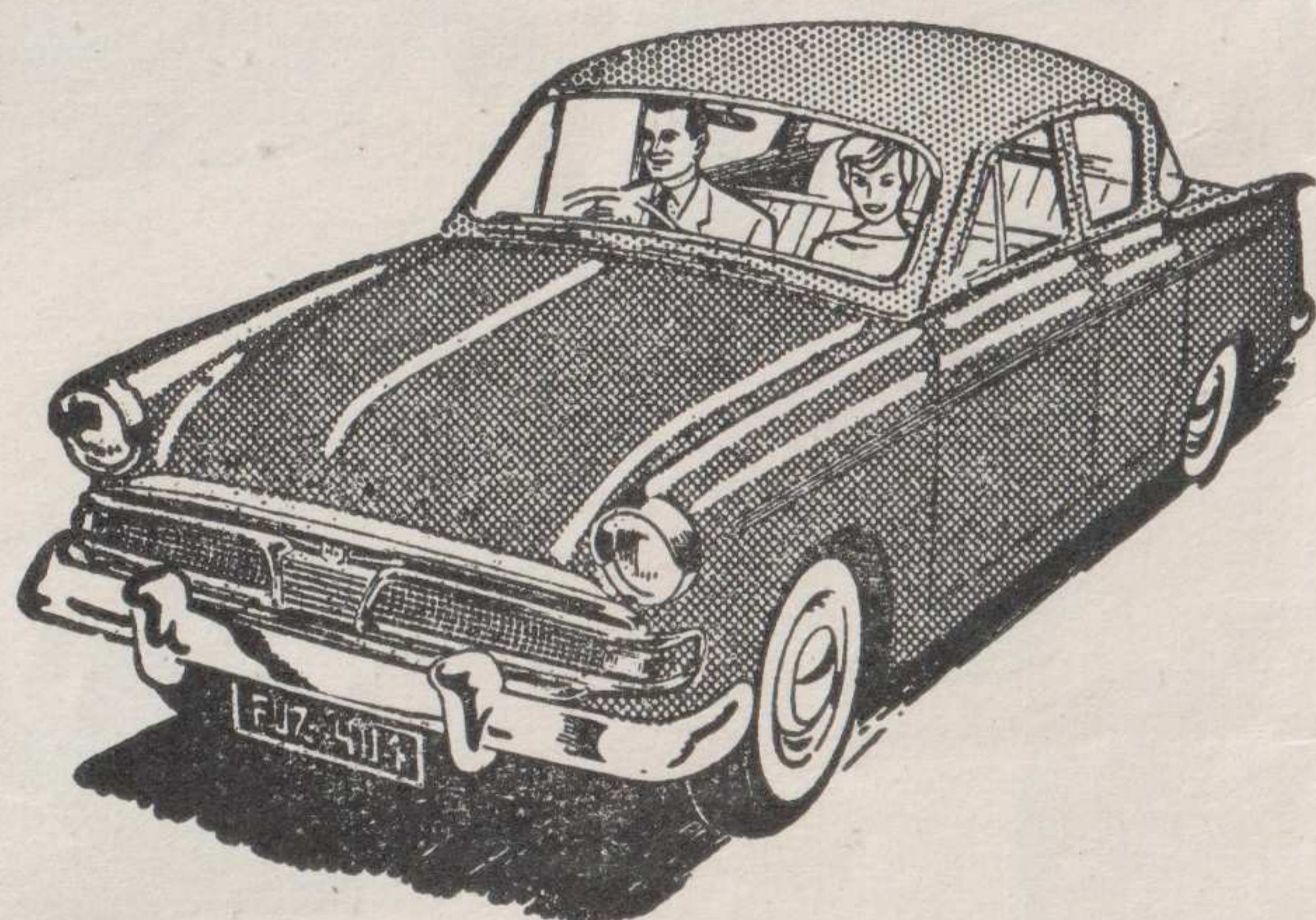
Sprite, Dovedale (at the Showground Garage, Costessey)

COMMERCIALS



Morris Commercial (at Norwich and Gorleston), Commer (Reepham), A.E.C. (Norwich), Standard and Land-Rover (Southwold)

& CARS



M.G., Morris, Wolseley, Riley (Norwich), Renault Citroen (Gorleston), Hillman (Reepham), Standard and Triumph (Southwold)

BOSHIER OF NORWICH LTD

CHAPEL FIELD ROAD GARAGES, NORWICH

Telephone: 24184 (3 lines)

Branches at:

REEPHAM Telephone: 295

SOUTHWOLD Telephone: 2125

GORLESTON Telephone: 23



THE CLUB RACE MEETING

AT THE SNETTERTON CIRCUIT

On Sunday, 9th April, 1961

Organised by The Snetterton Motor Racing Club

PERMIT NO. R.943

Officials:

STEWARDS:

For the R.A.C.
R. Playford

For the S.M.R.C.
Capt. J. W. N. Bunbury
Brian Lister

SCRUTINEER:

R. J. Soanes

COMMENTATORS:

D. V. Allen
W. Barlow

JUDGES:

J. H. Sarginson
Major J. Law
S. J. Boshier

CHIEF MARSHAL:

P. Lacey

CHIEF PADDOCK MARSHAL:

C. Morton

CLERK OF THE COURSE:

Cmdr. Heseltine

MEDICAL OFFICERS:

Dr. J. Stuart
Dr. R. Benson
Dr. Buchan

SECRETARY OF THE MEETING:

Oliver Sear

MEDICAL SERVICES:

St. John Ambulance Brigade

TIMEKEEPERS:

H. Shuttleworth
F. Lowe
C. Toplis

MARSHALS:

Members of the S.M.R.C.

SERVICES

BREAKDOWN SERVICES: R. C. Edmondson Ltd., Fakenham
Boshier of Norwich Ltd.
E. E. Smith & Sons Ltd., Attleborough
Browns Autos, Wisbech

COURSE CAR (Alvis): Boshier of Norwich Ltd.

AMPLIFICATION: By E.R.A. Co. Ltd., Norwich

The Snetterton Motor Racing Club

LADIES AND GENTLEMEN,

The Club Event is often referred to as the cradle of the sport of motor racing—some cradle! The hairy machinery, and the skill of the drivers rather confounds this popular misconception; nevertheless, it is fair to say that the Grand Prix drivers of to-day have on the whole reached championship class thanks largely to the lessons learnt at events similar to the one the S.M.R.C. is running for its members to-day. This is not a large meeting, nor do we expect to see star names among the entry lists; all the same, we feel sure that you will enjoy some fine racing. This programme is being “put to bed” as the printers say, before we have closed the entries, this is due to the Easter holidays last week-end, so I hope that, although the lists look rather sparse they will have grown a bit by the time the starters’ flag drops.

This Club Meeting is great fun for us—I hope it will be for you. Our next meeting on May 14th is rather more ambitious, and we shall, in addition to a large field of sports and racing cars, bring to you our annual race for Vintage sports, and Historic racing cars, one of the most popular events of the whole season.

If you are not a member of the Snetterton Motor Racing Club, may I extend to you an invitation to join, or to write to me for any information you would like. Our whole object in life is to bring to you motor racing that you can enjoy to the full.

Yours faithfully,

OLIVER SEAR.

Hon. Secretary.

Application Form for Membership

The Snetterton Motor Racing Club

Name

Permanent Address

I enclose herewith.....to value of £.....to cover

First year's subscription. Adult Member £1. Family £1 10s

Cheques to be made payable to "SNETTERTON MOTOR RACING CLUB"

Application Form and Fees to be forwarded to:—

Snetterton Motor Racing Club, Old Buckenham Hall, Norwich

PROGRAMME

START 2 p.m.

- EVENT 1. A 5-lap Race for Sports Cars up to 1100 c.c.
- EVENT 2. A 5-lap Race for Sports Cars over 1100 c.c.
- EVENT 3. A 10-lap Race for Formula Junior Cars
- EVENT 4. A 5-lap Race for Touring Cars Appendix J, Group 2. 3 classes:—
1000 c.c.; up to 2 litres; and over 2 litres.
- EVENT 5. A 10-lap Race for Formula Junior Cars.
- EVENT 6. A 5-lap Race for Grand Touring Cars Appendix J, Group 3, 3 classes:—
1000 c.c.; up to 2 litres; and over 2 litres.

KEY TO COLOURS

A—Aluminium, Blk—Black, Blk/W—Black and White, Blk/R—Black and Red, B—Blue, B/R—Blue and Red, BRG—British Racing Green, C—Cream, C/B—Cream and Blue, G—Green, G/Gd—Green and Gold, G/R—Green and Red, G/S—Green and Silver, Gy—Grey, Gy/R—Grey and Red, LB—Light Blue, M—Maroon, M/R—Maroon and Red, MB—Midnight Blue, PB—Pale Blue, PA—Polished Alloy, R—Red, S—Silver, W—White, P/Gy—Pearl Grey, G/C—Green Check, B/S—Blue Silver, Gy/B—Grey Blue, Bg—Beige, Bg/R—Beige Red, Chl—Charcoal.

FLAG SIGNALS

- RED**—Signal for complete and immediate stop.
- YELLOW** (waved)—Great danger, be prepared to stop.
- YELLOW** (motionless)—Take care, danger.
- BLUE** (waved)—Another competitor is trying to overtake you.
- BLUE** (motionless)—Another competitor is following you very closely.
- YELLOW** with vertical **RED STRIPES**—Take care, oil has been spilt somewhere on the road.
- WHITE**—An ambulance or service car is on the circuit.
- BLACK** shown with number—Signal for car bearing that number to stop at pits on next lap.
- BLACK** with **WHITE CHEQUERED**—Signal for end of race.

SNETTERTON SPEED TABLE—1 LAP=2.70 MILES

<i>m.s.</i>	<i>m.p.h.</i>	<i>m.s.</i>	<i>m.p.h.</i>	<i>m.s.</i>	<i>m.p.h.</i>	<i>m.s.</i>	<i>m.p.h.</i>	<i>m.s.</i>	<i>m.p.h.</i>
1.30	108.40	1.45	92.91	2.00	81.30	2.15	72.27	2.30	65.04
1.31	107.21	1.46	92.04	2.01	80.63	2.16	71.74	2.31	64.61
1.32	106.04	1.47	91.18	2.02	79.97	2.17	71.21	2.32	64.18
1.33	104.90	1.48	90.33	2.03	79.32	2.18	70.70	2.33	63.76
1.34	103.79	1.49	89.51	2.04	78.68	2.19	70.19	2.34	63.35
1.35	102.69	1.50	88.69	2.05	78.05	2.20	69.69	2.35	62.94
1.36	101.63	1.51	87.89	2.06	77.43	2.21	69.19	2.36	62.54
1.37	100.58	1.52	87.11	2.07	76.82	2.22	68.70	2.37	62.14
1.38	99.55	1.53	86.34	2.08	76.22	2.23	68.22	2.38	61.75
1.39	98.55	1.54	85.58	2.09	75.63	2.24	67.75	2.39	61.36
1.40	97.56	1.55	84.83	2.10	75.05	2.25	67.28	2.40	60.98
1.41	96.59	1.56	84.10	2.11	74.47	2.26	66.82		
1.42	95.65	1.57	83.38	2.12	73.91	2.27	66.37		
1.43	94.72	1.58	82.68	2.13	73.35	2.28	65.92		
1.44	93.81	1.59	81.98	2.14	72.81	2.29	65.48		

Motorcycles... Scooters... 3-wheelers...

NEW AND USED

You get the best from



on the best of easy terms

King's terms mean "Make-your-own-Terms"—terms which ensure that YOU are satisfied, that YOU get exactly what YOU want.

And you can get it right away for we can give immediate delivery of almost any make and model. Call in and see for yourself our marvellous selection.

NO GUARANTORS **NO** REFERENCES **NO** ENQUIRIES



SPROWSTON ROAD, NORWICH

AND AT

MILL ROAD, GREAT YARMOUTH

Open 9 a.m.—7 p.m. every day except Thursdays, open 9 a.m.—1 p.m.

EVENT ONE

A 5-LAP RACE FOR SPORTS CARS UP TO 1100 c.c.

No.	Colour	Entrant and Driver	Car	c.c.
41		I. Harrison-Hansley	Lola Sports	1100
42	R	Jim Russell R.D.S. (Dvr. D. Resa)	Cooper Sports Racing	997
43	R	Jim Russell R.D.S. (Dvr. R. Gaylor)	Cooper Sports Racing	1097
45	R	Miss Shelley Marten	Turner 950 Coupe	950
46	B	J. Ewer	Lola-Climax Sports Racing	1098
47	G	L. W. Keens	Lola Sports Racing	1098
48	B	C. Bond-Smith	Peregrine 1000	947
49	W	C. R. Holt	Austin Healey Sprite	948
50	W	M. M. Bell	Fairthorpe Electron Minor	966.6
51		Jim Russell R.D.S. (Dvr. C. Stokes)	Austin Healey Sprite	
52		D. Wilkinson (Dvr. J. Bekaert)	Lola Climax	1100
53		D. J. Cole	Austin Healey Sprite	948
54				

LAP SCORING CHART

To record position of cars for each lap place number of first car in space 1/1 and second car 2/1, and so on.

	1	2	3	4	5
1					
2					
3					
4					
5					
6					
7					
8					

1st..... 2nd..... 3rd..... Winner's Speed..... Fastest Lap.....

Winner's Speed: Mins.....Secs..... Fastest Lap: Mins.....Secs.....

**AFTER THE MEETING NO TRAFFIC IS PERMITTED ON THE
CIRCUIT WITHOUT SPECIFIC PERMISSION OF THE CLERK-
OF-THE-COURSE OR TRACK MANAGER**

ALL TRAFFIC SHOULD TRAVEL IN A CLOCKWISE DIRECTION

EVENT TWO

A 5-LAP RACE FOR SPORTS CARS OVER 1100 c.c.

No.	Colour	Entrant and Driver	Car	c.c.
55	R	D. Hobbs	Lotus Elite	1216
56	B	D. Howard	Jaguar XK120	3.8 litre
57	G	I. B. Baillie	Aston Martin DBR1/300..	2992
58	R	P. W. Kerrison	Triumph TR3A	1991
59	R	T. G. Lotinga	M.G. Sports	1600
60	B	C. M. Laird	Cooper Sports Racing ..	3442
61	B/W	Elizabeth Jones	Austin-Healey	2912
62				
63				

LAP SCORING CHART

To record position of cars for each lap place number of first car in space 1/1 and second car 2/1, and so on.

	1	2	3	4	5
1					
2					
3					
4					
5					
6					
7					
8					

1st..... 2nd..... 3rd..... Winner's Speed..... Fastest Lap.....

Winner's Speed : Mins.....Secs..... Fastest Lap : Mins.....Secs.....

Patrons are warned not to purchase Commodities from unauthorized persons. If molested to this effect, please report to the Police or the Official Stewards.

WILL SPECTATORS PLEASE REFRAIN FROM WALKING ON THE CROPS

EVENT THREE

A 10-LAP RACE FOR FORMULA JUNIOR CARS

No.	Colour	Entrant and Driver	Car	c.c.
1	Lt. B	W. F. Moss	Lotus Junior	997
2	R	H. W. Epps	Elva F.J.	997
3	G	Jim Russell R.D.S. (Dvr. F. Gardner)	Lotus F.J.	997
4	G	Jim Russell R.D.S. (Dvr. B. Glynn)	Lotus J.F.	997
5	G	Jim Russell R.D.S. (Dvr. E. Harris)	Lotus J.F.	997
6	G	Jim Russell R.D.S. (Dvr. J. Payne)	Lotus J.F.	997
7	G	Jim Russell R.D.S. (Dvr. P. Postlewaite)	Lotus J.F.	997
8	G	Jim Russell R.D.S. (Dvr. G. Scotton)	Lotus J.F.	997
9	Y	Jim Russell R.D.S. (Dvr. V. Colin)	Lotus J.F.	997
10	G	Jim Russell R.D.S. (Dvr. R. Swift)	Elva J.F.	1097
11	R	Jim Russell R.D.S. (Dvr. C. Bywater)	Elva J.F.	997
12	G	Jim Russell R.D.S. (Dvr. J. Negrey)	Lotus J.F.	997
14	B	Jim Russell R.D.S. (Dvr. E. April)	Lotus J.F.	997
15	G	Jim Russell R.D.S. (Dvr. H. Turner)	Lotus J.F.	997
16	B	J. B. Alderslade	Cooper F.J.	1089
17	R/W	J. M. Bramall	Lotus Junior	848
18	W/Blk	The Chequered Flag Ltd. (Dvr. M. Beuttler)	Gemini Mk. 3A	997
19	W/Blk	The Chequered Flag Ltd. (Dvr. G. Warner)	Gemini Mk. 3A	997
20	G	Ecurie Chiltern (Dvr. M. Bond) ..	Lotus F.J.	997
21	Blk/W	Cambridge Racing (Dvr. J. Bates)	Lola F.J.	997
22	Blk/W	Cambridge Racing (Dvr. J. A. B. Taylor)	Lola F.J.	997
23	B	Scuderia Light Blue (Dvr. H. P. K. Dibley)	Lola F.J.	997
24	S	G. G. Smith	Lola F.J.	997
25	B	W. B. Pinckney	Lotus Junior 20	998
26	B	D. H. Bishton	Elva F.J.	992

LAP SCORING CHART

To record position of cars for each lap place number of first car in space 1/1 and second car 2/1, and so on.

	1	2	3	4	5	6	7	8	9	10
1										
2										
3										
4										
5										
6										
7										
8										

1st..... 2nd..... 3rd..... Winner's Speed..... Fastest Lap.....

Winner's Speed : Mins.....Secs..... Fastest Lap : Mins.....Secs.....

EVENT FOUR

A 5-LAP RACE FOR TOURING CARS
3 CLASSES: 1000 c.c.; up to 2 litres; and over 2 litres

CLASS A—Up to 1000 c.c.

No.	Colour	Entrant and Driver	Car	c.c.
64	B	G. C. Shepherd	Austin 7 Saloon ..	870
65	S	H. W. Epps	Lotus 7A	997
66		Jim Russell R.D.S. (Dvr. K. Hall) ..	Mini Minor	848
67	R	J. J. Williams	Austin Seven	848
68	Lt. Gy	A. C. Todd	Austin Seven (1961) ..	848
69	G	C. E. Cole	Austin A35	948
70	B	John Young (Dvr. B. A. Wood) ..	Ford 105E Anglia ..	997

CLASS B—Up to 2 litres

71	R	P. Pilsworth	Riley 1.5	1489
72				
73				

CLASS C—Over 2 litres

74
75
76

LAP SCORING CHART

To record position of cars for each lap place number of first car in space 1/¹ and second car 2/¹, and so on.

	1	2	3	4	5
1					
2					
3					
4					
5					
6					
7					
8					

CLASS A

1st..... 2nd..... 3rd..... Winner's Speed..... Fastest Lap.....

Winner's Speed : Mins.....Secs..... Fastest Lap : Mins.....Secs.....

CLASS B

1st..... 2nd..... 3rd..... Winner's Speed..... Fastest Lap.....

Winner's Speed : Mins.....Secs..... Fastest Lap : Mins.....Secs.....

CLASS C

1st..... 2nd..... 3rd..... Winner's Speed..... Fastest Lap.....

Winner's Speed : Mins.....Secs..... Fastest Lap : Mins.....Secs.....

EVENT FIVE

A 10-LAP RACE FOR FORMULA JUNIOR CARS

No.	Colour	Entrant and Driver	Car	c.c.
29	B.R.G.	G. H. Saunders (Dvr. J. H. Saunders)	Lotus Racing	997
28	S	Merlyn Cars (Dvr. P. Pilsworth) ..	Merlyn Mk. II F.J. ..	997
27	R	A. R. Coleby	Envoy F.J.	997
1	Lt. B	W. F. Moss	Lotus Junior	997
7	G	Jim Russell R.D.S. (Dvr. R. Legg)	Lotus J.F.	997
8	G	Jim Russell R.D.S. (Dvr. S. Fox) ..	Lotus J.F.	997
6	G	Jim Russell R.D.S. (Dvr. J. Eaves)	Lotus J.F.	997
9	Y	Jim Russell R.D.S. (Dvr. M. Gass-ler)	Lotus J.F.	997
10	G	Jim Russell R.D.S. (Dvr. M. Hall) ..	Elva J.F.	1097
16	B	J. B. Alderslade	Cooper F.J.	1089
17	R/W	J. M. Bramall	Lotus Junior	848
18	W/Blk	The Chequered Flag Ltd. (Dvr. M. Beuttler)	Gemini Mk. 3A	997
19	W/Blk	The Chequered Flag Ltd. (Dvr. G. Warner)	Gemini Mk. 3A	997
24	S	G. G. Smith	Lola F.J.	997
26	B	D. H. Bishton	Elva F.J.	992
5	G	Jim Russell R.D.S. (Dvr. S. Wright)	Lotus J.F.	997

LAP SCORING CHART

To record position of cars for each lap place number of first car in space 1/¹ and second car 2/¹, and so on.

	1	2	3	4	5	6	7	8	9	10
1										
2										
3										
4										
5										
6										
7										
8										

1st..... 2nd..... 3rd..... Winner's Speed..... Fastest Lap.....

Winner's Speed : Mins.....Secs..... Fastest Lap : Mins.....Secs.....

FORTHCOMING EVENTS

Motor Racing

Sundays – 14th May 18th June 23rd July

SATURDAY, 30th SEPTEMBER

VANWALL TROPHY & AUTOSPORT '3 HOURS' MEETING

Sunday, 8th October, B.R.S.C.C. Meeting

EVENT SIX

A 5-LAP RACE FOR GRAND TOURING CARS APPENDIX J GROUP 3

3 CLASSES: 1000 c.c.; up to 2 litres; and over 2 litres

CLASS A—Up to 1000 c.c.

No.	Colour	Entrant and Driver	Car	c.c.
53		D. J. Cole	Austin Healey Sprite ..	948
70	B	John Young (Dvr. B. A. Wood) ..	Ford 105E Anglia ..	997
77	Y/Blk	Team Boomerang (Dvr. D. P. Merfield)	Ford Anglia	997
78	R	C. M. M. Williams	Aust. Healey Sebring Sprite	975
79	Blk	P. Clarke	Sprite	994
80	B	J. Gates	Marcos G.T.	997
48	B	C. Bond-Smith	Peregrine 1000	947
82	B	F. P. E. Dewe	Aust. Healey Sebring Sprite	976
83				

CLASS B—Up to 2 litres

84	R	I. L. Taylor	M.G. Touring Car ..	1588
85	Blk/W	The Chequered Flag Ltd. (Dvr. G. Warner)	Lotus Elite	1216
86	B	C. J. Toten	Triumph TR3	1991
87	B	L. C. Fryer	T.V.R. Grantura	1216
88	G	D. C. Barber	Lotus Elite	1216
89	B	R. A. V. Staples	A.C. Ace	1971
90	Cr	M. Cremer (to be nominated) ..	Triumph TR2	1997
91	G	R. J. Crosfield	M.G.A. Twin Cam ..	1588
59	R	T. G. Lotinga	M.G. Sports	1600
92	Blk	B. H. Withers	Triumph TR2	1991
93	Cr	P. W. Marten	Morgan Plus 4	1991
94				

CLASS C—Over 2 litres

95	Dk. B	P. I. B. Macdonald	Jaguar XK140 F.H. Coupe	3442
96	R	H. W. Epps	Aston Martin G.T.4 ..	3670
61	B/W	Elizabeth Jones	Aust. Healey (ftd. hard top)	2912
56	B	D. Howard	Jaguar XK120	3.8 litre
98	W/B	Roy North Motors (Dvr. P. H. Arnold)	Triumph TR3A	2136
99	R	S. Wright	Mercedes 300 SL	2996

LAP SCORING CHART

	1	2	3	4	5
1					
2					
3					
4					
5					
6					
7					
8					

CLASS A 1st.....2nd.....3rd.....Winner's Speed.....Fastest Lap.....

CLASS B 1st.....2nd.....3rd.....Winner's Speed.....Fastest Lap.....

CLASS C 1st.....2nd.....3rd.....Winner's Speed.....Fastest Lap.....

THE SNETTERTON MOTOR RACING CLUB

LADIES AND GENTLEMEN,

The first rule of the club, does I think, say, just what we are here for, i.e.: “(a) To encourage social intercourse between members of the club and to provide facilities for the meeting of one another to discuss, promote and generally take part in the sport of Motor Racing, Touring, and in fact any form of competition connected with motoring”; and “(b) To run a Social Club for the benefit of all persons interested in the Snetterton Motor Racing Circuit.” Now that is a pretty tall order, so let me be more explicit.

Obviously the main interest of our members is the running of motor race meetings at Snetterton, whether on a National scale—or a Club “dice” for the fun of the novice; in this respect we run five major race meetings a year, and a Club Sprint. We are also invited to most club meetings run by other clubs at Snetterton, so if in fact we are not the organisers, there is ample opportunity for the beginner to get experience. There is, I suppose, something of interest going on at Snetterton almost every week-end of the year in which members very often take a prominent part. Now, in addition to our many sporting activities, the club social life is well worth your consideration. We have our own Registered Club House in the Paddock Area of the Circuit, a wide variety of beers, wines and spirits are always available at reasonable prices; access to this Club House (and the Paddock Area) is permitted to members, their wives and families, on race days and, in fact, at all times (families must come on a “Family Membership”).

Guest tickets to the Club House are also available at 5s. each, for each race meeting. Club members may also buy the “Pit Roof Passes” which are strictly limited. There is a hard roof on the Club House giving a fine view of the racing. During the winter months film shows, club nights, talks, etc. are also held in the Club House at the Circuit.

In addition to the above items, a monthly news letter is sent out to all members giving details of our activities, and items of news, posters, carstickers, etc., are also sent to all members.

This is a live, active club, and does, we feel, offer the Snetterton race-goer excellent value for his £1 or 30s., whichever the case may be; our steadily increasing membership does, I think, verify this.

We would welcome YOU as a member.

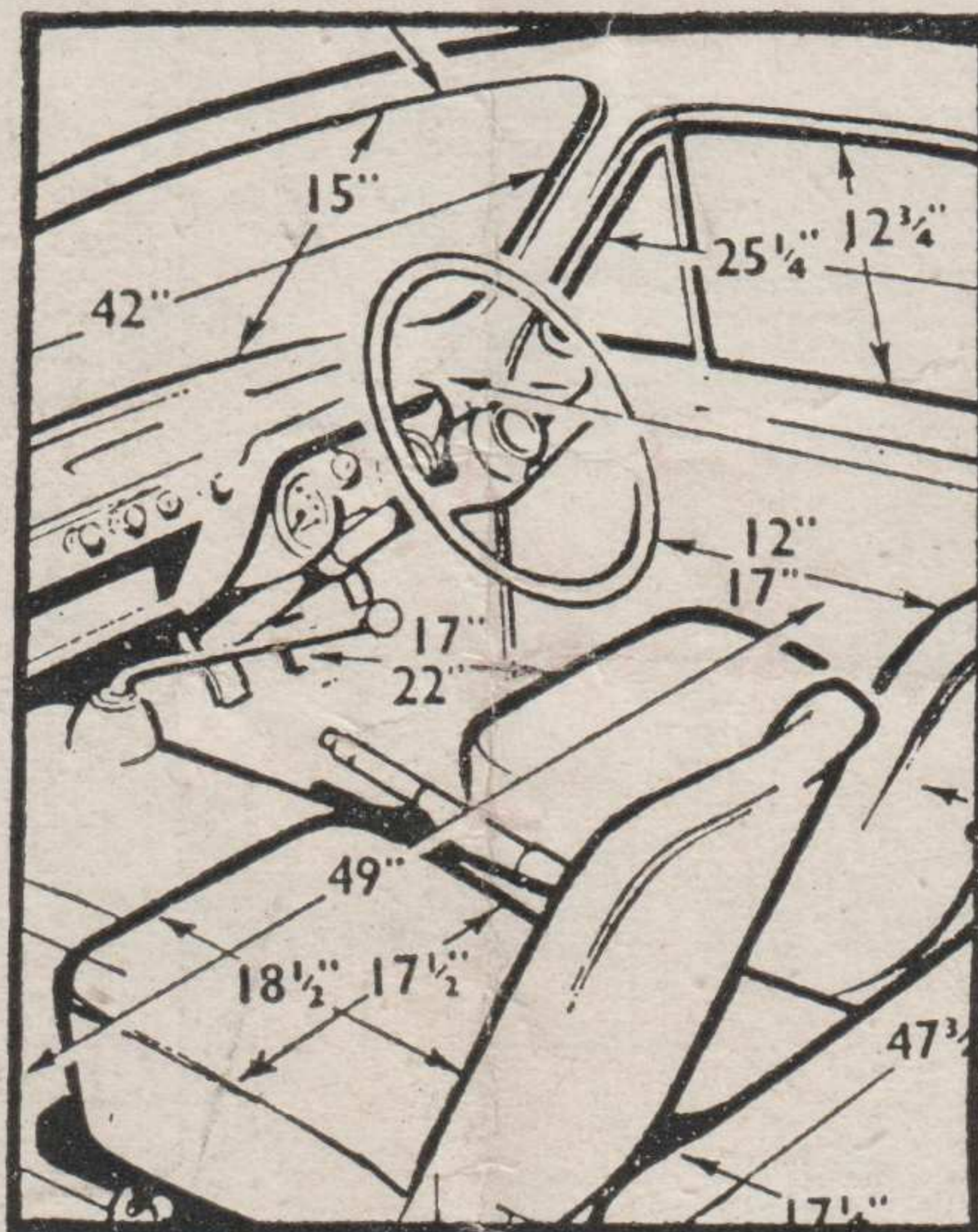
Yours faithfully,

OLIVER SEAR,
Hon. Secretary.



The Complete Motoring Journal

Well-informed motorists read *The Motor* for the road tests, details of new cars and accessories, advice on maintenance, touring guidance news of the motor industry and the best sports reports and pictures.



Wednesdays One Shilling