

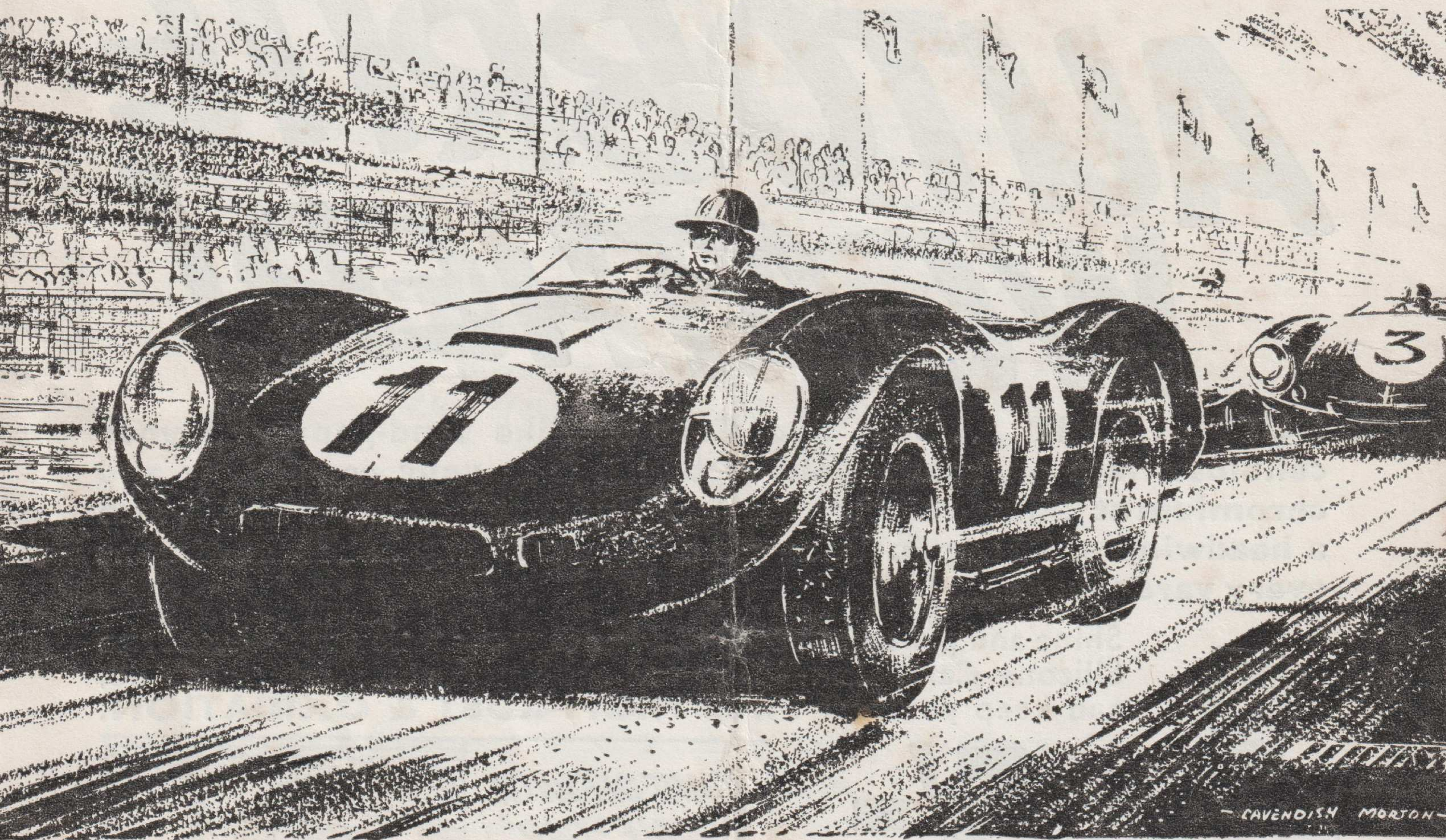
SNETTERTON MOTOR RACING CIRCUIT

NATIONAL BENZOLE TROPHY RACE MEETING

Saturday, 9th August, 1958

OFFICIAL PROGRAMME 1/6

ORGANISED BY THE WEST ESSEX CAR CLUB LIMITED



The **Autocar**

BEST FROM START TO FINISH
FRIDAYS 1s.



**THIS IS
AUTOBRITE
WEATHER!**

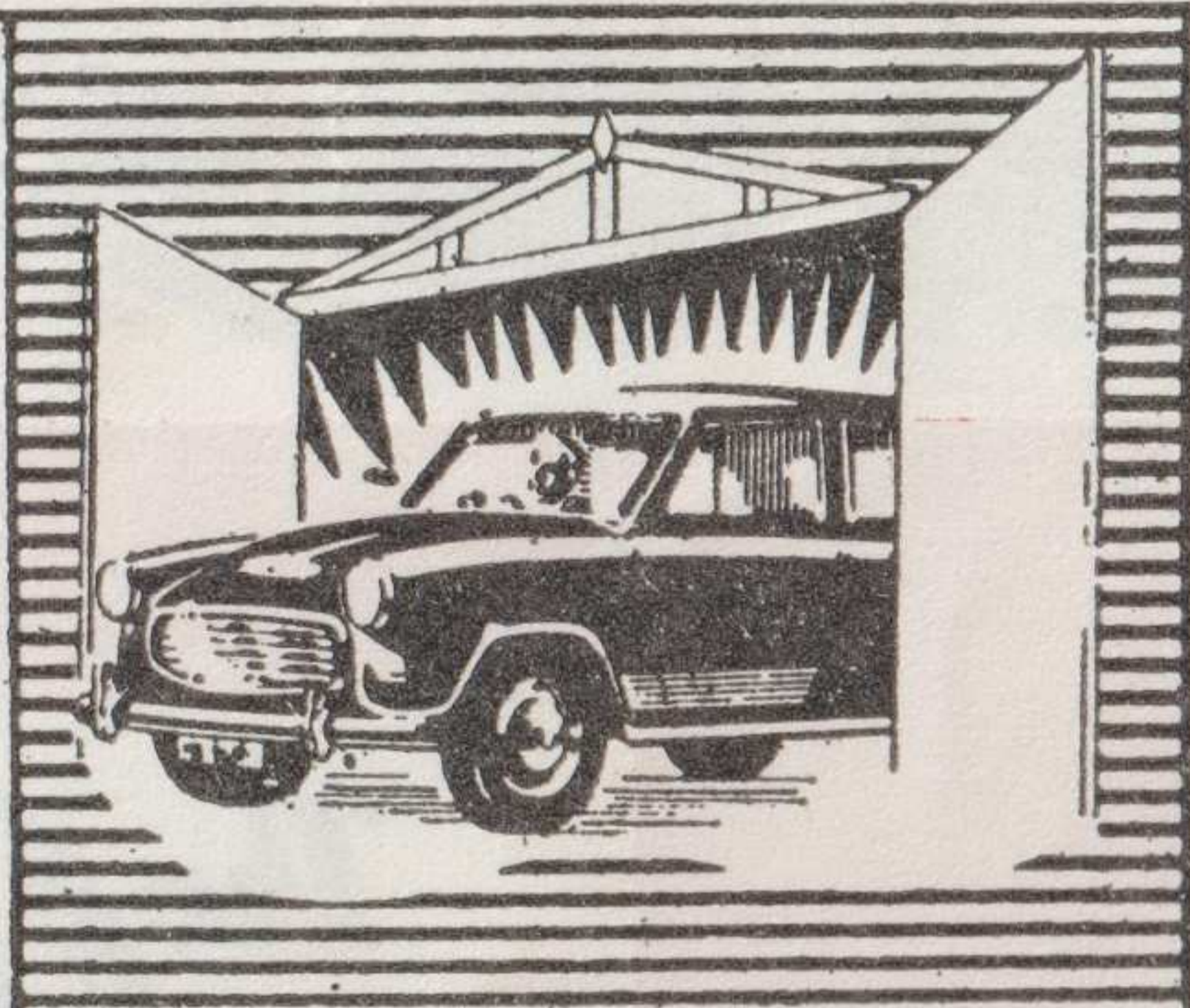
DUST....GRIT.... Dust and Grit act like sand-paper on your cellulose, lays on roads waiting to hit into your coachwork and chromium at killing velocity. Just imagine motoring at 45 m.p.h. into a headwind of 25 m.p.h. Your car suffers a 70 m.p.h. bombardment every yard you drive!!!

Shine and protect your car in one easy operation with Autobrite Silicone Car Polish—Laugh at the worst the weather can do, and keep your car **FREE FROM RUST & OXIDATION.**



5/-
ENOUGH FOR
3 CARS!

START OFF WITH
WHOLE-CAR
SILICONE
SHINE AND
PROTECTION



THE SILICONE CAR POLISH

GUARANTEE—Better than any Polish you have ever used—or your Money back IN FULL.

E. R. HOWARD LTD., IPSWICH

**NATIONAL BENZOLE TROPHY
RACE MEETING**

AT THE SNETTERTON CIRCUIT

On Saturday, 9th August, 1958

A RESTRICTED EVENT GOVERNED BY THE STANDING SUPPLEMENTARY REGULATIONS OF THE R.A.C., AND THE ADDITIONAL SUPPLEMENTARY REGULATIONS HEREWITH.

PERMIT No. R.418.

OFFICIALS

Organizing Committee : The Competitions Committee of The West Essex Car Club Ltd.

President : THE HON. GERALD LASCELLES

Chairman : JOHN HOLMES

R.A.C. Steward : R. PRIESTLEY

W.E.C.C. Stewards : J. GOTT AND A. F. RIVERS-FLETCHER

Judges : CAPT. BUNBURY, J. OGIER AND CMDR. P. E. HESELTINE

Clerk of the Course : J. M. A. EDMONDSON

Secretary : J. TRIMBLE

Press Officer : E. J. WORLEY

Chief Marshal : A. E. HAWKINS

Chief Flag Marshal : D. CURRIE

Chief Spectator Marshal : A. E. HUDSON

Chief Paddock Marshal : M. BERG

R.A.C. Timekeeper : R. L. CLARKE

Scrutineers : F. C. MATHEWS AND F. MATHEWS

Starter : C. PERKINS

Commentators : R. C. CROUCH AND R. RICHARDS

Doctors : K. SLACK AND J. MCCREA

ACKNOWLEDGMENTS :

All those who are on duty as Marshals at this meeting.
The St. John Ambulance Brigade.

Amplification by E.R.A. Co. Ltd., Norwich.

A WORD ABOUT TODAY'S MEETING

The West Essex Car Club makes a welcome return to Snetterton to-day, after an absence from circuit racing of over two years, with a programme of events designed more specifically for the amateur enthusiast than the works-entered and sponsored racing teams. For this reason we have not included events for Racing Cars as we feel they are well catered for elsewhere.

The day promises to produce some really closely fought races, commencing with the cars complying to the Formulae laid down by the 750 Car Club. We are grateful to Messrs. Ashley Laminates and Messrs. Falcon Body Shells who are presenting the Trophies for the 750 and 1172 cars.

The National Benzole Trophy will be contested by Sports-Racing cars, complying with Appendix "C" of the International Sporting Code, and the more normal Production Sports Cars will have a race of their own, a Trophy being presented to the winner.

No meeting would be complete without a race for Lotus Sports Cars, and ours is no exception. We have deliberately restricted the event to cars up to 1,100 c.c., once again to give the "boys" a chance.

The event for "The W. Lyons Trophy," which was presented to the Club by the Managing Director of the Jaguar Car Company, brings to the line various examples of the marque which have made these cars so famous throughout the world, including the Le Mans winning "C" and "D" Types.

Finally the West Essex Car Club would like to thank Mr. Oliver Sear, without whose co-operation this meeting could not have been held.

The Committee of the Club hope you will have an enjoyable day's sport, and that the "weather-man" has the blue skies organised!

We, on our part, have done our best to bring you some exciting racing. Thank you for coming. M.B.

PROGRAMME

- Race 1. 10-lap Scratch Race for Sports Cars complying with the 750 Formulae.
- Race 2. 10-lap Scratch Race for Lotus Sports Cars under 1,100 c.c.
- Race 3. 10-lap Scratch Race for Sports Cars in three classes :
Class A : Up to 1,500 c.c. ; Class B : 1,501—3,000 c.c. ; Class C : Over 3,000 c.c.
- Race 4. 10-lap Scratch Race for Sports Cars complying with International Sporting Code Appendix "C" in three classes :
Class A : Up to 1,500 c.c. : Class B : 1,501—3,000 c.c. : Class C : Over 3,000 c.c.
- Race 5. 10-lap Scratch Race for Sports Cars complying with the 1,172 Formulae.
- Race 6. 10-lap Handicap Race for Jaguar Cars Types XK120, 140, 150, C. and D.

AWARDS

- Race 1. The Ashley Laminates Trophy and Plaques for 2nd and 3rd.
- Race 2. Lotus Sports Cars. Cup for Winner and Plaques for 2nd and 3rd.
- Race 3. Sports Cars. Cup for Winner and Plaques for 2nd and 3rd. Plaques for Winners of each class, if more than 5 entries.
- Race 4. The National Benzole Trophy for Outright Winner. Club Plaques for 2nd and 3rd. Cup for Winner in each class if more than 5 entries.
- Race 5. The Falcon Body Shells Trophy and Plaques for 2nd and 3rd.
- Race 6. The W. Lyons Trophy for Winner. Club Plaques for 2nd and 3rd.

EVENT ONE

10-lap RACE FOR SPORTS CARS complying with the 750 FORMULAE

No.	Entrant	Driver	Car	c.c.'s
1	W. Owen Roberts	Entrant	Austin	750
2	Ecurie Midge	R. Lewcock	Austin	750
3	John Wilks	Entrant	Austin	747
4	P. A. Cross	Entrant	Austin	747
5	T. R. Clark	Entrant	Austin Special	750
6	R. D. Lee	Entrant	L.R.M.	747
7	D. A. Mocatta	P. K. Dawe	Austin	750
8	G. R. Spence	Entrant	Millard	750
9	Lulworth Equipe	P. F. Harvey	Austin	750
10	Lulworth Equipe	R. G. Morton	Austin	750
11	R. Clark	Entrant	Austin	747
12	Joscelin Smith	Entrant	Austin	750
13	Ecurie Skint	D. L. Kamm	Austin	750
14	J. R. D. Heseltine	Entrant	Austin Van Ford II	747

LAP SCORING CHART

To record position of cars for each lap place number of first car in space 1/1 and second car 2/1, and so on.

	1	2	3	4	5	6	7	8	9	10
1										
2										
3										
4										
5										
6										
7										
8										

1st..... 2nd..... 3rd..... Winner's Speed..... Fastest Lap.....

Winner's Speed : Mins.....Secs..... Fastest Lap : Mins.....Secs.....

STARTING POSITIONS

Grid positions in all races will be determined by lap times recorded during official practice, except for the W. Lyons Trophy Race which will be a handicap event.

Flag Signals

- RED**—Signal for complete and immediate stop.
- YELLOW** (waved)—Great danger, be prepared to stop.
- YELLOW** (motionless)—Take care, danger.
- BLUE** (waved)—Another competitor is trying to overtake you.
- BLUE** (motionless)—Another competitor is following you very closely.
- YELLOW** with vertical **RED STRIPES**—Take care, oil has been spilt somewhere on the road.
- WHITE**—An ambulance or service car is on the circuit.
- BLACK** shown with number—Signal for car bearing that number to stop at pits on next lap.
- BLACK** with **WHITE CHEQUERED**—Signal for end of race.

EVENT TWO

10-lap RACE FOR LOTUS SPORTS CARS under 1,100 c.c.

No.	Entrant	Driver	Car	c.c.
41	Gilby Eng. Co. ...	K. Greene...	Lotus ...	1097
42	J. Campbell-Jones ...	Entrant ...	Lotus ...	1098
43	R. C. Kerrison ...	Hon. M. Fitzalan-Howard	Lotus ...	1098
44	Innes Ireland Ltd. ...	E. P. Heath ...	Lotus ...	1098
45	Innes Ireland Ltd. ...	S. C. S. Martyn ...	Lotus ...	1098
46	Innes Ireland Ltd. ...	M. J. C. Taylor ...	Lotus ...	1098
47	Innes Ireland Ltd. ...	J. F. Westcott ...	Lotus ...	1098
50	R. N. Robinson ...	A. P. Belcher ...	Lotus ...	1097
90	F. Warnell ...	Entrant ...	Lotus ...	1098
91	Kingham Motor Co. Ltd.	M. J. Kingham ...	Lotus ...	1098
92	J. G. Tallis ...	Entrant ...	Lotus ...	1098
93	D. G. S. Buxton...	Entrant ...	Lotus ...	1098

LAP SCORING CHART.

LAPS

To record position of cars for each lap place number of first car in space 1/1 and second car 2/1, and so on.

	1	2	3	4	5	6	7	8	9	10
1										
2										
3										
4										
5										
6										
7										

1st..... 2nd..... 3rd..... Winner's Speed..... Fastest Lap.....

Winner's Speed : Mins.....Secs..... Fastest Lap : Mins.....Secs.....

FORTHCOMING MOTOR RACE MEETINGS

Sunday, September 7th,
Scott-Brown Memorial Trophy

Saturday, October 11th, Autosport "3 Hours"
with supporting events

Motor Cycle Racing, Sunday Sept. 21st

EVENT THREE

10-lap RACE FOR SPORTS CARS in 3 classes. Up to 1,500 c.c. ; 1,501—3,000 c.c. ; and over 3,000 c.c.

CLASS A : Up to 1,500 c.c.

No.	Entrant	Driver	Car	c.c.
23	Equipe Maritime ...	C. M. Egerton ...	Buckler ...	1172
60	L. G. Brown ...	Entrant ...	M.G.A. ...	1489
61	D. N. Gouk ...	Entrant ...	M.G.A. ...	1489
62	R. G. E. Catt ...	Entrant ...	Berkeley ...	492
63	Smith-Bekaert ...	W. J. Smith ...	M.G.A. ...	1489

CLASS B : 1,501—3,000 c.c.

64	B. A. Bengue ...	Entrant ...	Austin Healey ...	2639
65	L. J. Coe ...	Entrant ...	Triumph ...	1991
66	A. B. Rees ...	Entrant ...	A.C. ...	1991
67	H. G. Walldorff ...	Entrant ...	Triumph T.R.3 ...	1991
68	F. Warnell ...	Entrant ...	A.C. ...	1971
69	J. R. Stoop ...	Entrant ...	Frazer Nash ...	1971
71	A. G. Oliver ...	Entrant ...	Atalanta ...	2553

CLASS C : Over 3,000 c.c.

70	W. P. Sheppard ...	Entrant ...	Jaguar... ...	3442
----	--------------------	-------------	---------------	------

85 Gibson

LAP SCORING CHART

To record position of cars for each lap place number of first car in space 1/1 and second car 2/1, and so on.

	1	2	3	4	5	6	7	8	9	10
1										
2										
3										
4										
5										
6										
7										
8										

CLASS A up to 1500 c.c.

1st..... 2nd..... 3rd..... Winner's Speed..... Fastest Lap.....

Winners's Speed : Mins.....Secs..... Fastest Lap : Mins.....Secs.....

CLASS B 1501 to 3000 c.c.

1st..... 2nd..... 3rd..... Winner's Speed..... Fastest Lap.....

Winner's Speed : Mins.....Secs..... Fastest Lap : Mins.....Secs.....

CLASS C over 3000 c.c.

1st..... 2nd..... 3rd..... Winner's Speed..... Fastest Lap.....

Winner's Speed : Mins.....Secs..... Fastest Lap : Mins.....Secs.....

EVENT FOUR

THE NATIONAL BENZOLE TROPHY

10-lap RACE FOR SPORTS CARS complying with INTERNATIONAL SPORTING CODE APPENDIX "C" in 3 classes. Up to 1,500 c.c.; 1,501—3,000 c.c.; and over 3,000 c.c.

CLASS A : Up to 1,500 c.c.

No.	Entrant	Driver	Car	c.c.
40	G. F. Dark ...	Entrant ...	Dolphin ...	1097
41	Gilby Eng. Co. ...	K. A. Greene ...	Lotus ...	1097
42	J. Campbell-Jones ...	Entrant ...	Lotus ...	1098
43	R. C. Kerrison ...	Entrant ...	Lotus ...	1098
44	Innes Ireland Ltd. ...	E. P. Heath ...	Lotus ...	1098
45	Innes Ireland Ltd. ...	S. C. S. Martyn ...	Lotus ...	1098
46	Innes Ireland Ltd. ...	M. J. C. Taylor ...	Lotus ...	1098
47	Innes Ireland Ltd. ...	J. F. Westcott ...	Lotus ...	1098
48	Tojeiro Car Co.	Tojeiro ...	1100
49	R. B. McKee ...	Entrant ...	Elva Climax ...	1098
50	R. N. Robinson ...	A. P. Belcher ...	Lotus ...	1097
91	Kingham Motor Co. Ltd. ...	M. J. Kingham ...	Lotus ...	1098
93	D. G. S. Buxton... ..	Entrant ...	Lotus ...	1098

CLASS B : 1,501—3,000 c.c.

51	Jean Bloxham ...	Entrant ...	Aston Martin ...	2922
----	------------------	-------------	------------------	------

CLASS C : Over 3,000 c.c.

52	Smith-Bekaert ...	J. Bekaert ...	H.W.M. ...	3442
53	J. B. Rodger ...	Entrant ...	Jaguar... ..	3442
54	P. J. Sargent ...	Entrant ...	Jaguar... ..	3442
55	Peter Mould ...	Entrant ...	Cooper Jaguar D Type	3442
56	R. F. Bloxam ...	Entrant ...	H.W.M. Jaguar ...	3442
57	P. M. Salmon ...	Michael Salmon ...	Jaguar C Type ...	3442

LAP SCORING CHART LAPS

	1	2	3	4	5	6	7	8	9	10
1										
2										
3										
4										
5										
6										
7										
8										

CLASS (A) 1st..... 2nd..... Winner's Speed..... Fastest Lap.....
 CLASS (B) 1st..... 2nd..... Winner's Speed..... Fastest Lap.....
 CLASS (C) 1st..... 2nd..... Winner's Speed..... Fastest Lap.....

EVENT FIVE

10-lap RACE FOR SPORTS CARS complying with the 1,172 FORMULAE

No.	Entrant	Driver	Car	c.c.
20	A. R. Wershat ...	Entrant ...	Special ...	1172
21	R. W. Waters ...	Entrant ...	Lotus ...	1172
23	Equipe Maritime ...	D. C. Godfrey ...	Buckler ...	1172
24	B. R. Hart ...	Entrant ...	Lotus ...	1172
25	P. Boshier Jones ...	Entrant ...	Lotus ...	1172
26	J. Woolfe... ..	Entrant ...	Lotus ...	1172
27	J. Salthouse ...	Entrant ...	Ford Special ...	1172
28	Ecurie Gnuts ...	R. A. V. Staples ...	Lotus ...	1172
30	S. Benton ...	Entrant ...	Lotus ...	1172
31	A. G. Rossi-Ashton ...	Entrant ...	Lotus ...	1172
32	D. Hitches ...	Entrant ...	Lotus ...	1172

	1	2	3	4	5	6	7	8	9	10
1										
2										
3										
4										
5										
6										
7										
8										

1st..... 2nd..... 3rd..... Winner's Speed..... Fastest Lap.....

Winner's Speed : Mins.....Secs..... Fastest Lap : Mins.....Secs.....

Join the West Essex Car Club Ltd.

APPLICATION FORM ON PAGE 11

Please dispose of your litter at home, NOT here!

EVENT SIX

W. LYONS TROPHY FOR JAGUAR CARS (ON HANDICAP)

10-lap RACE FOR JAGUAR CAR TYPES XK120, 140, 150, C, and D.

No.	Entrant	Driver	Car	c.c.
53	J. B. Rodger ...	Entrant ...	Jaguar D Type ...	3442
54	P. J. Sargent ...	Entrant ...	Jaguar C Type ...	3442
80	Anatole Semenov Jnr. ...	Entrant ...	Jaguar XK140 ...	3442
57	P. M. Salmon ...	Michael Salmon ...	Jaguar C Type ...	3442
83	G. M. Crozier ...	Entrant ...	Jaguar XK120C ...	3442
84	D. W. A. Chamberlain ...	Entrant ...	Jaguar XK140 ...	3442
70	W. P. Sheppard ...	Entrant ...	Jaguar XK120 ...	3442
85	R. A. Gibson ...	Entrant ...	Jaguar XK140 ...	3442

LAP SCORING CHART

To record position of cars for each lap place number of first car in space 1/1 and second car 2/1, and so on.

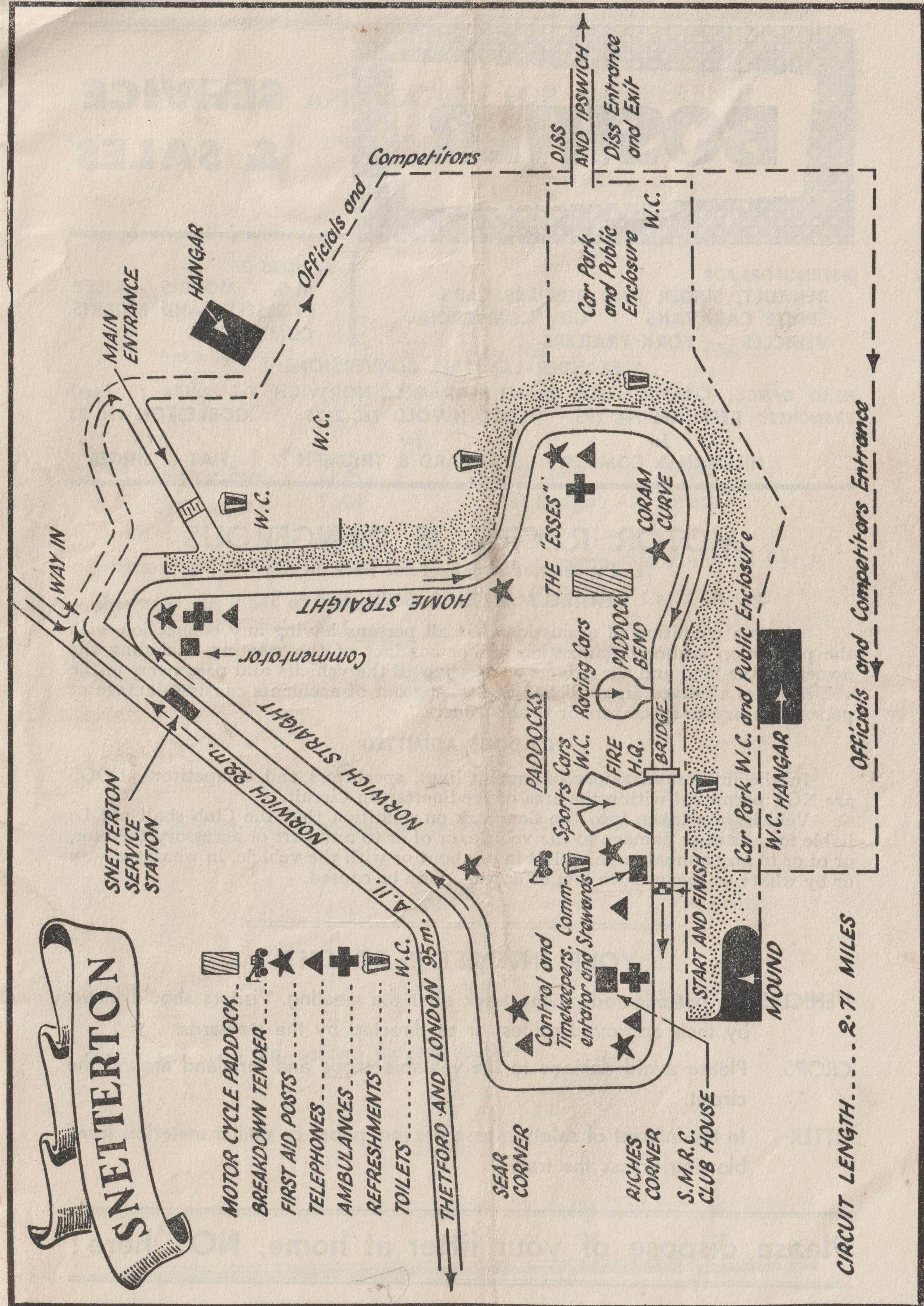
	1	2	3	4	5	6	7	8	9	10
1										
2										
3										
4										
5										
6										
7										
8										

1st.....2nd.....3rd..... Winner's Speed.....Fastest Lap.....

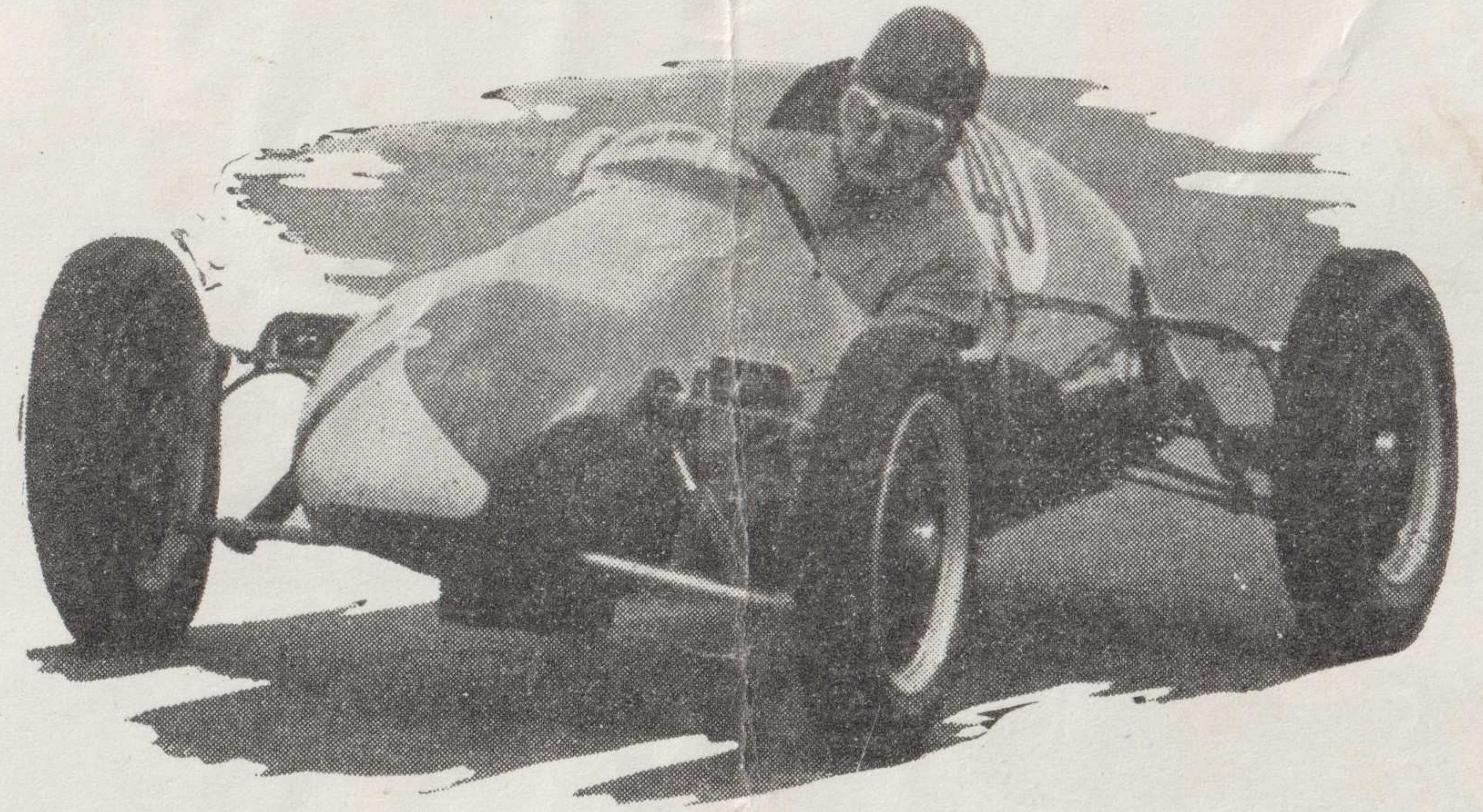
Winner's Speed : Mins.....Secs..... Fastest Lap : Mins.....Secs.....

SNETTERTON SPEED TABLE - 1 LAP = 2.70 MILES

m.s.	m.p.h.	m.s.	m.p.h.	m.s.	m.p.h.	m.s.	m.p.h.	m.s.	m.p.h.
1.40	97.2	1.56	83.8	2.12	73.6	2.28	65.7	2.44	59.3
1.41	96.3	1.57	83.1	2.13	73.1	2.29	65.2	2.45	58.9
1.42	95.4	1.58	82.4	2.14	72.5	2.30	64.8	2.46	58.4
1.43	94.4	1.59	81.7	2.15	72.0	2.31	64.6	2.47	58.2
1.44	93.5	2.00	81.0	2.16	71.5	2.32	63.9	2.48	57.9
1.45	92.6	2.01	80.3	2.17	71.0	2.33	63.5	2.49	57.5
1.46	91.8	2.02	79.7	2.18	70.4	2.34	63.1	2.50	57.2
1.47	90.9	2.03	79.0	2.19	69.9	2.35	62.7	2.51	56.8
1.48	90.0	2.04	78.4	2.20	69.4	2.36	62.3	2.52	56.5
1.49	89.2	2.05	77.8	2.21	69.0	2.37	61.9	2.53	56.2
1.50	88.4	2.06	77.2	2.22	68.5	2.38	61.5	2.54	55.9
1.51	87.6	2.07	76.5	2.23	68.0	2.39	61.1	2.55	55.5
1.52	86.8	2.08	75.9	2.24	67.5	2.40	60.7	2.56	55.2
1.53	86.0	2.09	75.3	2.25	67.0	2.41	60.3	2.57	54.9
1.54	85.3	2.10	74.8	2.26	66.6	2.42	60.0	2.58	54.6
1.55	84.5	2.11	74.2	2.27	66.1	2.43	59.6	2.59	54.3



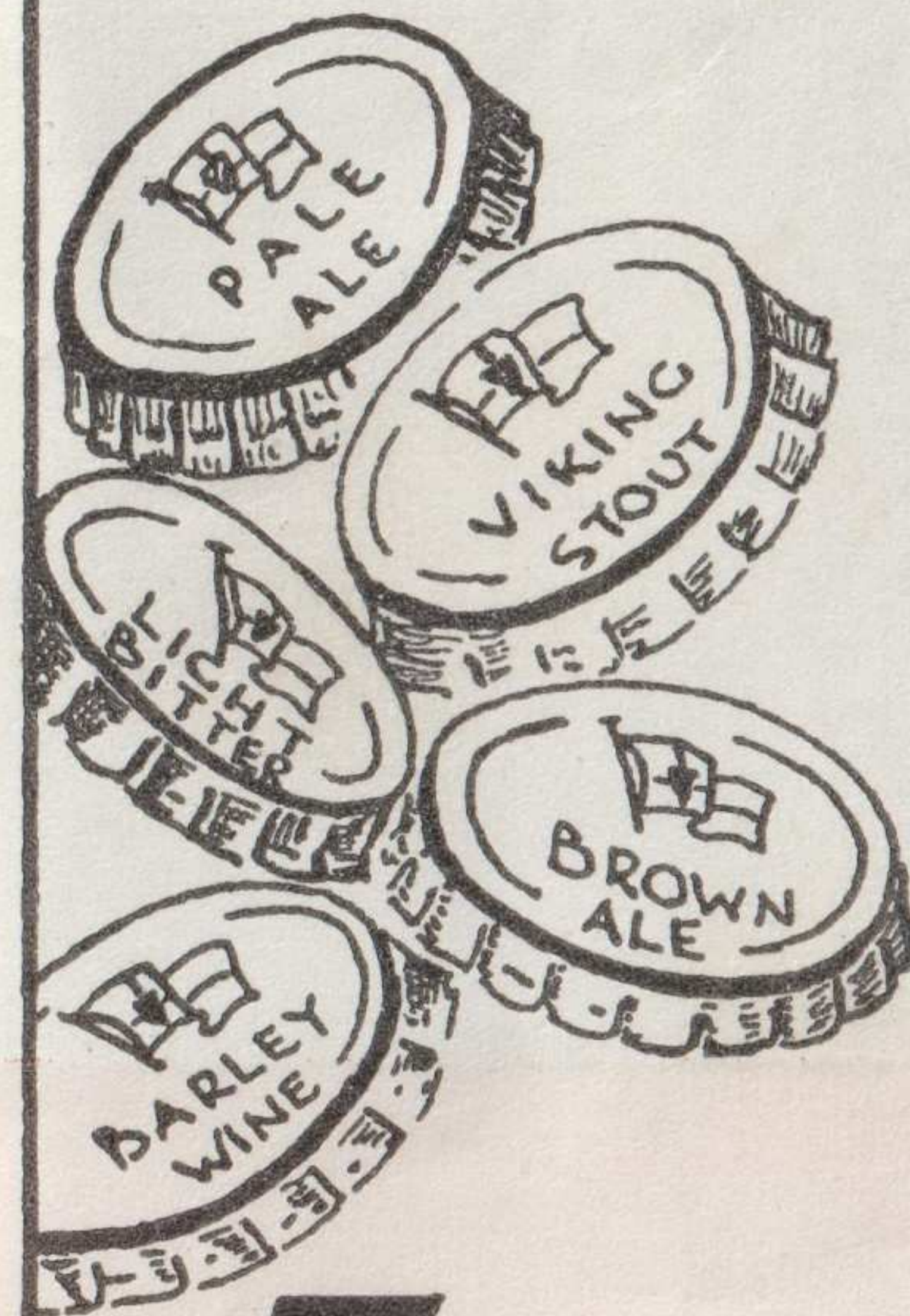
Tony Marsh starts the 1958 season



ahead of
the field
by using



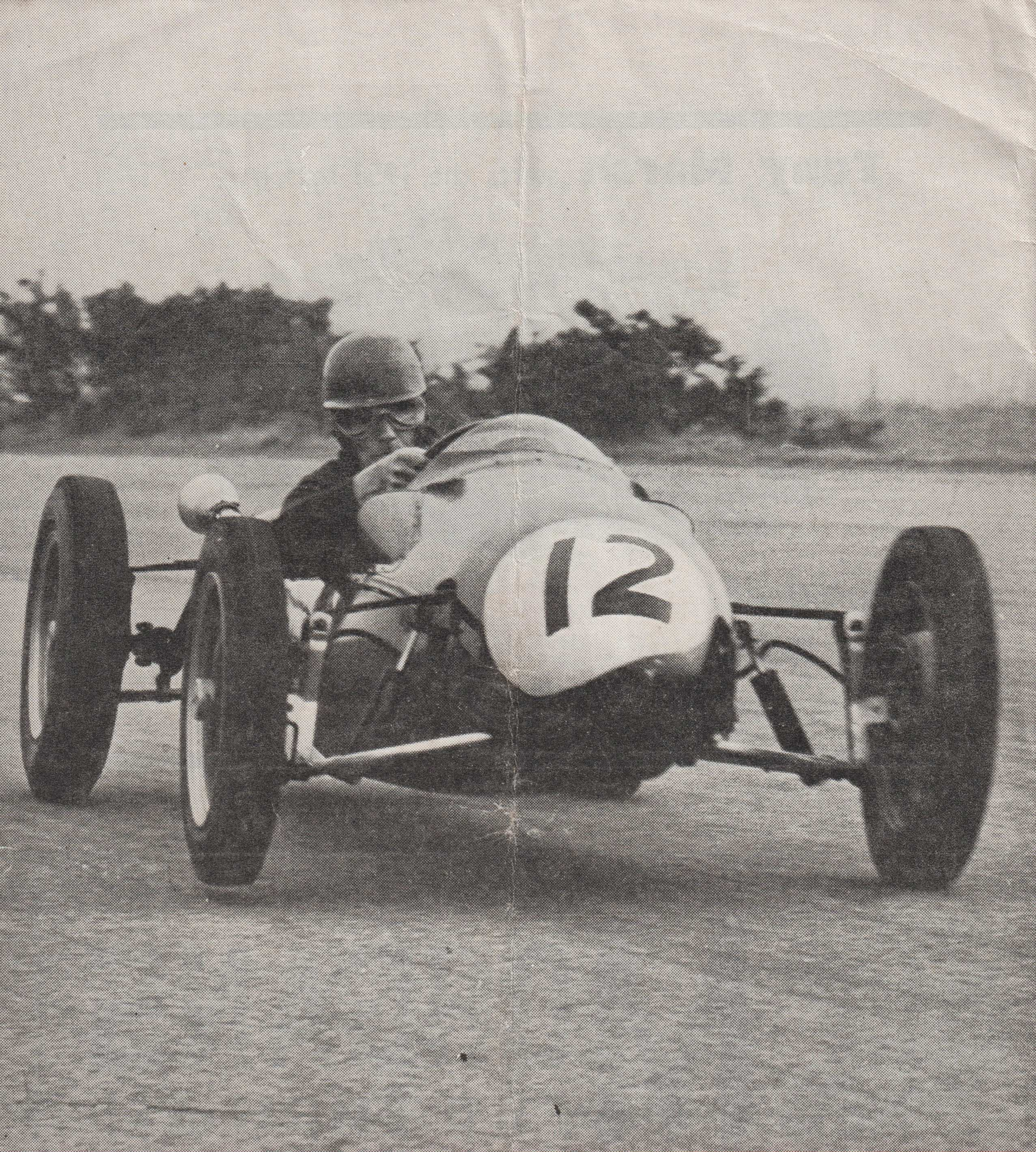
DO YOU?



MORGANS
CAP·THEM·ALL

EAST ANGLIAN ALES

BREWED FROM NORFOLK BARLEY AT NORWICH



For sporting events from road to track

WEDNESDAYS 1s

The Motor