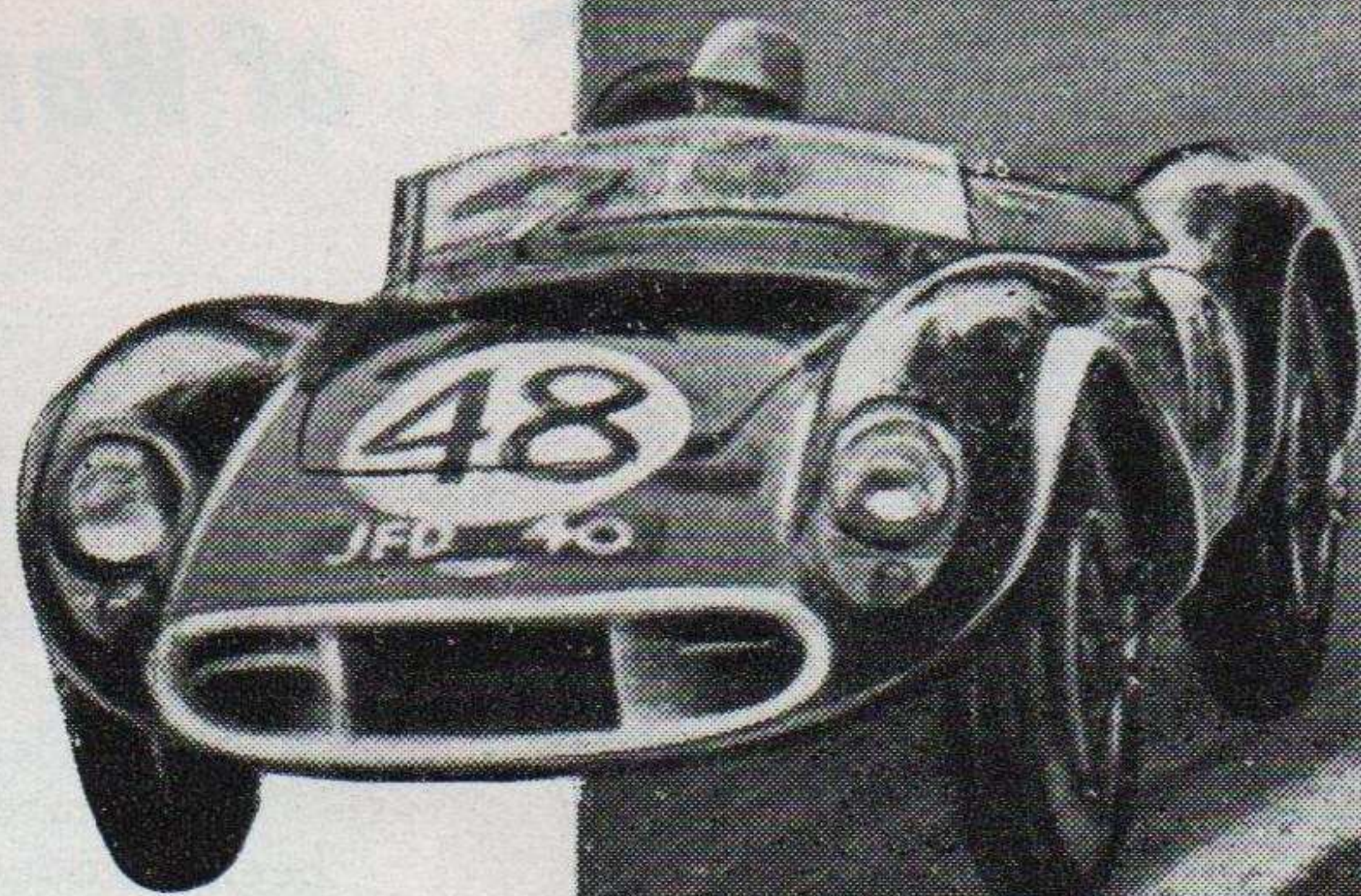


Official Programme

1/-

# CRYSTAL PALACE



London  
County  
Council

National Open Race Meeting

# Whit Monday 18 May 1959

Organised by

The British Racing & Sports Car Club Ltd

# The Motor

Wednesdays  
One  
Shilling

First For The Facts



**NOW** Every B90 Replacement

is protected by  
a Certificate  
of Warranty



Designed to safeguard the motoring public against being persuaded into accepting "Lucas type" exchange units of electrical equipment, the Certificate of Warranty has been introduced to ensure that a genuine Lucas replacement has been supplied.

If service is required during the period of warranty, the certificate can be presented to any garage, motor trader, dealer or stockist anywhere in the British Isles. They will be fully supported by Lucas Agents and Depots to give speedy service.

The Certificate is valuable—keep it with your driving licence and produce it should the need arise.

**LUCAS** **B90** EXCHANGE SERVICE **IMMEDIATE**

JOSEPH LUCAS LTD . BIRMINGHAM 19

when  
high performance  
counts . . .

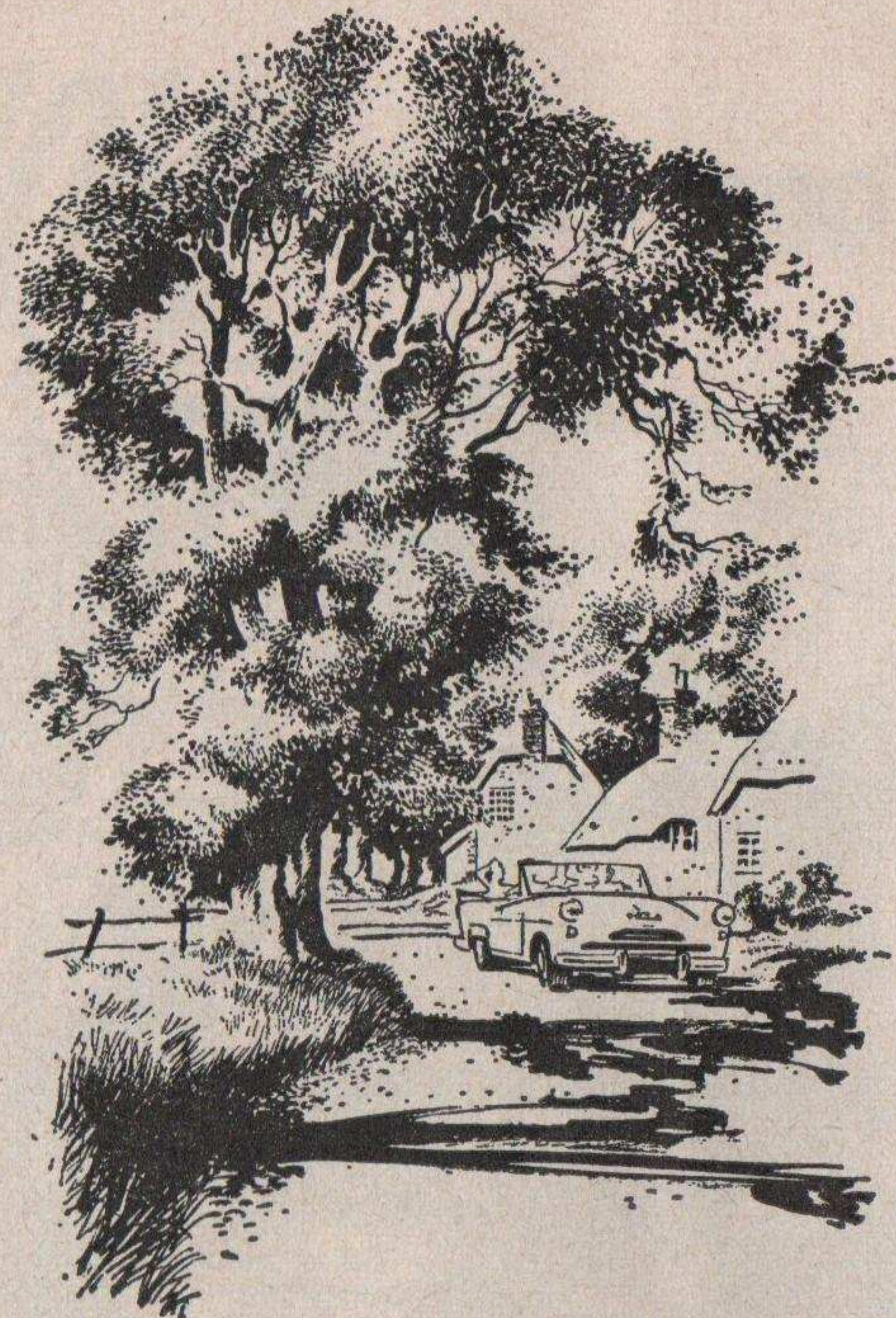


you  
can rely on

**MINTEX**

MINTEX BRAKE & CLUTCH LINERS ARE MANUFACTURED BY  
BRITISH BELTING & ASBESTOS LTD., CLECKHEATON, YORKSHIRE, AND ARE  
AVAILABLE FROM GARAGES AND DISTRIBUTORS THROUGHOUT THE COUNTRY





Long  
days . .

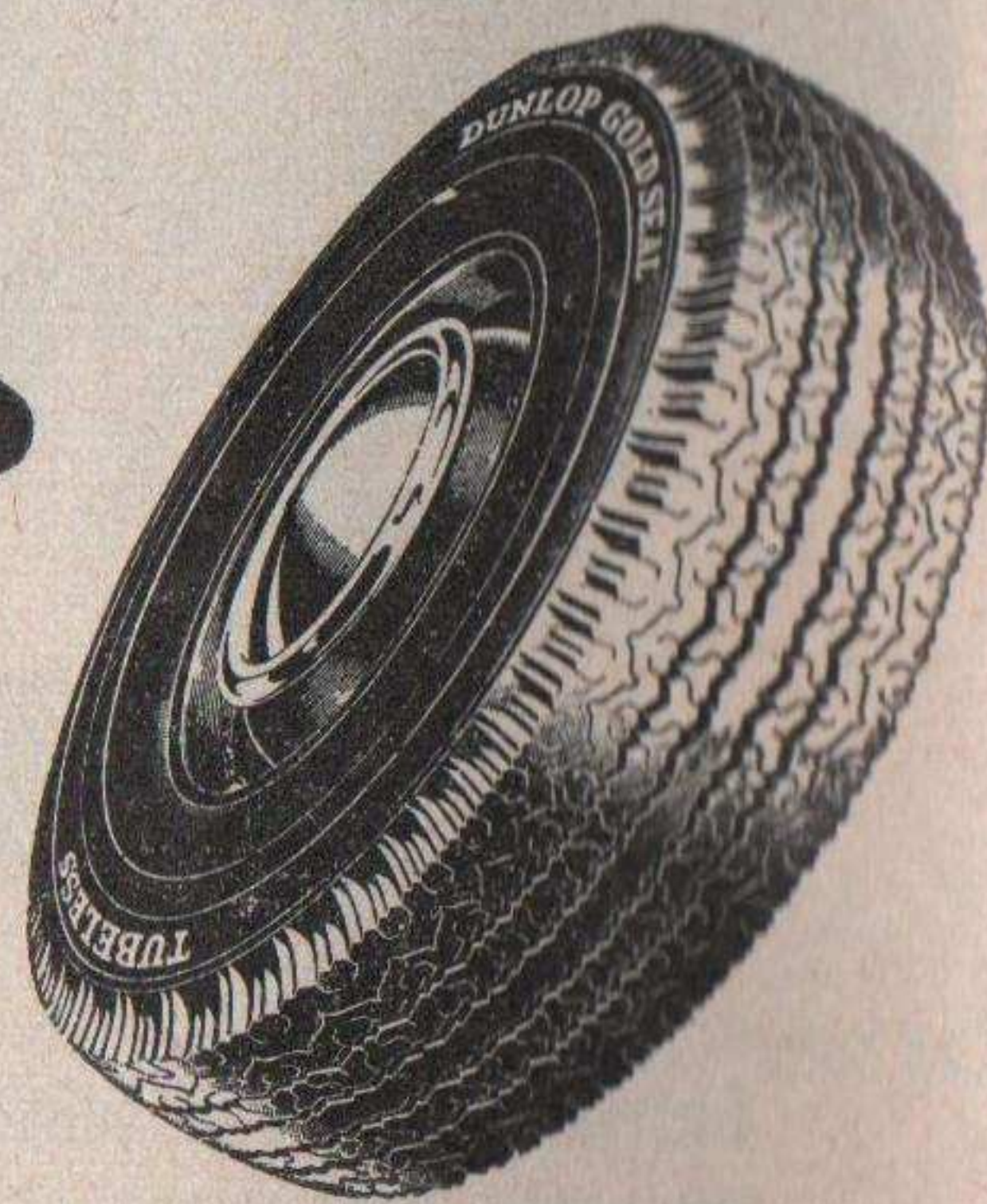
Long  
weekends . .

Long  
runs . .

... above all the assurance of long and trouble-free mileage from your Dunlop tyres — these are the joys you are looking forward to this summer. Longer days invite longer journeys. The more you travel the more you'll be glad you chose Dunlop 'Gold Seal' — the tyres which make motoring really carefree motoring.

**DUNLOP**  
**'GOLD SEAL'**

for TOP Mileage and TOP Safety!



CFH/H59/115

# NATIONAL OPEN CAR RACE MEETING

## Crystal Palace

WHIT-MONDAY, 18th MAY, 1959



PROGRAMME OF MOTOR RACING PRESENTED FOR THE

**London County Council**

by the

**British Racing & Sports Car Club Ltd.**

*The Meeting is held under the International Sporting Code of the Federation Internationale de l'Automobile (hereinafter called the F.I.A.), the General Competition Rules of the Royal Automobile Club, the Competition Rules (1959) of the British Racing and Sports Car Club Ltd., and such Supplementary Regulations and Instructions as the Club may issue for the Meeting. R.A.C. Permit No. R.584.*

### CONTENTS OF THIS PROGRAMME

	<i>Page</i>
NOTICES AND ACKNOWLEDGMENTS ... ..	4
OFFICIALS ... ..	5
PROGRAMME OF RACES AND AWARDS ... ..	6
LAP AND COURSE RECORDS ... ..	7
TODAY'S COMPETITORS ... ..	9
TODAY'S RACING ... ..	13
MAP OF CRYSTAL PALACE CIRCUIT ... ..	15
LAP SPEED TABLE ... ..	17
EVENT 1 ... ..	19
EVENT 2 ... ..	21
EVENT 3 ... ..	23
EVENT 4 ... ..	25
EVENT 5 ... ..	27
EVENT 6 ... ..	29
EVENT 7 ... ..	31
L.C.C. TRANSPORT MAP ... ..	Inside back cover



## NOTICES

**MOTOR RACING IS DANGEROUS.** Admission to the track is upon the condition that the promoters, organisers and those conducting the Meeting and all persons having any connection therewith for the purpose of the Meeting, including the owners of Crystal Palace and the drivers or riders and owners of vehicles and passengers in the vehicles taking part in the Meeting, are relieved of all liability (if any) arising out of accidents causing damage, loss or personal injury to spectators.

**SPECTATORS** are requested to disperse in a quiet and orderly manner.

**DOGS.** In the interests of safety, dogs are not admitted.

**PROGRAMME COPYRIGHT.** This programme, including the list of competitors and their racing numbers, is copyright.

**THE LONDON COUNTY COUNCIL** reserves the right to postpone, abandon, or cancel the race meeting or any part thereof.

**THE PROMOTERS** accept entries and driver nominations in good faith, but have no control over circumstances affecting non-starters. Every effort is made to adhere to the printed programme of competitors. The promoters, however, cannot accept responsibility for the failure of any driver or car to appear.

**PADDOCK TICKETS** price 20s. each, can be obtained at the entrances to the Paddock. Only a limited number are available.

---

## Acknowledgments

ALL FIRE PRECAUTIONS AND FIRE FIGHTING SERVICES BY



Breakdown Service by:

**LOWOOD GARAGE**, 4 and 12 King's Avenue, S.W.4.

**L. F. WARD LTD.**, 215 Selsdon Park Road, Addington.

**S. G. SMITH (MOTORS) LTD.**, 13-17 East Dulwich Road, S.E.22.

First Aid Services by:

**THE ST. JOHN AMBULANCE BRIGADE.**

Triumph Herald Course Car:

**GORDON & GLYNN**, 73 and 79 Cadogan Lane, Sloane Street, S.W.1.

Caravan:

**J. MORGAN**, 33 Harestone Hill, Caterham, Surrey.

## Officials

### STEWARDS

For the R.A.C.

J. H. Kemsley

For the B.R.S.C.C.

F. H. Bacon

J. A. Ellison

I. H. Smith

### JUDGES

G. H. Symonds

L. Lewis-Evans

### SECRETARY OF THE MEETING

N. Syrett

### CLERK OF THE COURSE

R. M. Carter

### ASSISTANT CLERK OF THE COURSE

R. E. Reynolds

### RACE CONTROL

E. V. Harcourt

P. S. McNally

Miss J. Curtis

B. H. Crow

Miss P. Burt

### TIMEKEEPERS

Major-General A. H. Loughborough

C. Audrey

F. A. Lowe

### RACE RECORDERS

Mrs. C. Audrey

E. B. Colman

P. W. Browning

### SCRUTINEERS

S. R. Proctor

G. T. R. Meekings

L. A. Cushman

### ASSISTANT SCRUTINEERS

A. C. H. Smith

Major H. A. Powell

### COMMENTATORS

J. V. Bolster

A. E. Marsh

### CHIEF OBSERVER

R. Sinclair

### CHIEF MARSHAL

S. G. Ridgeway

### CHIEF COURSE MARSHAL

G. Ridgewell

### CHIEF FLAG MARSHAL

N. Higgins

### CHIEF PADDOCK MARSHAL

H. W. Lamkin

### STARTERS

C. Greville Smith

R. Wilson

### CHIEF START LINE MARSHAL

B. L. O'Hara

### MEDICAL OFFICERS

Dr. C. Outred Dr. M. Blackman

Dr. P. S. C. Chapman Dr. J. C. Murphy

### MEDICAL SERVICES

St. John Ambulance Brigade

### MARSHALS

Members of the B.R.S.C.C.

### PRESS OFFICER

D. R. Allen (L.C.C. Parks Dept.)

---

## London Council Council Parks Department

L. A. HUDDART, F.I.L.A., F.Inst.P.A. ... *Chief Officer*

C. J. LAYTON ... .. *Deputy Chief Officer*

F. S. BECKETT ... .. *Principal Assistant*



# Programme of Races

1. **THE LONDON TROPHY RACE** for Formula 2 racing cars (up to 1500 c.c. unsupercharged).
2. **THE ANERLEY TROPHY RACE** for sports cars with an engine capacity not exceeding 1500 c.c. unsupercharged.
3. **THE REDEX CHALLENGE TROPHY RACE** for single seater racing cars up to 500 c.c. unsupercharged.
4. **THE NORBURY TROPHY RACE** for sports cars with an engine capacity exceeding 1500 c.c. unsupercharged.
5. **TOURING CAR RACE**

- 
- Event 1 1.35 p.m. (10 laps)—Heat 1 of the Anerley Trophy Race.  
 „ 2 2.00 p.m. (10 laps)—Touring Car Race.  
 „ 3 2.25 p.m. (10 laps)—The Redex Challenge Trophy Race.  
 „ 4 2.50 p.m. (10 laps)—Heat 2 of the Anerley Trophy Race.  
 „ 5 3.25 p.m. (36 laps)—The London Trophy Race.  
 „ 6 4.35 p.m. (15 laps)—The Norbury Trophy Race.  
 „ 7 5.05 p.m. (15 laps)—The final of the Anerley Trophy Race.
- 

## Awards

Race 1	...	...	1st £100	2nd £50	3rd £30	4th £20	5th £10	
Race 2	...	...	1st £50	2nd £25	3rd £10	4th £5	5th £3	
			1st in up to 1100 c.c. class £15					
Heats	...	...	1st £30	2nd £20	3rd £10			
Race 3	...	...	1st £50	2nd £25	3rd £20	4th £15	5th £7	6th £3
Race 4	...	...	1st £50	2nd £30	3rd £15	4th £10	5th £5	
Race 5	...	...	1st £30	2nd £25	3rd £15			
			1st in up to 1300 c.c. class £15					

In addition, the following Trophies will be awarded, to be held for one year:

- Race 1—The London Trophy.
- Race 2—The Anerley Trophy.
- Race 3—The Redex Challenge Trophy.
- Race 4—The Norbury Trophy.

# Crystal Palace Road Racing Circuit— Lap and Course Records

up to and including meeting on 5th July, 1958

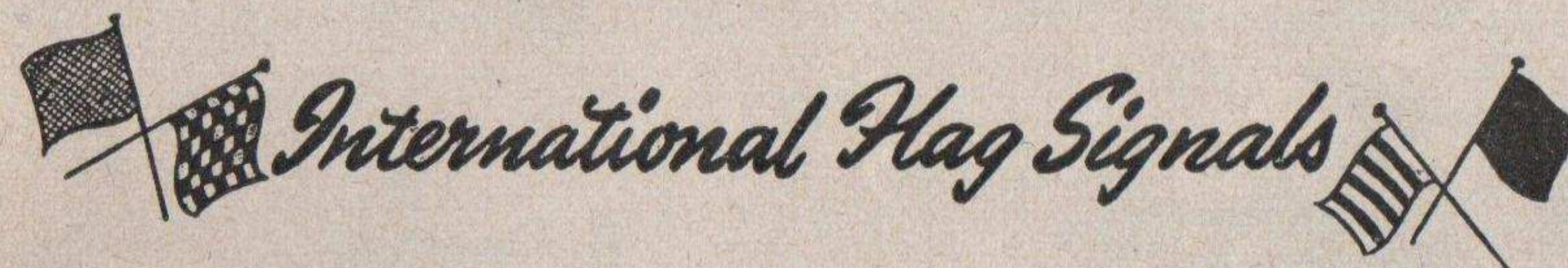
## 1. LAP RECORDS

Class	Driver	Car	Speed (m.p.h.)	Date
Formulae 1 and 2 ...	T. Bridger	Cooper-Climax	82.30	26.5.58
	G. Wicken	Cooper-Climax	82.30	26.5.58
Formula 3 ... ..	J. Russell	Cooper-Norton	78.43	5.7.58
Sports Cars (Unlimited) ...	I. Bueb	Lister-Jaguar	79.43	5.7.58
Sports Cars (Up to 1500 c.c.) .	J. K. Hall	Lotus-Climax	77.70	5.8.57
Saloon Cars ... ..	T. E. B. Sopwith	Jaguar	67.80	5.7.58

7984

## 2. RACE RECORDS

Formulae 1 and 2 ...	I. Burgess	Cooper-Climax	80.34	26.5.58
Formula 3 ... ..	S. Lewis-Evans	Cooper	75.49	10.6.57
Sports Cars (Unlimited) ...	I. Bueb	Lister-Jaguar	76.98	5.7.58
Sports Cars (Up to 1500 c.c.) ...	A. Stacey	Lotus-Climax	76.20	26.5.58
Saloon Cars ... ..	T. E. B. Sopwith	Jaguar	66.88	5.7.58



**Red:** Signal for complete and immediate stop.

**Yellow (Waved):** Great danger, be prepared to stop.

**Yellow (Steady):** Take care, danger.

**Yellow with Vertical Red Stripes:** Take care, oil has been spilled somewhere on the road.

**Blue (Waved):** Another competitor is trying to overtake you.

**Blue (Steady):** Another competitor is following you very closely.

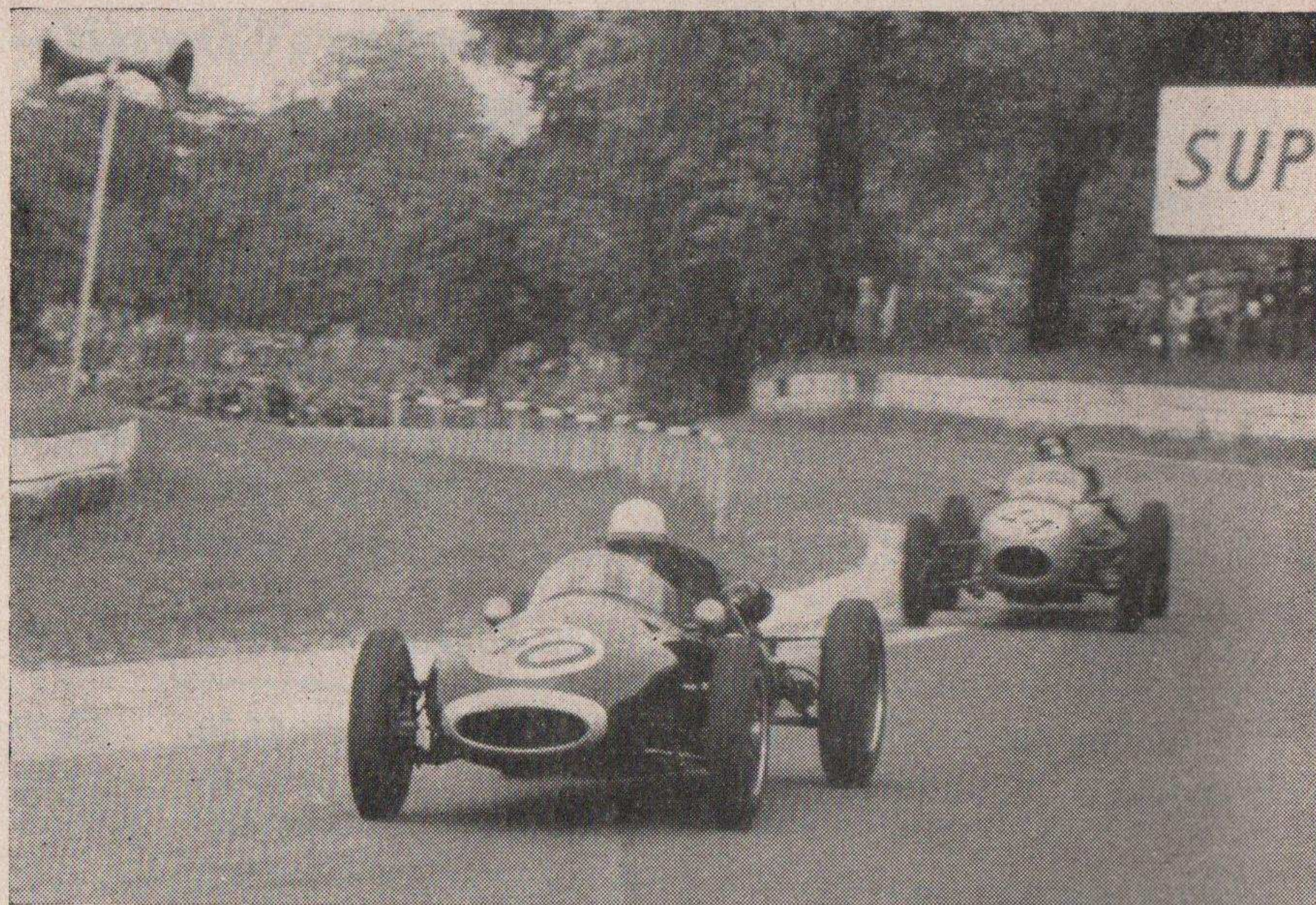
**White:** An ambulance or service car is on the circuit.

**Black (with Competitor's Number):** Signal for the competitor to stop on the next lap.

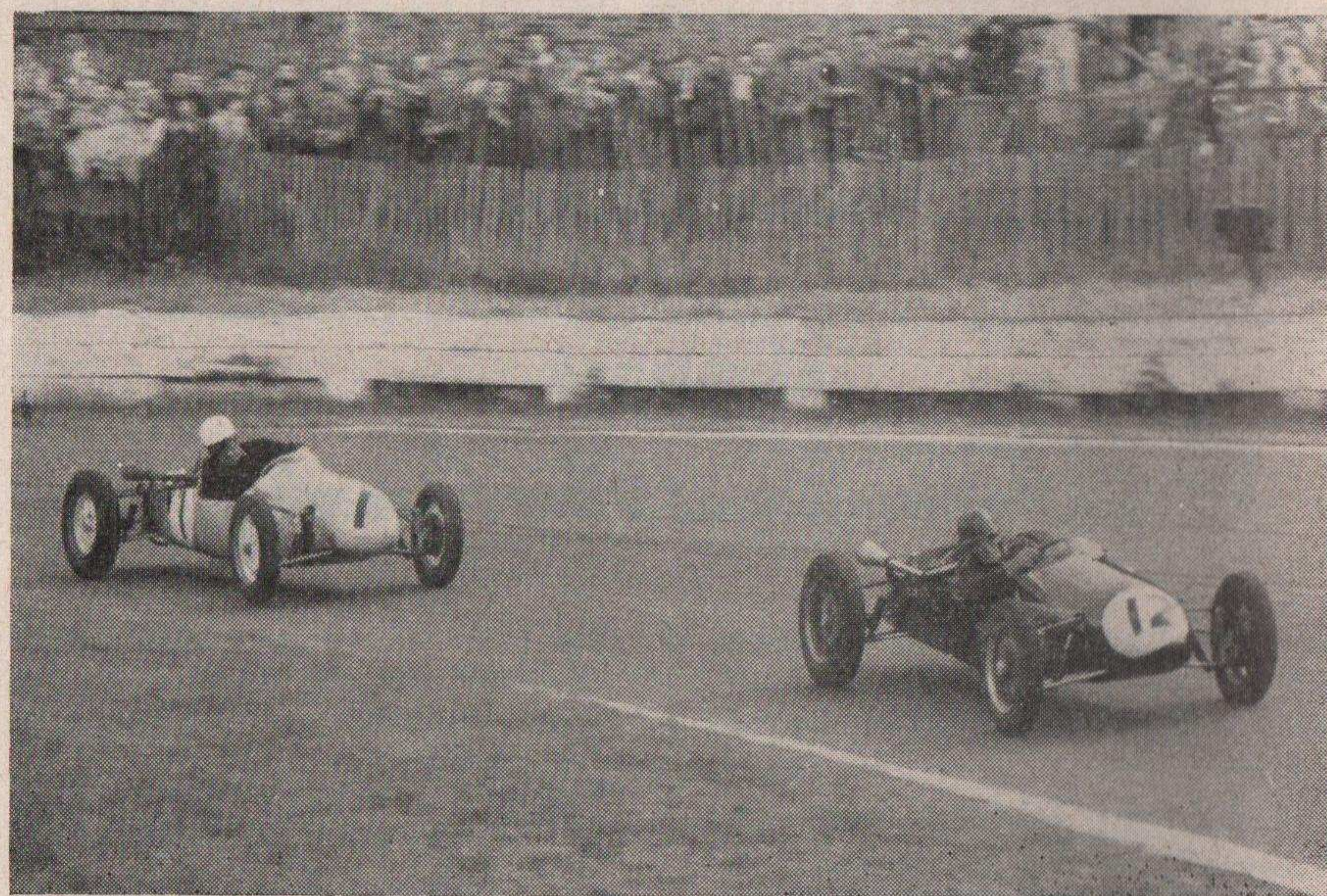
**Black and White Chequered:** Signal for the winner and end of the race.

The Union Jack will be used for starting the races.





Formula 2 star, New Zealander Bruce Maclaren - who last week finished fifth at Monaco - is chased through Maxim Rise during the Formula 2 Race held at last year's Whitsun race meeting.  
"Motor Racing" Photograph



Formula III exponents Don Parker and Jim Russell. Russell has not entered a 500 c.c. car this year, but he is bound to put up a fine performance in his Formula 2 Cooper-Climax.  
"Motor Racing" Photograph

# Today's Competitors

## 500 c.c. RACING CARS

No.	Driver	Car	Entrant
1	M. C. Brackenbury	Cooper-Norton	M.P.H.W. Sales Ltd.
2	J. Denley	Cooper-Norton	J. Denley
3	E. G. Willmott	Cooper-Norton	E. G. Willmott
4	M. H. Clare	Cooper-Norton	Motor Racing Enterprises
5	S. Foreman	Cooper-Norton	S. Foreman
6	R. Bayton	Kieft-Norton	R. Bayton
7	A. J. C. Newton	Cooper-Norton	A. J. C. Newton
8	W. J. Shaw	Cooper-Norton	W. J. Shaw
9	A. D. Plumstead	Cooper-Norton	A. D. Plumstead
10	V. A. Hassall	Cooper-Norton	V. A. Hassall
11	P. A. Desoutter	Cooper-Norton	P. A. Desoutter
12	D. Parker	Cooper-Norton	R. R. Jackson
14	P. Ellis	Cooper-Norton	P. Ellis
15	M. G. Thomas	Cooper-Norton	M. G. Thomas
16	P. J. Mutton	Cooper-Norton	P. J. Mutton
17	P. A. Luke	Cooper-Norton	P. A. Luke
18	T. Bridger	Cooper-Norton	S. S. Lancefield
19	J. Pitcher	Cooper-Petty-Norton	Lea's Garages Ltd.
20	R. F. Mayne	Kieft-Norton	R. F. Mayne
21	C. W. A. Heyward	C.H.S.-Norton	Ecurie Heyward
22	M. R. Lovell	Grenfell-Norton	M. R. Lovell
23	M. Rainey	Cooper-Norton	M. Rainey (Reserve)
24	D. J. Watson	Etterne-Norton	G. A. Henrotte (Reserve)

## FORMULA 2 CARS

25	G. Wicken	Cooper-Borgward	British Racing Partnership
26	I. Bueb	Cooper-Borgward	British Racing Partnership
27	R. Salvadori	Cooper-Climax	C. T. Atkins
28	J. Russell	Cooper-Climax	J. Russell
29	W. F. Moss	Cooper-Climax	United Racing Stable
30	I. E. Raby	Cooper-Climax	Sewell & King (Chelmsford)
31	T. Taylor	Beart-Cooper-Climax	Ace Garage, Rotherham
32	C. Bristow	Hume-Cooper-Climax	T. G. Payne
33	A. Stacey	Lotus-Climax	Team Lotus
34	I. Ireland	Lotus-Climax	Team Lotus
35	D. Taylor	Lotus-Climax	D. Taylor
36	B. Halford	Lotus-Climax	J. Fisher
37	D. Piper	Lotus-Climax	Dorchester Service Station
38	J. Lewis	Cooper-Climax	H. & L. Motors Ltd.
39	K. Y. Twisk	Cooper-Climax	Tulip Stable (Reserve)
98	P. H. Ashdown	Smith-Climax	G. G. Smith (Reserve)

## SPORTS CARS UP TO 1500 c.c.

40	R. Salvadori	Cooper-Climax	J. Coombs
41	Count S. Cavaroff	Willment-Climax	Count S. Ouvaroff
42	I. Ireland	Lotus-Climax	Team Lotus
43	A. Stacey	Lotus-Climax	Team Lotus
45	D. Randall	Lotus-Climax	D. Randall
47	A. B. Rees	Lotus-Climax	A. B. Rees
48	P. Riley	Lotus-Climax	P. Riley
49	R. N. Prior	Lotus-Climax	R. N. Prior
50	A. R. Aubrey	Lotus-Climax	A. R. Aubrey
51	M. G. Wills	Lotus-Climax	M. G. Wills
52	G. K. Lambert	Lotus-Climax	G. K. Lambert
53	C. Bristow	Lotus-Climax	A. F. Cook
54	R. Dutt	Lotus-Climax	Motor Racing Enterprises
55	E. L. Hine	Lotus-Climax	John Hine Cars Ltd.
56	T. Dickson	Elva-Climax	Elva Racing Team
57	J. Brown	Elva-Climax	Elva Racing Team
58	R. Ham	Elva-Climax	R. Ham
59	P. H. Ashdown	Lola-Climax	Lola Cars
60	M. J. C. Taylor	Lola-Climax	Taylor & Crawley Service Ltd.
62	A. V. Hegbourne	Tojeiro-Climax	A. V. Hegbourne
63	I. E. Raby	Cooper-Climax	Sewell & King (Chelmsford)



Get on to

**AVON**

**H**igher  
**M**ileage



LOOK FOR THE  
**HM**

—thousands of motorists know it is the symbol of Higher Mileage—which brings motoring costs down and saves your pocket! Regular or AIRSEAL (needs no tube) in RIBBED or CENTRE TRACTION pattern.

**SPORTS CARS OVER 1500 c.c.**

No.	Driver	Car	Entrant
64	J. Ewer ...	Lister-Chevrolet ...	J. Ewer
65	I. Bueb ...	Lister-Jaguar ...	Brian Lister (Lt. Eng.) Ltd.
66	B. Halford ...	Lister-Jaguar ...	Brian Lister (Lt. Eng.) Ltd.
67	W. F. Moss ...	Lister-Jaguar ...	W. F. Moss
68	J. Sieff ...	Lister-Jaguar ...	J. Sieff
70	G. Lee ...	Jaguar XK120C ...	G. Lee
71	R. M. Milne ...	H.W.M.-Jaguar ...	R. M. Milne (Reserve)
72	P. Mould ...	Lister-Jaguar ...	P. Mould
73	M. E. S. Bond ...	Aston Martin DB3S ...	Ecurie Chiltern
75	G. Hill ...	Lotus-Climax ...	Team Lotus
76	R. Salvadori ...	Cooper-Maserati ...	J. Coombs
77	J. Russell ...	Cooper-Climax ...	J. Russell
78	C. Bristow ...	Cooper-Climax ...	Luxury Cars Garages
79	D. Piper ...	Lotus-Climax ...	Dorchester Service Station
80	A. Stacey ...	Lotus-Climax ...	Team Lotus

**TOURING CARS**

81	W. B. Blydenstein ...	Borgward-Isabella ...	W. B. Blydenstein
82	G. H. Grace ...	Riley 1.5 ...	G. H. Grace
83	L. Leston ...	Riley 1.5 ...	L. Leston
84	C. Power ...	Riley 1.5 ...	L. Leston
85	A. S. Hutcheson ...	Riley 1.5 ...	A. S. Hutcheson
86	P. M. Jopp ...	Wolseley 1500 ...	P. M. Jopp
87	G. Wulf ...	Borgward-Isabella ...	G. Wulf
89	J. M. Young ...	Ford Prefect ...	J. M. Young
90	G. Hill ...	Austin A35 ...	Team Speedwell
91	L. A. Adams ...	Austin A35 ...	Team Speedwell
92	G. C. Shepherd ...	Austin A40 ...	G. C. Shepherd
93	F. W. Marriott ...	Morris 1000 ...	F. W. Marriott
94	R. D. Jennings ...	Renault Dauphine ...	Rudd Racing Ltd.
95	G. H. Williamson ...	Austin A40 ...	Alexander Engineering Ltd.
96	H. R. Vincent ...	Wolseley 1500 ...	H. R. Vincent (Reserve)
97	D. Stevenson ...	Austin A35 ...	D. Stevenson (Reserve)

ANOTHER LEAF OUT OF THE JARVIS BOOK . . .

Go to



**Jarvis**  
OF WIMBLEDON

**For MORRIS • M.G. • RILEY  
WOLSELEY • AUSTIN**

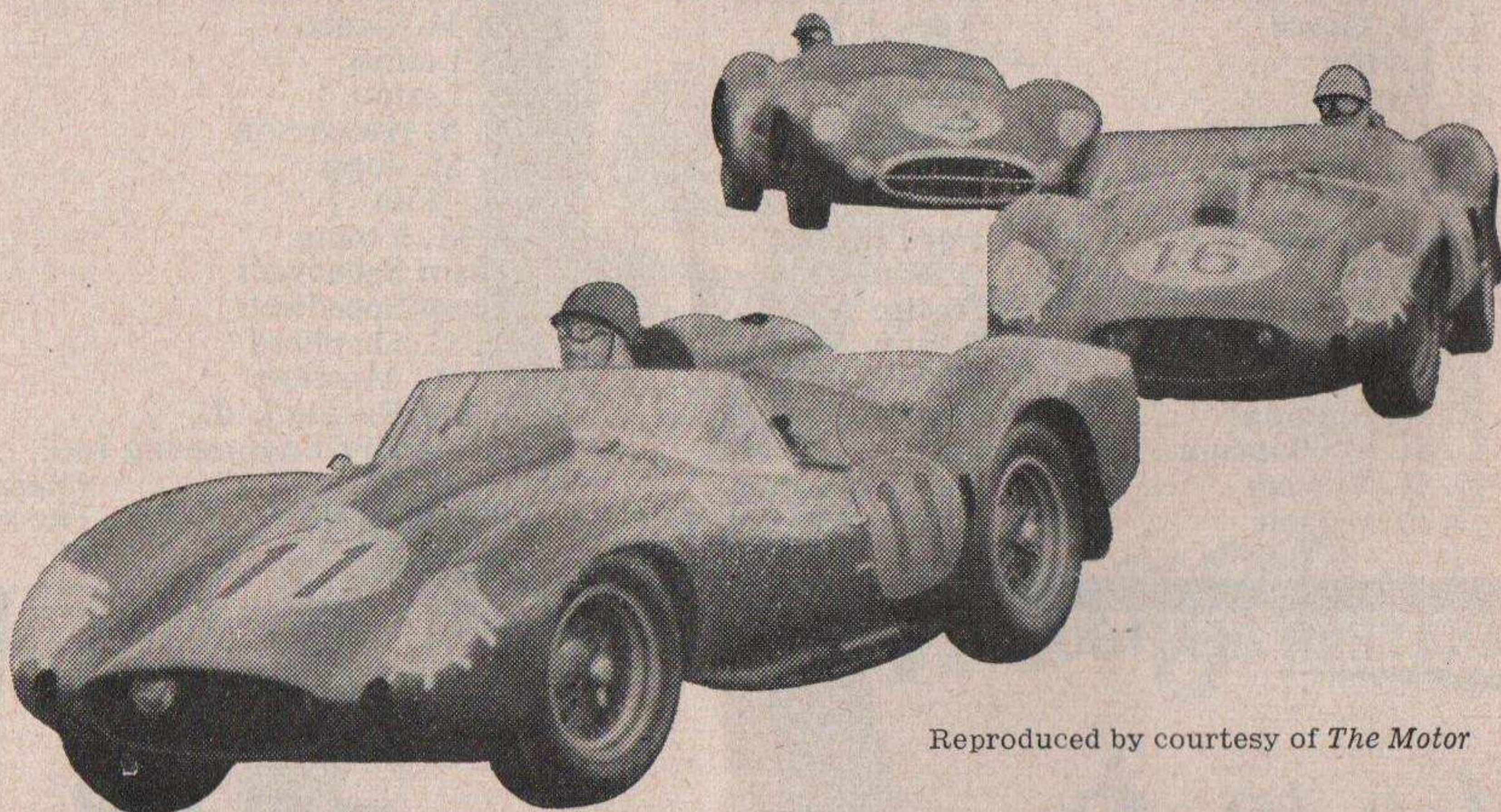
Sales and Service

MORRIS HOUSE  
MORDEN ROAD, S.W.19  
Liberty 8221-8

57 HILL ROAD  
WIMBLEDON, S.W.19  
Wimbledon 2526



1956, 1957  
AND NOW  
THE 1958 INTERNATIONAL SPORTS CAR  
CHAMPIONSHIP  
WON WITH SHELL X-100 MOTOR OIL



Reproduced by courtesy of *The Motor*

ENZO FERRARI PRAISES HIGH QUALITY OF SHELL X-100

For the third year in succession the International Sports Car Championship has been won by Comm. Enzo Ferrari. "A great part of our success," says Comm. Ferrari, "is due to Shell X-100 Motor Oil. Shell X-100 possesses lubrication characteristics of such high quality that we have been able to abandon vegetable base oils." Profit from Ferrari's experience: use Shell X-100 in your own car. Ask for it—and for Super Shell or Shell with I.C.A.—at your local Shell Service Station.

YOUR ENGINE'S BEST FRIEND



**Today's Racing**

IT gives me great pleasure on behalf of the British Racing and Sports Car Club, as the organisers of today's racing for the London County Council, to welcome you to Crystal Palace.

The Club has arranged what is felt will be a most interesting day's racing with plenty of variety and some of the best known names in British motor racing. The main event of the day is, of course, the 36-lap Formula 2 (racing cars up to 1500 c.c. unsupercharged) race for the London Trophy. These cars are very closely matched and it is extremely difficult to select a likely winner, but I would recommend you to watch Roy Salvadori in Tommy Atkins's Cooper-Climax, Ivor Bueb and George Wicken in the German Borgward-engined Coopers entered by the British Racing Partnership, Jim Russell, winner of this year's British Empire Trophy, and Lotus drivers Bruce Halford, Innes Ireland and Alan Stacey.

In the Norbury Trophy race for sports cars over 1500 c.c., there should be a great battle between the new Cooper-Monacos and the 3.8-litre Jaguar-engined Listers. For Coopers, Roy Salvadori and Jim Russell are again appearing and the Lister attack will be led by two works-entered cars driven by Ivor Bueb and Bruce Halford, with private entries in the hands of Bill Moss and Jonathan Sieff. Opposition from yet another quarter will come from the Team Lotus cars driven by Graham Hill and Alan Stacey. These are the very latest Lotus XV models and Hill's car will be powered by the 2½-litre Coventry-Climax Grand Prix engine.

The Anerley Trophy for sports cars up to 1500 c.c. will be run in two heats and a final and will provide Londoners with the first chance of seeing the fabulous Byfleet-built Lolas on their "home circuit". One of these cars will be driven by Peter Ashdown, current leader of the Sports Car Championship, and he will be supported by a private entry in the hands of Michael Taylor. Roy Salvadori will be appearing yet again in this event driving a 1½-litre Climax-engined Cooper-Monaco, entered by John Coombs, and works Lotuses will be in the hands of Innes Ireland and Alan Stacey. The Elva Racing Team have entered two cars for this event, to be driven by Scotsman Tommy Dickson and John Brown.

In the 500 c.c. race we have old favourites Don Parker and Tommy Bridger driving Cooper-Nortons tuned by R. R. Jackson and Steve Lancefield respectively. In addition to these two drivers, most of the leading 500 c.c. stars will be competing, including John Pitcher, Peter Luke and Peter Ellis.

Completing the programme will be a 10-lap event for modified family saloon cars run in two classes, up to 1300 c.c. and 1301 c.c. to 1600 c.c. In this event, cars to watch are Les Leston's ultra-rapid Riley 1.5 and the incredible Austin A40 to be driven by Doc Shepherd. Another interesting entry in this race is the Gordini-modified Renault Dauphine driven by Bob Jennings.

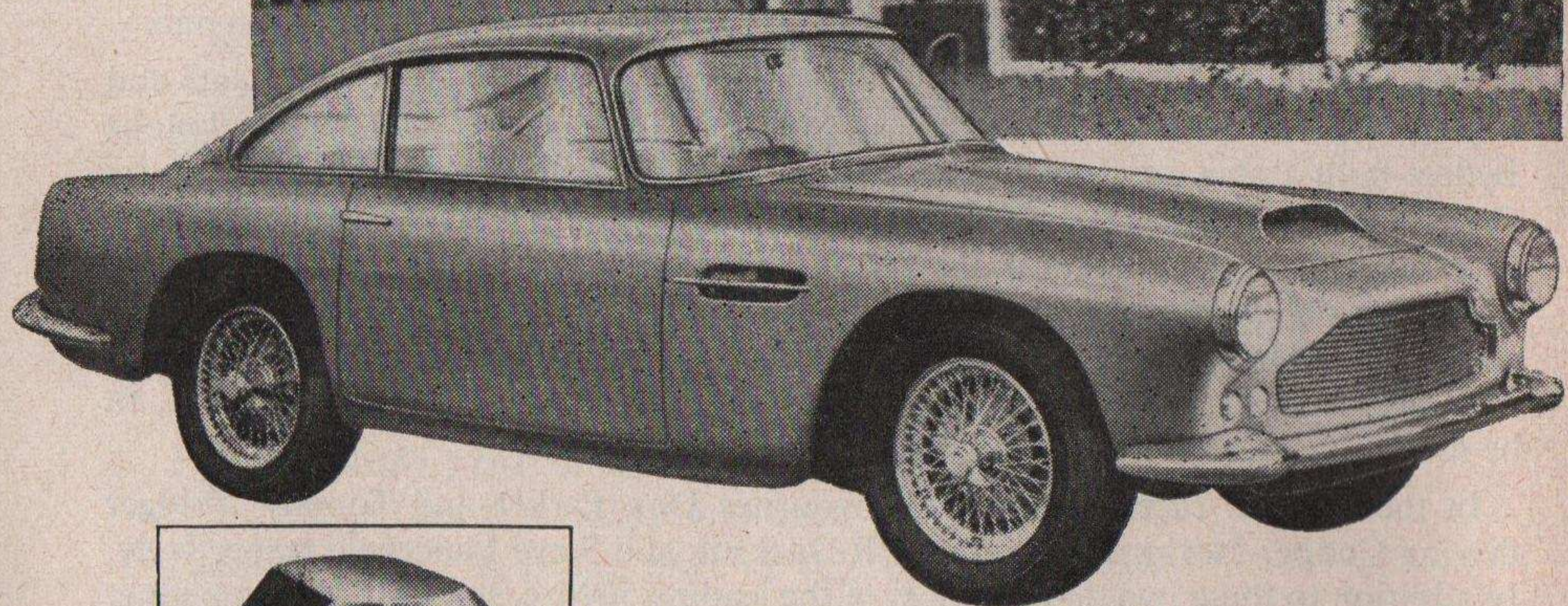
In closing, I should like to wish you all, be you driving, marshalling or watching, a good day's sport and also to express the thanks of my Club to the London County Council for its kind help and co-operation.

N. SYRETT,  
Secretary, B.R. & S.C.C.



# Hepolite for high performance thoroughbreds

Photograph by  
Telegraph & Argus,  
Bradford.

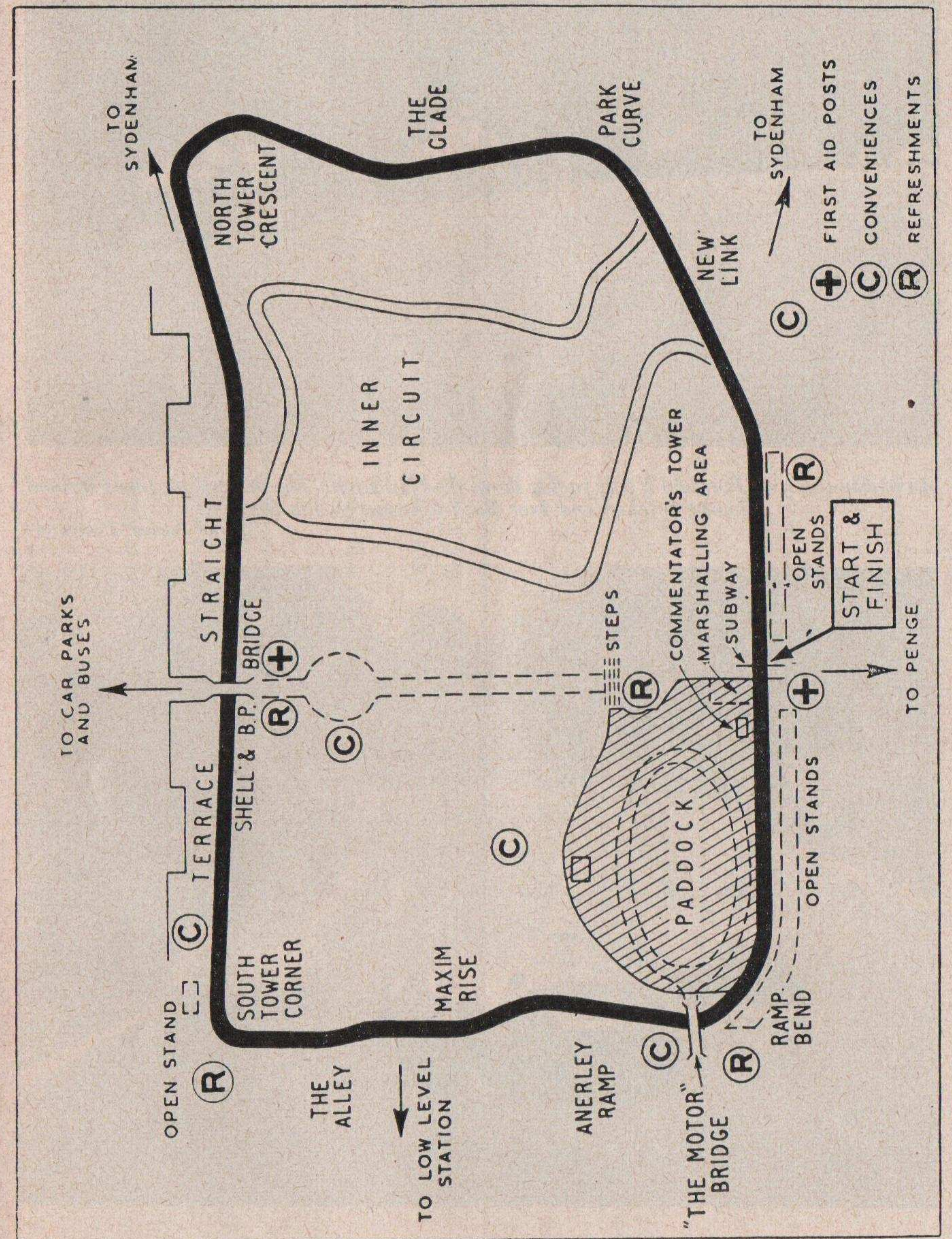


The David Brown Aston-Martin DB.4 is a thoroughbred of the car world, turning the heads of all who see its elegant design and witness its phenomenal performance. We feel justly proud that Hepolite products play an important part in setting the DB.4 at the head of the field. For many years we have supplied components to this famous stable, gaining vast experience in the design and manufacture of pistons, gudgeon pins, and cylinder liners of the highest quality. The same high standard of craftsmanship and precision engineering goes into all our products for both the manufacturing and replacement trades.

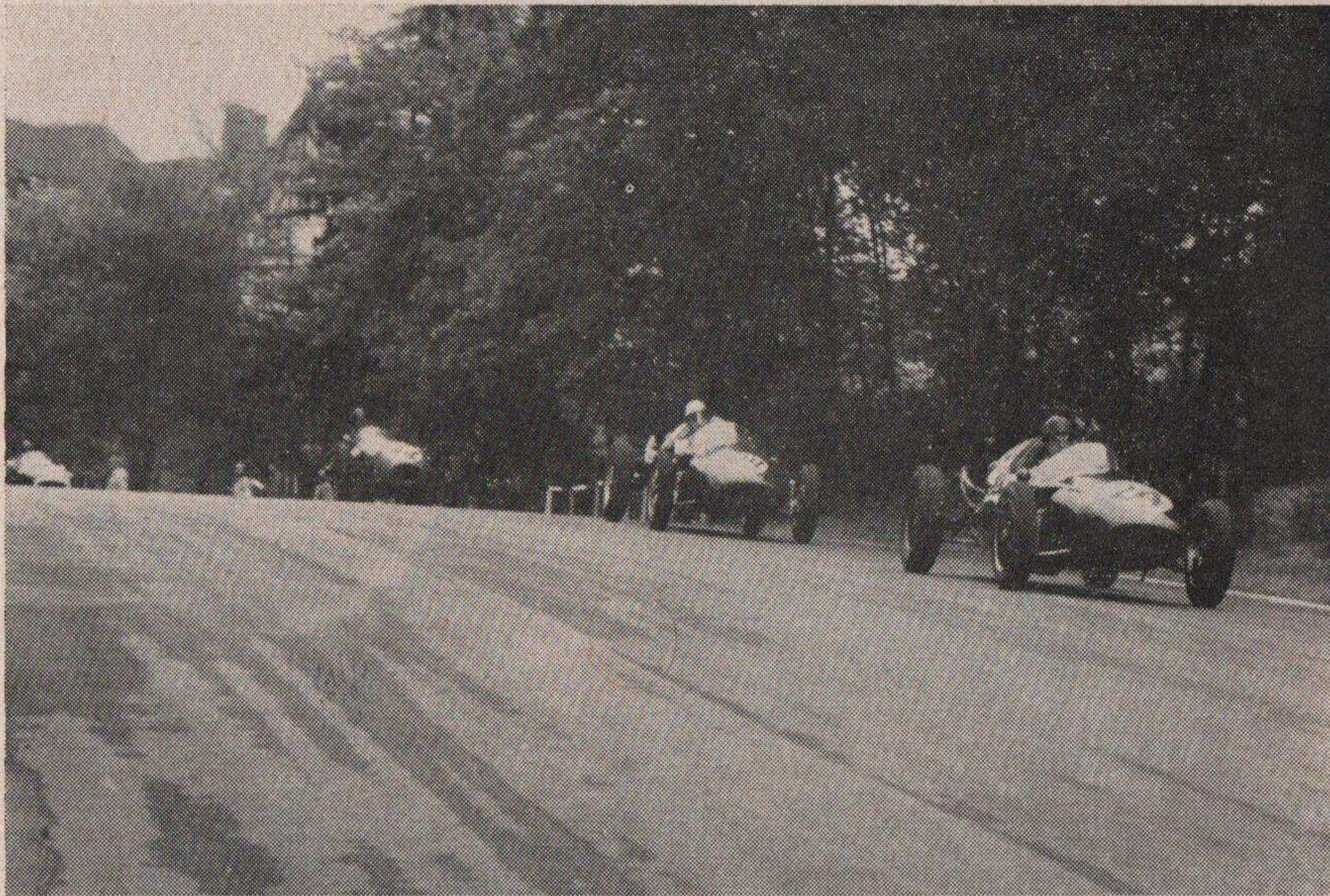


HEPWORTH & GRANDAGE LTD., ST. JOHN'S WORKS, BRADFORD 4  
Established for over 50 years:— There is no substitute for experience

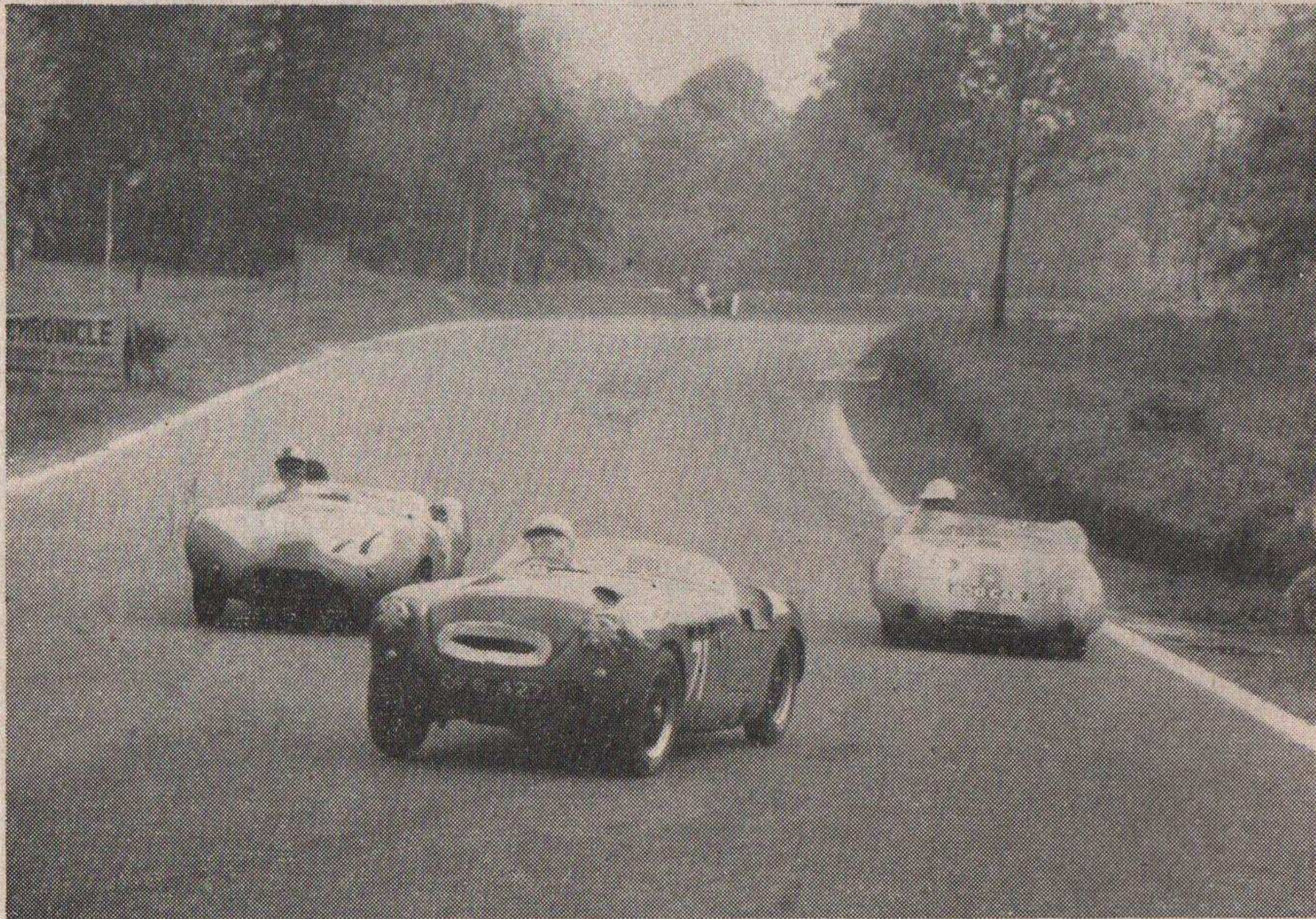
# Map of the Crystal Palace Circuit







An unusual shot of Formula 2 cars racing down the New Link. The drivers are Innes Ireland, George Wicken and Ivor Bueb followed by Ian Burgess.  
 "Motor Racing" Photograph



1500 c.c. sports car races are always closely fought, as this picture shows, taken during last year's meeting. The cars are just going into North Tower Crescent.  
 "Motor Racing" Photograph

## LAP SPEED TABLE

1 lap = 1.39 miles

LAP TIME	SPEED	LAP TIME	SPEED	LAP TIME	SPEED	LAP TIME	SPEED
M. S.	M.P.H.	M. S.	M.P.H.	M. S.	M.P.H.	M. S.	M.P.H.
0 59	84.81	1 7	74.69	1 15	66.72	1 23	60.29
.2	84.53	.2	74.46	.2	66.54	.2	60.14
.4	84.24	.4	74.24	.4	66.37	.4	60.00
.6	83.96	.6	74.02	.6	66.19	.6	59.86
.8	83.68	.8	73.81	.8	66.02	.8	59.71
1 0	83.40	1 8	73.59	1 16	65.84	1 24	59.57
.2	83.12	.2	73.37	.2	65.67	.2	59.43
.4	82.85	.4	73.16	.4	65.50	.4	59.29
.6	82.57	.6	72.94	.6	65.33	.6	59.15
.8	82.30	.8	72.73	.8	65.16	.8	59.01
1 1	82.03	1 9	72.52	1 17	64.99	1 25	58.87
.2	81.76	.2	72.31	.2	64.82	.2	58.73
.4	81.50	.4	72.10	.4	64.65	.4	58.59
.6	81.23	.6	71.90	.6	64.48	.6	58.46
.8	80.97	.8	71.69	.8	64.32	.8	58.32
1 2	80.71	1 10	71.49	1 18	64.15	1 26	58.19
.2	80.45	.2	71.28	.2	63.99	.2	58.05
.4	80.19	.4	71.08	.4	63.83	.4	57.92
.6	79.94	.6	70.88	.6	63.66	.6	57.78
.8	79.68	.8	70.68	.8	63.50	.8	57.65
1 3	79.43	1 11	70.48	1 19	63.34	1 27	57.51
.2	79.18	.2	70.28	.2	63.18	.2	57.39
.4	78.93	.4	70.08	.4	63.02	.4	57.25
.6	78.68	.6	69.89	.6	62.86	.6	57.12
.8	78.43	.8	69.69	.8	62.71	.8	56.99
1 4	78.19	1 12	69.50	1 20	62.55	1 28	56.86
.2	77.94	.2	69.31	.2	62.39	.2	56.73
.4	77.70	.4	69.12	.4	62.24	.4	56.61
.6	77.46	.6	68.93	.6	62.08	.6	56.48
.8	77.22	.8	68.74	.8	61.93	.8	56.35
1 5	76.98	1 13	68.55	1 21	61.78	1 29	56.22
.2	76.75	.2	68.36	.2	61.63	.2	56.10
.4	76.51	.4	68.17	.4	61.47	.4	55.97
.6	76.28	.6	67.99	.6	61.32	.6	55.85
.8	76.08	.8	67.80	.8	61.17	.8	55.72
1 6	75.82	1 14	67.62	1 22	61.02	1 30	55.60
.2	75.59	.2	67.44	.2	60.88	.2	55.48
.4	75.36	.4	67.26	.4	60.73	.4	55.35
.6	75.14	.6	67.08	.6	60.58	.6	55.23
.8	74.91	.8	66.90	.8	60.43	.8	55.11



# Lap Chart EVENT ONE

LAP	1	2	3	4	5	6	7	8	9	10
1st										42
2nd										40
3rd										56
4th										60
5th										46
6th										54
7th										
8th										
9th										
10th										
11th										
12th										
13th										
14th										

## EVERY CRYSTAL PALACE MEETING is protected from FIRE with

Make sure that you too carry a "Pyrene" Fire Extinguisher on your car. Get one now from your local dealer or garage. If you would like details first, please write to Dept. C.P.R.P.



THE PYRENE COMPANY LTD. 9 Grosvenor Gardens, S.W.1 (Tel. VIC. 3401)

START 1.35 p.m. 10 LAPS

## EVENT ONE The Anerley Trophy Race HEAT ONE

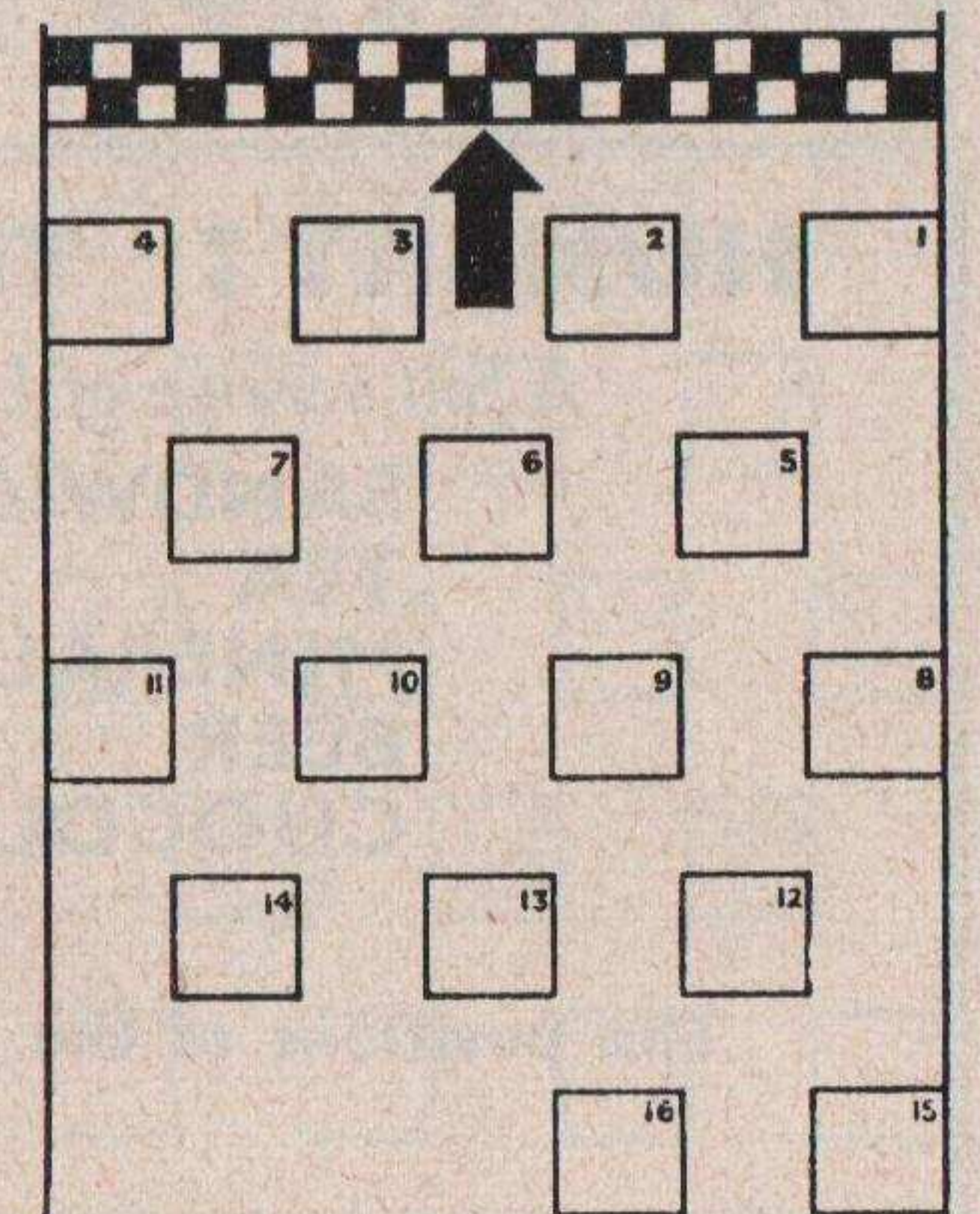
For sports cars up to 1500 c.c. unsuper-charged.

Final on Page 31

No.	Entrant and Driver	Car	c.c.
40	J. Coombs (Driver: R. Salvadori)	Cooper-Climax	1475
42	Team Lotus (Driver: I. Ireland)	Lotus-Climax	1475
48	P. Riley	Lotus-Climax	1098
50	A. R. Aubrey	Lotus-Climax	1098
<del>52</del>	<del>G. K. Lambert</del>	<del>Lotus-Climax</del>	<del>1098</del>
54	Motor Racing Enterprises (Driver: R. Dutt)	Lotus-Climax	1098
56	Elva Racing Team (Driver: <sup>McKee</sup> T. Dickson)	Elva-Climax	1098
58	R. Ham	Elva-Climax	1098
60	Taylor & Crawley Service Ltd. (Driver: M. J. C. Taylor)	Lola-Climax	1098
62	A. V. Hegbourne	Tojeiro-Climax	1098

### RESULT

1st..... 42 ..... 2nd..... 40 .....  
 3rd..... 56 ..... 4th..... 60 .....  
 Winner's speed..... 78.04 ..... m.p.h.  
 Fastest lap: Car No. 42 ..... at 79.94 ..... m.p.h.





# Lap Chart EVENT TWO

LAP

	1	2	3	4	5	6	7	8	9	10
1st	83	83	95							95
2nd	95	95	83							91
3rd	91	92								83
4th		91								91
5th		89								
6th		81								
7th		82								
8th		85								
9th		87								
10th		90								
11th		84								
12th		93								
13th		86								
14th		94								

-Spin  
+trick  
when 3rd

START 2.00 p.m.	10 LAPS	EVENT TWO
For touring cars complying with Appendix J to the International Sporting Code, Category 1, Group 3 (Special Touring cars).		<b>The Touring Car Race</b>

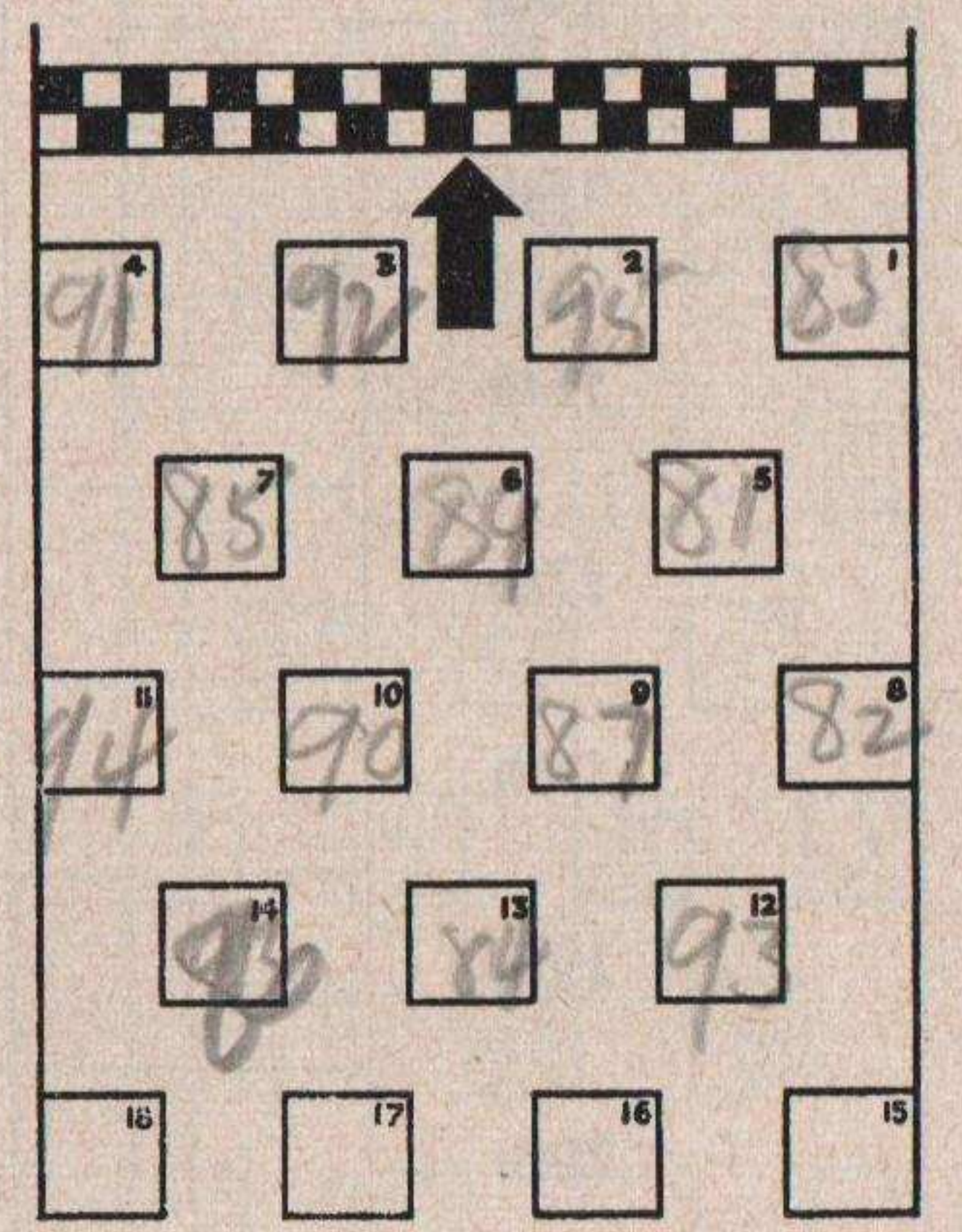
No.	Entrant and Driver	Car	c.c.
<b>Class A: 1301 c.c. to 1600 c.c.</b>			
81	W. B. Blydenstein	Borgward-Isabella	1493
87	G. Wulf	Borgward-Isabella	1493
82	G. H. Grace	Riley 1.5	1489
83	L. Leston	Riley 1.5	1489
84	L. Leston (Driver: C. Power)	Riley 1.5	1489
85	A. S. Hutcheson	Riley 1.5	1489
86	P. M. Jopp	Wolseley 1500	1489
96	H. R. Vincent	(Reserve) Wolseley 1500	1489
<b>Class B: Up to 1300 c.c.</b>			
89	J. M. Young	Ford Prefect	1172
90	Team Speedwell (Driver: G. Hill)	Austin A35...	948
91	Team Speedwell (Driver: L. A. Adams)	Austin A35...	948
92	G. C. Shepherd	Austin A40...	948
93	F. W. Marriott	Morris 1000	948
94	Rudd Racing Ltd. (Driver: R. D. Jennings)	Renault Dauphine	805
95	Alexander Engineering Ltd. (Driver: G. H. Williamson)	Austin A40...	948
97	D. Stevenson	(Reserve) Austin A35...	948

## RESULT

**Class A**  
 1st..... 83 (B.H.D.) ..... 2nd..... 92  
 3rd..... 82  
 Fastest lap: Car No. 83 at 64.98 m.p.h.

**Class B**  
 1st..... 95 ..... 2nd..... 92  
 3rd..... 91  
 Fastest lap: Car No. 92 at 66.37 m.p.h.

Overall Winner..... 95  
 Winner's speed..... 64.89 m.p.h.



12 mins 54.8

**HUNGRY? THIRSTY?**  
 A full service of Light Refreshments is provided at the Marquees

<b>SANDWICHES</b>	<b>CAKES</b>
<b>TEA</b>	<b>COFFEE</b>
<b>MINERALS</b>	<b>ICE CREAM</b>
<b>BEER</b>	<b>SPIRITS</b>
<b>CHOCOLATES</b>	<b>CIGARETTES</b>

at popular prices

The positions of the main Refreshment Marquees are shown on the plan on page 15



# Lap Chart EVENT THREE

LAP

1 2 3 4 5 6 7 8 9 10

1st	18								
2nd	19								
3rd	12								
4th									
5th									
6th									
7th									
8th									
9th									
10th									
11th									
12th									
13th									
14th									
15th									
16th									
17th									
18th									
19th									
20th									
21st									

START 2.25 p.m.

10 LAPS

For single-seater racing cars up to 500 c.c. unsupercharged.

EVENT THREE

## The Redex Challenge Trophy Race

No.	Entrant and Driver	Car	c.c.
1	M.P.H.W. Sales Ltd. (Driver: M. C. Brackenbury)	Cooper-Norton	499
2	J. Denley	Cooper-Norton	499
3	E. G. Willmott	Cooper-Norton	499
4	Motor Racing Enterprises (Driver: M. H. Clare)	Cooper-Norton	499
5	S. Foreman	Cooper-Norton	499
6	R. Bayton	Kieft-Norton	499
7	A. J. C. Newton	Cooper-Norton	499
8	W. J. Shaw	Cooper-Norton	499
9	A. D. Plumstead	Cooper-Norton	499
10	V. A. Hassall	Cooper-Norton	499
11	P. A. Desoutter	Cooper-Norton	499
12	R. R. Jackson (Driver: D. Parker)	Cooper-Norton	499
14	P. Ellis	Cooper-Norton	499
15	M. G. Thomas	Cooper-Norton	499
16	P. J. Mutton	Cooper-Norton	499
17	P. A. Luke	Cooper-Norton	499
18	S. S. Lancefield (Driver: T. Bridger)	Cooper-Norton	499
19	Lea's Garages Ltd. (Driver: J. Pitcher)	Cooper-Petty-Norton	499
20	R. F. Mayne	Kieft-Norton	499
21	Ecurie Heyward (Driver: C. W. A. Heyward)	C.H.S.-Norton	499
22	M. R. Lovell	Grenfell-Norton	499
23	M. Rainey	(Reserve) Cooper-Norton	499
24	G. A. Henrotte (Driver: D. J. Watson)	(Reserve) Ettorne-Norton	499

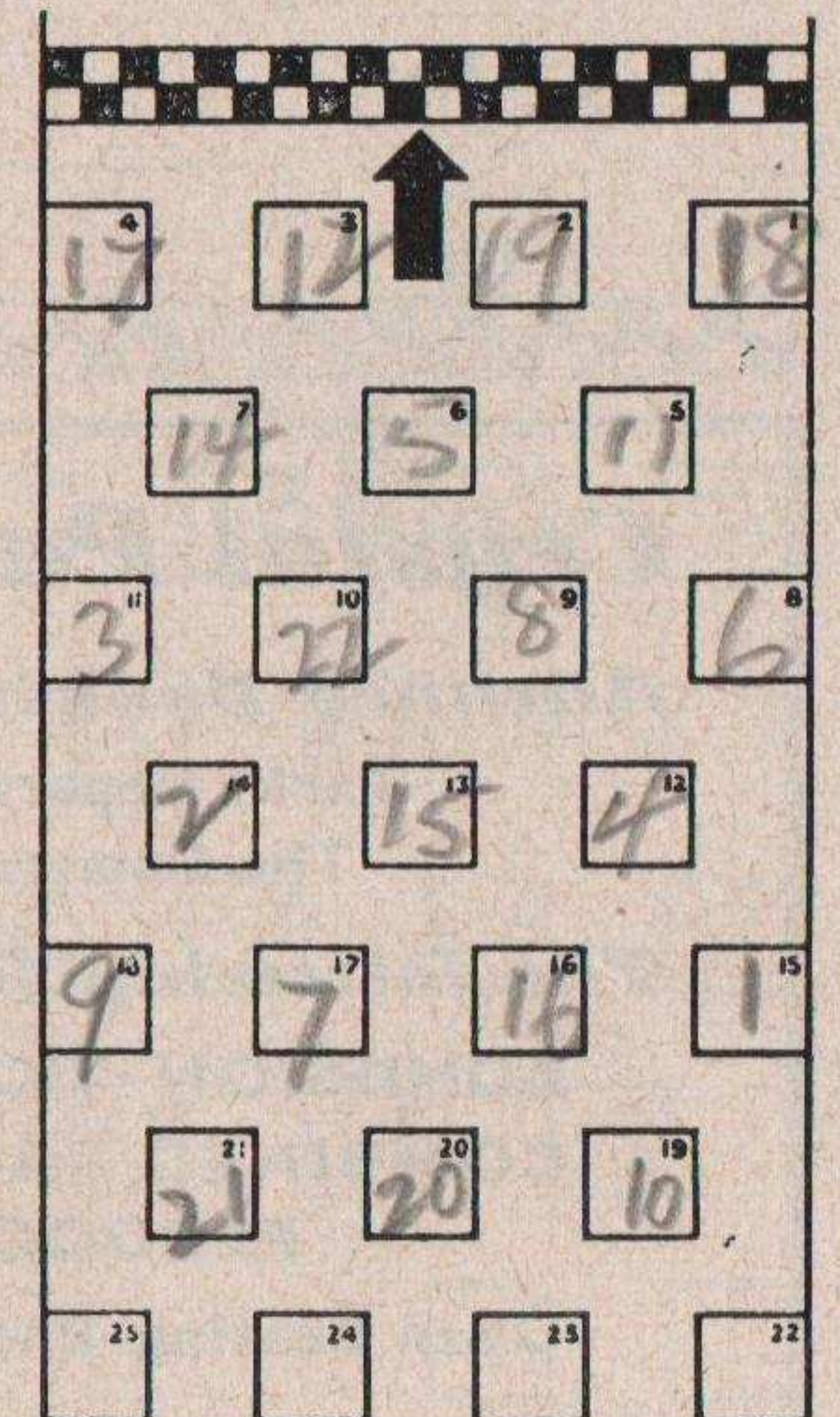
### RESULT

1st..... 18 ..... 2nd..... 19 .....

3rd..... 12 ..... 4th..... 7 .....

Winner's speed..... m.p.h.

Fastest lap: Car No..... at 73.68 m.p.h.



18 + 19

73.68  
75.82  
23



# Lap Chart EVENT FOUR

LAP

1 2 3 4 5 6 7 8 9 10

1st									59
2nd									53
3rd									57
4th									45
5th									63
6th									47
7th									51
8th									55
9th									
10th									
11th									
12th									
13th									
14th									

## Crystal Palace Road Racing Circuit

### Advance Booking Office—

Parks Department, London County Council, Room 493:  
The County Hall, S.E.1. Tel.: WAT 5000, Ext. 6207.

### The following facilities can be booked in advance—

ADMISSION TICKETS : : CAR PARK LABELS  
COMBINED ADMISSION AND PARKING TICKETS  
PADDOCK ADMISSION (Car Meetings only)

Open Seating Enclosure Tickets are on sale on the day only

START 2.50 p.m.

10 LAPS

EVENT FOUR

# The Anerley Trophy Race

HEAT TWO

For sports cars up to 1500 c.c. unsuper-charged.

Final on page 31

No.	Entrant and Driver	OK	Car	c.c.
41	Count S. Ouvaroff	crashed at 13. Hatch	Willment-Climax	1475
43	Team Lotus (Driver: A. Stacey)	engine trouble in practice	Lotus-Climax	1098
45	D. Randall		Lotus-Climax	1098
47	A. B. Rees...		Lotus-Climax	1098
49	R. N. Prior		Lotus-Climax	1098
51	M. G. Wills		Lotus-Climax	1098
53	A. F. Cook (Driver: C. Bristow)		Lotus-Climax	1098
55	John Hine Cars Ltd. (Driver: E. L. Hine)		Lotus-Climax	1098
57	Elva Racing Team (Driver: J. Brown)		Elva-Climax	1098
59	Lola Cars (Driver: P. H. Ashdown)		Lola-Climax	1098
63	Sewell & King (Chelmsford) (Driver: I. E. Raby)		Cooper-Climax	1098

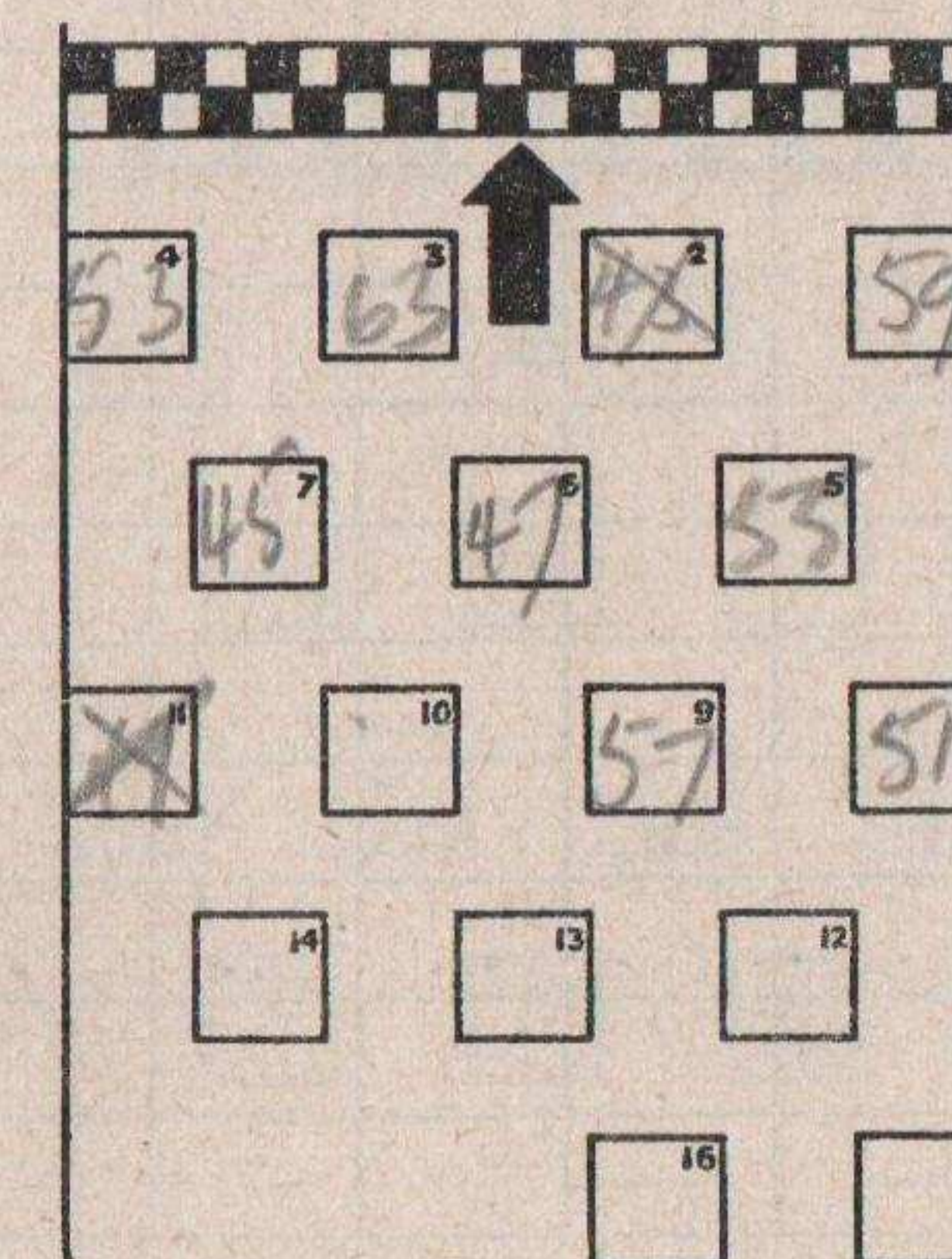
## RESULT

1st..... 59 ..... 2nd..... 53 .....

3rd..... 57 ..... 4th..... 45 .....

Winner's speed..... 78.04 .....m.p.h.

Fastest lap: Car No..... 59 ..... at..... 79.68 .....m.p.h.









# Lap Chart EVENT SIX

LAP

1 2 3 4 5 6 7 8 9 10 11 12 13 14 15

1st																			76
2nd																			75
3rd																			77
4th																			65
5th																			66
6th																			67
7th																			
8th																			
9th																			
10th																			
11th																			
12th																			
13th																			70
14th																			

**THE CHEQUERED FLAG** LTD  
*London's Leading Sports Car Specialists*  
**ALWAYS OFFER AN INCOMPARABLE SELECTION OF 100 HAND-PICKED SPORTS AND COMPETITION CARS AT ATTRACTIVE PRICES**  
 Tel.: CHiswick 7871/2/3 (Open 9 a.m. to 8 p.m. weekdays)  
**492-6 CHISWICK HIGH ROAD, LONDON, W.4**

**START 4.35 p.m.**

**15 LAPS**

**EVENT SIX**

## The Norbury Trophy Race

*For sports cars over 1500 c.c. unsuper-charged.*

No.	Entrant and Driver	Car	c.c.
64	J. Ewer ... ..	Lister-Chevrolet ... ..	5752
65	Brian Lister (Lt. Eng.) Ltd. (Driver: I. Bueb) ...	Lister-Jaguar ... ..	3781
66	Brian Lister (Lt. Eng.) Ltd. (Driver: B. Halford) ...	Lister-Jaguar ... ..	3781
67	W. F. Moss ... ..	Lister-Jaguar ... ..	3781
68	J. Sieff ... ..	Lister-Jaguar ... ..	3781
70	G. Lee ... ..	Jaguar XK120C ... ..	3442
71	R. M. Milne ... .. (Reserve)	H.W.M.-Jaguar ... ..	3442
72	P. Mould ... ..	Lister-Jaguar ... ..	2986
73	Ecurie Chiltern (Driver: M. E. S. Bond) ... ..	Aston Martin DB3S ... ..	2922
75	Team Lotus (Driver: G. Hill) ... ..	Lotus-Climax ... ..	2495
76	J. Coombs (Driver: R. Salvadori) ... ..	Cooper-Maserati ... ..	2489
77	J. Russell ... ..	Cooper-Climax ... ..	1960
78	Luxury Cars Garages (Driver: C. Bristow) ... ..	Cooper-Climax ... ..	1960
79	Dorchester Service Station (Driver: D. Piper) ...	Lotus-Climax ... ..	1960
80	Team Lotus (Driver: A. Stacey) ... ..	Lotus-Climax ... ..	1960

### RESULT

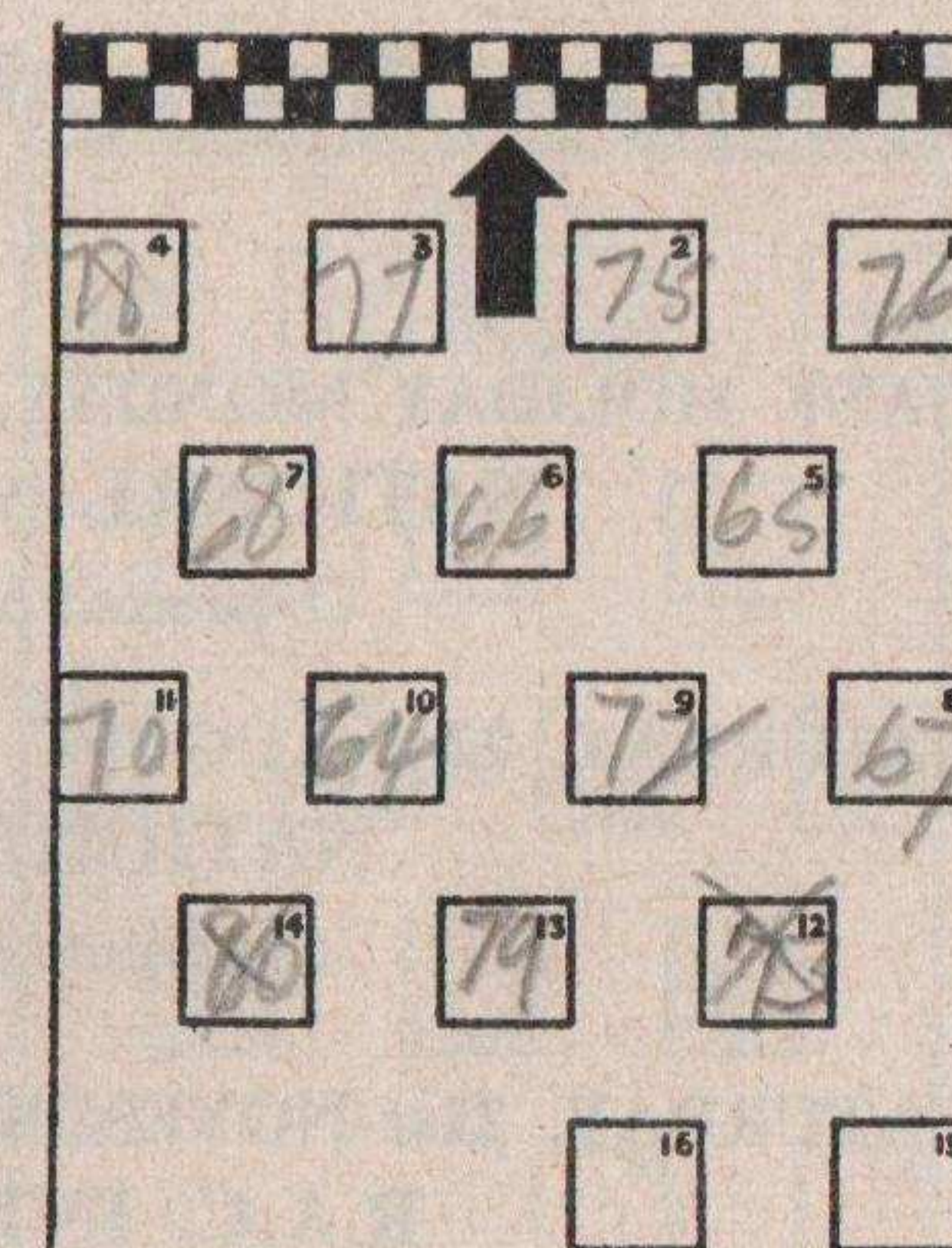
1st.....76..... 2nd.....75.....

3rd.....77..... 4th.....65.....

Winner's speed.....81.37.....m.p.h.

Fastest lap: Car No.....75..... at.....83.12.....m.p.h.

*1 min 0.2*





# Lap Chart EVENT SEVEN

LAP

1 2 3 4 5 6 7 8 9 10 11 12 13 14 15

1st															
2nd															
3rd															
4th															
5th															
6th															
7th															
8th															
9th															
10th															
11th															
12th															

## Future Race Meetings at Crystal Palace in 1959

BANK HOLIDAY MONDAY, 3rd AUGUST

NATIONAL MOTOR CYCLE RACE MEETING

Organised by the British Motor Cycle Racing Club

SATURDAY, 22nd AUGUST

NATIONAL MOTOR RACE MEETING

Organised by the British Automobile Racing Club

SATURDAY, 21st NOVEMBER

R.A.C. INTERNATIONAL RALLY RACES

START 5.05 p.m.

15 LAPS

EVENT SEVEN

# The Final of The Anerley Trophy Race

For sports cars up to 1500 c.c. unsuper-charged.

Heat one on page 19

Heat two on page 25

No.	Entrant and Driver	Car	c.c.
42	Michael	Lotus - Clie	
40	Salvadori	Copper Chimax	
56	McKell	Lotus - Chimax	
60	Taylor	Lotus - Clie	
53	Robertson	Lotus - C	
57	Brown	Lotus	
45	Ramsell	Lotus	
63	Robee	Copper	
47	Reese	Lotus	
48	Kiley	Lotus	
<del>50</del>	<del>Anhony</del>	<del>Lotus - Clie</del>	
<del>51</del>	<del></del>	<del></del>	
54	Dutt	Lotus	
58	Hann	Lotus	

### RESULT

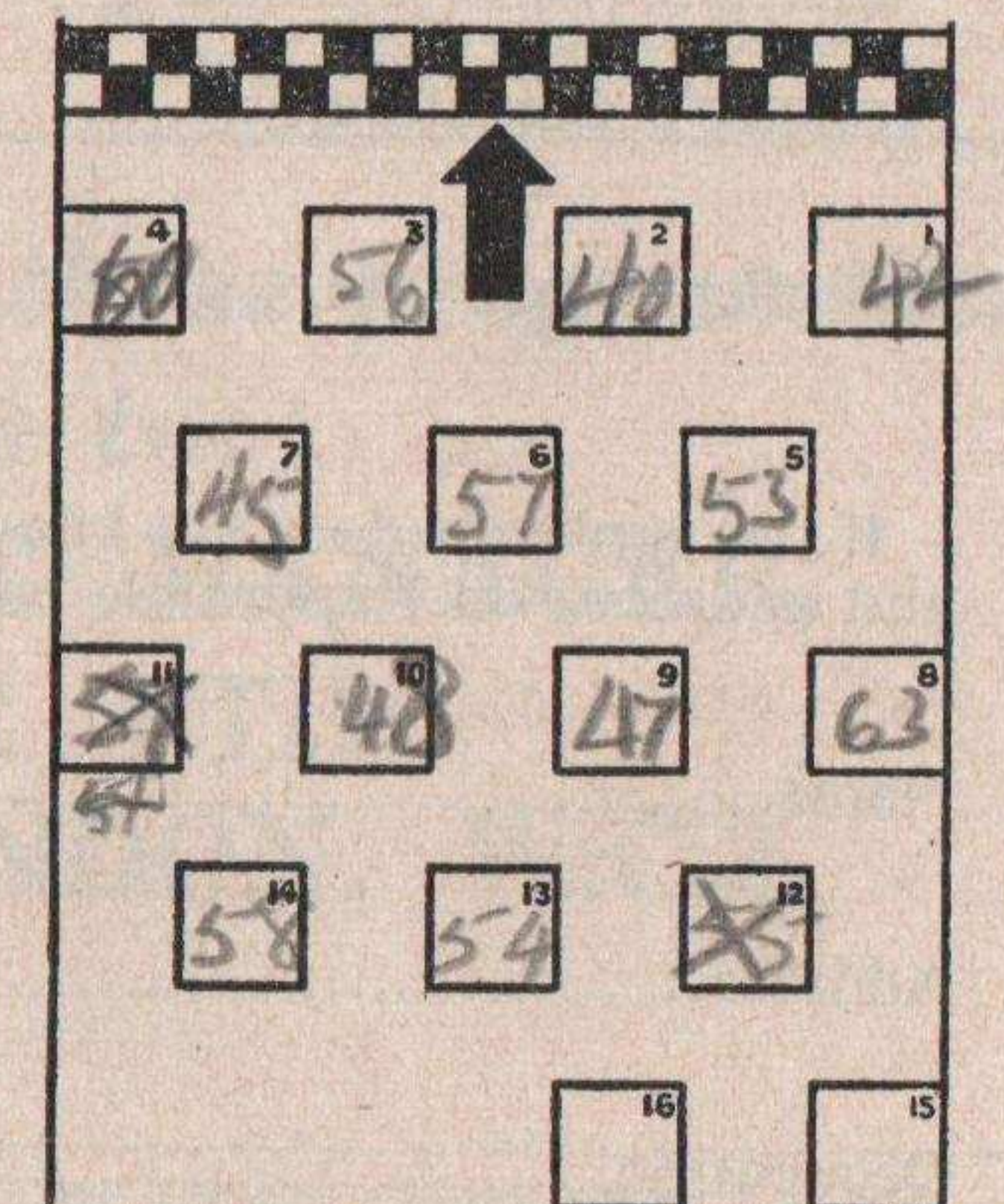
1st..... 42 ..... 2nd..... 40 .....

3rd..... ..... 4th..... .....

1100 c.c. class: 1st..... .....

Winner's speed..... m.p.h.

Fastest lap: Car No..... at..... m.p.h.





# The British Racing & Sports Car Club Ltd.

*Incorporating the 500 Club*

Patron: The Rt. Hon. THE EARL HOWE, P.C., C.B.E., V.D.

General Secretary:  
N. Syrett.

6 Buckingham Street,  
London, W.C.2  
Tra. 1351

## APPLICATION FOR MEMBERSHIP

Name in full.....  
(BLOCK LETTERS)

Address .....

Occupation.....

Tel. No. Home.....

Office .....

Nationality..... Date of Birth.....

I hereby make application to become a member of the British Racing & Sports Car Club Limited and, if elected, I undertake to abide by the Rules of the Club.  
I enclose herewith my cheque or money order for the £3 3s. (Annual Subscription £2 2s. Entry Fee £1 1s.)

Signature..... Date.....

We the undersigned, being fully paid up members of the British Racing & Sports Car Club Ltd., have a personal knowledge of the above applicant and consider him to be a fit and proper person to become a member of the British Racing & Sports Car Club Ltd.

Proposer's Signature.....

Seconder's Signature.....

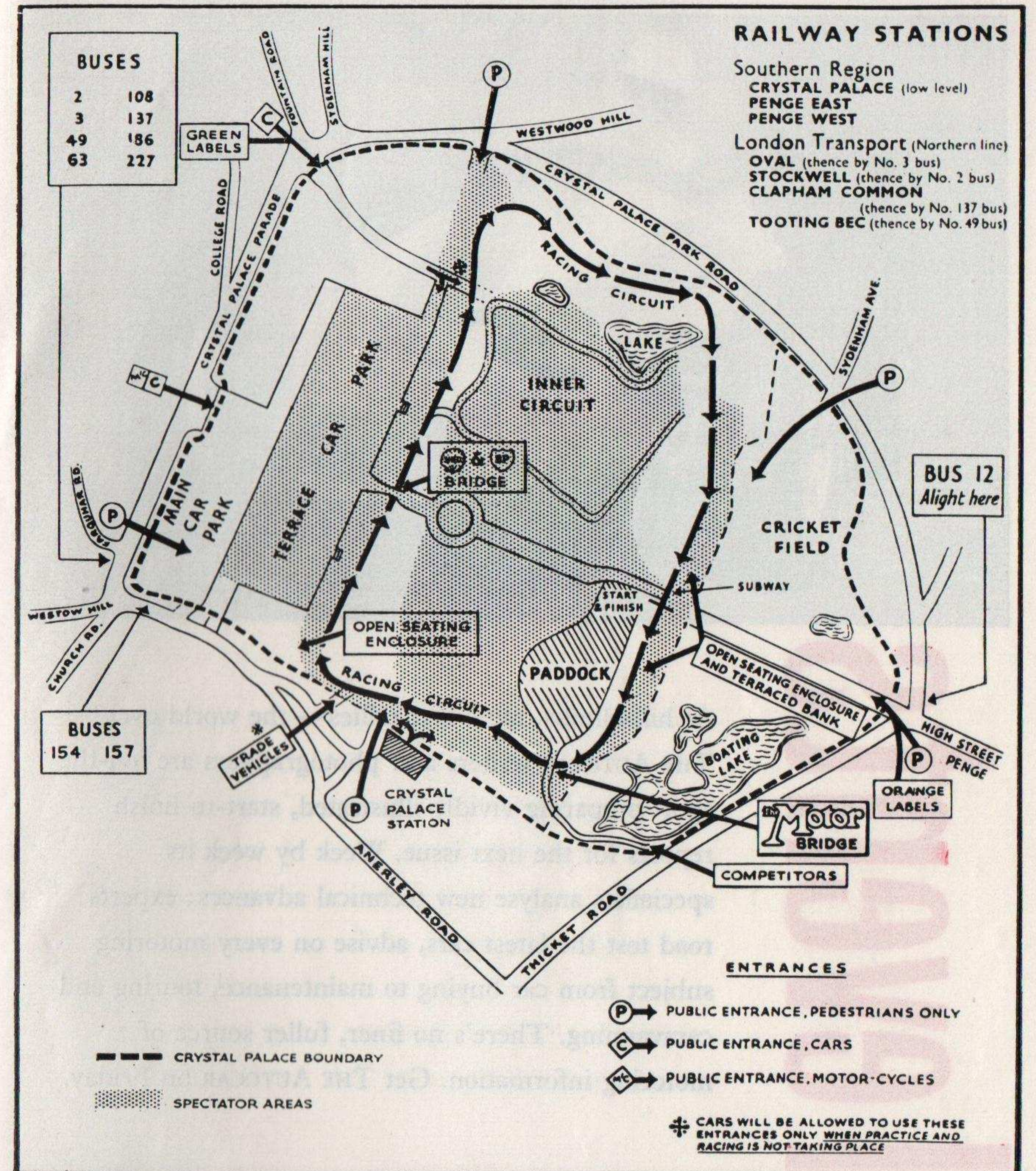
### NOTES

If the applicant does not know any member to sign above, please state below the name and address of a responsible person to whom reference may be made.

Name.....

Address .....

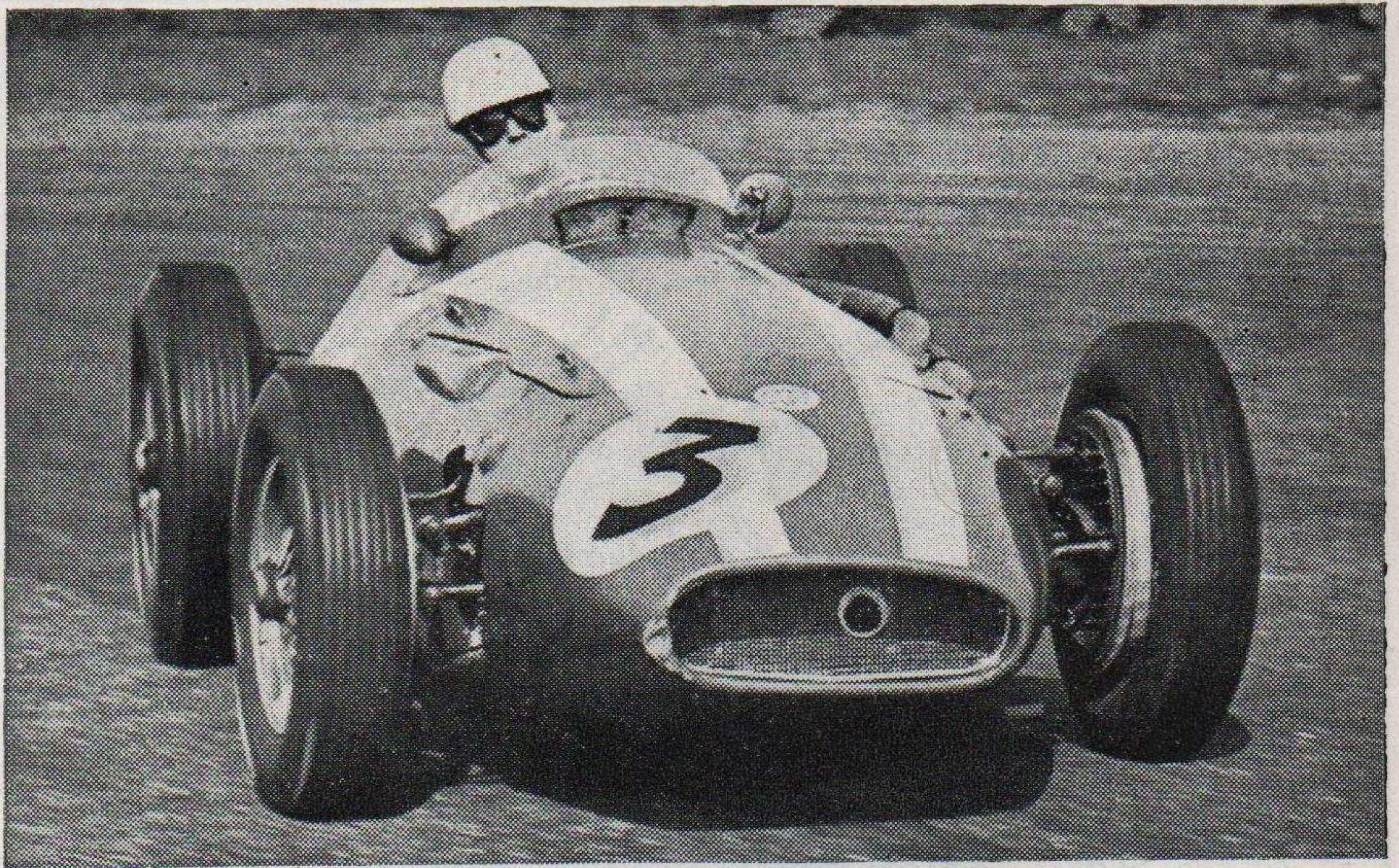
Occupation.....



*Enquiries for advertising in these programmes should be made to:*

**THE ADVERTISEMENT MANAGER,  
PEARL, COOPER LTD.,  
48 Chandos Place, LONDON, W.C.2  
TEM. 8111**





**at all events**

At hill-climbs, races and rallies — the world over — THE AUTOCAR writers and photographers are 'on-the-spot' preparing vividly-illustrated, start-to-finish reports for the next issue. Week by week its specialists analyse new technical advances; experts road test the latest cars, advise on every motoring subject from car buying to maintenance, touring and caravanning. There's no finer, fuller source of motoring information. Get THE AUTOCAR on Friday.

*The* **Autocar**

**first away and always ahead**

**FRIDAYS 1s.**