

SUNDAY 25th AUGUST 1968

PROGRAMME 2s 6d

BRANDS HATCH

BRSCC Clubman's Car Races

Organised by the BRSCC for Brands Hatch Circuit Ltd.



Autocar

FIRST AWAY AND
ALWAYS AHEAD

THURSDAY 2s 6d.

BRANDS HATCH 1968 FIXTURE LIST

Motor Race Meeting

Sunday 25th AUGUST 1968



BRSCC CLUBMAN'S CAR RACES

Organised by the British Racing & Sports Car Club
for Brands Hatch Circuit Ltd.

*This meeting is held under the General Competition
Rules and Standing Supplementary Regulations of
the RAC and Supplementary Regulations.*

R.A.C. Permit No. R.S. 3850

CONTENTS

	Page
1968 Fixtures	Inside Front Cover
Flag Signals, Notice to Competitors, etc.	2
Officials of the Meeting	3
Programme of Events and Awards	3
Editorial — The Club Racing Scene	4 - 5
Event 1 — Clubman's Sports Car Race	6
Event 2 — Special Sports Car Race	7
Event 3 — Formula Ford Racing Car Race	8
Event 4 — Special Saloon Car Race	9
Event 5 — Yazaki Formule Libre and Special GT Car Race	10 & 12
Championship Points	12
Event 6 — Special Saloon Car Race	13
Lap Speed Table	16
Map of Circuit	Inside Back Cover

COVER PHOTOGRAPH

Cortina chases Mini. Two of the most popular racing saloon cars, which provide excellent entertainment, every time they appear. (Photograph by Peter Cromer)

DATE	EVENT	RACES	CHARGES
31 Aug.	‡BRSCC Car Practice for Sept. 2.	S6, S4, F3, T5	5/-A, Rovers
1 Sept.	Rochester DMC Stock Car Races	Spedeworth	7/6A, 2/6C, 5/-S
1 Sept.	Civil Service MC Car Sprint	S, GT, PS, T	3/6A, CF, Rovers
2 Sept.	‡BRSCC GUARDS INTERNATIONAL CAR RACES	S6 and S4†, F3, T5	15/-A, 5/-C, 15-20/-S, 10/-OS, 20/-P
8 Sept.	‡Brands R.C. Derek Minter Benefit Motor Cycle Races	All Classes	10/-A, 2/6C, 10/-S, 5/-OS, 10/-P
14 Sept.	BMCRC Clubman's Motor Cycle Races	All Classes	7/6A, CF, Rovers
15 Sept.	Maldstone MKMC Dartford Cup Car Races	*F3, *FF, *T, *GT, *PS, C	10/-A, 2/6C, Rovers
22 Sept.	Sevenoaks DMC Clubman's Car Races	FL, FF, T, GT, PS	7/6A, CF, Rovers
28 Sept.	Brands R.C. Clubman's Motor Cycle Races	All Classes	7/6A, CF, Rovers
29 Sept.	‡BRSCC Gravesend Cup Grand Prix Circuit Car Races	*F3†, *FF, *T, *GT, *PS, SC	10/-A, 2/6C, 5-10/-S, 5/-OS, 10/-P
6 Oct.	‡BRANDS R.C. "Evening News" RACE OF THE SOUTH MOTOR CYCLE RACES	All Classes	10/-A, 2/6C, 10/-S, 5/-OS, 10/-P
13 Oct.	Rochester DMC Stock Car Races	Spedeworth	7/6A, 2/6C, 5/-S
20 Oct.	‡BARC INTERNATIONAL GUARDS MOTOR SHOW 200 SALOON CAR RACE	T5†, F3, Hist	15/-A, 5/-C, 5-10/-S, 5/-OS, 10/-P
27 Oct.	‡Brands R.C. Kentish 100 Motor Cycles Race	All Classes	7/6A, 2/6C, 10/-P
3 Nov.	Surrey SMC Clubman's Car Races	FL, FF, T, GT, PS, C	7/6A, CF, Rovers
10 Nov.	Sevenoaks DMC £700 Redex Saloon Car Races	FL, *FF, T†, GT, *PS, C	10/-A, 2/6C, Rovers
17 Nov.	Rochester DMC Clubman's Car Races	FL, FF, T, GT, PS, C	7/6A, CF, Rovers
24 Nov.	London M.C. November Cup Car Races	*F3†, *FF, T, GT, *PS, C	10/-A, 2/6C, Rovers
1 Dec.	Thames EAC Clubman's Car Races	FL, FF, T, GT, PS, C	7/6A, CF, Rovers
8 Dec.	Mini-7 Mini-70 Car Races	T†, *FF, GT, *PS	10/-A, 2/6C, Rovers
15 Dec.	Tunbridge WMC Car Sprint	S, GT, T, PS	3/6A, CF, Rovers
26 Dec.	BRSCC Lombank Christmas Trophy Car Races	*F3, *FF, T†, GT, *PS	10/-A, 2/6C, 10/-S, 10/-P
29 Dec.	‡Brands R.C. £1,500 Yuletide Motc / Cycle Races	All Classes	10/-A, 2/6C, 10/-S, 10/-P

KEY
Races: F1—Formula One FL—Formule Libre. F3—Formula 3. FF—Formula Ford. Hist—Historic Racing Cars. S6—Group 6 Sports Prototype. S4—Group 4 Sports. S—Special Sports Racing (Club-type). GT—Special Grand Touring (Club-type). PS—Production Sports (Club-type or marque cars). C—Clubman's Sports. T5—Group 5 Saloon. T—Saloon Cars (Club-type).
Charges: A—Adults. C—Children. CF—Children Free. S—Covered Stands. OS—Open Seats or Stands. SF—Stands Free. P—Paddock. SBP—South Bank Parking. ROVERS—Stands and/or Paddock Free. **ALL NORMAL PARKING FREE.** †Main race of the day. Usually longer than others and may incorporate pit stops. RACES AT-RISKED i.e. *GT indicate a round of a sponsored championship: GUARDS Championship for Formula Ford. TOOTAL MEN'S WEAR Championship for GT Cars REDEX GOLD CROSS Championship for Saloon Cars. LOMBANK Formula 3 Championship. AMASCO Championship for Production Sports Cars. † indicates round of 1968 motor cycle Castrol Challenge ‡—2.65 Grand Prix Circuit

THE CHEQUERED FLAG
 ENGLAND'S LEADING SPORTS CAR SPECIALISTS
 ALWAYS FIRST FOR A SUPERB SELECTION, UNBEATABLE VALUE & UNRIVALLED SERVICE
 Chiswick High Road, London W.4. Tel: CHI 7871/TUR 0022

For the Attention of Spectators

Please do not leave litter about the grounds — take it with you.
The BRSCC wish to acknowledge with thanks the valuable assistance given by the individual marshals in conducting this event.
If an accident occurs, leave it to the marshals, the doctors and St. John Ambulance men who are in attendance.

Remember to drive with care and caution when leaving the ground.
To safeguard both competitors and public — **dogs are not admitted unless kept on a leash. This is most important.**

Prohibited Area Notices: The public are not permitted in the areas where these notices are displayed. The fences are there for protection, and any person or persons found trespassing, or wilfully damaging trees, fences, etc., will be prosecuted by Brands Hatch Circuit Ltd.

Condition of Admission

Spectators attending the track do so entirely at their own risk. It is a condition of admission that the Brands Hatch Circuit Limited and all persons having any connection with the promotion and/or organisation and/or conduct of the meeting (including the drivers and owners of vehicles and passengers in vehicles) are absolved from all responsibility and liability whatsoever from negligence, or by accident causing loss, damage or personal injury to spectators or ticket holders, or to their goods or vehicles.

Postponement of the Meeting

The Club reserves the right to postpone or cancel the meeting

FLAG SIGNALS

UNION JACK	Start.
RED	Stop immediately.
YELLOW (Waved)	Great danger: prepare to stop: no overtaking
YELLOW (Motionless)	Take care: danger.
BLUE (Waved)	Another competitor is trying to overtake.
BLUE (Motionless)	Another competitor is following closely.
YELLOW WITH RED STRIPES	Oil on the course.
WHITE	Ambulance or service car on the course.
BLACK (With Number)	Car with that number must call into the pits.
BLACK AND WHITE CHEQUERED	End of race.

Acknowledgments

The Official Course Car has been kindly made available by
THE FORD MOTOR COMPANY LIMITED
DUPLICATOR Kindly supplied by RONEO LTD.
CARAVAN kindly loaned by WILSONS MOTOR CARAVAN CENTRE LIMITED
of Brixton, London and Bradford, Yorkshire.

This meeting is promoted by

MOTOR CIRCUIT DEVELOPMENTS LTD.

Managing Director: John Webb

For BRANDS HATCH CIRCUIT LTD.

General Manager: C. J. D. Lowe

**Brands Hatch Circuit Ltd. Fawkham Nr. Dartford Kent.
West Ash 331**

Officials of the meeting

Stewards: For RAC K. W. Bickle
For the BRSCC L. Lewis-Evans
B. L. O'Hara

Judges: G. Lee J. Norris

Clerk of the Course: N. Syrett

Secretary of the Meeting:

D. A. Southwood

Race Control: B. H. Crow

Mrs. B. H. Crow P. Morley

Mrs. K. Cave Miss J. Everett

Miss A. Kemsley Miss S. Winslade

Timekeepers: C. Audrey

P. Aumonier M. Eyre

M. Koeller A. Lee R. Oates

Race Recorders: Mrs. D. Audrey

Miss P. Wallis

Scrutineers: F. Harrison

N. C. Croucher R. C. Croucher

K. Salmon F. W. Monk

Scrutineers' Asst.: Mrs. R. C. Croucher

Commentator: J. Heasman

Chief Marshal: E. E. C. Goodman

Chief Observer: H. G. Webley

Chief Flag Marshal: M. L. Terrell

Chief Paddock Marshal:

H. W. Lamkin

Starter: C. Greville-Smith

Chief Start-Line Marshal:

L. T. Smith

Chief Pit Marshal: A. Peers-Jones

Chief Results Board Marshal:

C. Willoughby

Chief Fire Officer: A. G. C. Hyder

Rescue Service: P. H. Copper

Medical Officers: Dr. F. Cramer

Dr. R. Bown Dr. D. D. Craig

Dr. D. Hiley Dr. K. J. Holley

Dr. A. J. Lyons Dr. D. Nancekievill

Dr. R. Penrose Dr. M. Radzan

Dr. K. J. Walker

Medical Services:

St. John Ambulance Brigade

Marshals: Members of the BRSCC

Press Officer: G. Macbeth

Programme of Events & Awards

	Laps	Start
EVENT 1. CLUBMAN'S SPORTS CAR RACE	10	3.00 p.m.
To the drivers of cars finishing 1st, 2nd. and 3rd. in each class — A Trophy		
EVENT 2. SPECIAL SPORTS CAR RACE	10	3.25 p.m.
To the drivers of cars finishing 1st, 2nd. and 3rd. in each class — A Trophy		
EVENT 3. FORMULA FORD RACING CAR RACE	10	3.50 p.m.
To the drivers of cars finishing 1st, 2nd. and 3rd. — A Trophy		
EVENT 4. SPECIAL SALOON CAR RACE	10	4.15 p.m.
To the drivers of cars finishing 1st, 2nd. and 3rd. — A Trophy		
EVENT 5. YAZAKI FORMULE LIBRE AND SPECIAL GRAND TOURING CAR RACE	10	4.40 p.m.
To the drivers of cars finishing 1st, 2nd. and 3rd. in each class — A Trophy		
EVENT 6. SPECIAL SALOON CAR RACE	10	5.05 p.m.
To the drivers of cars finishing 1st, 2nd. and 3rd. in each class — A Trophy		

THE CLUB RACING SCENE

by Graham Macbeth

photographs by Peter Cromer

Talk to visitors from abroad and they will express amazement at the undiminishing procession of up-and-coming drivers from Great Britain who go into the big-time of motor racing. No sooner is there a place available in a top motor racing team than there are half-a-dozen young men having a test with a view to filling it. And invariably they fill it not just adequately but admirably.

They all come up for serious consideration because of the system of British "club" motor racing. And it all starts with meetings just like this one at Brands Hatch today.

Except for Event 5, which is a qualifying round for the season-long Yazaki Formule Libre Championship, nothing hangs on this meeting at all. Yet here we are with a good quality entry and, given a dry track, an excellent chance of lap records going and, without doubt, every prospect of a good day's sport and a sign that one or two drivers are worth watching for the future.

Indeed, so effective is British "club" racing in bringing on drivers by giving them experience (and the experience they will get today is ideal for getting them used to the biggest meetings of the future — just look at today's list of officials and compare it with that on Bank Holiday Monday's International meeting; you will find them almost exactly the same) that drivers now come from all over the world to learn how it is done in British "club" events.

Recently, there have been drivers from South America, North America, Japan and all over Europe, not to mention Australia, New Zealand and Canada, among the ranks of club meeting entry lists. If you want to get on in motor racing, the quick way to do it is to take part in British "club" events. Ask Tim Schenken from Australia, Tetsu Ikuzawa from Japan and Claude Bourgoignie from Belgium!

Of course, there are lots of "club" drivers who never expect to become Grand Prix stars but who still do well. Clive Lacey is one who often wins at Brands Hatch and has been doing so for years. He enjoys his racing here and seldom competes elsewhere (although he is due to contest the next Yazaki

round at Snetterton on Bank Holiday Monday).

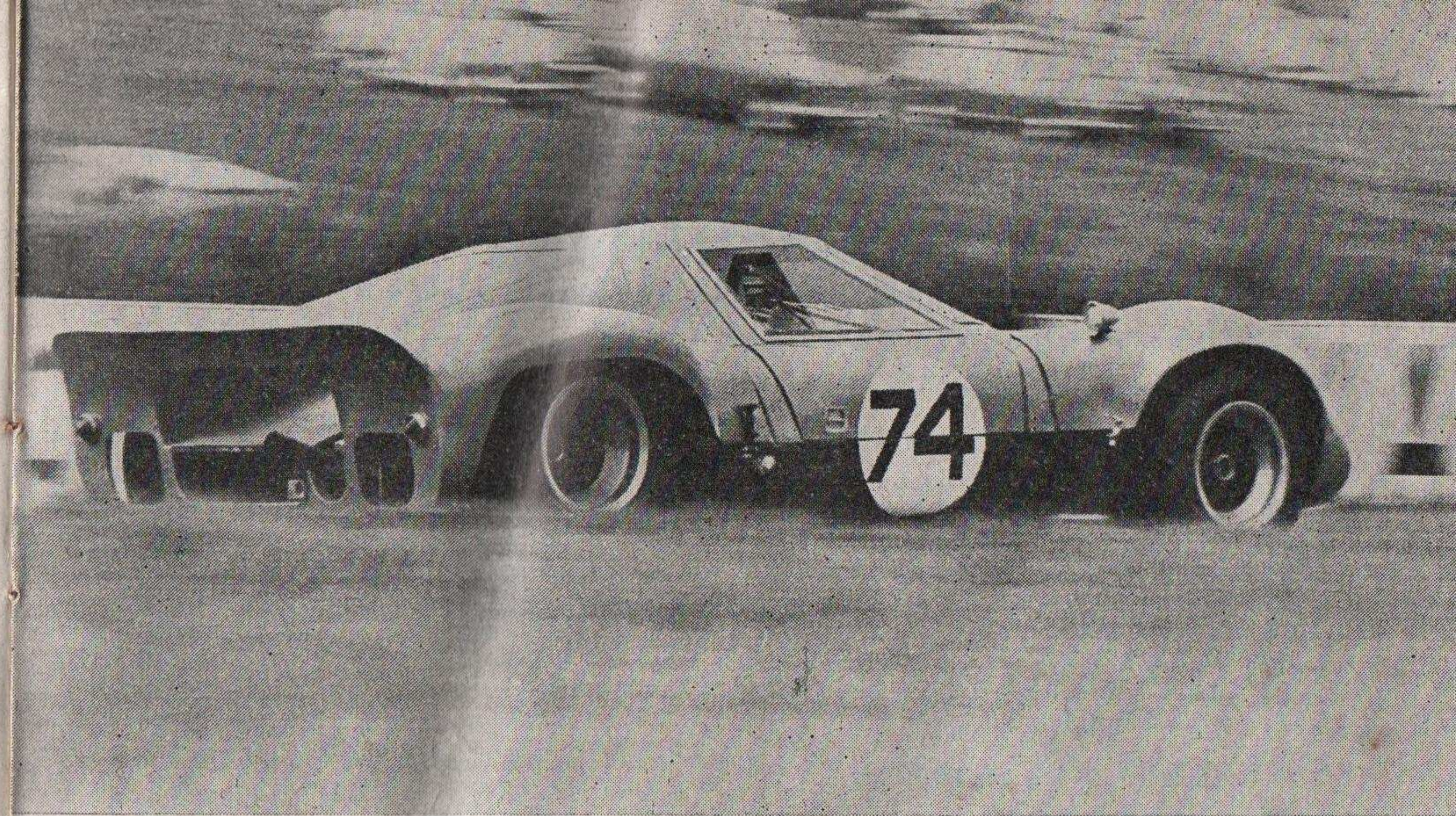
Here today is an almost cross-section of the cars in motor racing. The first race, for Clubman's sport cars, demonstrates an ideal training ground of simple and relatively cheap open-wheeled two-seaters, using engines which are easily tuned and inexpensive to repair, yet the cars are fast and react much like single-seaters. Jack Murrell's DRW holds the lap record at a rousing 80-plus mph and is only four seconds outside the absolute lap record for the "Club" circuit.

"Special sports cars" (Event 2) are the production model two-seaters but they need to be specially tuned if they are to go like the ones racing this afternoon. However, you can go into a dealer's showroom in most towns tomorrow morning and buy an E-type Jaguar, MG B, Triumph Spitfire or Austin Healey Sprite and with a good deal of hard work you could turn it into a car which would be competitive with those in this race.

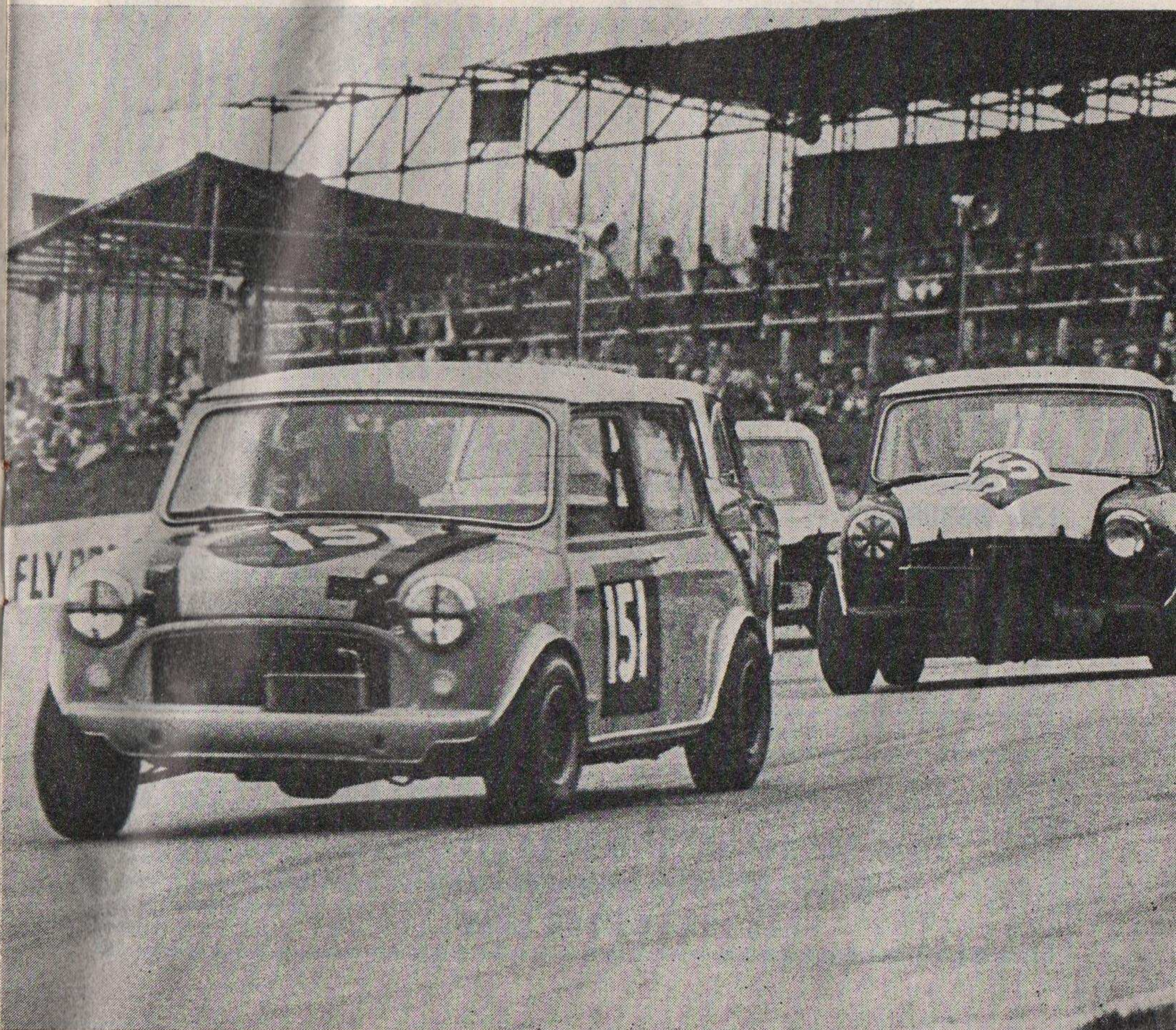
Formula Ford is a bit more specialised. These are real racers, single-seaters closely related (chassis-wise) to the Grand Prix cars which are the ultimate ambition of a good number of drivers in Event 3. But the engines are interchangeable with those in the many Ford Cortina GT saloons in the car parks around you and what you are allowed to do with them in the way of tuning is very strictly controlled. Fast lads in this field are Tony Trimmer and Ray Allen, the latter in a relatively new car, the Macon, whose predecessors made a big mark in Monoposto Register racing (a more specialised but probably even cheaper form of single-seater competition) last season.

Racing saloons are popular with drivers and spectators alike and Events 4 and 6 have a goodly selection. You can build up quite a quick racing Mini for as little as £400 and the way some drivers throw them about demonstrates what safe machines they are, basically. Watch Terry Harmer's Mini-Cooper and Bill McGovern's Imp in the first saloon race and the Anglias of Pat Mannion and Zekia Redjep in the other one and you will see something of the standard of racing which makes for success in "club" events.

The Formule Libre race, counting towards the Yazaki championship, brings to the line one of the most promising of the up and coming club drivers Tony Trimmer who is having a go in a Brabham F3 car. Let's see how he gets on against Tony Lanfranchi.



GT cars (Top), and saloon cars (below) are just two of the exciting types of cars which will appear today.



EVENT 1 Start: 3.00 p.m. 10 Laps

Scratch Race

FOR CLUBMAN'S FORMULA SPORTS CARS

No.	Entrant and Driver	Car	cc
Class A — 1001 cc to 1500 cc			
61	Sid Turner	Lotus-Ford	1498
62	Robert Robertson	Lotus-Ford	1497
63	M. King	Lotus-Ford	1498
64	David Rickward	Lotus-Ford	1498
65	Robert Vieira	Lotus-Ford	1498
68	Barry Smith	U2-Ford	1498
69	Peter Wingfield	U2-Ford	1498
70	Jack Murrell	DRW-Ford	1498
71	Ron Rumble	Chevron-Ford	1498
Class B — Up to 1000 cc			
81	Charles Scammell	Lotus-Ford	997
82	Richard Cash	Lotus-Ford	997
83	R. C. Cole	Lotus-Ford	997
84	Mike Panico	Lotus-Ford	997
85	Nicholas Overall	Lotus-Ford	997
90	Alan Cook	Chevron-BMC	997
92	Michael J. Cole	U2-Ford	997
93	Rob Privett	U2-Ford	997

RESULTS

Overall	1st.....	2nd.....	3rd.....	Winner's Time.....	Speed.....
Class A	1st.....	2nd.....	3rd.....	Winner's Time.....	Speed.....
	Fastest Lap by Car No.....		Time.....	Speed.....	
Class B	1st.....	2nd.....	3rd.....	Winner's Time.....	Speed.....
	Fastest Lap by Car No.....		Time.....	Speed.....	

LAP RECORDS

Clubman's Sports Cars — 1001 - 1500 cc	secs	mph	date
J. Murrell (1498 cc DRW-Ford)	55.2	80.82	7.7.68
Race Record: J. Murrell (1498 cc DRW-Ford)		78.87	7.7.68
Clubman's Sports Cars — Up to 1000 cc	secs	mph	date
Barry Foley (998 cc Lotus 7 Ford)	57.0	78.32	9.6.68
Race Record: Barry Foley (998 cc Lotus 7 Ford)		76.70	9.6.68

MOTOR RACING STABLES

Send for details of how to start Motor Racing
at our private race-training meetings.
see back page

^{141 121 +}
^{133 143}
¹⁴⁶
EVENT 2 Start: 3.25 p.m. 10 Laps

Scratch Race

FOR SPECIAL SPORTS CARS AS DEFINED BY THE BRSCC

No.	Entrant and Driver	Car	cc
Class A — Over 2000 cc			
121	Mike Loveday	Jaguar 'E' Type	3781
122	John Wilson	Jaguar 'E' Type	3781
123	William Viney	Austin Healey 3000	2912
125	Ian Topping	AC Ace	2553
126	Paul Smurthwaite	Triumph TR2	2196
Class B — 1151 cc to 2000 cc			
131	Alan Ralph	MG MGB	1798
132	John Maclay	Turner GT	1650
133	Geoff Daryn	Turner GT	1498
135	Bill Sloan	Triumph Spitfire	1296
136	Futura Signs Ltd. (Dvr.: Rob Cox)	Austin Healey Sprite	1293
137	Len Street (Engineering) Ltd. (Dvr.: John Pledger)	Lotus Elite	1216
Class C — Up to 1150 cc			
141	Richard Lloyd	Triumph Spitfire	1147
142	Highland Racing (Dvr.: Barry Wood)	Austin Healey Sprite	1115
143	John Elvers	Austin Healey Sprite	1115
144	David Wood	Austin Healey Sprite	1098
145	Chris Lunn	Austin Healey Sprite	1098
146	R. Eccles	Austin Healey Sprite	1080
147	Keith Ashby	Austin Healey Sprite	1080
148	Charles Merriman	Austin Healey Sprite	979
150	Raymond Carroll	MG Midget	998

RESULTS

Overall	1st.....	2nd.....	3rd.....	Winner's Time.....	Speed.....
Class A	1st.....	2nd.....	3rd.....	Winner's Time.....	Speed.....
	Fastest Lap by Car No.....		Time.....	Speed.....	
Class B	1st.....	2nd.....	3rd.....	Winner's Time.....	Speed.....
	Fastest Lap by Car No.....		Time.....	Speed.....	
Class C	1st.....	2nd.....	3rd.....	Winner's Time.....	Speed.....
	Fastest Lap by Car No.....		Time.....	Speed.....	

LAP RECORDS

Special Sports Cars — Over 3000 cc	secs	mph	date
Rob Schroeder (3781 cc Jaguar E-type)	55.4	80.58	23.6.68
Race Record: Rob Schoeder (3781 cc Jaguar E-type)		78.62	23.6.68
Special Sports Cars — 2001 - 3000 cc	secs	mph	date
John Chatham (2912 cc Austin-Healey 3000)	58.2	76.70	2.6.68
Race Record: Stewart Hands (2985 cc Austin-Healey 3000)		75.10	2.6.68
Special Sports Cars — 1151 - 2000 cc	secs	mph	date
Roger Enever (1293 cc MG Midget)	57.2	78.04	3.3.68
John Britten (1293 cc MG Midget)	57.2	78.04	28.4.68
Race Record: Roger Enever (1293 cc MG Midget)		76.49	3.3.68
Special Sports Cars — Up to 1150 cc	secs	mph	date
Mrs. Gabriel Konig (1144 cc MG Midget)	57.8	77.23	23.6.68
Garo Nigogosian (1147 cc MG Midget)	57.8	77.23	23.6.68
Race Record: Mrs. Gabriel Konig (1144 cc MG Midget)		75.60	23.6.68

EVENT 3 Start: 3.50 p.m. 10 Laps

Scratch Race

FOR FORMULA FORD SINGLE-SEATER RACING CARS

No.	Entrant and Driver	Car	cc
3 1	Mark Litchfield	Lotus	1598
2	Maxwell Samuel-Camps	Lotus	1598
3	Peter Gray	Lotus	1598
4	Christopher Winslow	Lotus	1598
7	Renato Bertorelli	Merlyn	1598
2 8	Denis Rowland	Merlyn	1598
9	James Mortimer (Dvr.: Tony Goodwin)	Merlyn	1598
12	Michael Catlow	Titan	1598
14	David Minister	Titan	1598
16	Frank Williams (Racing Cars) Ltd. (Dvr.: Tony Trimmer)	Brabham	1598
17	James Mortimer (Dvr.: Tony Mundy)	Brabham	1598
19	Steve Matchett	Russell-Alexis	1598
22	R. A. Cowman (Dvr.: Gerald Brown)	Macon	1598
23	Motor Racing Stables Ltd. (Dvr.: Ray Allen)	Macon	1598
24	Motor Racing Stables Ltd. (Dvr.: Judd Mangurian)	Lotus	1498
5 25	Motor Racing Stables Ltd. (Dvr.: John Howell)	Lotus	1498
26	Motor Racing Stables Ltd. (Dvr.: Maurice Angliss)	Lotus	1498
27	Motor Racing Stables Ltd. (Dvr.: Don Spence)	Lotus	1498
28	Motor Racing Stables Ltd. (Dvr.: Melvyn Crowther)	Lotus	1498
29	Mike Walker	Lotus	1498
Reserves			
21	Toby Matthews (1st Reserve)	Russell-Alexis	1598
20	Don L. Wilson (2nd Reserve)	Russell-Alexis	1598
4 18	John Brown (3rd Reserve)	Brabham	1598

RESULTS

1st.....	2nd.....	3rd.....
4th.....	5th.....	6th.....
Fastest Lap by Car No..... Time..... Speed.....		

LAP RECORD

Racing Cars — Formula Ford	secs	mph	date
Tim Schenken (1598 cc Merlyn Mk 11)	55.6	80.29	31.3.68
Race Record: Tim Schenken (1598 cc Merlyn Mk 11)		78.35	19.5.68

EVENT 4 Start: 4.15 p.m. 10 Laps

Scratch Race

FOR SPECIAL SALOON CARS UP TO 1000 cc

No.	Entrant and Driver	Car	cc
201	Dennis Hoyle	Austin Mini-Cooper 'S'	999
204	Charles Page	Austin Mini-Cooper	998
206	G. O'Connor	Austin Mini-Cooper	997
208	Terry Harmer	Austin Mini-Cooper 'S'	970
209	Jonathan Lyons	Austin Mini-Cooper 'S'	970
210	R. Jones (Dvr.: Entrant or P. Hutton)	Austin Mini-Cooper 'S'	970
212	Ian Pettie	Morris Mini-Cooper 'S'	999
214	Martin Crosthwaite (Dvr.: Entrant or Michael Cookson)	Morris Mini-Cooper 'S'	999
215	Ian Bradbery	Morris Mini-Cooper 'S'	999
216	John Salisbury	Morris Mini-Cooper	998
218	Peter Bevan (Dvr.: Bill McGovern)	Sunbeam Imp	998
219	David Lawson	Hillman Imp	998
220	Anthony Coleman	Ford Anglia	997
222	W. G. Shepherd	Austin A40	997
223	W. H. Stephens	Standard 8	964
224	Raymond Cole	Morris Mini	848
225	Richard Pimkett	Morris Mini	848
227	A. H. Johnson (Dvr.: Graham Jackson)	Austin Mini	848
228	W. G. Shepherd (Dvr.: R. G. Shepherd)	Austin Mini	848
229	Adrian Webb	Hillman Imp	848
Reserves			
202	Nick Waterhouse (1st Reserve)	Austin Mini-Cooper 'S'	999
203	Richard Ellice (2nd Reserve)	Austin Mini-Cooper 'S'	999
200	Stuart White (3rd Reserve)	Austin Mini-Cooper 'S'	999

RESULTS

1st.....	2nd.....	3rd.....
4th.....	5th.....	6th.....

Fastest Lap by Car No..... Time..... Speed.....

LAP RECORDS

Special Saloon Cars — 851 - 1000 cc	secs	mph	date
Bernard Unett (998 cc Hillman Imp)	58.0	76.97	26.12.67
Race Record: Bernard Unett (998 cc Hillman Imp)		73.85	12.11.67
Special Saloon Cars — Up to 850 cc	secs	mph	date
Keith Holland (843 cc Hillman Fraser Imp)	59.8	74.65	9.6.68
Race Record: Keith Holland (843 cc Hillman Fraser Imp)		72.30	9.6.68

33 34 + 52.2
37 2
100 36 3

EVENT 5 Start: 4.40 p.m. 10 Laps

**Formule Libre Yazaki
Championship Race**

FOR SINGLE-SEATER RACING CARS AND SPORTS-RACING CARS
OF UNLIMITED CAPACITY

and Scratch Race

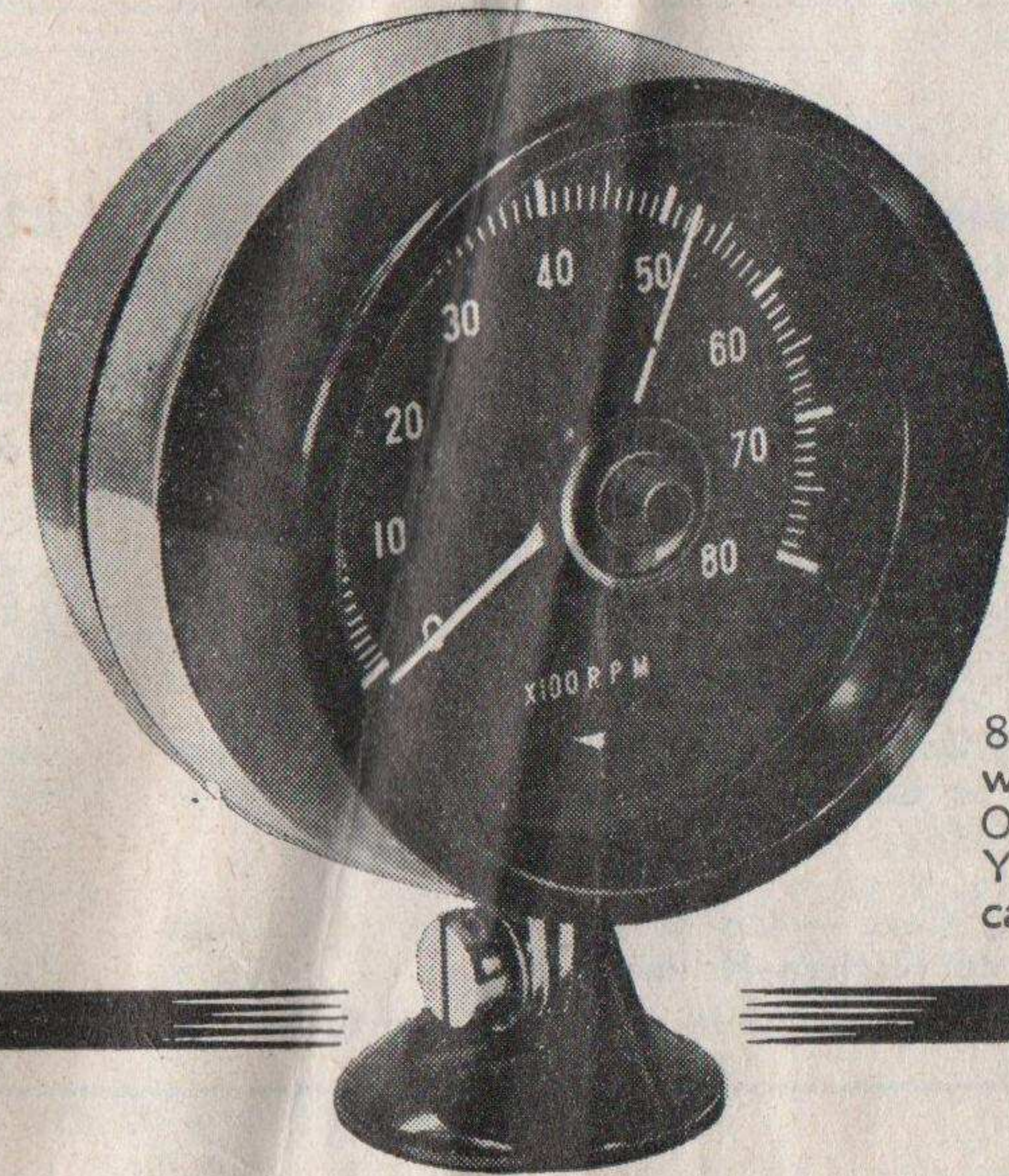
FOR SPECIAL GRAND TOURING CARS AS DEFINED BY THE BRSCC

No.	Entrant and Driver	Car	cc
Class A — Formule Libre Cars			
4	Christopher Winslow (Dvr.: Peter Coston)	Lotus	1598
20	Don L. Wilson	Russell-Alexis ...	1598
33	Clive Lacey	Brabham-Climax	2751
35	Paul Craven	Repco Brabham-Ford	997
36	Jeff Holdrup	Repco Brabham-Ford	997
37	Peter Deal	Repco Brabham-Ford	997
38	Mike Watkins	Repco Brabham-Ford	997
39	P & M Racing Preparations Ltd. (Dvr.: Brendon McNerney)	Repco Brabham-Ford	997
40	Frank Williams (Racing Cars) Ltd. (Dvr.: Tony Trimmer)	Repco Brabham-Ford	997
44	David Santer	Takhos-Imp ...	997
Class B — Special Grand Touring Cars over 1150 cc			
101	Mrs. Wendy Hamblin (Dvr.: Keith Hamblin)	AC Cobra	4727
105	Andy Sutcliffe	Ginetta GT ...	1594
107	Tony Beeson	Lotus GT ...	1594
108	Jim Baldwin	Lotus Elan ...	1594
110	Les Aylott	Lotus Eleven Le Mans	1594
111	Robert Kulaas	Lotus GT ...	1558
Class C — Special Grand Touring Cars up to 1150 cc			
115	Malcolm Sears	Austin Healey Sebring Sprite	1149
116	John Anderson	Diva GT ...	1098
118	A. Pearce	Concord GT ...	1098
119	Ray Watson	Sheldon GT ...	998
Reserves			
34	Alan Fraser (Dvr.: Tony Lanfranchi) (1st Reserve)	Repco Brabham-Ford	997
100	Andrew Cox (2nd Reserve)	Ford GT40 ...	4727
109	Andrew Cox (Dvr.: David Sullivan) (3rd Reserve)	Lotus Elan ...	1594
32	Max Mosley (4th Reserve)	Repco Brabham-Ford	1598

RESULTS

Overall	1st.....	2nd.....	3rd.....	Winner's Time.....	Speed.....
Class A	1st.....	2nd.....	3rd.....	Winner's Time.....	Speed.....
	Fastest Lap by Car No.....	Time.....	Speed.....		
Class B	1st.....	2nd.....	3rd.....	Winner's Time.....	Speed.....
	Fastest Lap by Car No.....	Time.....	Speed.....		
Class C	1st.....	2nd.....	3rd.....	Winner's Time.....	Speed.....
	Fastest Lap by Car No.....	Time.....	Speed.....		

Continued on Page Twelve



80 mm Tachometer
with cowl £12. 19. 6.
One of the range of
Yazaki instruments you
can trust.

YAZAKI

**Formule Libre
Championships
Brands Hatch 1968**

**SPONSORED BY
TIME INSTRUMENT
MANUFACTURERS LTD.**

Automobile Instrument Division
928 High Road, Finchley, London, N. 12
01-445 0491

Write for illustrated literature
'Take Miss Yazaki for a Drive'
and full details of the Yazaki range of instruments

Event Five Continued

LAP RECORDS

Formule Libre	secs	mph	date
Roy Pike (997 cc Titan Ford)	51.2	87.19	19.5.68
Race Record: Tony Lanfranchi (997 cc Repco-Brabham-Ford BT21)	85.85		21.7.68
Special Grand Touring Cars — Over 2500 cc	secs	mph	date
Clive Lacey (2751 cc Courtenay-Brabham-Climax BT8)	53.6	83.28	9.6.68
R. Record: Clive Lacey (2751 cc Courtenay-Brabham-Climax BT8)	81.31		9.6.68
Special Grand Touring Cars — 1601 - 2500 cc	secs	mph	date
Roger Nathan (1991 cc Nathan BMW GT)	53.6	83.28	19.5.68
Race Record: Roger Nathan (1991 cc Nathan BMW GT)	81.16		19.5.68
Special Grand Touring Cars — 1151 - 1600 cc	secs	mph	date
Trevor Taylor (1594 cc Lotus-Ford 47)	53.8	82.97	3.3.68
Race Record: John Miles (1594 cc Lotus-Ford 47)	80.43		10.9.67
Special Grand Touring Cars — Up to 1150 cc	secs	mph	date
Roger Nathan (998 cc Nathan-Hillman GT)	55.6	80.29	28.4.68
Race Record: Roger Nathan (998 cc Nathan-Hillman GT)	78.39		28.4.68

Yazaki Formule Libre Championship

The 1968 Yazaki Formule Libre Championship is sponsored by Yazaki, the Japanese motor car instrument company, through Time Instrument Manufacturers Ltd of North London, for selected club events at Brands Hatch and Snetterton.

The overall winner, regardless of class, receives £100 and the second and third men £75 and £50 respectively.

Competitors score automatically as follows: 1st place, 9 points; 2nd, 6; 3rd, 4; 4th, 3; 5th, 2; and 6th, 1.

Next three rounds:

September 2	BARC Tootal Trophy Races	Snetterton
September 22	S & DMC clubman's races	Brands Hatch
November 3	SSMC clubman's races	Brands Hatch

Current points position:

1	Tony Lanfranchi	...	1.0	Merlyn-Ford Mk 10 and Brabham-Ford BT21	42	pts.
2	Richard Shardlow	...	2.0	Chevron-BMW GT	14	"
3	Alex Trotter	...	1.0	Brabham-Ford BT21B	13	"
4	Clive Lacey	...	2.7	Courtenay-Brabham-Climax BT8	12	"
5	Peter Welstead	...	1.0	Lotus-Ford 41	11	"
6	Jeff Holdrup	...	1.0	Brabham-Ford BT21	10	"
7	Tim Schenken	...	1.0	Chevron-Ford	9	"
	Richard Burton	...	1.0	Brabham-Ford BT21B	9	"
9	John Epton	...	1.0	Brabham-Ford BT21B	6	"
	Tetsu Ikuzawa	...	1.0	Brabham-Ford BT21B	6	"
11	Jim Donnelly	...	3.8	Jaguar E-type	4	"
	Mike Beuttler	...	1.0	Brabham-Ford BT21	4	"
	Brian Newton	...	1.0	Tecno-Ford	4	"
	Peter Deal	...	1.0	Brabham-Ford BT18	4	"

EVENT 6 Start: 4.50 p.m. 10 Laps

Scratch Race

FOR SPECIAL SALOON CARS OVER 1000 cc

No.	Entrant and Driver	Car	cc
Class A — Over 1300 cc			
151	Pat Mannion	Ford Anglia	1798
152	Zekia Redjep	Ford Anglia	1798
154	Richard Scantlebury	Ford Anglia	1674
155	Brian Leonard	Ford Anglia	1650
157	Davide Bertorelli	Ford Anglia	1594
158	John Cole	Ford Anglia	1594
160	Terry Cockerell	Ford Anglia	1558
161	Mick Tamplin	Ford Anglia	1498
163	Roger Finch (Dvr.: Ian Starkey)	Ford Cortina Lotus	1558
Class B — 1001 cc to 1300 cc			
171	John Bloomfield	Ford Escort GT	1297
172	John Catchpole	Ford*Anglia	1297
174	Leonard Ward (Dvr.: John Bischoff)	Morris Mini-Cooper 'S'	1293
175	A. Knight	Morris Mini-Cooper 'S'	1293
176	Arthur van Dedem	Austin Mini-Cooper 'S'	1293
177	T. Dixon (Dvr.: R. Thornton)	Austin Mini-Cooper 'S'	1275
178	Paul Bayley	Austin Mini-Cooper 'S'	1275

RESULTS

Overall	1st.....	2nd.....	3rd.....	Winner's Time.....	Speed.....
Class A	1st.....	2nd.....	3rd.....	Winner's Time.....	Speed.....
	Fastest Lap by Car No.....		Time.....	Speed.....	
Class B	1st.....	2nd.....	3rd.....	Winner's Time.....	Speed.....
	Fastest Lap by Car No.....		Time.....	Speed.....	

LAP RECORDS

Special Saloon Cars — Over 1300 cc	secs	mph	date
Roger Taylor (1820 cc Ford Anglia)	56.8	78.59	26.12.67
Race Record: Alan Mann (4986 cc Ford Falcon Sprint)	76.52		26.12.67
Special Saloon Cars — 1001 - 1300 cc	secs	mph	date
Tony Lanfranchi (1001 cc Hillman Imp)	57.8	77.23	21.1.68
David Alexander (1293 cc Austin Mini-Cooper S)	57.8	77.23	3.3.68
Race Record: Tony Lanfranchi (1001 cc Hillman Imp)	75.61		11.2.68

test your car and your skill

on one of Britain's leading race-tracks

BY JOINING: Brands Hatch Motor Club
Snetterton Motor Racing Club
Mallory Park Motor Club



For 2 or 3 guineas a year you can experience something new in Motor Club enjoyment



Join to-day

For 3 gns. a year (2 gns if a BRSCC member) you can enjoy all the advantages described. (Track membership.) For 2 gns. a year you can enjoy all the advantages described, except drive on the tracks and skid roads. (Social membership.) Each circuit car club has its own distinctive emblem which is reproduced on transfers, car and lapel badges, and on club ties.

How to Join

Complete the application form below and send it, with your remittance to:

The Secretary:
Brands Hatch Motor Club, c/o Brands Hatch Circuit Ltd., Fawkham, Dartford, Kent.
Tel: West Ash 331

The Secretary:
Mallory Park Motor Club, c/o Mallory Park Circuit Ltd., Kirkby Mallory, Leicester.
Tel: Earl Shilton 3306

The Secretary:
Snetterton Motor Racing Club, c/o Snetterton Circuit Ltd., Norwich, Norfolk. NOR 10 X.
Tel: Quidenham 303

Your membership card and further details concerning track use and season brochures will be forwarded immediately



drive on a race-track

When you join a circuit car club you will be sent three tickets each entitling you to 20 laps driving your own silenced road car round the Brands Hatch, Snetterton and Mallory Park race tracks. All three circuits are open for this purpose on Tuesday and Thursday evenings each week during the summer, and on certain weekend days throughout the year. Each track is properly supervised and now has permanent catering services. Members are covered automatically by legal liability insurance and low-cost personal accident insurance is available as an optional extra.



drive on a skid-road

You also receive three more tickets, each entitling you to a weekend practice session on the Brands Hatch skid road, built specially for the High Performance Course of the British School of Motoring. In your own car you can spin safely on the special mastic surface through 360 degrees from only 20 m.p.h.



cheaper spectating

You can also purchase at a guinea less than the public rates, low-cost car race spectator season brochures for yourself, one other male, and up to four ladies, at one or all of the three circuits involved. These admit your car to any public park and all brooch holders to the paddock at Mallory and Snetterton and any normal viewing area. At Brands Hatch a season brooch costs 5 gns. for adult males, and 4 gns. only for ladies. At Mallory Park the brochures cost 4 gns. for males and 3 gns. for ladies. At Snetterton 3 gns. for males and 2 gns. for ladies.



enjoy a clubhouse

Close to the paddock at Brands Hatch and Snetterton, and to the hairpin at Mallory Park, members have their own modern-style motoring pubs and clubhouse. They are open on regular weekday evenings, and on all practice and race days. Apart from their attractive bars, set against a background of motor badges and paintings, the clubhouses are also equipped with music and amusements. They are also the scene of film shows, dances and cocktail parties.



member of three

Membership of any one circuit car club allows you and up to three guests to use the clubhouses at Mallory Park, Snetterton and Brands Hatch. Similarly, members of any one circuit car club are also automatically members of the other two, and are entitled to exchange skid-road and race-track tickets (when applicable), to use the other facilities at concession rates, and to enjoy full Clubhouse privileges.



your own year book

Through the post each December—or immediately if you join while stocks last—you will receive a bound copy of *Motor Racing Year* (post free value 22/6). This splendid production, edited by the staff of the magazine *Motor Racing* reviews the previous year's racing scene and is packed with motor sport data and exclusive hitherto unpublished photographs.

In addition, regular news letters will keep you informed of club news, facilities and social events.



drive again at 70 plus

As a member of a circuit car club you can again extract the maximum in speed and roadholding from your car. At Brands, Mallory and Snetterton you can enjoy real performance on roadways designed to bring out the best in driving skill and engineering. And you can do so within safety barriers, wide run-offs and without the risk of oncoming traffic. And afterwards—you can relax in the clubhouse with people with interests just like yours.

FULL MEMBERSHIP APPLICATION FORM

Dear Sir,

Please enrol me as a member of the: Brands Hatch Motor Club, The Snetterton Motor Racing Club, The Mallory Park Motor Club. Please also send me the following:

- £ s. d.
-ties (green, blue, maroon) at 17s. 6d. each
 -lapel badges (pin) at 3s. 6d. each
 -car badges at £1 5s. each
 -3 in. transfers a: 1s. each

I also enclose:

- 3 gns. for twelve months track membership
- 2 gns. for twelve months social membership

TOTAL £

(Delete the inapplicable.)

Please make your cheque payable to the club of your choice.

Name

Address

Tel:

LAP SPEED TABLE

BRANDS HATCH SPEED TABLE 1 LAP = 1.24 MILES

Time secs	Speed mph	Time secs	Speed mph	Time secs	Speed mph	Time secs	Speed mph	Time secs	Speed mph	Time secs	Speed mph
48.0	93.00	53.0	84.23	58.0	76.97	63.0	70.86	67.0	66.63	71.0	62.87
48.2	92.61	53.2	83.91	58.2	76.70	63.2	70.63	67.2	66.43	71.2	62.70
48.4	92.23	53.4	83.60	58.4	76.44	63.4	70.41	67.4	66.23	71.4	62.52
48.6	91.85	53.6	83.28	58.6	76.18	63.6	70.19	67.6	66.04	71.6	62.35
48.8	91.48	53.8	82.97	58.8	75.92	63.8	69.97	67.8	65.84	71.8	62.17
49.0	91.10	54.0	82.67	59.0	75.66	64.0	69.75	68.0	65.65	72.0	62.00
49.2	90.73	54.2	82.36	59.2	75.41	64.2	69.53	68.2	65.45	72.2	61.83
49.4	90.36	54.4	82.06	59.4	75.15	64.4	69.32	68.4	65.26	72.4	61.66
49.6	90.00	54.6	81.76	59.6	74.90	64.6	69.10	68.6	65.07	72.6	61.49
49.8	89.64	54.8	81.46	59.8	74.65	64.8	68.89	68.8	64.88	72.8	61.32
50.0	89.28	55.0	81.16	60.0	74.40	65.0	68.68	69.0	64.70	73.0	61.15
50.2	88.92	55.2	80.87	60.2	74.15	65.2	68.47	69.2	64.51	73.2	60.98
50.4	88.57	55.4	80.58	60.4	73.91	65.4	68.26	69.4	64.32	73.4	60.82
50.6	88.22	55.6	80.29	60.6	73.66	65.6	68.02	69.6	64.14	73.6	60.65
50.8	87.87	55.8	80.00	60.8	73.42	65.8	67.84	69.8	63.95	73.8	60.49
51.0	87.53	56.0	79.71	61.0	73.18	66.0	67.64	70.0	63.77	74.0	60.32
51.2	87.19	56.2	79.43	61.2	72.94	66.2	67.43	70.2	63.59	74.2	60.16
51.4	86.85	56.4	79.15	61.4	72.70	66.4	67.23	70.4	63.41	74.4	60.00
51.6	86.51	56.6	78.87	61.6	72.47	66.6	67.03	70.6	63.23	74.6	59.84
51.8	86.18	56.8	78.59	61.8	72.23	66.8	66.83	70.8	63.05	74.8	59.68
52.0	85.85	57.0	78.32	62.0	72.00						
52.2	85.52	57.2	78.04	62.2	71.77						
52.4	85.19	57.4	77.77	62.4	71.54						
52.6	84.87	57.6	77.50	62.6	71.31						
52.8	84.55	57.8	77.23	62.8	71.08						

$$\text{SPBED (IN MPH)} = \frac{1.24 \times 3600 \times \text{No. of laps}}{\text{TIME (in seconds)}}$$

For full details of advertising in Brands Hatch programmes write or telephone the

Advertisement Manager : **Knightsbridge Publications, (1962) Limited**

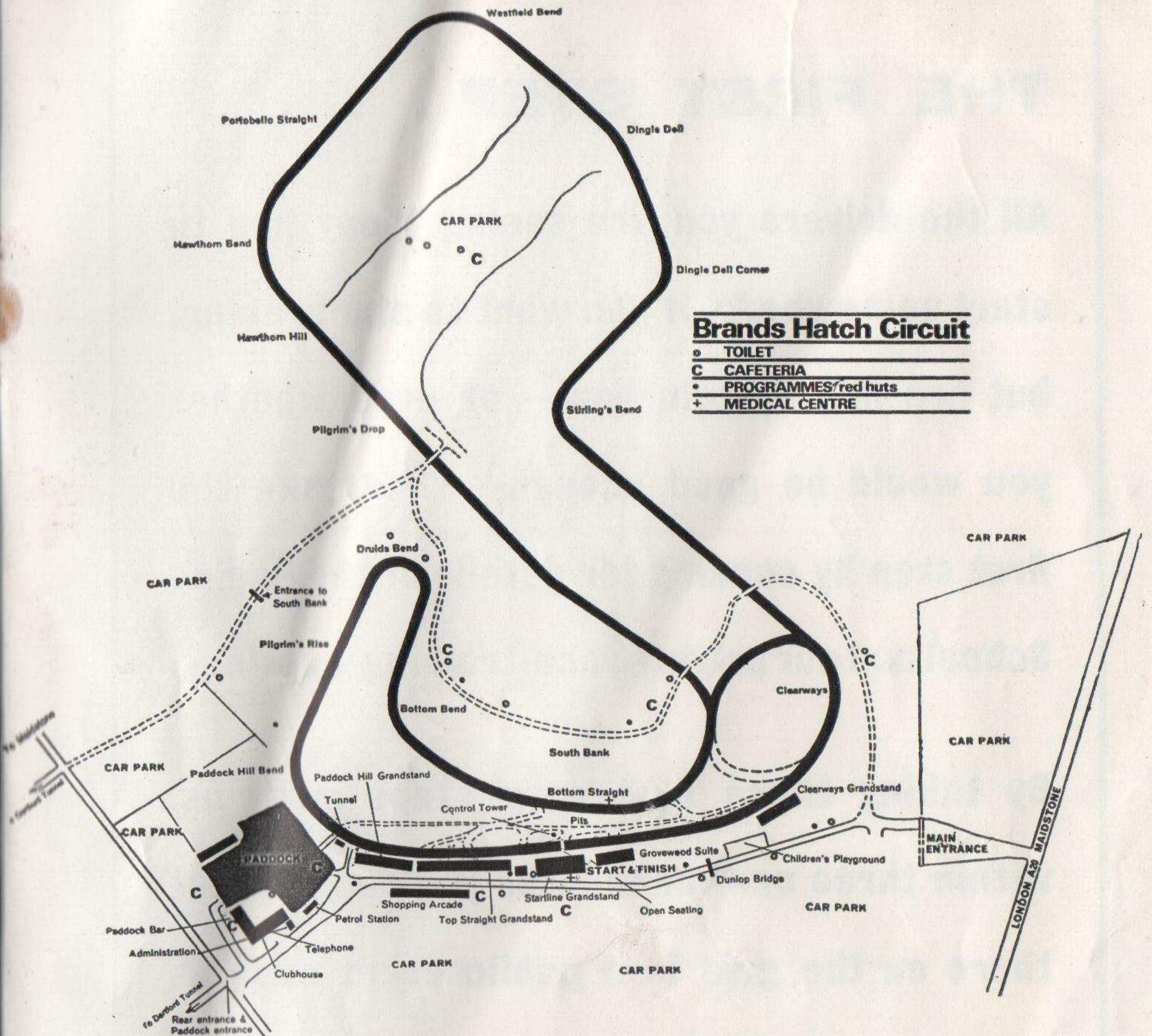
Summit House,
Glebe Way,
West Wickham, Kent.
Tel. 777 6735/8

SPORTS CAR INSURANCE

Consult us for motor Insurance at competitive premiums.
Life or Endowment Assurance to include motor racing

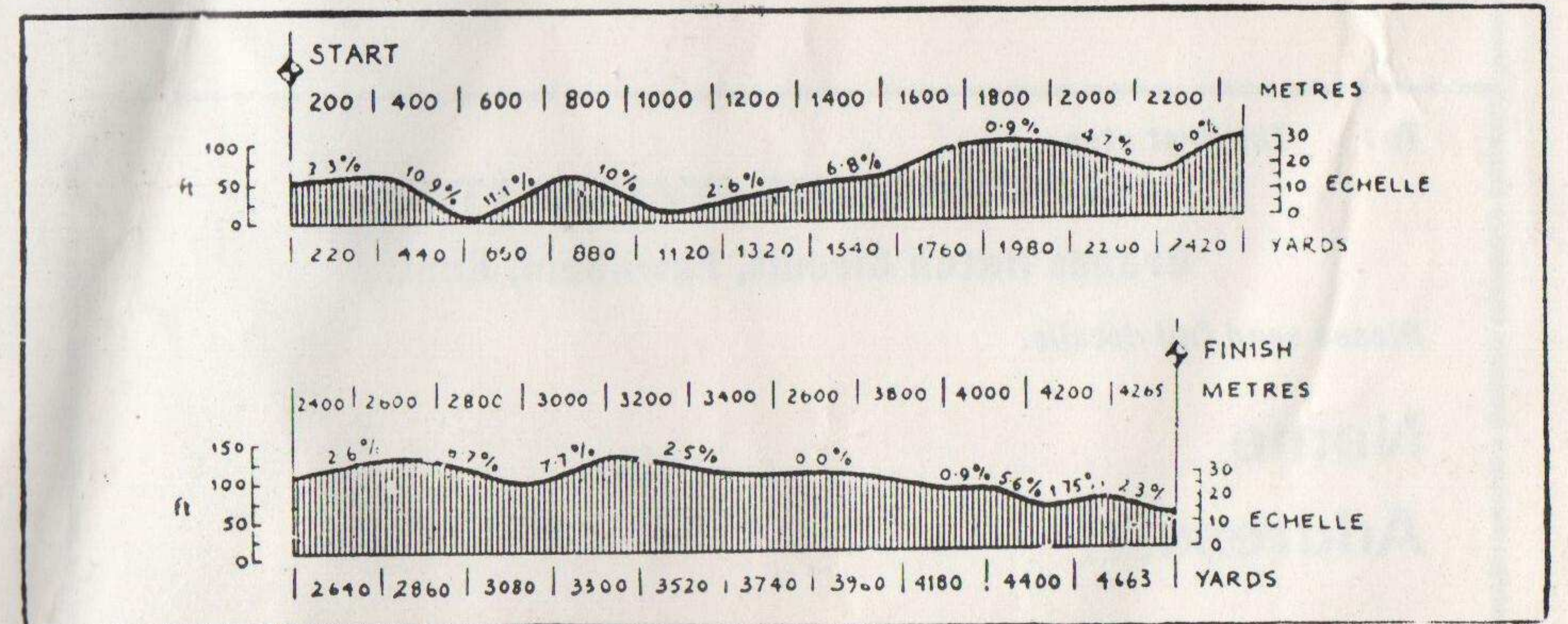
NORTH LONDON RELIANCE (INSURANCES) LTD.

158, High Road, East Finchley, London, N.2 Tel 01-883 1198



GRAND PRIX CIRCUIT 2.65 Miles

CLUB CIRCUIT 1.24 Miles



THE SHORT 1.24 MILE CIRCUIT ONLY IS IN USE FOR THIS MEETING

Published for Motor Circuit Developments Ltd.
by Knightsbridge Publications (1962) Ltd.
Printed by Craig Mitchell & Co., London, N.7.

THE FIRST STEP . . .

All the drivers you are seeing today had to start somewhere. If you want to start racing, but are not certain how — or even whether you would be good enough — then take the first step by sending for details of the Racing School and our private race-training meetings.

By taking these first easy steps with us, within three or four months you could be out there on the grid in a public event such as you are seeing today.

To: The first step . . .

MOTOR RACING STABLES LTD.

Brands Hatch Circuit, Fawkham, Kent.

Please send full details.

Name

Address

25/8/BH