

SUNDAY 8th OCTOBER 1967

Programme 2s 6d

# BRANDS HATCH

The Les Leston Grand Prix Circuit Races

Organised by the BRSCC for Brands Hatch Circuit Ltd.

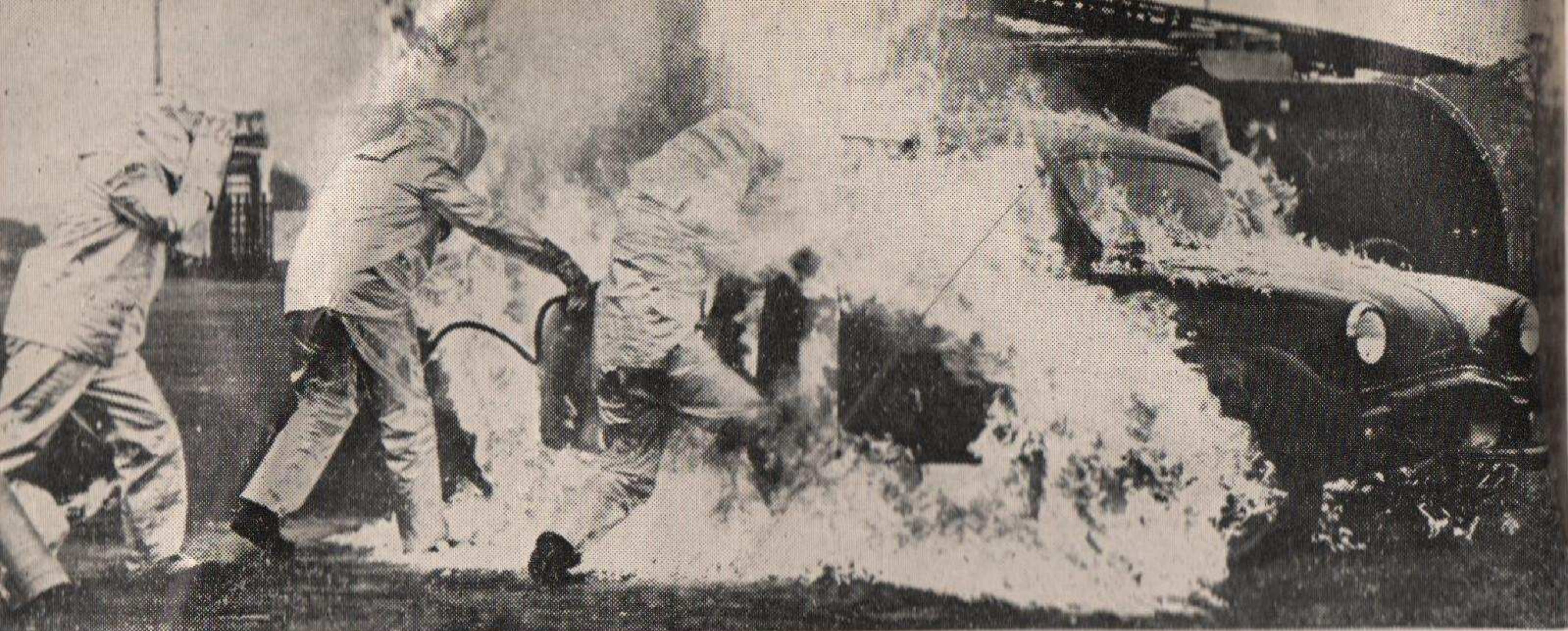


# Autocar

FIRST AWAY AND  
ALWAYS AHEAD

THURSDAY 2s





# TBA Aluminised Asbestos Cloth in action!

At this meeting and all major meetings this season, the TBA mobile service team will be in action. All fire marshals will be protected by TBA Aluminised Asbestos Cloth.

This material is tailor-made for the job. The shiny-silver, reflective surface gives wearers maximum protection against very high temperatures, enabling them to enter the actual flame zones for limited periods. It's also lightweight, flexible, and resistant to oil, petrol and molten-metal splashes. Tailors nicely too.

Fire is an ever-present danger in motor racing, but TBA Aluminised Asbestos Cloth is doing much to reduce the hazards involved in rescue and extinguishing operations at meetings all over the country.

Wearing their suits of TBA Aluminised Asbestos Cloth, firemen from the Cheshire County Fire Service dash in to make a mock rescue at a recent Oulton Park meeting.

Manufacturers of fire-protective clothing who use TBA Aluminised Asbestos Cloth:  
**Bell's Asbestos & Engineering Co. Ltd., Slough, Bucks**  
**Croydon Asbestos Co. Ltd., Redhill, Surrey**  
**George Angus & Co. Ltd., Newcastle upon Tyne**  
**Wathen Gardiner & Co. Ltd., Bristol**

AND THERE'S MORE TO

# TBA

THAN ASBESTOS

#### BELTING

Conveyor and power transmission belting

#### GLASS FIBRE

TBA glass-fibre textiles and reinforcement materials

#### MOULDING MATERIALS

Duraform asbestos-reinforced thermoplastics  
 Durestos asbestos-reinforced moulding materials

#### ASBESTOS

Asbestos textiles, packings, jointings, millboard and P.T.F.E.

Turner Brothers Asbestos Co. Ltd. Rochdale England

Telephone: Rochdale 47422

Telex: 63174

A Turner & Newall Company



A7

# BRANDS HATCH

Fawkham, nr. Dartford, Kent.

*This meeting is held under the International Sporting Code, the General Competition Rules and Standing Supplementary Regulations of the RAC, and Supplementary Regulations.*

RAC Permit No. RS.2881.

**Sunday 8th October 1967**

## BRSCC Les Leston Grand Prix Circuit Races

RACES FOR FORMULA 3, FORMULA FORD, SPORTS-RACING,  
SPECIAL GT, MARQUE SPORTS AND SPECIAL SALOON CARS

### OFFICIALS

#### Stewards :

For the RAC — K. W. Bickle  
 For the BRSCC — F. H. Bacon  
 P. M. Jopp L. Leston

#### Judges :

G. Lee L. Lewis-Evans  
 B. L. O'Hara R. M. Wilson

**Clerk of the Course and  
 Secretary of the Meeting :**  
 N. Syrett

#### Race Control :

B. H. Crow Mrs. B. H. Crow  
 P. Morley Miss D. Lang  
 Miss S. Whythe Miss S. Winslade

#### Timekeepers :

C. Audrey G. Barritt  
 H. Clenshaw M. Ayre  
 A. Nash L. Needham

#### Race Recorders :

Mrs. C. Audrey Miss P. Wallis

#### Scrutineers :

F. W. Harrison N. C. Croucher  
 R. C. Croucher F. W. Monk  
 G. T. Roussel K. B. Salmon

#### Scrutineers' Assistants :

Miss R. Martin R. King  
 P. Williams

#### Commentators :

A. Marsh N. Greenway

**Chief Marshal :** E. E. C. Goodman  
**Chief Observer :** H. G. Webley  
**Chief Flag Marshal :** M. L. Terrell  
**Chief Paddock Marshal :** H. W. Lamkin  
**Starter :** C. Greville-Smith  
**Chief Start-Line Marshal :** L. T. Smith  
**Chief Pit Marshal :** A. Peers-Jones  
**Chief Results Board Marshal :**  
 C. Willoughby

**Chief Fire Officer :** A. G. C. Hyder

#### Rescue Service :

P. H. Copper D. A. Southwood

#### Medical Officers :

Dr. F. Cramer Dr. K. Walker  
 Dr. C. L. Baker Dr. R. Bown  
 Dr. D. D. Craig Dr. P. Flintan  
 Dr. T. Morley Dr. M. Radzan  
 Dr. J. J. Schofield Mr. A. Watts  
 Dr. P. J. Wise Dr. D. K. Williams

#### Medical Services :

St. John Ambulance Brigade

#### Marshals :

Members of the BRSCC

**Press Officer :** M. D. Kettlewell

#### Promoted by :

#### MOTOR CIRCUIT

**DEVELOPMENTS LTD.**

**Managing Director :** John Webb  
**For BRANDS HATCH CIRCUIT LTD :**  
**General Manager :** C. J. D. Lowe

This meeting is organised by . . .

**The British Racing & Sports Car Club**  
**Empire House, Chiswick High Road, W.4**

#### COVER PHOTOGRAPH

A gaggle of F3 cars stream away from Druids Hairpin, with Mo Nunn leading the way in his red Cosbay-engined Lotus 41; tight racing so typical of the Formula.

*(Photograph by Michael R. Hewett)*



## WARNING

Persons attending at this meeting do so entirely at their own risk. It is a condition of admission that all persons having any connection with the promotion and/or organisation and/or conduct of the meeting, including the owners of the land and drivers and owners of the vehicles and passengers of the vehicles are absolved from all liability arising out of accidents causing damage and/or personal injury to spectators.

## FLAG SIGNALS

<b>UNION JACK</b> .....	Start.
<b>RED</b> .....	Stop immediately.
<b>YELLOW (Waved)</b> .....	Great Danger : prepare to stop.
<b>YELLOW (Motionless)</b> .....	Take care : danger.
<b>BLUE (Waved)</b> .....	Another competitor is trying to overtake.
<b>BLUE (Motionless)</b> .....	Another competitor is following closely.
<b>YELLOW WITH RED STRIPES</b> .....	Oil on the course.
<b>WHITE</b> .....	Ambulance or service car on the course
<b>BLACK (with number)</b> .....	Car with that number must call into the pits
<b>BLACK and WHITE CHEQUERED</b> .....	End of race.

## For the Attention of Spectators

Please do not leave litter about the grounds — take it with you.  
 The British Racing & Sports Car Club acknowledge with thanks the valuable assistance given by the individual marshals in conducting this event.  
 If an accident occurs, leave it to the marshals, the doctors and St. John Ambulance men who are in attendance.  
 Remember to drive with care and caution when leaving the ground.  
 To safeguard both competitors and public — **dogs are not admitted unless kept on a leash. This is most important.**  
**Prohibited Area Notices** — The public are not permitted in the areas where these notices are displayed. The fences are there for protection, and any person or persons found trespassing, or wilfully damaging trees, fences, etc., will be prosecuted by Brands Hatch Circuit Ltd.

## Acknowledgements

The Official Course Cars have been kindly made available by  
**THE FORD MOTOR COMPANY**  
 DUPLICATOR kindly supplied by **RONEO LTD.**  
 CARAVAN kindly loaned by **WILSON'S CARAVANS LTD.**

## Condition of Admission

*Spectators attending the track do so entirely at their own risk. It is a condition of admission that the Brands Hatch Circuit Limited and all persons having any connection with the promotion and/or organisation and/or conduct of the meeting (including the drivers and owners of vehicles and passengers in vehicles) are absolved from all responsibility and liability whatsoever from negligence, or by accident causing loss, damage or personal injury to spectators or ticket-holders, or to their goods or vehicles.*

## Postponement of the Meeting

*The Club reserves the right to postpone or cancel the meeting.*

## Programme of Events

		Laps	Start
<b>EVENT 1</b>	<b>THE GUARDS CHAMPIONSHIP RACE</b> ... .. For Sports-Racing Cars A qualifying round for the 1967 Guards Sports Car Championship	10	2.00 pm
<b>EVENT 2</b>	<b>THE MOTORING NEWS CHAMPIONSHIP RACE</b> ... .. For Special Grand Touring Cars as defined by the BRSCC A qualifying round for the Motoring News Special Grand Touring Car Championship	10	2.40 pm
<b>EVENT 3</b>	<b>THE REDEX GOLD CROSS CHAMPIONSHIP RACE 'B'</b> ... .. For Special Saloon Cars with an engine capacity not exceeding 1000 cc A qualifying round for the 1967 Redex Gold Cross Saloon Car Championship	10	3.20 pm
<b>EVENT 4</b>	<b>FORMULA FORD RACE</b> ... ..	10	4.00 pm
<b>EVENT 5</b>	<b>THE AMASCO TROPHY RACE</b> ... .. For Marque Sports Cars as defined by the BRSCC A qualifying round for the 1967 Amasco Marque Production Sports Car Championship	10	4.40 pm
<b>EVENT 6</b>	<b>THE LES LESTON CHAMPIONSHIP RACE</b> ... .. For Single-Seater Racing Cars complying with the FIA International Formula 3 A qualifying round for the 1967 Les Leston Formula 3 Championship	10	5.20 pm
<b>EVENT 7</b>	<b>THE REDEX GOLD CROSS CHAMPIONSHIP RACE 'A'</b> ... .. For Special Saloon Cars with an engine capacity exceeding 1000 cc A qualifying round for the 1967 Redex Gold Cross Saloon Car Championship	10	6.00 pm

## Awards

<b>EVENT 1</b>	Overall Winner—£20 In each class, except Overall Winner : 1st—£15 2nd—£10 3rd—£5
<b>EVENT 2</b>	Overall Winner—£20 In each class, except Overall Winner : 1st—£15 2nd—£10 3rd—£5
<b>EVENT 3</b>	Overall Winner—£20 In each class, except Overall Winner : 1st—£15 2nd—£10 3rd—£5
<b>EVENT 4</b>	1st—£20 2nd—£10 3rd—£5
<b>EVENT 5</b>	Overall Winner—£20 In each class, except Overall Winner : 1st—£15 2nd—£10 3rd—£5
<b>EVENT 6</b>	1st—£20 2nd—£15 3rd—£10 4th—£5
<b>EVENT 7</b>	Overall Winner—£20 In each class, except Overall Winner : 1st—£15 2nd—£10 3rd—£5

## Starting Positions

Grid positions in all races will be determined by the Competitor's Lap Times, recorded by the Official Timekeeper during Practice.



# PADDOCK GOSSIP

A brief round-up of some of the latest motor racing news

**For the second** and last time this year, Brands Hatch regular band of club drivers have an opportunity of motor racing on the 2.65-mile Grand Prix circuit. The British Racing & Sports Car Club, who organise today's Les Leston Grand Prix Circuit races, received an overwhelming number of applications from prospective entrants and several have had to be disappointed.

The majority of today's dicers know the 1.24-mile club short circuit intimately, but not all are familiar with the GP circuit extension. A different line is needed through South Bank Bend, which leads competitors on to the very long and undulating straight towards Hawthorn Bend. After this right hander a short straight takes drivers to another right, Westfield Bend. A sharp burst of speed to Dingle Dell, one of the trickiest parts of the circuit which has caught out even top-liners, and then the difficult left-hand Stirling's Bend takes competitors on to another straight which links back to the old circuit at Clearways.

**Today's meeting** is named after Les Leston, the ex-racing driver from London who runs a thriving motor accessory business in London. Les also sponsors the Les Leston Formula 3 Championship for club meetings at Brands Hatch, Mallory Park, Oulton Park and Snetterton, and today's meeting includes a championship race — Event 6.

Heading the list of entries — numbers 1 and 2 — are the two Repco-Brabham-Ford BT21s of the Charles Lucas Engineering team, to be driven by Charles Lucas himself and his business partner, Harry Stiller, who was last year's Leston champion and currently heads this year's points table. However, they will have to use every ounce of their undoubted skill and all the power of their special, potent motors to ward off the challenges expected from Japanese driver Tetsu Ikuwaza in the Motor Racing Stables-entered Repco-Brabham-Ford BT21, not to mention Mike Walker in a similar car entered by Frank Manning Racing. Mike is now recovered from a nasty-looking accident at Crystal Palace recently.

In Lotus-Ford 41s one must not discount John Miles with the works-sponsored white car, which features a distinctive "snorkel" over the carburettor intake, or Morris Nunn, the Midlander who runs his racing car on a limited budget. Another likely candidate for victory, of course, is the extrovert Yorkshire-born

Tony Lanfranchi with Ken Bass's Holbay-powered Merlyn Mk 10. Very underrated, Tony has considerable talent and is able to drive any car to its limit, from a 6-litre Lola-Chevrolet to one of Alan Fraser's Imps.

Two prototypes of future production Formula 3 single-seaters are also running in this race. Roy Pike drives Charles Lucas's Titan-Ford, which has already shown tremendous form since its first race in July, while Peter Gethin, one of Britain's most promising up-and-coming drivers, is to handle the Chevron-Ford in its first ever race.

**There are two** saloon car races on the programme, both rounds of the season-long Redex Gold Cross Championship. The first, for 1000 cc cars, brings together the ever-battling quartet of Bernard Unett driving a Fraser Imp, Alan Peer with a very quick Ford Anglia and David Morgan and Charles Carling with their very quick Minis entered by the Mini-Seven Club Racing Team. Not too far behind, if not mixing it right with them, will be Tony Taylor in his quick black and white Imp which he prepares himself and Lawrie Hickman with a rapid Ford Anglia.

The over 1000 cc race also includes a bundle of rapid machinery. Outright winner could be found from Terry Sanger with his 4.7-litre V8-powered Ford Cortina or from Roger Taylor or Norman Abbott with a pair of bored-out twin-cam Anglias. In the 1300 cc class — and not too far behind the big-class competitors either — there will be a right old tear-up between that closely-matched pair Ken Costello (Mini-Cooper S) and Alec Poole (Wolseley Hornet). "Cloth-cap" Costello currently leads the Redex Gold Cross Championship and is the hot favourite to score maximum points again today.

**In the Guards Championship** sports-racing car race which opens today's meeting the new overall leader, Croydon man Mike Fraser with his immaculately-presented Lola-Climax Mk 1, is entered to try to keep his narrow lead over Keith St. John, who pilots a 2-litre Elva-BMW Mk 7S. However, Fraser has tough opposition in the 1150 cc class in the shape of Jack Paterson's Lotus-Ford 23 and John Le Sage's Merlyn-Ford Mk 4A, while St. John, too, will not have it all his own way in the over 1150 cc class as Clive Lacey is down to drive his 2-litre Repco-Brabham-Climax BT8 while Max Mosley's clubman's U2-Ford Mk 6B is also a tough nut to crack.

## Guards Sports Car Championship

The 1967 Guards Sports Car Championship is sponsored by Carreras Ltd, the international cigarette company and makers of Guards cigarettes, for selected club events at Brands Hatch.

The overall winner, regardless of class, receives £100 and a silver cigarette box; the winner of the opposite class receives £50 and the runners-up in each of the two classes receives £25.

Competitors score automatically in two classes (up to 1150 cc and over 1150 cc) as follows: 1st place in each class, 4 points; 2nd, 3 pts; 3rd, 2 pts; 4th, 1 pt.

The remaining three championship races are:

November 12	S & DMC Sevenoaks Cup races ...	Brands Hatch
November 26	LMC November Cup races .....	Brands Hatch
December 26	BRSCC Lombank Trophy	Brands Hatch
	Boxing Day races	Brands Hatch

Points position to date is as follows:

Up to 1150 cc —			Over 1150 cc —		
1.	Mike Fraser ...	21 pts.	1.	Keith St. John ...	19 pts.
2.	Cameron Weller	15 "	2.	Clive Lacey ...	11 "
3.	John Horton ...	7 "		Max Mosley ...	11 "
	Trevor Twaites	7 "	4.	George Lewis ...	10 "
	John Nicholson	7 "	5.	Tony Beeson ...	4 "
6.	Rod Mansfield ...	4 "	6.	Tony Lanfranchi,	
7.	Alan Pearce ...	3 "		Peter Crossley,	
	Malcolm Flanders	3 "		Vic Payne, Ian Tee,	
				Paul Ellis,	
				Clarke Sturdgess,	
				Anthony Ward	
				Alan Fowler ...	3 "

## BRANDS HATCH 1967 FIXTURE LIST

DATE	EVENT	RACES	CHARGES
14 Oct.	BOBMC Clubman's M/Cycle Races	All Classes	7/6 A, CF, (R), 2/6 Pr
15 Oct.	Jaguar D.C. Clubman's Races	FL/S/GT/T	7/6 A, CF, (R), 2/6 Pr
22 Oct.	*Relay Motor Cycle Races	All Classes	10/-A, CF, (R), 2/6 Pr
28 Oct.	Practice for Oct. 29	T/F3/Historic	5/- A, CF, (R)
29 Oct.	*BARC INTERNATIONAL GUARDS MOTOR SHOW 200 CAR RACES	T/F3/Historic	15/- A, CF, 5/- OS, 10/0-15/-, 10/- P, 2/6 Pr
5 Nov.	Surrey Sporting M.C. Sprint	S/GT/T	3/6 A, CF, (R)
12 Nov.	Sevenoaks D.M.C. Sevenoaks Cup Car Races	FL/S/GT/T	10/-A, CF, (R), 2/6 Pr
19 Nov.	RCDMC Clubman's Car Races	FL/S/GT/T	7/6 A, CF (R), 2/6 Pr
26 Nov.	London M.C. November Cup Car Races	F3/S/GT/T	10/-A, CF, (R), 2/6 Pr
3 Dec.	East Surrey M.C. Sprint	S/GT/T	3/6 A, CF, (R)
10 Dec.	Mini-7 Club Car Races	F3/S/GT/T	10/-A, CF, (R), 2/6 Pr
17 Dec.	Lambretta Club Speed Trial	Scooters	No Charge
26 Dec.	BRSCC Lombank Trophy Boxing Day Car Races	F3/S/GT/T	10/-A, CF, 5/- OS, 7/6-12/6 S, 10/-P, 2/6 Pr

### KEY

\* On the 2.65 mile Grand Prix Circuit  
 A - Adults C - Children OS - Open Seats P - Paddock  
 Pr - Programme S - Covered Stands CF - Accompanied and  
 School Uniform Children Free. (R) - Stands and Paddock Free  
 (R\*) - Stock Car Grandstand 5/-, others free.

**Parking free at all Meetings.**  
 All the above information is given in good faith at the time of publication.

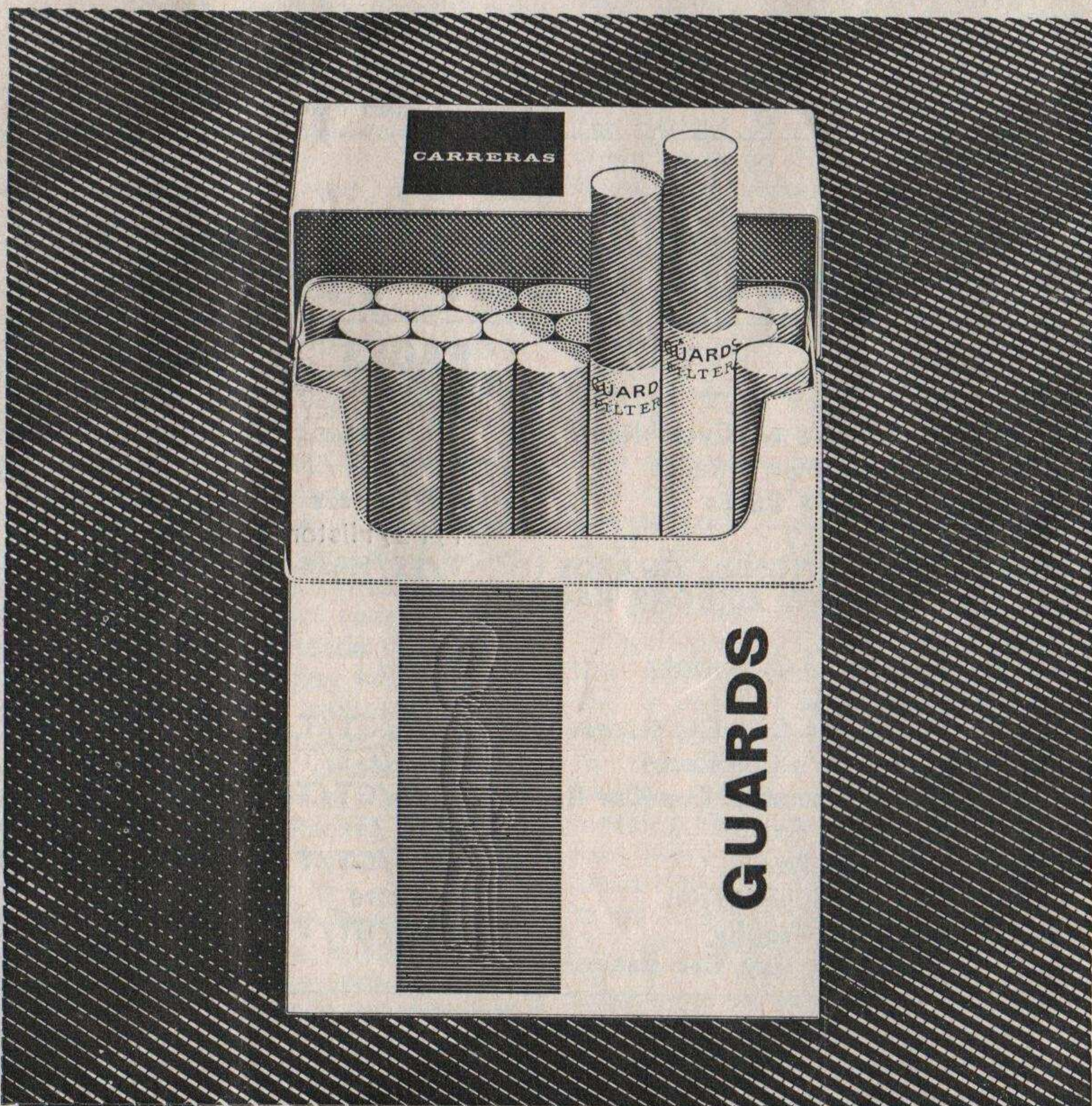


# GUARDS

## First in their class

Why? Because Guards are far and away the leading cigarette in their class. Out in front for flavour, quality and satisfaction. You join the leaders when you change to Guards.

Guards-Britain's leading cigarette  
at 4/3 for 20  
Fine rich Virginia... guaranteed gifts



84 82 78 76  
87 93 71  
92 74  
96 79 80

# EVENT I

START : 2.00 p.m. 10 LAPS

97 95 90  
94

## THE GUARDS CHAMPIONSHIP RACE

FOR SPORTS-RACING CARS

A qualifying round for the 1967 Guards Sports Car Championship

No.	Entrant and Driver	Car	cc
<b>Class A — Over 1150 cc</b>			
71	A. H. Knight	Lotus-Ford	4727
72	M. McGrath	Jaguar 'D' Type	3781
102	B. Croot	Allard-Jaguar	3442
73	Ken Sheppard C.S.C. Ltd. (Dvr.: K. J. St. John)	Elva-BMW	1991
74	P. Roberts	Elva-BMW	1991
76	C. Lacey	Brabham-Climax	1960
120	W. J. Tee (Dvr.: M. Twite)	Ginetta GT	1594
77	C. Sturdgess	Lotus-Ford	1498
78	T. Goss	Lotus-Ford	1498
79	M. G. Hofman	Lotus-Ford	1498
80	D. M. Whetter	Lotus-Ford	1498
82	Meadspeed Racing (Dvr.: M. Mosley)	U2-Ford	1498
<b>Class B — Up to 1150 cc</b>			
85	J. S. Paterson	Lotus-Ford	1149
87	M. P. R. Fraser	Lola-Climax	1149
89	J. P. Gray	Lola-Climax	1098
90	J. Le Sage	Merlyn-Ford	1098
91	A. W. Pearce	Concord-Ford	1098
92	J. Nicholson	Mercury-Ford	1098
93	Bernard Lewis Racing (Dvr.: K. Crook)	Lotus-Ford	1098
94	J. Corfield (Dvr.: Entrant or J. Plant)	Mercury-Ford	997
95	R. C. Savage	Milmor-BMC	997
96	C. D. Weller	Lotus-BMC	995
97	G. K. Wakeham	Lotus-BMC	995
98	T. A. Twaites	Mercury-Ford	1098

## RESULTS

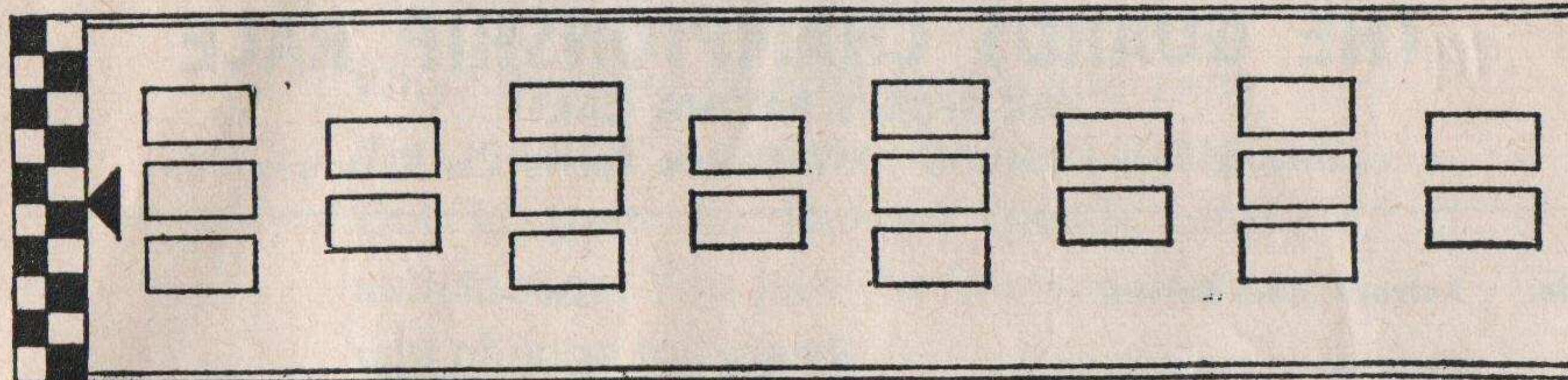
<b>Overall</b>	1st..... 76	2nd..... 78	3rd..... 77	4th..... 85
Winner's Time.....	17.56.0	Speed..... 88.66	mph	
<b>Class A</b>	1st..... 76	2nd.....	3rd.....	4th.....
Winner's Time.....	Speed.....	mph		
Fastest Lap by Car No.....	Time.....	Speed.....	mph	
<b>Class B</b>	1st..... 85	2nd..... 87	3rd..... 94	4th.....
Winner's Time.....	Speed.....	mph		
Fastest Lap by Car No.....	Time.....	Speed.....	mph	

(Grid positions and Lap Chart overleaf)



# GRID POSITIONS

EVENT ONE continued



POS.	1	2	3	4	5	6	7	8	9	10
1										
2										
3										
4										
5										
6										
7										
8										
9										
10										
11										
12										
13										
14										
15										
16										
17										
18										
19										
20										

## NOTES

## Motoring News GT Championship

The 1967 Motoring News GT Championship is sponsored by Motoring News, the weekly motor sporting newspaper, for selected club events at seven circuits.

The overall winner, regardless of class, receives £100 and a trophy and the winner of each of the other three classes £30. Second in each class receives £15 and third in each class £10. Competitors score automatically in four classes (up to 1150 cc, 1151 - 1600 cc, 1601 - 2500 cc and over 2500 cc) as follows: 1st place in each class, 4 points; 2nd, 3 pts; 3rd, 2 pts; 4th, 1 pt. Half points are awarded if fewer than four cars start in a class.

The remaining championship race is:

October 14 BRDC Clubman's Championship ..... Silverstone

Points position to date is as follows:

### Up to 1150 cc —

1. Paul Ridgway ...	33 pts.
2. Roger Nathan ...	23 "
3. Andrew Mylius ...	22 "
4. Mike Walton ...	21 "

### 1151 — 1600 cc —

1. John Lepp ...	50 pts.
2. John Miles ...	21 "
3. Phil Silverston ...	15 "
4. Malcolm Wayne ...	13 "

### 1601 — 2500 cc —

1. Peter Creasey ...	20½ pts.
2. Digby Martland ...	18 "
3. Derek Bennett ...	11 "
4. Brian Martin ...	6½ "

### Over 2500 cc —

1. Bob Vincent ...	21 pts.
2. Mike Greenwood ...	11 "
3. Ron Fry ...	10 "
4. Charles Bridges ...	7 "
Warren Pearce ...	7 "
John Woolfe ...	7 "

## VISIT THE BRANDS HATCH SHOPS

\* FORMULA FORD and RACING SCHOOL INFORMATION CENTRE

\* MOTOR CYCLING CLOTHING \* ACCESSORIES

\* BRANDS HATCH TRANSFERS, BADGES, PENCILS

\* MODELS, BOOKS, MAGAZINES AND FILMS

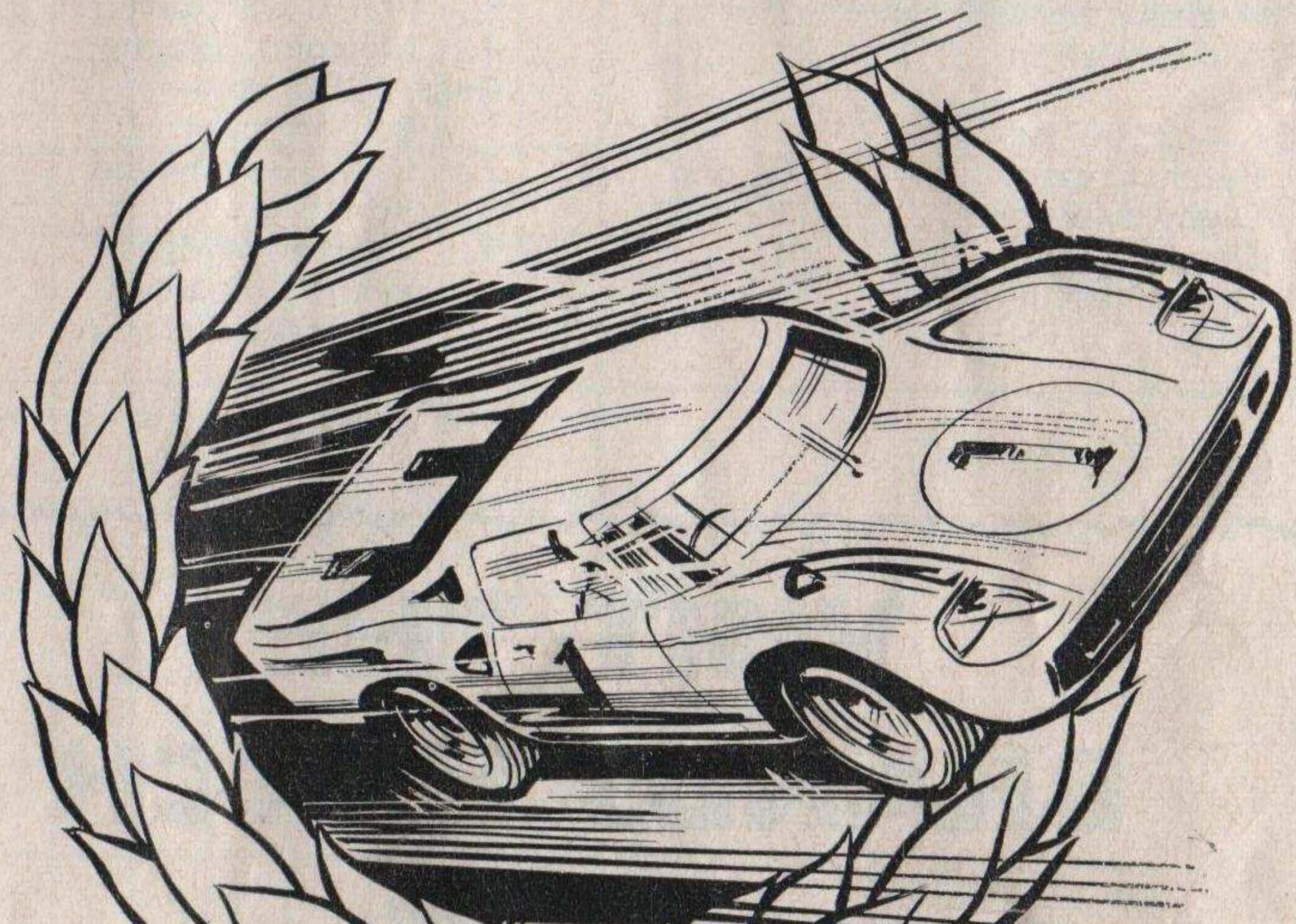
**Between the Main Grandstand and the Paddock**



# Motoring News

THE FIRST MOTORING NEWSPAPER

is unbeatable-



MOTORING NEWS CHAMPIONSHIP

FINAL AT SILVERSTONE ON 14th OCTOBER 1967

Price 9d EVERY THURSDAY

published at:  
STANDARD HOUSE, BONHILL STREET, LONDON, E.C.2.

## EVENT 2

START: 2.40 p.m.

10 LAPS

### MOTORING NEWS CHAMPIONSHIP RACE

FOR SPECIAL GRAND TOURING CARS AS DEFINED BY THE BRSCC

A qualifying round for the Motoring News Grand Touring Car Championship

No.	Entrant and Driver	Car	cc
<b>Class A — Over 1600 cc</b>			
100	Mrs. W. Hamblin (Dvr.: K. Hamblin)	Shelby American Cobra	4727
101	R. A. Gibson	Jaguar Lightw't 'E' Type	3781
102	B. Croot	Allard-Jaguar	3442
103	Mag-Cap Racing (Dvr.: A. C. Harvey)	Chevron GT	1991
104	Chevron Cars (Dvr.: D. Bennett)	Chevron GT	1991
105	P. Creasey	Ginetta GT	1960
106	R. Gordon	Lotus Elan	1865
107	B. D. Martin	Martin GT	1650
<b>Class B — 1151 cc to 1600 cc</b>			
110	P. Taggart	Chevron GT	1594
111	J. Lepp	Chevron GT	1594
112	Lotus Components Ltd. (Dvr.: J. Miles)	Lotus 47	1594
114	Molash Racing Partnership (Dvr.: K. G. Holland)	Lotus 47	1594
115	J. F. Morley	Lotus 47	1594
117	R. Gordon (Dvr.: P. Jackson)	Lotus Elan	1594
118	M. J. Crabtree (Dvr.: Entrant or K. Simmons)	Lotus Elan	1594
119	Uptune (Racing) Ltd. (Dvr.: R. Ellice)	Lotus Elan	1594
120	W. J. Tee (Dvr.: M. Twite)	Ginetta GT	1594
121	P. Bryan	Ginetta GT	1594
122	Worcestershire Racing Association (Dvr.: J. Bamford)	Ginetta GT	1594
124	R. Bennett	Marcos GT	1293
125	J. Ward	Lotus Elite	1216
<b>Class C — Up to 1150 cc</b>			
131	D. Mockford	Diva GT	1148
132	J. M. Graty	Diva GT	1148
134	N. Skeaping	Marcos GT	1147
135	A. E. Newman (Dvr.: J. E. Miles)	Unipower GT	1102
91	A. W. Pearce	Concord GT	1098
92	J. Nicholson	Mercury GT	1098
136	C. H. Beadle	Marcos GT	1098
137	A. Powell	Nathan GT	998
138	L. Goodwin	Emery GT	998
139	Worcestershire Racing Association (Dvr.: P. Ridgway)	Ginetta GT	997
140	Worcestershire Racing Association (Dvr.: J. Burton)	Ginetta GT	997
141	A. Mylius	Ginetta GT	997
142	J. Wimbush	Ginetta GT	997
94	J. Corfield	Mercury GT	997
144	M. J. Walton	Fiat-Abarth 1000	992
<b>Reserves :</b>			
108	R. Vincent	(1st Reserve)	Jaguar Lightw't 'F' Type 3781
98	T. A. Twaites	(2nd Reserve)	Mercury GT 1098

(Grid Positions, Lap Chart and Results overleaf)



*saloon cars respond to*  
**HIGH PERFORMANCE**  
**GOLD CROSS**



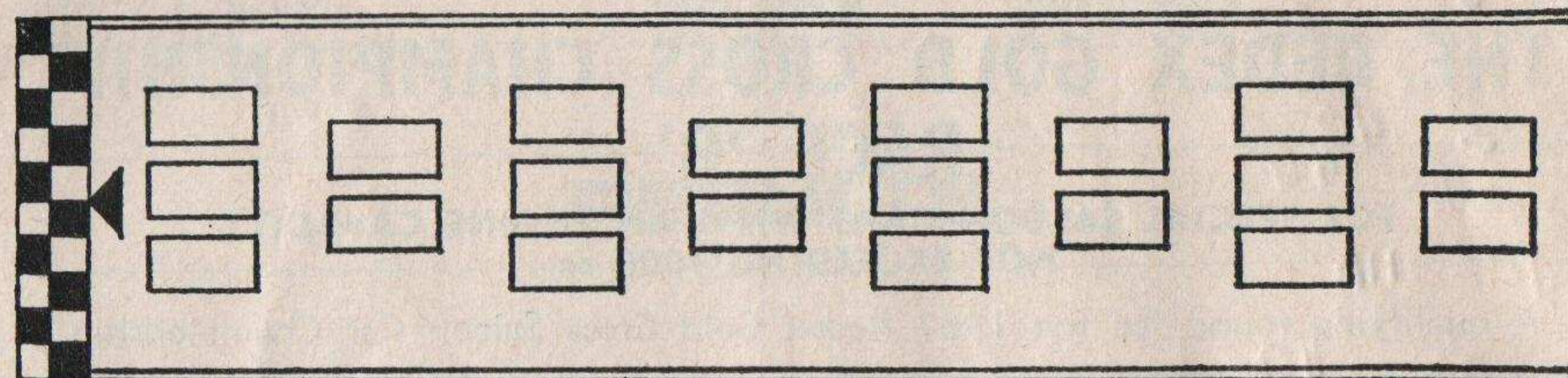
The new wide-range 20W/50 Motor Oil, blended by REDeX—the additive specialists—to give first-time high performance starting, maximum protection and lower oil consumption.

Full details and stockists from

**REDeX LIMITED, LONDON, W.4**

**GRID POSITIONS**

EVENT TWO continued



POS.	1	2	3	4	5	6	7	8	9	10
1										
2										
3										
4										
5										
6										
7										
8										
9										
10										
11										
12										
13										
14										
15										
16										
17										
18										
19										
20										

**RESULTS**

**OVERALL :**  
 1st..... 112 2nd..... 103 3rd..... 111  
 4th..... 115 5th..... 114 6th..... 118  
 Winner's Time..... 17.30 Speed..... 90.77 mph  
 Fastest Lap: Car No..... 112  
 Time..... 1.43.6 Speed..... 92.02 mph

**Class A :**  
 1st..... 103 2nd..... 105 3rd.....  
 4th.....  
 Winner's Time..... 17.47.4 Speed..... 89.38 mph  
 Fastest Lap: Car No..... 103  
 Time..... 1.45.2 Speed..... 90.61 mph

**Class B :**  
 1st..... 144 2nd..... 135 3rd..... 138  
 4th.....  
 Winner's Time..... 18.0.8 Speed..... 79.44 mph  
 Fastest Lap: Car No..... 140  
 Time..... 1.56.0 Speed..... 82.27 mph

**Class C :**  
 1st..... 112 2nd..... 113 3rd..... 111  
 4th.....  
 Winner's Time..... Speed..... mph  
 Fastest Lap: Car No.....  
 Time..... Speed..... mph



# EVENT 3

START : 3.20 p.m.

10 LAPS

## THE REDEX GOLD CROSS CHAMPIONSHIP RACE 'B'

FOR SPECIAL SALOON CARS WITH AN ENGINE CAPACITY NOT EXCEEDING 1000 cc

A qualifying round for the 1967 Redex Gold Cross Saloon Car Championship

No.	Entrant and Driver	Car	cc
<b>Class A — 851 cc to 1000 cc</b>			
202	D. A. Richards	Austin Mini-Cooper 'S'	999
204	K. Appleby	Austin Mini-Cooper 'S'	999
205	R. J. Jones (Dvr.: Entrant or P. Hutton)	Austin Mini-Cooper 'S'	999
206	St. Christopher Motors (Dvr.: M. Raymond)	Austin Mini-Cooper 'S'	999
207	S. Ridge	Austin Mini-Cooper	998
208	Dr. J. N. Bean	Austin Mini-Cooper	998
209	R. Thompson (Dvr.: Entrant or B. Cotgrove)	Austin Mini-Cooper	998
210	Mini Seven Club Racing Team (Dvr.: D. R. J. Morgan)	Morris Mini-Cooper 'S'	999
211	Mini Seven Club Racing Team (Dvr.: C. Carling)	Morris Mini-Cooper 'S'	999
212	W. Ashman	Morris Mini-Cooper	998
214	J. S. W. Hunt	Morris Mini-Cooper	998
215	Alan Fraser Racing Team (Dvr.: W. B. Unett)	Hillman Imp	998
216	B. Denton	Hillman Imp	998
217	A. D. Taylor	Hillman Imp	998
218	G. D. Pluckrose	Hillman Imp	998
219	J. Nightingale	Hillman Imp	998
221	East Anglian Racing Cars (Dvr.: A. Peer)	Ford Anglia	997
222	L. Hickman	Ford Anglia	997
223	T. Harmer	Austin Mini-Cooper 'S'	970
225	A. E. Webb	Hillman Imp	875
<b>Class B — Up to 850 cc</b>			
231	T. M. Gilks	Austin Mini	848
232	P. D. Read	Austin Mini	848
233	A. H. Johnson	Austin Mini	848
235	R. M. Friend	Austin Mini	848
236	R. Williamson	Austin Mini	848
237	R. T. Cox	Austin Mini	848
238	R. Ferris	Austin Mini	848
239	Hon. W. T. I. Hunt (Dvr.: G. A. Wadsworth)	Morris Mini	848
240	G. Allen	Morris Mini	848
241	R. G. Rayner	Morris Mini	848
242	P. G. Creese	Morris Mini	848
243	P. Vann	Morris Mini	848
245	W. Lawrence (Dvr. R. Riley)	Morris Mini	848
246	C. J. Alford	Saab 96	841
247	C. J. Alford (Dvr.: M. Bennett)	Saab 96	841
248	R. Capell	Hillman Imp	848

### EVENT THREE (continued)

Reserves			
244	R. Mason	(1st Reserve)	Morris Mini ... 848
224	N. Edginton	(2nd Reserve)	Morris Mini-Cooper 'S' 970
220	P. Bevan	(3rd Reserve)	Hillman Imp ... 998
203	N. Waterhouse	(4th Reserve)	Austin Mini-Cooper 'S' 999
234	M. Revell	(5th Reserve)	Austin Mini ... 848
201	M. C. Davidson	(6th Reserve)	Morris Mini-Cooper 'S' 999

## RESULTS

### Overall

1st..... 21	2nd..... 22	3rd..... 10	4th..... 15
Winner's Time..... 19.29.6	Speed..... 31.57	mph	

### Class A

1st..... 20	2nd..... 43	3rd..... 38
Winner's Time.....	Speed.....	mph

### Class B

Fastest Lap by Car No.....	Fastest Lap by Car No..... 236
Time.....	Speed..... 77.31
Speed.....	mph

## Redex Gold Cross Saloon Car Championship

The 1967 Redex Gold Cross Saloon Car Championship is sponsored by Redex Ltd, makers of the new wide-range 20W/50 Gold Cross motor oil, for selected club events at Brands Hatch, Mallory Park, Oulton Park and Snetterton.

The overall winner, regardless of class, receives £100 and the winner of the other two classes £50.

Competitors score automatically in three classes (up to 1000 cc, 1001-1300 cc and over 1300 cc) as follows: 1st place in each class, 4 points; 2nd, 3 pts; 3rd, 2 pts; 4th, 1 pt.

The next three championship races are:

October 15	LMC Lakeside Trophy races	Mallory Park
October 21	BRSCC £1000 F3 Championship races	Oulton Park
November 12	S & DMC Sevenoaks Cup races	Brands Hatch

Points position to date is as follows:

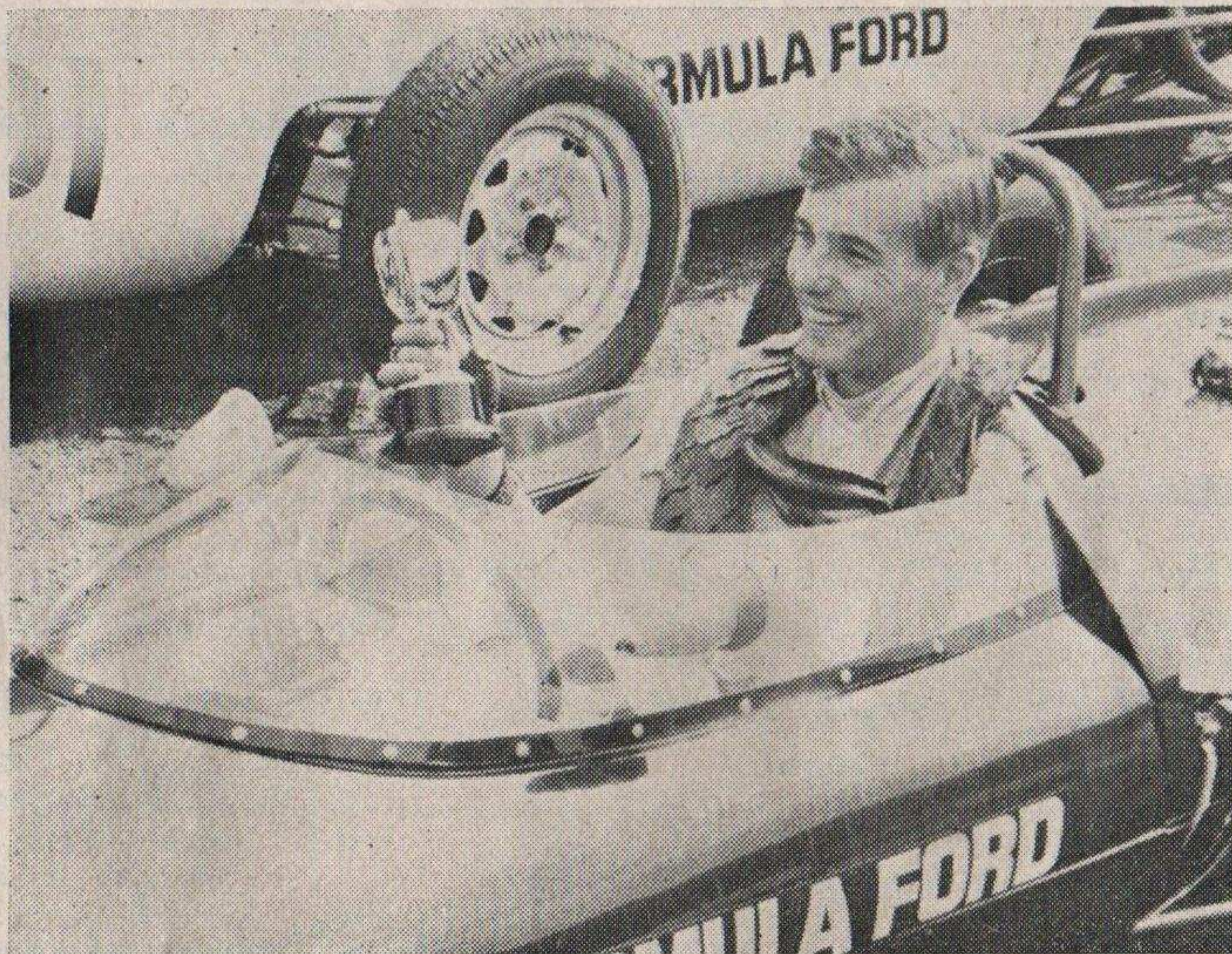
Up to 1000 cc		1001 - 1300 cc	
1. Bernard Unett	49 pts.	1. Ken Costello	55 pts.
2. Dave Morgan	48 "	2. John Wales	27 "
3. Alan Peer	32 "	3. Colin Youle	19 "
4. Charles Carling	30 "	4. Ian Mitchell	14 "
5. Lawrie Hickman	15 "	5. Guy Edwards	12 "
Over 1300 cc			
1. Roger Taylor	37 pts.		
Terry Sanger	37 "		
3. John Myerscough	17 "		
4. Bryan Thomson	14 "		
5. Brian Peacock	12 "		



# WITH FORMULA FORD

THE CHOICE IS YOURS

THE FIRST  
FORMULA FORD  
WINNER  
Ray Allen—  
Serving Soldier



- I would like further details of the racing school and the initial trials held at: **BRANDS HATCH** (All day Friday and Saturday a.m.)  
**MALLORY PARK** (All day Saturday)  
Cost—£10.10s.0d.
- I wish to compete in M.R.S.C. races for Formula Ford.  
Cost—£25 per race
- I wish to compete in M.R.S.C. races for Formula Ford on the Budget Racing Plan. (One race a month on a standing order)  
Cost—£5 per week
- I wish to buy a Formula Ford-Lotus 51  
Cost—£955
- I would like you to reserve definitely an initial trial for me at Brands Hatch/Mallory Park.

Please indicate the scheme in which you are interested and return complete page to Marc Anthony at

**motor racing stables**  
(competitions) limited

BRANDS HATCH CIRCUIT, FAWKHAM, KENT

NAME \_\_\_\_\_

ADDRESS \_\_\_\_\_



BPI9

# EVENT 4

START 4.00 p.m. 10 LAPS

## SCRATCH RACE FOR FORMULA FORD RACING CARS

No.	Entrant and Driver	Car	cc
31	Jim Russell Racing Drivers' School (Dvr.: P. Cure)	Lotus-Ford	1498
32	Jim Russell Racing Drivers' School (Dvr.: J. Day)	Lotus-Ford	1498
33	Jim Russell Racing Drivers' School (Dvr.: V. Smith)	Lotus-Ford	1498
34	Jim Russell Racing Drivers' School (Dvr.: W. Roughton)	Lotus-Ford	1498
35	Jim Russell Racing Drivers' School (Dvr.: P. Clanford)	Lotus-Ford	1498
36	Jim Russell Racing Drivers' School (Dvr.: J. Stock)	Lotus-Ford	1498
37	R. Allan	Lotus-Ford	1498
38	F. Bayes	Lotus-Ford	1498
39	J. Dalziel	Lotus-Ford	1498
40	G. Edwards	Lotus-Ford	1498
41	R. Heal	Lotus-Ford	1498
42	M. Pearce	Lotus-Ford	1498
43	S. Sherman	Lotus-Ford	1498
44	Mrs. T. Sibley	Lotus-Ford	1498
45	M. Thomas	Lotus-Ford	1498
46	J. Tighe	Lotus-Ford	1498
47	P. Wardle	Lotus-Ford	1498
48	J. Quistberg	Lotus-Ford	1498
49	D. Seigle-Morris (Dvr.: J. A. Bischoff)	Lotus-Ford	1498
50	M. Litchfield	Lotus-Ford	1498
51	P. Thurston	Lotus-Ford	1498
52	R. Turner	Lotus-Ford	1498
53	B. J. White	Lotus-Ford	1498
55	Lydden Racing School (Dvr.: G. Tomlinson)	Piper-Ford	1498
56	Lydden Racing School (Dvr.: R. Henderson)	Piper-Ford	1498
57	Jim Russell Racing Drivers' School (Dvr.: C. Bourgoignie)	Russell-Ford	1498
58	P. J. Kimberley	Russell Alexis-Ford	1498
59	A. M. R. Mallock (Dvr.: R. C. R. Mallock)	U2-Ford	1498
60	B. D. L. R. Smith	Bardahl-Ford	1498
61	Purley Performance Cars Ltd. (Dvr.: M. Greenwood)	Mystere-Ford	1498
62	Race Car Hire Ltd. (Dvr.: To be nominated)	Dulon-Ford	1498
63	J. N. Brown	Jaybee-Ford	1498

## RESULTS

1st..... 57 ..... 2nd..... 60 ..... 3rd..... 51  
 4th..... 50 ..... 5th..... 37 ..... 6th..... 40  
 Winner's Time..... 18.52.8 ..... Speed..... 84.22 mph  
 Fastest Lap: Car No. 57 Time..... 1.52.0 ..... Speed..... 55.18 mph



# EVENT 5

**START: 4.40 p.m.**

**10 LAPS**

## THE AMASCO TROPHY RACE

FOR MARQUE CARS AS DEFINED BY THE BRSCC

A qualifying round for the 1967 Amasco Marque Production Sports Car Championship

No.	Entrant and Driver	Car	cc
<b>Class A — Over 3000 cc</b>			
152	Warren Pearce Racing Organisation (Dvr.: W. Pearce)	Jaguar 'E' Type	3781
153	J. R. Woodbridge	Jaguar 'E' Type	3781
154	J. Wilson	Jaguar 'E' Type	3781
155	D. B. Metals Racing (Dvr.: J. Lewis)	Jaguar 'E' Type	3781
156	J. Filbee	Jaguar 'E' Type	3781
<b>Class B — 2001 cc to 3000 cc</b>			
161	Hon. W. T. I. Hunt	Austin Healey 100	2660
162	J. L. S. Maclay	Daimler SP250	2617
163	J. M. Gibson (Dvr.: I. Topping)	AC Ace-Zephyr	2553
164	G. W. Bolt	Triumph TR4	2138
165	R. North (Dvr.: A. House)	Morgan Plus Four	2138
167	P. D. Smith	Elva Courier s/c	1798
<b>Class C — 1151 cc to 2000 cc</b>			
171	W. Nicholson (Dvr.: D. Bunce)	MG MGB	1798
172	Mrs. J. Denton	MG MGB	1798
174	B. Sidery-Smith	MG MGB	1798
175	A. K. Reynolds	MG MGB	1798
176	R. H. Longton	TVR Grantura	1798
178	M. W. Sears	Sunbeam Alpine	1592
179	R. Enever	MG Midget	1293
180	W. A. Poole	MG Midget	1275
<b>Class D — Up to 1150 cc</b>			
181	Southend Racing Partnership (Dvr.: O. Thatcher)	MG Midget	1148
182	J. Britten	MG Midget	1144
183	G. Nigogosian	MG Midget	1144
184	R. Lloyd	Triumph Spitfire	1147
185	M. Burrows	Austin Healey Sprite	1148
186	C. Lunn	Austin Healey Sprite	1148
187	J. Streetley	Austin Healey Sprite	1139
188	A. Bending	Austin Healey Sprite	1139
189	R. Readdy	Austin Healey Sprite	1098
190	D. Wood	Austin Healey Sprite	1098
192	R. Schroeder (Dvr.: Entrant or B. Wood)	Austin Healey Sprite	1098
193	K. W. Ashby	Austin Healey Sprite	998
194	D. White	Austin Healey Sprite	998
195	M. F. Cox	Austin Healey Sprite	995
197	J. Nunn	Turner 950	1132
198	Motor Racing Stables Ltd. (Dvr.: T. Ikuzawa)	Honda S800	791
199	N. Surtees	Honda S800	791

## EVENT FIVE (continued)

Reserves			
151	Molash Racing Partnership (Dvr.: K. G. Holland)	(1st Reserve)	Jaguar 'E' Type ... 3781
173	Miss W. Paget	(2nd Reserve)	MG MGB ... 1798
191	R. Eccles	(3rd Reserve)	Austin Healey Sprite 1098
166	V. R. Gibson	(4th Reserve)	Morgan Plus Four 2138
196	R. Mould	(5th Reserve)	Austin Healey Sprite 948
177	A. P. Wingrove	(6th Reserve)	Sunbeam Alpine ... 1725

## RESULTS

Overall	1st	2nd	3rd	4th
Winner's Time	19.13	19.52	20.48	21.05
Speed	82.68	82.62	82.62	82.62
<b>Class A</b>				
1st	52	79	80	82
Winner's Time	19.13	19.52	20.48	21.05
Fastest Lap by Car No.	...	...	...	...
Time	...	...	...	...
Speed	82.68	82.62	82.62	82.62
<b>Class B</b>				
1st	65	62	64	64
Winner's Time	...	...	...	...
Fastest Lap by Car No.	...	...	...	...
Time	...	...	...	...
Speed	82.68	82.62	82.62	82.62
<b>Class C</b>				
1st	79	80	76	76
Winner's Time	19.13	19.52	20.48	21.05
Fastest Lap by Car No.	...	...	...	...
Time	...	...	...	...
Speed	82.68	82.62	82.62	82.62
<b>Class D</b>				
1st	82	92	98	98
Winner's Time	...	...	...	...
Fastest Lap by Car No.	...	...	...	...
Time	...	...	...	...
Speed	82.68	82.62	82.62	82.62

(Grid positions and Lap Chart overleaf)

## Amasco Production Marque Sports Car Championship

The 1967 Amasco Production Marque Sports Car Championship is sponsored by the Amalgamated Asphalt Companies for selected club events at Brands Hatch.

The overall winner, regardless of class, receives £100 and the winner of each of the other three classes £25.

Competitors score automatically in four classes (up to 1150 cc, 1151 - 2000 cc, 2001 - 3000 cc and over 3000 cc) as follows: 1st place in each class, 4 points; 2nd, 3 pts; 3rd, 2 pts; 4th, 1 pt.

The remaining three championship races are:

November 12	S & DMC Sevenoaks Cup races	Brands Hatch
November 26	LMC November Cup races	Brands Hatch
December 26	BRSCC Lombank Trophy	Brands Hatch
	Boxing Day races	Brands Hatch

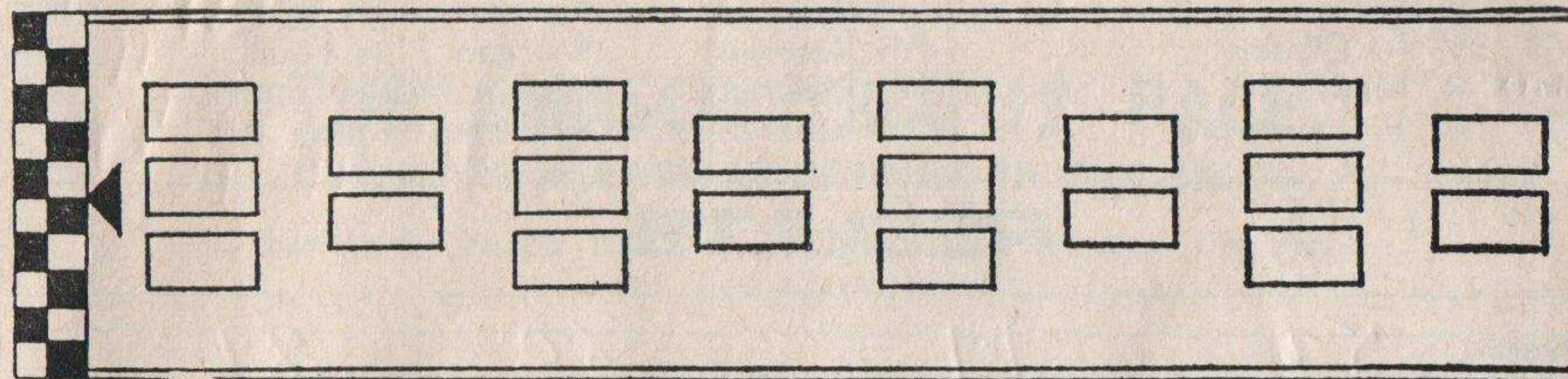
Points position to date is as follows:

Up to 1150 cc —		1151 — 2000 cc —	
1.	John Britten ... 36 pts.	1.	Rod Longton ... 29 pts.
2.	Oli Thatcher ... 24 "	2.	Roger Enever ... 28 "
3.	Richard Lloyd ... 6 "	3.	Don Bunce ... 13 "
4.	Paul Newman ... 4 "	4.	Peter Brown ... 7 "
	Garo Nigogosian ... 4 "	5.	Charles Dawkins ... 3 "
	John Elvers ... 4 "		Mrs. Jean Denton ... 3 "
	Rob Schroeder ... 4 "		
2001 — 3000 cc —		Over 3000 cc —	
1.	Alan House ... 23 pts.	1.	Keith Holland ... 36 pts.
2.	John Maclay ... 15 "	2.	Warren Pearce ... 22 "
3.	Stu Robinson ... 12 "	3.	John Quick ... 10 "
4.	Alain de Cadenet ... 7 "	4.	Alistair Cowin ... 4 "
5.	John Gott ... 5 "	5.	Cyril Levy ... 1 "
6.	Michael Blunt ... 4 "		Scott Wiseman ... 1 "



# GRID POSITIONS

EVENT FIVE continued



POS.	1	2	3	4	5	6	7	8	9	10
1										
2										
3										
4										
5										
6										
7										
8										
9										
10										
11										
12										
13										
14										
15										
16										
17										
18										
19										
20										

## NOTES

## Les Leston Formula 3 Championship

The 1967 Les Leston Formula 3 Championship is sponsored by Les Leston, famous manufacturer of racing equipment and accessories, for selected club events at Brands Hatch, Mallory Park, Oulton Park and Snetterton.

The winner receives £100 and a trophy, the second man receives £75 and the third man £50.

Competitors score automatically as follows : 1st, 9 points; 2nd, 6; 3rd, 4; 4th, 3; 5th, 2; and 6th, 1.

The next three championship races are :

October 15 LMC Lakeside Trophy races ..... Mallory Park  
 October 21 BRSCC £1000 F3 Championship races ..... Oulton Park  
 November 11 MCMRC Autumn Cup races ..... Oulton Park

Points position to date is as follows :

1. Harry Stiller ... 85 pts.	(Brabham-Ford)	7. Chris Williams 24 ..	(Brabham-Ford)
2. Alan Rollinson ... 60 ..	(Brabham-Ford)	8. Mike Walker ... 22 ..	(Brabham-Ford)
3. Tony Lanfranchi 45 ..	(Brabham-Ford/ Merlyn-Ford)	9. Mike Keens ... 20 ..	(Brabham-Ford)
4. John Miles ... 43 ..	(Lotus-Ford)	10. Derek Bell ... 15 ..	(Brabham-Ford)
5. Morris Nunn ... 42 ..	(Lotus-Ford)	11. Charles Lucas ... 14 ..	(Lotus-Ford)
6. Peter Gaydon ... 36 ..	(Brabham-Ford)	12. John Hine ... 10 ..	(Lotus-Ford)
		Tetsu Ikuzawa 10 ..	(Brabham-Ford)

## Did you know ?

That practising facilities existed at Brands Hatch for members of car and motor-cycle clubs to test their machines all day Wednesday and Saturday afternoons.

The cost is 15s. per half-hour for cars and sidecars and 10s. per half-hour for motor-cycles. You will need a current driving licence, a crash helmet and, if you are a motor-cyclist, leathers or a barbour's suit, goggles and gloves. Drivers of open cars will also need either goggles or a vizor, and all headlamps must be taped.

For further details write to Brands Hatch Circuit Ltd., Fawkham, near Dartford, Kent, or telephone West Ash 331.



# EVENT 6

START 5.20 p.m.

10 LAPS

## LES LESTON CHAMPIONSHIP RACE

SINGLE-SEATER RACING CARS COMPLYING WITH THE FIA FORMULA 3

A qualifying round for the 1967 Les Leston Formula 3 Championship

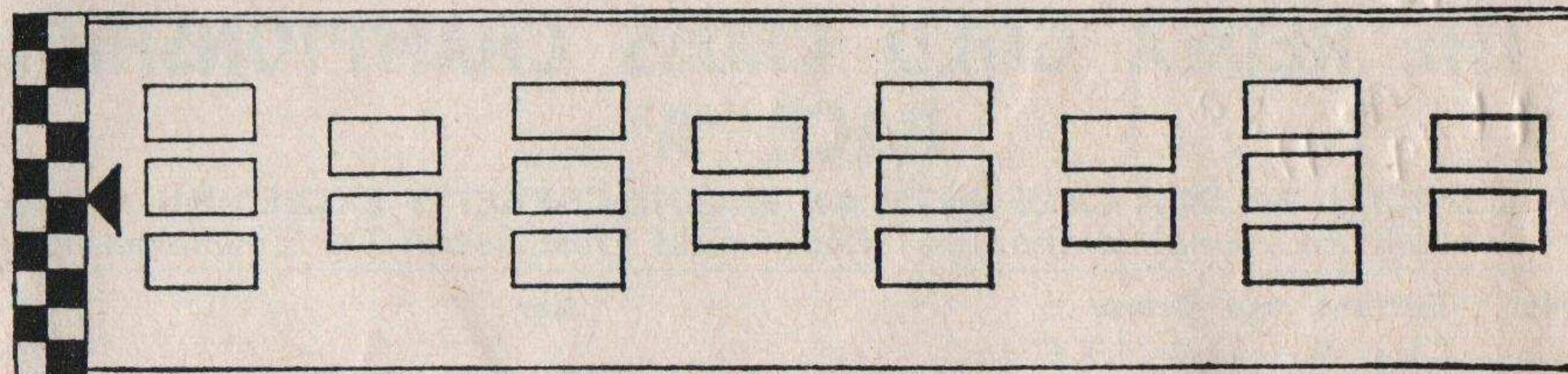
No.	Entrant and Driver	Car	cc
1	C. Lucas (Engineering) Ltd. (Dvr.: C. Lucas)	Repcos Brabham-Ford	997
2	C. Lucas (Engineering) Ltd. (Dvr.: H. Stiller)	Repcos Brabham-Ford	997
3	Motor Racing Stables Ltd. (Dvr.: T. Ikuzawa)	Repcos Brabham-Ford	997
4	Special Motor Racing Team (Dvr.: P. Gaydon)	Repcos Brabham-Ford	997
5	Bernard Lewis Racing (Dvr.: K. Crook)	Repcos Brabham-Ford	997
<del>6</del>	<del>Frank Manning Racing Ltd. (Dvr.: M. J. Walker)</del>	<del>Repcos Brabham-Ford</del>	<del>997</del>
<del>7</del>	<del>Frank Manning Racing Ltd. (Dvr.: J. R. Kendall)</del>	<del>Repcos Brabham-Ford</del>	<del>997</del>
8	D. R. J. Morgan (Dvr.: Entrant or J. Patterson)	Repcos Brabham-Ford	997
9	G. V. Coaker	Repcos Brabham-Ford	997
10	A. G. Walker	Repcos Brabham-Ford	997
11	L. Parsons	Repcos Brabham-Ford	997
12	G. L. White	Repcos Brabham-Ford	997
<del>14</del>	<del>L. Ward</del>	<del>Repcos Brabham-Ford</del>	<del>997</del>
15	P. Fattorini	Repcos Brabham-Ford	997
16	Barrie Payne Auto Scuderia (Dvr.: C. Jackson)	Repcos Brabham-Ford	997
17	B. Maskell	Repcos Brabham-Ford	997
<del>18</del>	<del>G. Oliver</del>	<del>Repcos Brabham-Ford</del>	<del>997</del>
19	Frank Lythgoe Racing Ltd. (Dvr.: D. Berry)	Repcos Brabham-Ford	997
20	Lotus Components Ltd. (Dvr.: J. Miles)	Lotus-Ford	997
21	M. Nunn	Lotus-Ford	997
22	C. Lucas (Engineering) Ltd. (Dvr.: R. Pike)	Titan-Ford	997
23	K. Bass (Dvr.: A. Lanfranchi)	Merlyn-Ford	997
24	Race Car Hire Ltd. (Dvr.: J. Andrews)	Merlyn-Ford	997
26	Sports Motors (Manchester) Ltd. (Dvr.: P. Gethin)	Chevron-Ford	997
27	McKechnie Racing Organisation (Dvr.: R. Keele)	Cooper-Ford	997
<del>28</del>	<del>J. Dobson</del>	<del>Cooper-Ford</del>	<del>997</del>
30	N. Abbott	Abbott-Ford	997

## RESULTS

1st.....20..... 2nd.....3..... 3rd.....2.....  
 4th.....16..... 5th.....23..... 6th.....1.....  
 Winner's Time.....16:50.4..... Speed.....94.42.....mph  
 Fastest Lap: Car No. 26..... Time.....1:39.6..... Speed.....95.78.....mph

# GRID POSITIONS

EVENT SIX continued



POS.	1	2	3	4	5	6	7	8	9	10
1										
2										
3										
4										
5										
6										
7										
8										
9										
10										
11										
12										
13										
14										
15										
16										
17										
18										
19										
20										

## NOTES



# EVENT 7

START : 6.00 p.m. 10 LAPS

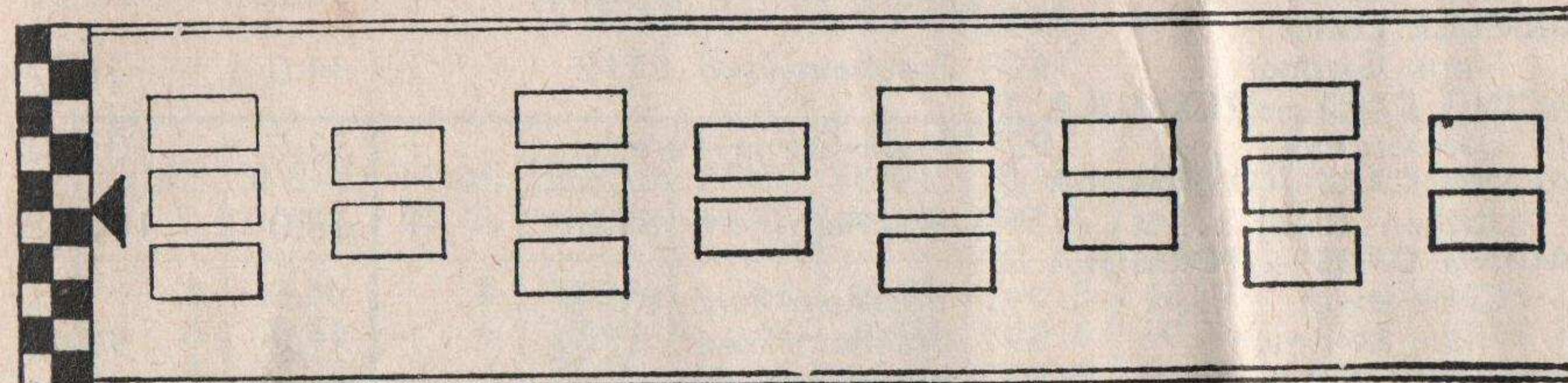
## THE REDEX GOLD CROSS CHAMPIONSHIP RACE 'A'

FOR SPECIAL SALOON CARS WITH AN ENGINE CAPACITY EXCEEDING 1000 cc  
A qualifying round for the 1967 Redex Gold Cross Saloon Car Championship

No.	Entrant and Driver	Car	cc
<b>Class A — Over 1300 cc</b>			
251	J. Ewer	Ford Mustang	4727
252	T. W. Sanger	Ford Cortina V8	4727
253	M. O. Bennion	Morris Ford V8	4736
254	B. Tarrant	Austin A40 Chevrolet	4638
255	J. Filbee (Dvr.: P. Dodd)	Jaguar 3.8	3781
256	N. Mees	Ford Anglia Lotus	1900
257	N. Abbott (Dvr.: Entrant or D. Brodie)	Ford Anglia Lotus	1900
258	East Anglian Racing Cars (Dvr.: R. Taylor)	Ford Anglia Lotus	1820
259	D. J. Garrett	Ford Anglia Lotus	1820
260	A. Roberts	Ford Anglia Lotus	1598
261	Z. Redjep	Ford Anglia Lotus	1598
262	M. Aldridge	Ford Anglia Lotus	1598
263	P. Tomlin	Ford Anglia Lotus	1598
267	R. James	Ford Anglia	1498
<b>Class B — 1001 cc to 1300 cc</b>			
271	D. A. Brodie (Dvr.: Entrant or N. Abbott)	Ford Anglia	1298
272	C. Hawker	Ford Anglia	1298
274	Team Charles Clark (Dvr.: I. Mitchell)	Austin Mini-Cooper 'S'	1298
275	B. Pearson	Austin Mini-Cooper 'S'	1293
276	M. Ridehalgh	Austin Mini-Cooper 'S'	1293
277	B. Farthing	Austin Mini-Cooper 'S'	1293
278	D. Seigle-Morris (Dvr.: Entrant or J. A. Bischoff)	Austin Mini-Cooper 'S'	1293
279	D. Jackson (Dvr.: R. Parkinson)	Austin Mini-Cooper 'S'	1293
280	W. J. Shaw	Austin Mini-Cooper 'S'	1293
281	D. Muter	Austin Mini-Cooper 'S'	1293
282	A. J. Youlden	Austin Mini-Cooper 'S'	1293
283	Top Gear Racing (Dvr.: D. Alexander)	Austin Mini-Cooper 'S'	1293
284	Woodfold Competitions (Dvr.: H. L. Blackburn)	Austin Mini-Cooper 'S'	1293
287	Cripspeed (Dvr.: K. Costello)	Morris Mini-Cooper 'S'	1298
288	B. Cox	Morris Mini-Cooper 'S'	1294
289	P. Lague	Morris Mini-Cooper 'S'	1293
290	V. J. Purseglove (Dvr.: P. A. Purseglove)	Morris Mini-Cooper 'S'	1293
291	T. W. Davies	Morris Mini-Cooper 'S'	1293
292	D. L. Gibb	Morris Mini-Cooper 'S'	1293
293	J. F. Stevens	Morris Mini-Cooper 'S'	1293
295	Booth, Poole & Co. Ltd. (Dvr.: A. K. Poole)	Wolseley Hornet	1293
296	M. J. Lawlor (Dvr.: Entrant or R. Bunting)	Austin A40	1223
<b>Reserves</b>			
297	L. Goodwin (Dvr.: To be nominated) (1st Reserve)	Hillman Imp	1100
270	Superspeed Conversions Ltd. (Dvr.: M. Young) (2nd Reserve)	Ford Anglia	1298
285	Wilson's Autos (Dvr.: C. Youle) (3rd Reserve)	Morris Mini-Cooper 'S'	1293
264	Byker Hill Garage (Dvr.: B. Robinson) (4th Reserve)	Ford Cortina Lotus	1598
268	J. M. Brassington (5th Reserve)	Morris 1800	1798

# GRID POSITIONS

EVENT SEVEN continued



POS.	1	2	3	4	5	6	7	8	9	10
1										
2										
3										
4										
5										
6										
7										
8										
9										
10										
11										
12										
13										
14										
15										
16										
17										
18										
19										
20										

## RESULTS

Overall

1st..... 2nd.....

3rd..... 4th.....

Winner's Time .....

Speed ..... mph

Class A

1st..... 2nd..... 3rd.....

Winner's Time..... Speed.....

Fastest Lap by Car No. ....

Time ..... Speed .....

Class B

1st..... 2nd..... 3rd.....

Winner's Time..... Speed.....

Fastest Lap by Car No. ....

Time ..... Speed .....



# FASTEST LAPS

BRANDS HATCH GRAND PRIX CIRCUIT					2.65 miles
Driver	c.c.	Car	min.	sec.	m.p.h.
<b>OUTRIGHT CIRCUIT RECORD</b>					
Dan Gurney	2997	Eagle-Gurney-Weslake	1	32.6	103.02
<b>FORMULE LIBRE</b>					
Frank Gardner	1498	Brabham-Ford BT10	1	44.0	91.73
<b>RACING CARS — FORMULA 1</b>					
Dan Gurney	2997	Eagle-Gurney-Weslake	1	32.6	103.02
<b>RACING CARS — FORMULA 2</b>					
Jochen Rindt	1594	Brabham-Ford BT24	1	33.0	102.58
<b>RACING CARS — FORMULA 3</b>					
Chris Irwin	997	Brabham-Ford BT18			
Alan Rollinson	997	Brabham-Ford BT21	1	41.0	94.45
Morris Nunn	997	Lotus-Ford 41			
<b>SPORTS-RACING CARS — up to 1150 c.c.</b>					
Roger Nathan	998	Costin-Nathan-Hillman	1	47.4	88.83
<b>SPORTS-RACING CARS — over 1150 c.c.</b>					
Chris Amon	5359	McLaren-Elva-Chevrolet MIB	1	35.6	99.79
<b>GROUP 4 SPORTS CARS — up to 1150 c.c.</b>					
Jimmy Mackay	1098	Lotus 11 GT	1	54.4	83.39
<b>GROUP 4 SPORTS CARS — 1151 to 1600 c.c.</b>					
Peter Procter	1594	Lotus Elan			
Ray Parsons	1594	Lotus Elan	1	49.6	87.04
Bill Dryden	1594	Lotus Elan			
<b>GROUP 4 SPORTS CARS — 1601 to 2500 c.c.</b>					
Tony Dean	1991	Porsche Carrera 6	1	44.2	94.27
<b>GROUP 4 SPORTS CARS — over 2500 c.c.</b>					
Paul Hawkins	4727	Ford GT40	1	39.0	96.36
<b>SPECIAL GRAND TOURING CARS — up to 1150 c.c.</b>					
Clive Lacey	1098	Merlyn Mk. 4A GT	1	54.2	83.54
<b>SPECIAL GRAND TOURING CARS — 1151 to 1600 c.c.</b>					
John Miles	1594	Lotus Elan	1	50.6	86.26
<b>SPECIAL GRAND TOURING CARS — 1601 to 2500 c.c.</b>					
John Miles	1650	Diva GT	1	50.6	86.26
<b>SPECIAL GRAND TOURING CARS — over 2500 c.c.</b>					
Ron Fry	4727	Ford GT40	1	48.2	88.17
<b>CLUBMEN'S SPORTS CARS — up to 1000 c.c.</b>					
Brian Bull	997	Lotus-Ford 7	1	55.4	82.67
<b>CLUBMEN'S SPORTS CARS — 1001 to 1500</b>					
Tim Goss	1498	Lotus-Ford 3/7	1	48.6	87.84
<b>MARQUE SPORTS CARS — up to 1150 c.c.</b>					
Bill Bradley	1147	Triumph Spitfire	1	55.8	82.38
<b>MARQUE SPORTS CARS — 1151 to 2000 c.c.</b>					
Alec Poole	1293	Austin-Healey Sprite	1	55.6	82.53
<b>MARQUE SPORTS CARS — 2001 to 3000 c.c.</b>					
No Record					
<b>MARQUE SPORTS CARS — over 3000 c.c.</b>					
Warren Pearce	3781	Jaguar E-type	1	51.2	85.79
<b>GROUP 5 SALOON CARS — up to 1000 c.c.</b>					
John Fitzpatrick	997	Ford Anglia	1	54.4	83.39
<b>GROUP 5 SALOON CARS — 1001 to 1300 c.c.</b>					
John Rhodes	1293	Mini-Cooper 'S'	1	51.4	85.64
<b>GROUP 5 SALOON CARS — 1301 to 2000 c.c.</b>					
Jim Clark	1594	Lotus Ford Cortina	1	49.0	87.52
<b>GROUP 5 SALOON CARS — over 2000 c.c.</b>					
Frank Gardner	4727	Ford Falcon	1	48.0	88.33
<b>SPECIAL SALOON CARS — up to 850 c.c.</b>					
Ray Calcutt	848	Hillman Imp	2	2.8	77.69
<b>SPECIAL SALOON CARS — 851 to 1000 c.c.</b>					
Alan Peer	997	Ford Anglia	1	57.8	80.98
<b>SPECIAL SALOON CARS — 1001 to 1300 c.c.</b>					
John Wales	1293	Mini-Cooper 'S'	1	53.0	84.42
<b>SPECIAL SALOON CARS — over 1300 c.c.</b>					
Chris Craft	4727	Ford Mustang 2 + 2	1	52.2	85.03

# BRANDS HATCH LAP SPEED TABLE

1 Lap = 2.65 Miles

TIME M. S.	SPEED m.p.h.	TIME M. S.	SPEED m.p.h.	TIME M. S.	SPEED m.p.h.	TIME M. S.	SPEED m.p.h.	TIME M. S.	SPEED m.p.h.
.8	73.50	.8	78.33	.8	83.83	.8	90.17	.8	97.55
.6	73.61	.6	78.45	.6	83.98	.6	90.34	.6	97.75
.4	73.72	.4	78.58	.4	84.13	.4	90.51	.4	97.95
.2	73.84	.2	78.71	.2	84.28	.2	90.68	.2	98.15
2/09.0	73.95	2/01.0	78.84	1/53.0	84.42	1/45.0	90.86	1/37.0	98.35
.8	74.07	.8	78.97	.8	84.57	.8	91.03	.8	98.55
.6	74.18	.6	79.10	.6	84.72	.6	91.20	.6	98.76
.4	74.30	.4	79.24	.4	84.87	.4	91.38	.4	98.96
.2	74.41	.2	79.37	.2	85.03	.2	91.55	.2	99.17
2/08.0	74.53	2/00.0	79.50	1/52.0	85.18	1/44.0	91.73	1/36.0	99.37
.8	74.65	.8	79.63	.8	85.33	.8	91.91	.8	99.58
.6	74.76	.6	79.77	.6	85.48	.6	92.08	.6	99.79
.4	74.88	.4	79.90	.4	85.64	.4	92.26	.4	100.00
.2	75.00	.2	80.03	.2	85.79	.2	92.44	.2	100.21
2/07.0	75.12	1/59.0	80.17	1/51.0	85.95	1/43.0	92.62	1/35.0	100.42
.8	75.24	.8	80.30	.8	86.10	.8	92.80	.8	100.68
.6	75.35	.6	80.44	.6	86.26	.6	92.98	.6	100.85
.4	75.47	.4	80.57	.4	86.41	.4	93.16	.4	101.06
.2	75.59	.2	80.71	.2	86.57	.2	93.35	.2	101.27
2/06.0	75.71	1/58.0	80.84	1/50.0	86.73	1/42.0	93.53	1/34.0	101.49
.8	75.83	.8	80.98	.8	86.88	.8	93.71	.8	101.71
.6	75.96	.6	81.12	.6	87.04	.6	93.90	.6	101.92
.4	76.08	.4	81.26	.4	87.20	.4	94.08	.4	102.14
.2	76.20	.2	81.40	.2	87.36	.2	94.27	.2	102.36
2/05.0	76.32	1/57.0	81.54	1/49.0	87.52	1/41.0	94.45	1/33.0	102.58
.8	76.44	.8	81.68	.8	87.68	.8	94.64	.8	102.80
.6	76.56	.6	81.82	.6	87.84	.6	94.83	.6	103.02
.4	76.69	.4	81.96	.4	88.01	.4	95.02	.4	103.25
.2	76.81	.2	82.10	.2	88.17	.2	95.21	.2	103.47
2/04.0	76.93	1/56.0	82.24	1/48.0	88.33	1/40.0	95.40	1/32.0	103.70
.8	77.06	.8	82.38	.8	88.50	.8	95.59	.8	103.92
.6	77.18	.6	82.53	.6	88.66	.6	95.78	.6	104.15
.4	77.31	.4	82.67	.4	88.83	.4	95.98	.4	104.38
.2	77.43	.2	82.81	.2	88.99	.2	96.17	.2	104.60
2/03.0	77.56	1/55.0	82.96	1/47.0	89.16	1/39.0	96.36	1/31.0	104.84
.8	77.69	.8	83.10	.8	89.33	.8	96.56	.8	105.07
.6	77.81	.6	83.25	.6	89.49	.6	96.75	.6	105.30
.4	77.94	.4	83.39	.4	89.66	.4	96.95	.4	105.53
.2	78.07	.2	83.54	.2	89.83	.2	97.15	.2	105.76
2/02.0	78.20	1/54.0	83.68	1/46.0	90.00	1/38.0	97.35	1/30.0	106.00

$$\text{SPEED (in m.p.h.)} = \frac{2.65 \times 3600 \times \text{No. of laps}}{\text{TIME (in seconds)}}$$



Don't miss the last British International of 1967!

# GUARDS MOTOR SHOW 200

Organised  
by the  
British  
Automobile  
Racing  
Club

SUNDAY OCTOBER 29 — 11.30 am

**Programme includes :**

**GUARDS MOTOR SHOW 200 TROPHY RACE** for British Championship saloon cars (50 laps — 132.5 miles)

**LOMBANK TROPHY RACE** for Formula 3 cars (two 10-lap heats and a final of 20 laps — 53 miles)

**NUVOLARI CUP RACE** for Historic Racing Cars (10 laps — 26.5 miles)

**Racing on the 2.65-mile Grand Prix circuit**

**See the final, thrilling round of the  
1967 British Saloon Car Championship!**

With practising taking place on the very last day of the Earls Court Motor Show and racing the following day, this meeting at Brands Hatch should be extremely interesting indeed. It is particularly appropriate that the race follows the show as all cars that will be racing in the main event — the 50-lap Guards Motor Show 200 Trophy race — will be similar to those one can buy at the show.

This race also qualified as the final and deciding round of the British Saloon Car Championship, at present led by Frank Gardner with a Ford Falcon. John Fitzpatrick, who heads the Broadspeed Team of 1000 cc Ford Anglias and who was last year's champion, is exactly eight points behind Gardner and can equal his score if Gardner does not get any points at all and Fitzpatrick wins his class, so there are two people who can be champion.

Supporting the main race will be an event for Formula 3 cars being run in two 10-lap heats and a 20-lap final, with considerable prize money for the winner. It is anticipated that a large number of Continental entries will be over in England for this event. Also on the programme is the 10-lap Nuvolari Cup race for Historic racing cars — Maserati, Cooper-Bristol, Connaught, Bugatti, Aston Martin and many other famous cars will be taking part.

## GUARDS MOTOR SHOW 200 ADVANCE BOOKING FORM

To : Brands Hatch Circuit Ltd., Fawkham, Kent.  
Telephone : WEST ASH 333 (For enquiries only.  
No advance bookings can be made by telephone)  
Kindly forward Guards Motor Show 200 tickets  
as follows :

**Covered Grandstands**

You will be allocated the best remaining covered seats at the time of receipt of this application.

.....Adult Seats in Paddock Hill  Startline  Clearways   
Stand at 30s each. (Tick appropriate square) £.....

.....Child Seats in Paddock Hill  Startline  Clearways   
Stand at 15s. each (Tick appropriate square) £.....

.....Adult Seats in Top Straight Stand at 25s. each £.....

.....Child Seats in Top Straight Stand at 10s. each £.....

Prices are inclusive of entry to all circuit standing enclosures, also on practice day, and to car parks.

**Enclosures — Round entire circuit**

.....Adult tickets at 15s. including all trackside £.....  
standing enclosures, car parks, but not to practice.

CHILDREN FREE if accompanied by adult or wearing school uniform.

South Bank Slope *will* be open for parking.

**Paddock**

.....Paddock admissions (adult or child) at £.....  
10s. extra.

Enclosed please find cash  P.O.  Cheque  for  
£.....

Please make cheques payable to Brands Hatch Circuit Ltd.

Name .....

Address .....

PLEASE ATTACH STAMPED ADDRESSED ENVELOPE  
also send me :

POSTER  SCREEN STICKER  BOOKING FORM

**Book early and avoid disappointment**



# YOU TOO CAN DRIVE AT 70 +

ON ONE OF BRITAIN'S LEADING RACE TRACKS



BY JOINING THE  
Brands Hatch Motor Club  
Snetterton Motor Racing Club  
Mallory Park Motor Club



For 2 or 3 guineas a year you can experience something new in Motor Club enjoyment

## DRIVE ON A RACE TRACK

When you join a circuit car club you will be sent three tickets each entitling you to 20 laps driving your own silenced road car round the Brands Hatch, Snetterton and Mallory Park race tracks. All three circuits are open for this purpose on Tuesday and Thursday evenings each week during the summer, and on certain weekend days throughout the year. Each track is properly supervised and now has permanent catering services. Members are covered automatically by legal liability insurance and low-cost personal accident insurance is available as an optional extra.

## A CIRCUIT CLUBHOUSE

Close to the paddock at Brands Hatch and Snetterton, and to the hairpin at Mallory Park, members have their own modern-style motoring pubs and clubhouse. They are open most evenings, weekdays, weekends, and on all practice and race days. Apart from their attractive bars, set against a background of motor badges and paintings, the clubhouses are also equipped with music and amusements. They are also the scene of film shows, dances and cocktail parties.

## YOUR OWN YEAR BOOK

Through the post each December – or immediately if you join while stocks last – you will receive a bound copy of *Motor Racing Year* (post free value 22/6.) This splendid production, edited by the staff of the magazine *Motor Racing* reviews the previous year's racing scene and is packed with motor sport data and exclusive hitherto unpublished photographs. In addition, regular news letters will keep you informed of club news, facilities and social events.

## HOW TO JOIN

Complete the application form below and send it, with your remittance to:  
The Secretary: Brands Hatch Motor Club, c/o Brands Hatch Circuit Ltd., Fawkham, Dartford, Kent. Tel.: West Ash 331  
The Secretary: Mallory Park Motor Club, c/o Mallory Park Circuit Ltd., Kirkby Mallory, Leicestershire. Tel.: Earl Shilton 3306  
The Secretary: Snetterton Motor Racing Club, c/o Snetterton Circuit Ltd., Norwich, Norfolk, NOR 10.X. Tel.: Quidenham 303  
Your membership card and further details concerning track use and season brooches will be forwarded immediately.

## SKID ROAD

You also receive three more tickets, each entitling you to a weekend practice session on the Brands Hatch skid road, built specially for the High Performance Course of the British School of Motoring. In your own car you can spin safely on the special mastic surface through 360 degrees from only 20 m.p.h.

## CONSIDER THESE BENEFITS

## CHEAPER SPECTATING

You can also purchase, at a guinea less than the public rates, low-cost car race spectator season brooches for yourself, one other male, and up to four ladies, at one or all of the three circuits involved. These admit your car to any public park and all brooch holders to the paddock at Mallory and Snetterton and any normal viewing area. At Brands Hatch a season brooch costs 5 gns. for adult males, and 4 gns. only for ladies, compared with individual admission tickets totalling more than £18 in yearly cost. At Mallory Park the brooches cost 4 gns. for males and 3 gns. for ladies for over £11 normal value. At Snetterton 3 gns. for males and 2 gns. for ladies for over £9 normal value.

## MEMBER OF THREE

Membership of any one circuit car club allows you and up to three guests to use the clubhouses at Mallory Park, Snetterton and Brands Hatch. Similarly, members of any one circuit car club are also automatically members of the other two, and are entitled to exchange skid-road and race-track tickets (when applicable), to use the other facilities at concession rates, and to enjoy full clubhouse privileges.

## AGAIN AT 70 +

As a member of a circuit car club you can again extract the maximum in speed and roadholding from your car. At Brands, Mallory and Snetterton you can enjoy real performance on roadways designed to bring out the best in driving skill and engineering. And you can do so within safety barriers, wide run-offs, and without the risk of oncoming traffic. And afterwards—you can relax in the clubhouse with people with interests just like yours.

## JOIN TODAY

For 3 gns. a year (2 gns. if a B.R.S.C.C. member) you can enjoy all the advantages described. (Track membership.) For 2 gns. a year you can enjoy all the advantages described, except drive on the tracks and skid roads. (Social membership.) Each circuit car club has its own distinctive emblem which is reproduced on transfers, car and lapel badges, and on club ties.

## FULL MEMBERSHIP APPLICATION FORM

Dear Sir,  
Please enrol me as a member of the: Brands Hatch Motor Club, The Snetterton Motor Racing Club, The Mallory Park Motor Club. Please also send me the following:

	£	s.	d.
..... ties (green, blue, maroon) at 17s. 6d. each .. ..			
..... lapel badges (pin) at 3s. 6d. each .. ..			
..... car badges at £1 5s. each ..			
..... 3 in. transfers at 1s. each ..			
I also enclose:			
3 gns. for twelve months track membership .. ..			
2 gns. for twelve months social membership .. ..			

TOTAL £ \_\_\_\_\_

(Delete the inapplicable.)

Please make your cheque payable to the club of your choice.

NAME .....

ADDRESS .....

TELEPHONE NUMBER .....





# The British Racing and Sports Car Club

## The National Club for the Enthusiast

### MEMBERSHIP ADVANTAGES INCLUDE

- \* "MOTOR RACING"  
This National Magazine free each month.
- \* MEMBERSHIP AGENCIES  
Throughout the country.
- \* CLUB NIGHTS  
Monthly Film Shows, talks, etc.
- \* RACING CAR SHOW  
Free admission and special Members' Lounge.
- \* CLUB INSIGNIA  
Car, Lapel & Blazer Badges, Ties, etc.
- \* CIRCUIT RACING  
Throughout the year at nine different tracks.
- \* PROVINCIAL CENTRES  
Covering the whole country.
- \* DINNER DANCES & MIDNIGHT FILM SHOWS  
Grand Social occasions.

### TO JOIN

ANNUAL SUBSCRIPTION .....	£3 3 0
ENTRY FEE .....	£1 1 0
ON APPLICATION .....	£4 4 0

If you wish to be placed on the racing register an additional fee of 10/- is payable.

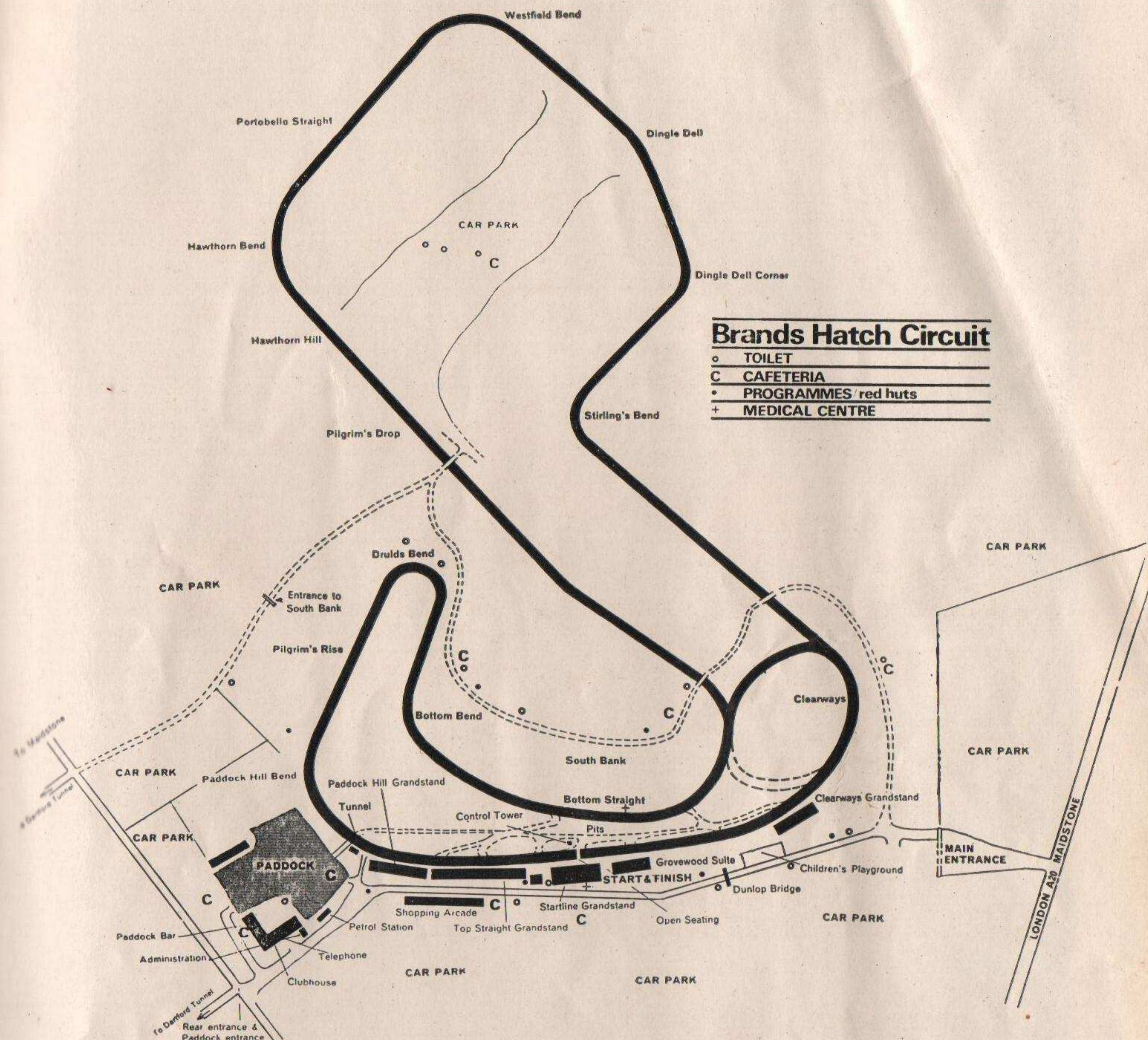
*Please send for further details and membership application form to —*

**BRITISH RACING & SPORTS CAR CLUB**

**EMPIRE HOUSE,**

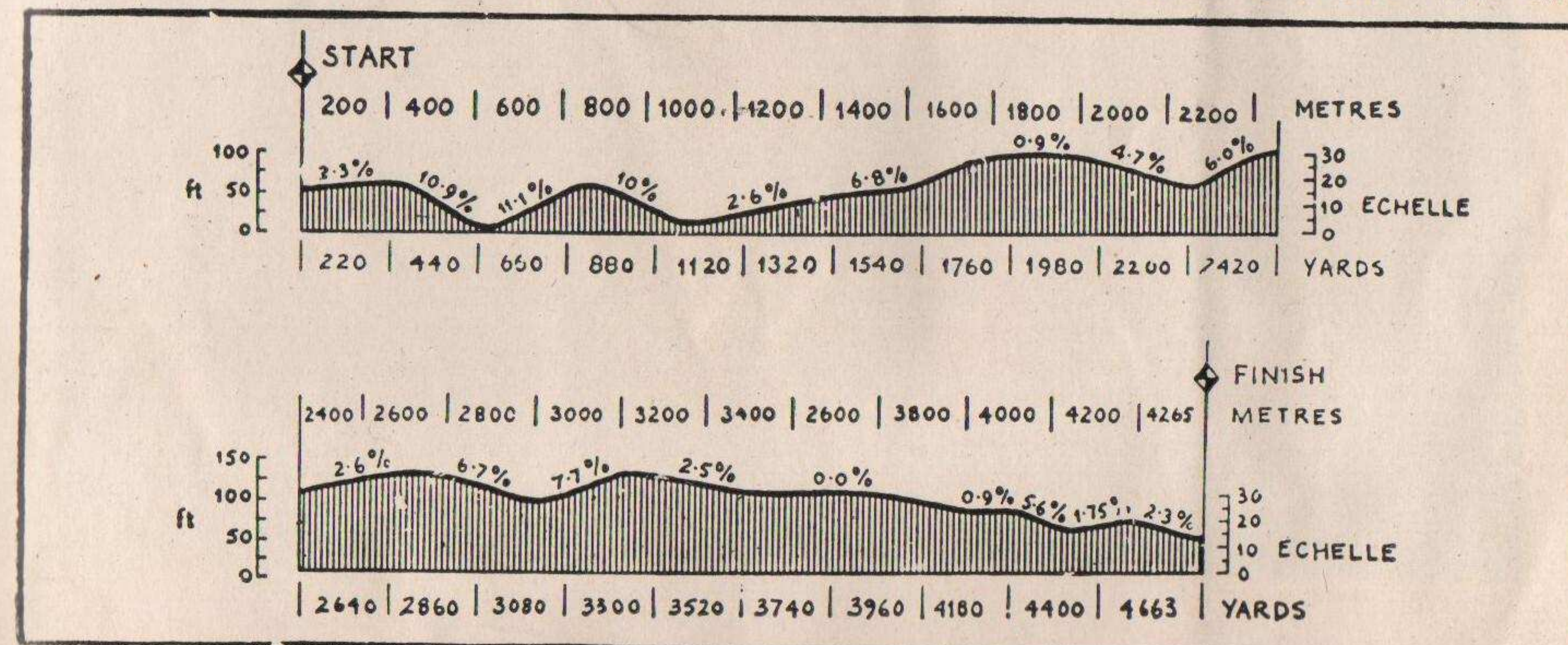
**Chiswick High Road,  
London, W.4.**

**Telephone: 01 - 995 0345**



GRAND PRIX CIRCUIT 2.65 Miles

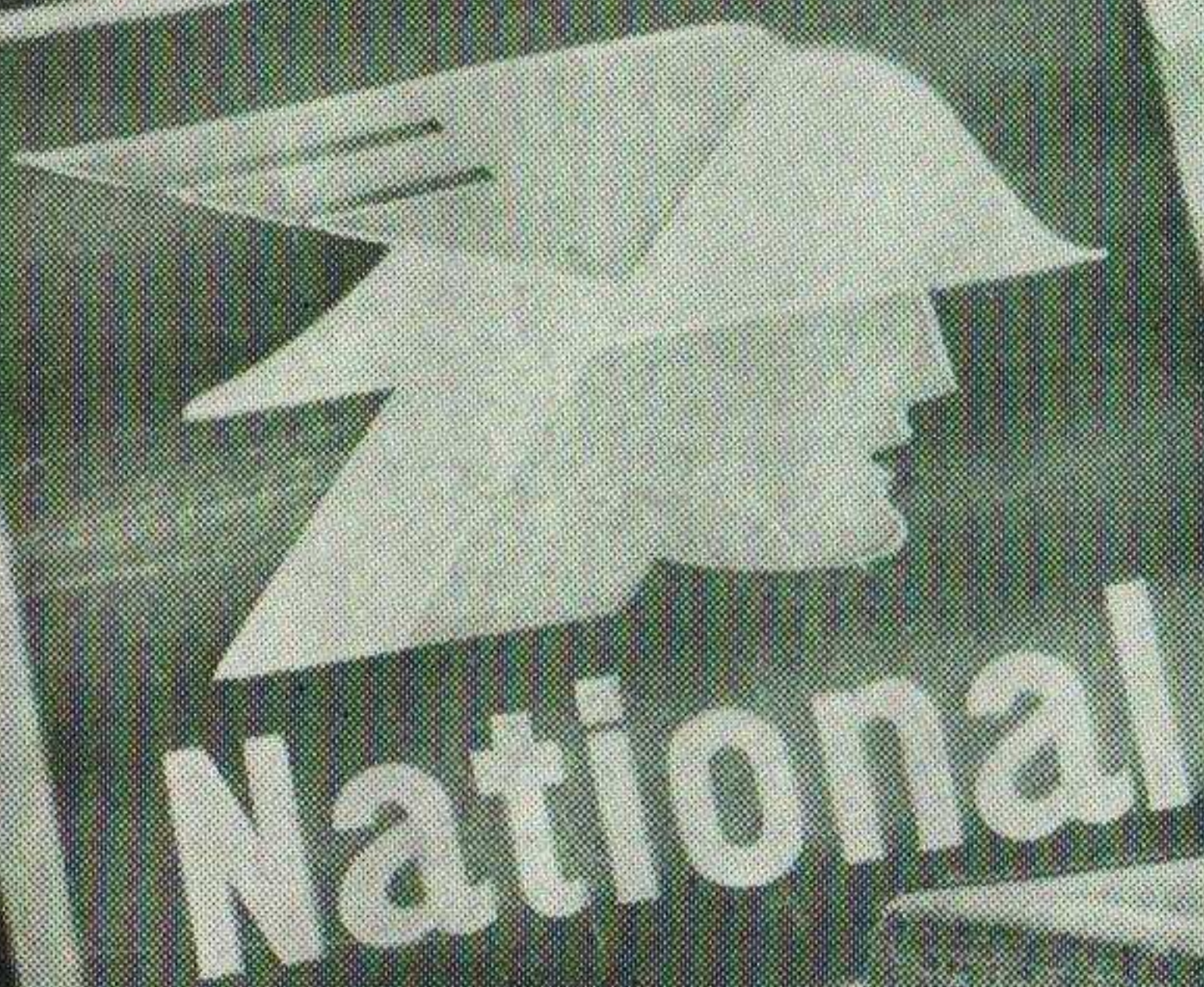
CLUB CIRCUIT 1.24 Miles



THE GRAND PRIX 2.65 MILES CIRCUIT IS IN USE FOR THIS MEETING



**Go Your  
Own Way -  
Get  
National**



**SUPER  
NATIONAL**

Beckmeter

GALLONS

PRICE PER GALLON

**SUPER**

GALLONS

PRICE PER GALLON

WILLINGS 1 PENCE THIS SALE

WILLINGS PENCE

WILLINGS PENCE