

official programme
2/-



brands
hatch

**NATIONAL MOTOR
RACE MEETING**

SUNDAY

27th MAY 1962

ORGANISED BY THE BRITISH
RACING & SPORTS CAR CLUB

**THE
Motor**

The Complete Motoring Journal
Wednesdays One & Threepence

are
YOU
putting
off
an
evil
day ?

Your car won't last for ever—it loses something of its value every month. An account with Carsavers solves the problem of meeting your depreciation costs. It may be opened at your convenient rate of monthly payment, at any time from 6 months to 3 years before delivery, to continue up to two years after delivery (interest costs on an advantageous scale are payable under deduction of income tax). If you find you do not require the credit facilities, your savings—with interest at up to 5½% per annum according to how far ahead you look—may at any time be withdrawn at 7 days' notice.

This is a field in which time is money—call and see us at our mobile office (between main Grand Stand and Paddock) or mail the coupon today.



TO: CARSAVERS LIMITED, 21/24 Bury Street, St. James's, London, S.W.1. Telephone: TRAfalgar 6131 (9 lines).

Please send me (without obligation) details of the CARSAVERS PLAN.

NAME.....

ADDRESS.....

B.H. 27/5

BLOCK LETTERS, PLEASE (2½d. stamp if unsealed)

National Race Meeting

For Formula Junior Racing Cars, Sports Racing Cars, Touring Cars, Grand Touring Cars.

27th May, 1962

OFFICIALS

Stewards :

FOR THE R.A.C.—
J. H. Kemsley.

FOR THE B.R.S.C.C.—
F. H. Bacon.
J. A. Ellison.
R. M. Carter.

Judges :

L. Lewis-Evans.
G. Lee.
R. L. Wilson.

Clerk of the Course :
N. Syrett.

Secretary of the Meeting :
P. Doughty.

Asst. Clerk of the Course :
D. Buck.

Race Control :

B. H. Crow.
Mrs. B. H. Crow.
Mrs. J. Doughty.
Miss G. Sturgess.
Miss J. Brewster.
Miss R. Elliott.

Timekeepers :

F. A. Lowe.
M. A. Ford.
C. C. Cann
R. Connor.

Race Recorder :

Miss P. Wallis.

Scrutineers :

S. R. Proctor
C. A. A. D. Mitchell.
G. T. R. Meekings.
L. A. Cushman.

Asst. Scrutineer :

A. C. H. Smith.

Commentators :

A. Marsh.
M. Burgess.
K. Douglas.

Chief Observer :
D. Truman.

Chief Marshal :
W. Hartman

Chief Course Marshal :
M. Wright.

Chief Flag Marshal :
D. Sales.

Chief Paddock Marshal :
H. W. Lamkin.

Starter :
C. Greville-Smith.

Chief Start Line Marshal :
B. L. O'Hara.

Chief Pit Marshal :
J. W. Norris.

Medical Officers :

Dr. K. Walker.
Dr. P. Flintan
Dr. E. Phillips.
Dr. R. F. Lippold.
Dr. A. Watts.
Dr. J. Goodchild.

Medical Services :

St. John Ambulance
Brigade.

Marshals :

Members of the
B.R.S.C.C.

Press Officer :

Darryl Reach.

This meeting is organised by
The British Racing & Sports Car Club
6 Buckingham Street, London, W.C.2
Telephone : TRAfalgar 1351-3

BRANDS HATCH CIRCUIT

This meeting is held under the International Sporting Code and General Competition Rules of the Royal Automobile Club and supplementary regulations issued by the British Racing and Sports Car Club.

R.A.C. Permit No. R.499.

For the Attention of Spectators

Please do not leave litter about the grounds—take it with you.

The British Racing & Sports Car Club wish to acknowledge with thanks the valuable assistance given by the individual marshals in conducting this event.

If an accident occurs, leave it to the marshals, the doctor and St. John Ambulance men who are in attendance.

Remember to drive with care and caution when leaving the ground.

To safeguard both competitors and public, *dogs are not admitted unless kept on a leash.* This is most important.

Prohibited Area Notices.—The public are not permitted in the areas where these Notices are displayed. The fences are there for protection, and any person or persons found trespassing, or wilfully damaging trees, fences, etc., will be prosecuted by Brands Hatch Circuit Ltd.

Motorists and Motor-Cyclists—Please retain your Car Park Tickets, as you may be required to produce them upon demand by the Brands Hatch Circuit Police.

Flag Signals

Competitors are reminded of the meaning of the Flags which will be used by the Flag Marshals

UNION JACK	Start
RED	Stop immediately.
YELLOW (Waved)	Great danger; prepare to stop.
YELLOW (Motionless)	Take care; danger.
BLUE (Waved)	Another competitor is trying to overtake.
BLUE (Motionless)	Another competitor is following you closely.
YELLOW (With Vertical Red Stripes)	Oil on the Course.
WHITE	An ambulance or service car on the circuit.
BLACK (With Number)	Car with that number must stop.
BLACK and WHITE CHEQUERED	Signal for End of Race
SPECIAL NOTICE	A car that does not stop when the Red or Black Flag is shown will render the driver of that car liable to a fine of £5.

Condition of Admission

Spectators attending the track do so entirely at their own risk. It is a condition of admission that the Brands Hatch Circuit Limited and all persons having any connection with the promotion and/or organisation and/or conduct of the meeting (including the drivers and owners of vehicles and passengers in vehicles) are absolved from all responsibility and liability whatsoever from negligence, or by accident causing loss, damage or personal injury to spectators or ticket holders, or to their goods or vehicles.

POSTPONEMENT OF THE MEETING

The Club reserves the right to postpone or cancel the meeting.

Programme Timing

Racing		Laps	Start
EVENT 1.	JOHN DAVY TROPHY—Formula Junior Cars	15	12.30 p.m.
EVENT 2.	PECO TROPHY—Grand Touring Cars (over 1000 0c.c.)	10	1.30
EVENT 3.	GROVEWOOD TROPHY—Sports-Racing Cars	25	2.30
EVENT 4.	FARNINGHAM TROPHY—Touring Cars ..	10	3.50
EVENT 5.	PECO TROPHY—Grand Touring Cars (up to 1000 c.c.)	10	4.40

Prizes

EVENT 1.	1st—£30	2nd—£25	3rd—£15	4th—£10	5th—£5
EVENT 2.	1st—£20	2nd—£10	3rd—£5	in each class	
EVENT 3.	£50—Outright Winner				
	1st—£30	2nd—£20	3rd—£10	in each class (except outright winner)	
EVENT 4.	1st—£20	2nd—£10	3rd—£5	in each class	
EVENT 5.	1st—£20	2nd—£10	3rd—£5		

Acknowledgments

OFFICIAL COURSE CAR kindly made available by:
FIELD'S ENGINEERING CO. (CRAWLEY) LTD., The Jaguar XK Centre,
86-92 High Street, Crawley, Sussex. (Crawley 25533)

Starting Positions

GRID POSITIONS IN ALL RACES WILL BE DETERMINED BY THE COMPETITOR'S LAP TIMES
RECORDED BY THE OFFICIAL TIMEKEEPER DURING PRACTICE

GEMS from SLIP No. 2 'MOLYSLIP ON PARADE'

Old etchings scratched from the Chests of Old Racing Drivers, where they were originally painted in Blood by Retired Team Managers (some even as old as 19)

... AND WHATS MORE
I GET 32 d.p.m.
(DERVISHES PER MAGAZINE)
NOW THAT I OIL MY BOLT
WITH M*L*SL*P!

"(THINKS) AFTER ONLY 2 WEEKS PROMOTED TO ABLUTIONS ORDERLY 3rd. CLASS THANKS TO M*L*SL*P - MY HERO!"



WHAT IS MOLYSLIP?

Shame on you! It's the Molybdenum Disulphide oil supplement you add to engine and transmission oils. Moly slip coats working parts with a tough, permanent lubricating 'plating', reducing friction and heat and making parts last longer and performance figures better. Admit it now, you knew it all along. We will send you a free book on the subject if you write—also a free lubrication chart. *You in your turn can go out and buy some of the stuff.*

SLIP SLIP GROUP OF COMPANIES (Molyslip Division)
34, GREAT ST. HELENS, LONDON, E.C.3.
Tel: AVenue 1636 Telex: 23755

BRANDS HATCH ROAD CIRCUIT

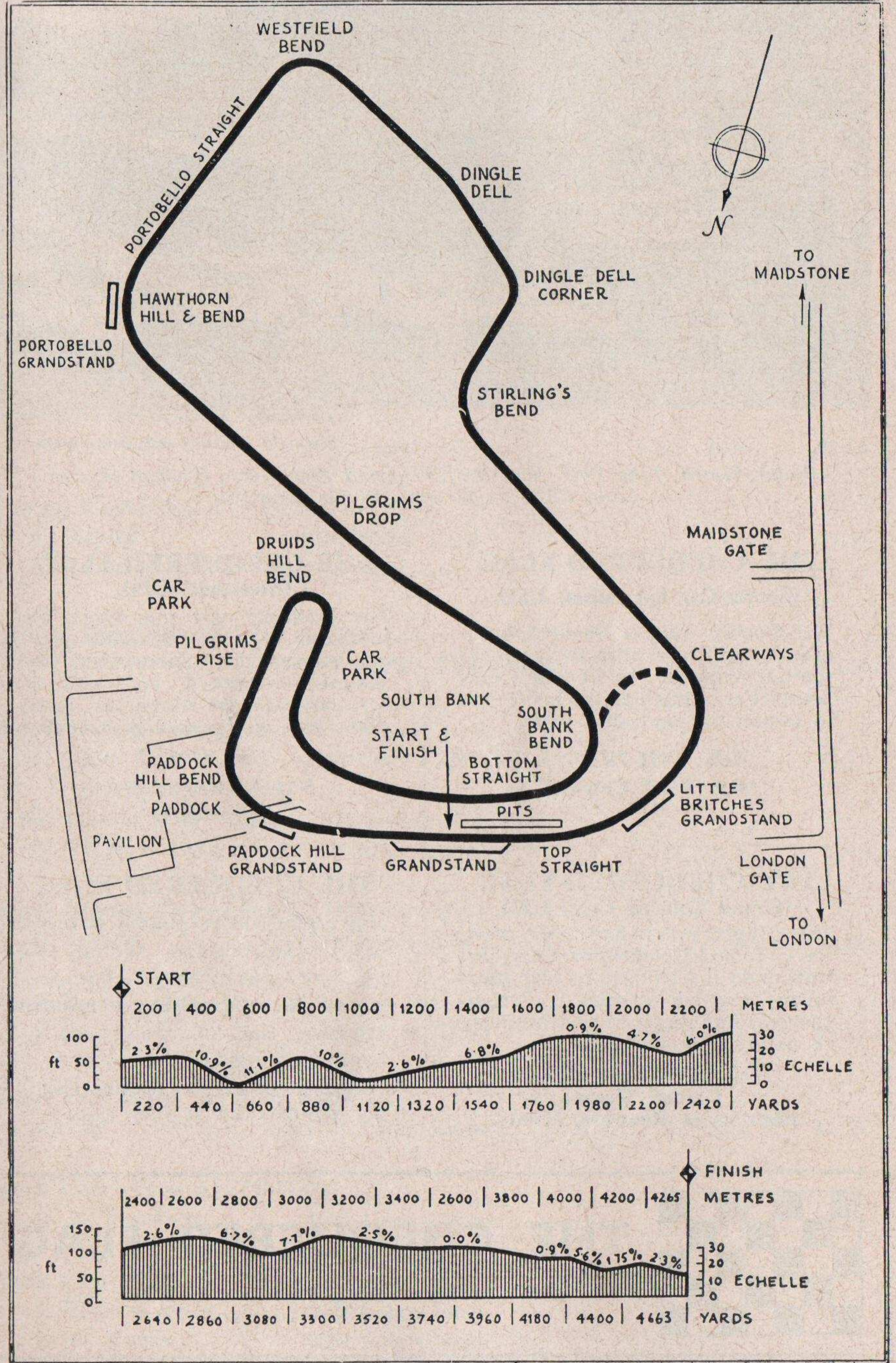




Photo by courtesy of B.P. Limited

Brands Hatch, June 1961, with the Chequered Flag entry, Graham Warner's Lotus Elite, on the right of the front row

**THE CHEQUERED FLAG
(Sports Car Specialists) LTD.**

We proudly offer a hundred hand-picked and very attractively priced sporting vehicles. As London's only Sports Car specialists we invite you to inspect our unrivalled stock.

Tel.: CHI 7871/2/3
High Road, Chiswick,
W.4.

**THE CHEQUERED FLAG
(Grand Touring Cars) LTD.**

The country's first and only centre for G.T. and Competition Cars offer with pride the ultimate in high-speed luxury sporting vehicles. Part-exchanges, hire purchase and insurance all immediately available.

Tel.: EDGware 6171/2
Gemini House,
High Street, Edgware, Middx.

**THE CHEQUERED FLAG
(Midlands) LTD.**

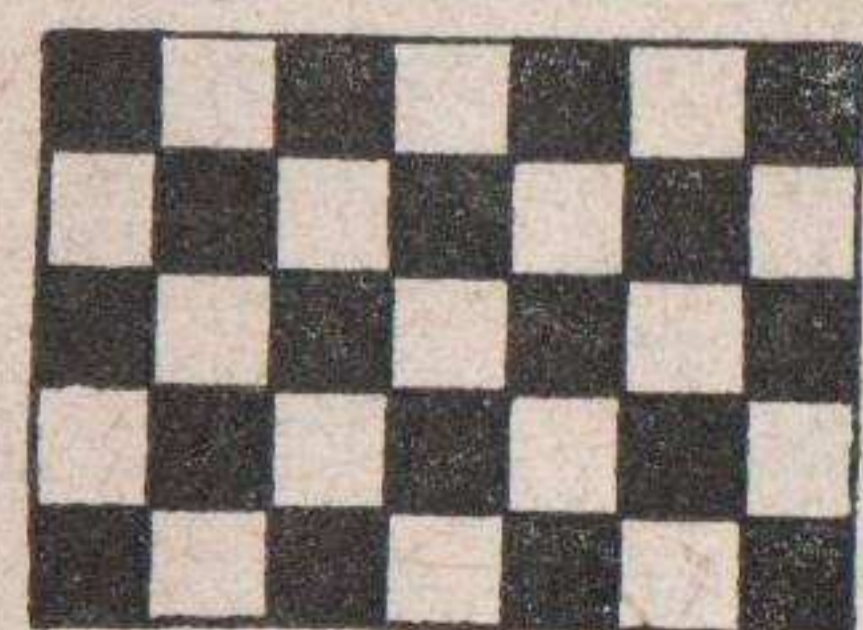
The Midlands only true Sports Car specialists offer an unrivalled selection of some fifty Sports Cars, very competitively priced, and with the best part-exchange allowances, immediate hire purchase and insurance.

Tel.: 89282/3
5-11 Arkwright Street,
Nottingham.

THE CHEQUERED FLAG

Any centre will be pleased to supply any new Sporting Car. We can offer the best part-exchange allowances, immediate hire-purchase, competitive insurance, and of course our renowned after-sales service.

Please call at any Branch and inspect our superb stock at your leisure.



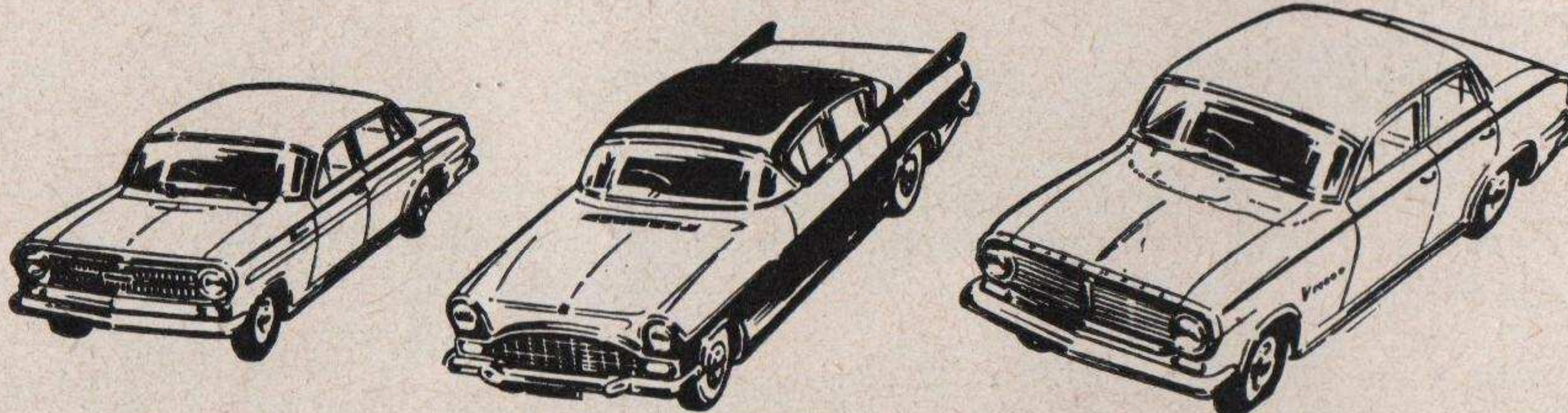
THE CHEQUERED FLAG

The Country's leading Specialists in Sports and Grand Touring Cars

LONG CIRCUIT LAP RECORDS

	c.c.	Car	min.	sec.	m.p.h.
Intercontinental Formula					
B. McLAREN ..	2495	Cooper Climax	1	40.2	95.20
Formula 1					
S. Moss ..	1475	Lotus Climax	1	42.0	93.52
Formula Junior					
TREVOR TAYLOR ..	997	Lotus Ford	1	46.6	89.49
Touring Cars—Class A (over 2600 c.c.)					
M. PARKES ..	3781	Jaguar 3.8	2	00.8	78.97
Touring Cars—Class B (1601-2600 c.c.)					
R. KERRISON ..	2843	Jaguar 2.4	2	11.4	72.60
Touring Cars—Class C (1001-1600 c.c.)					
L. LESTON ..	1583	Volvo 122 S	2	09.4	73.72
E. LEWIS ..	1489	Riley 1.5			
Touring Cars—Class D (up to 1000 c.c.)					
V. ELFORD ..	848	Morris Mini-Minor	2	13.6	71.40
Grand Touring Cars—Class A (over 2600 c.c.)					
S. Moss ..	2953	Ferrari 250 G.T.	1	54.2	83.53
Grand Touring Cars—Class B (1601-2600 c.c.)					
R. SHEPPARD-BARRON	1991	Morgan Plus 4	2	01.6	78.45
Grand Touring Cars—Class C (1001-1600 c.c.)					
L. LESTON ..	1216	Lotus Elite	1	55.8	82.38
Grand Touring Cars—Class D (up to 1000 c.c.)					
J. UREN ..	997	G.S.M. Delta	2	02.6	77.81
Sports Cars—Class A (over 2000 c.c.)					
G. LEE ..	3781	Lister Jaguar	1	54.4	83.39
Sports Cars—Class B (1301-2000 c.c.)					
R. F. PIERPOINT	1960	Lotus Climax	1	53.8	83.83
Sports Cars—Class C (up to 1300 c.c.)					
P. BOSHER-JONES	1098	Lola Climax	1	53.8	83.83
L. W. KEENS ..	1098	Lola Climax			

Vauxhalls lead the field



VX/490

Cresta

Victor

See them all at

Western Motor Works

Perry Street
CHISLEHURST
FOO 1122

Princes Road
DARTFORD
24721

- Jack Brabham
- Stirling Moss
- Innes Ireland
- Bruce McLaren
- Roy Salvadori
- Jim Clark
- Graham Hill
- Peter Arundel
- John Surtees
- Trevor Taylor
- Jo Bonnier
- Willy Mairesse
- Lucien Bianchi
- Dan Gurney
- Giancarlo Baghett
- Pedro Rodriguez
- Ricardo Rodriguez
- Lorenzo Bandini
- Walter Hansgen
- Ritchie Ginther
- Phil Hill



Innes Ireland with his Les Leston gloves after winning the Grand Prix of the U.S.A., 1961.

They all look to **Les Leston**, manufacturer of the world's finest Wood Rim Steering Wheels, Crash Helmets, Overalls, Gloves, Boots and Shoes, Goggles, etc. etc. Plus many exciting accessories for YOUR car.



LES LESTON LTD 314 High Holborn London WC1 CHAncery 8655-6

LE MANS TO BRANDS HATCH

by ALAN BRINTON

Editor of 'MOTOR RACING'

AT 2.30 this afternoon you should be treated to a practical and exciting demonstration of technical progress in automobile engineering.

As you will no doubt remember, 'D' type Jaguars scored a hat-trick at Le Mans in 1955, 1956 and 1957. In those days these specially designed sports-racing cars were the envy of the competition world.

Since then, of course, the whole concept of sports-racing car design has changed, and today we find the accent on ultra-light space-frame machines with rear engines and phenomenal road-holding qualities.

VISIT THE NEW BRANDS HATCH SHOPS

- * B.R.S.C.C. INFORMATION CENTRE
- * MOTOR CYCLING CLOTHING * ACCESSORIES
- * BRANDS HATCH TRANSFERS AND PENCILS
- * MODELS, BOOKS, MAGAZINES, AND FILMS

**Between the Main Grandstand
and the Paddock**

DON'T MISS

BRITAIN'S GREATEST SPORTS CAR RACE

THE GUARDS TROPHY

INTERNATIONAL

on AUGUST BANK HOLIDAY

Many of the World's top-line drivers in
FERRARIS · JAGUARS · ASTON MARTINS
COOPERS · LISTERS · LOTUSES · ELVAs



Photograph by courtesy of John F. Whitmore, Castrol Ltd.

Christabel Carlisle acknowledges the cheers from the Brands Hatch crowd after winning the ladies' race on August 27 last year. Today she drives one of the nine Mini-Coopers contesting in the Farningham Trophy race.

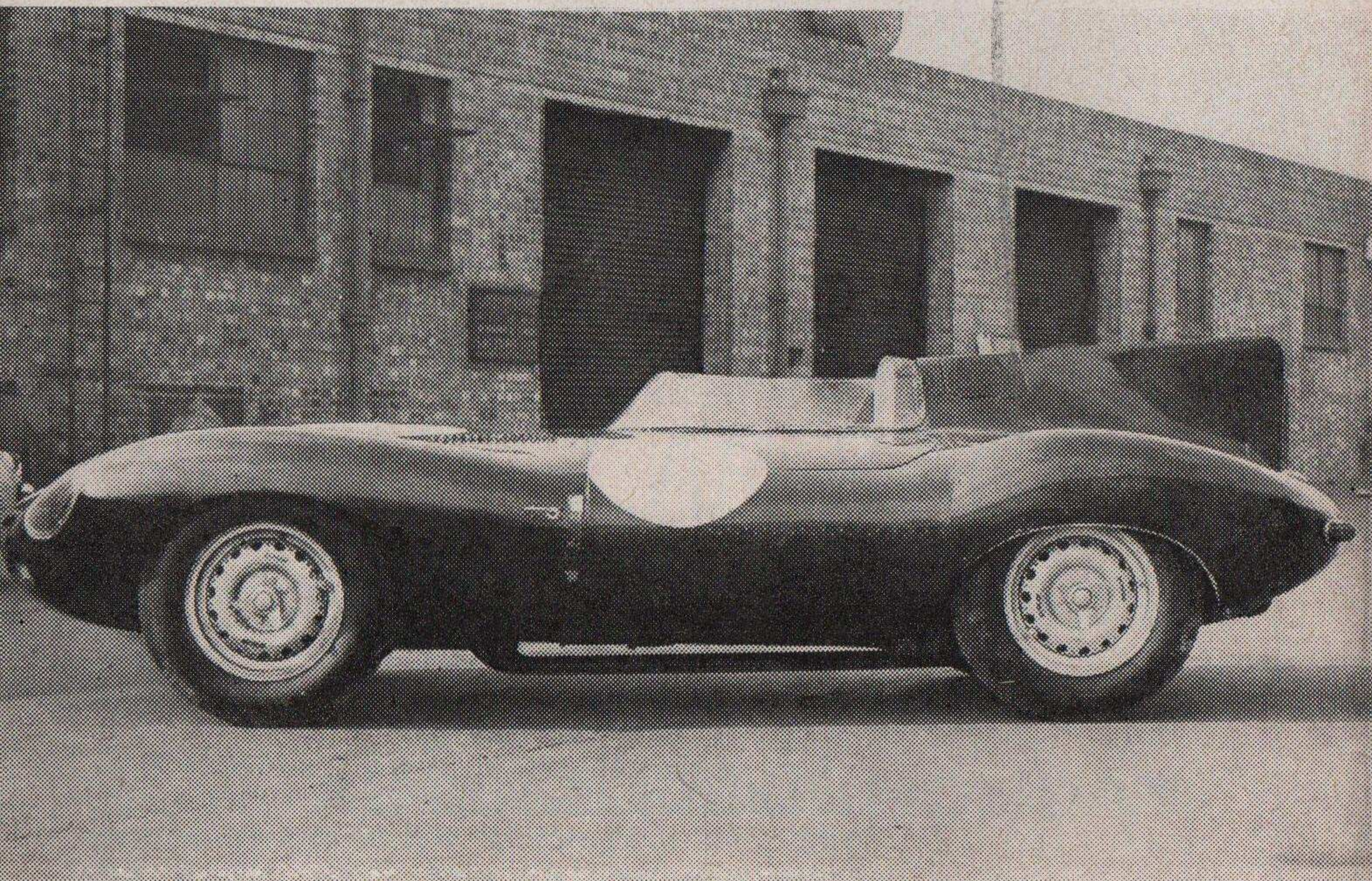
On a circuit such as Brands, with its challenging corners and comparatively short straights, the 'D' type is now at something of a disadvantage against its more nimble opponents. But no-one would dispute that these 'monsters' are a glorious sight when being driven on the limit—and what a wonderful noise they make!

Few of the thousands around the circuit today will fail to be thrilled by the 'D' types. But many with technical knowledge will be agog to see their battle with the 'E' type Jaguar which Roy Salvadori is due to drive.



Photograph by courtesy of Alan Green

Roy Salvadori, in the 'E' Type Jaguar of John Coombs, which he is driving at Brands Hatch today, gets an initial lead from Graham Hill's Equipe Endeavour car at the start of the GT race on August Bank Holiday last year.



Photograph by courtesy of 'MOTOR RACING'

This view of one of the latest 'D-' type sports-racing Jaguars shows that there is a marked similarity between this car and the current 'E' type. The big question today is: 'Which car will prove the quicker?'

Here we have a car which is a direct derivative of the Le Mans winners, but which has been developed primarily as a luxurious, fast touring car. Though it still uses the famous twin-overhead-camshaft engine, it incorporates many design improvements. Notable among these is the independent rear suspension (also used on the Mark 10), and this should give the 'E' type a marked advantage through the corners.

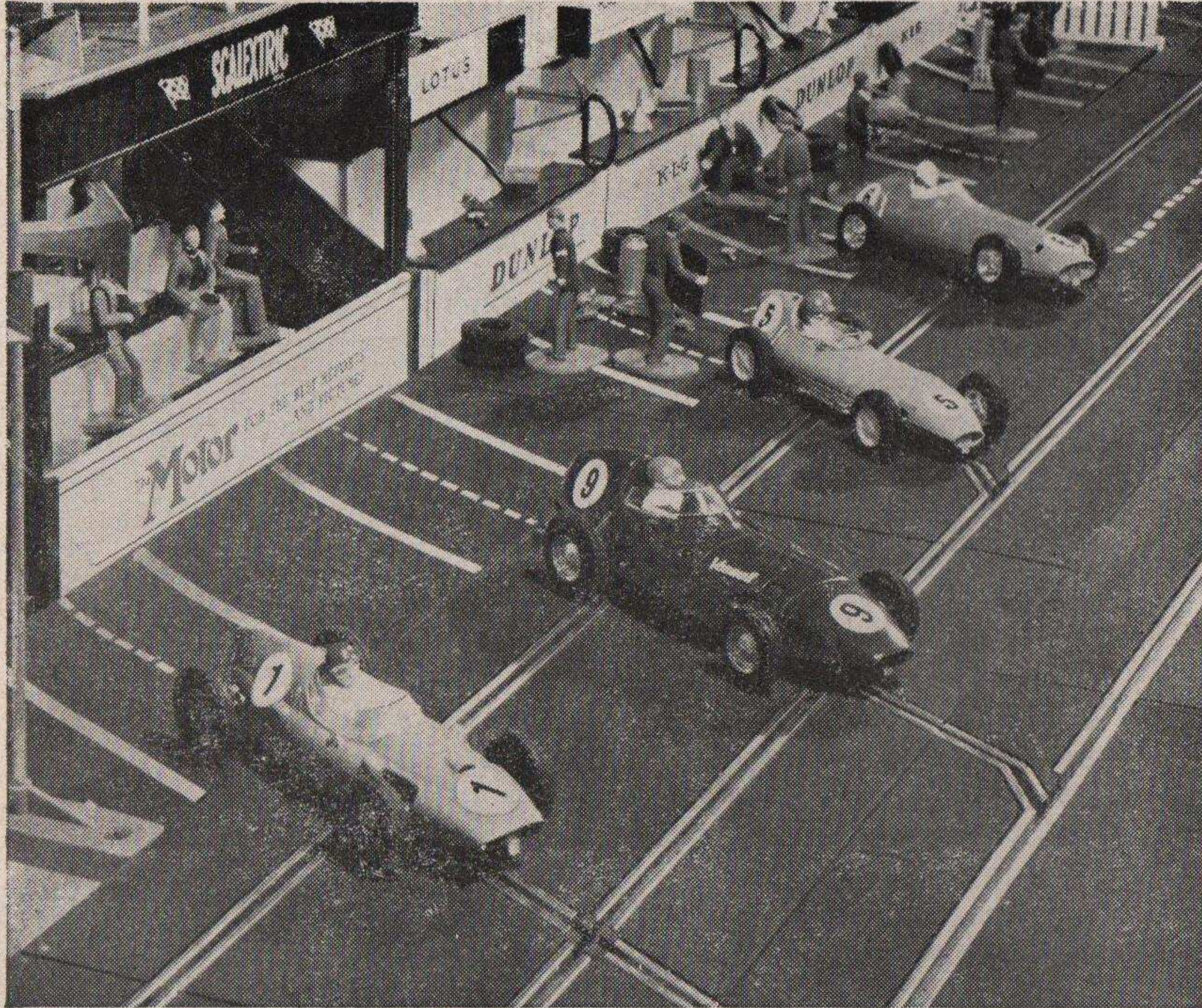
But it will be fascinating to discover whether a car of today built for fast road touring is capable of taking on and beating machines built for racing only a few years ago.

There is a lot of interest in the field for the 25-lap Grovewood Trophy race on the full 2.65 miles circuit. Look out for Dizzy Addicott's Lotus-Buick, with its pronounced power bulge hiding a 3½ litre 240 horsepower all-aluminium V8 engine. The basis of this fearsomely powerful machine is a Lotus 15, but the frame has been extensively modified to house the American engine and Jaguar XK gearbox.

With all this power, this is not the easiest of cars to handle on a track like Brands. But it is a car of considerable potential. MOTOR RACING'S associate editor, John Blunsden, was track-testing it on the club circuit here a few days ago, and was getting round in under a minute after only a few laps of acclimatisation. Dizzy thinks that on a completely dry track his car would comfortably break the current short-circuit sports car record of 57.4 seconds.

Some good opposition should come from Roy Pierpoint's Lotus 15, and the Cooper Monacos of Jimmy Blumer and John Woolfe, all fitted with 2 litre Coventry Climax engines. In the smaller class the main contenders should be a quartet of the new Lotus 23s, which will be ranged against a works Elva Mark 6 fitted with a 1,220 c.c. Climax engine and driven by Bill Moss.

The Grovewood Trophy presents a wonderful cross section of sports-racing machinery. Indeed, it is doubtful whether such a varied and interesting field has been lined up for a sports car race in this country for several years.



Tri-ang present SCALEXTRIC

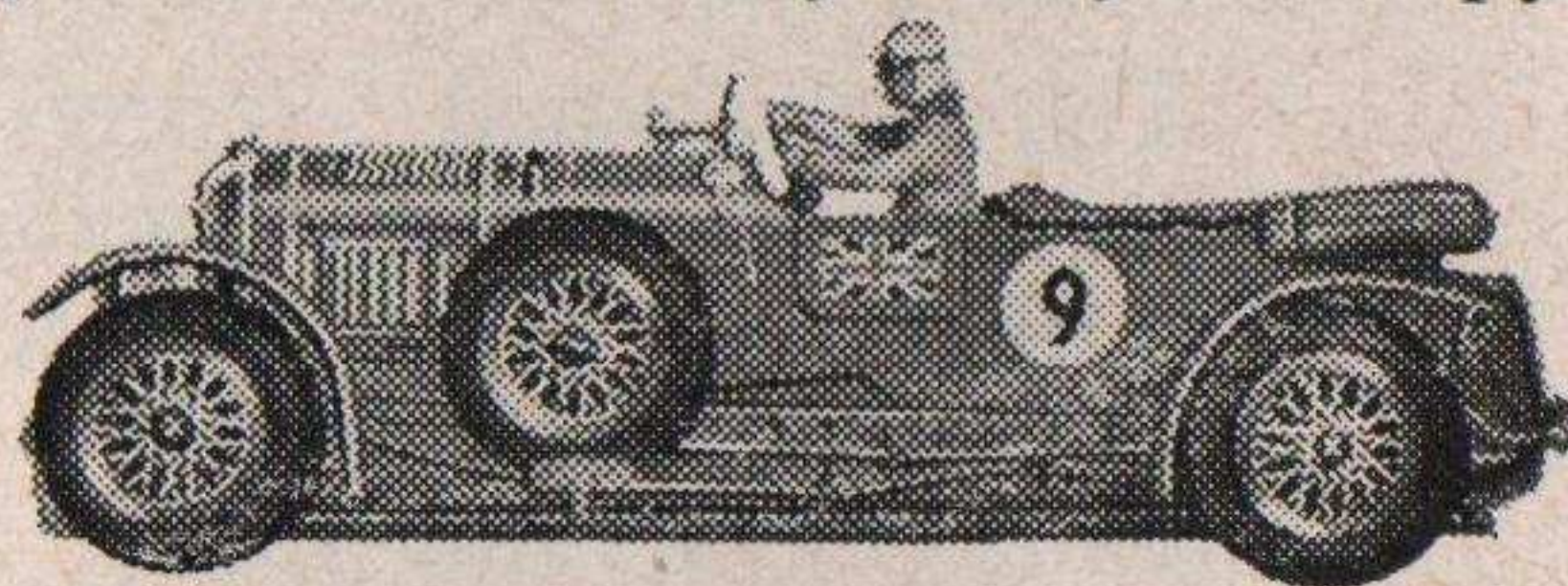
REGD.

The world's most comprehensive electric model motor racing system!



Scalextric is the model motor racing system that comes closest to the real thing! There are a host of exclusive features; automatic lap counting, working public address system, cars with lights and track lighting for night racing, and—latest addition to the range—authentic vintage car models and motor cycle/side car combinations.

Call at your nearest toyshop or Sports dealer today for your copy of the Scalextric catalogue (price 9d.). See what a wonderfully realistic and exciting model system this is!



EVENT ONE

JOHN DAVY TROPHY

*For single-seater racing cars complying with the International Formula Junior
A qualifying event for the 1962 John Davy Championship*

START 12.30 p.m.

15 LAPS

No.	Entrant and Driver	Car	c.c.
32	Auto Racing Service (Dvr.: J. R. Pearce)	Lotus-Ford '22'	1100
33	A. R. Wyllie	Lotus-Ford '22'	1100
34	Ron Harris (Dvr.: J. E. Fenning)	Lotus-Ford '20'	1100
36	M. Niven	Lotus-Ford '20'	1100
37	W. G. Heathcote	Lotus-Ford '20'	1100
38	D. E. Fletcher	Lotus-Ford '20'	1000
39	Jim Russell Racing Drivers' School (Dvr.: M. Gould)	Lotus-Ford '20'	1100
40	Jim Russell Racing Drivers' School (Dvr.: J. Mastin)	Lotus-Ford '20'	1100
41	R. Banting	Lotus-Ford '20'	1000
42	A. E. Prince	Lotus-Ford '18'	1000
43	Midland Racing Partnership (Dvr.: W. Bradley)	Cooper-Ford Mk. 3	1100
44	Midland Racing Partnership (Dvr.: D. P. Baker)	Cooper-B.M.C. Mk. 2	1100
45	Midland Racing Partnership (Dvr.: J. Cottrell)	Cooper-B.M.C. Mk. 2	1000
46	D. Coode	Cooper-B.M.C. Mk. 2	1100
47	The Chequered Flag Ltd. (Dvr.: P. R. Procter)	Gemini-Ford Mk. 4	1100
48	The Chequered Flag Ltd. (Dvr.: W. F. Moss)	Gemini-Ford Mk. 4	1100
49	A. Stappers	Gemini-Ford Mk. 3	1100
50	Scuderia Light Blue (Dvr.: H. P. K. Dibley)	Lola-Ford Mk. 3	1100
51	Babs Racing Team (Dvr.: D. Austin)	Elva-Ford	1000
52	I. E. Raby	Merlyn-Ford	1100
53	M. Fruitnight	Merlyn-Ford	1100
54	M. F. Braby (Dvr.: A. Powell or J. Turner)	Emeryson-Ford	1100
55	R. G. Pike	Ausper-Ford T/3	1100
56	H. W. Owen (Dvr.: L. D. Marshall)	Terrier-Ford	1100
57	R. Krochunas	Saxon-Auto Union	1000
58	Competition Cars of Australia Ltd. (Dvr.: J. Rhodes)	Ausper-Ford	1100
138	Jack Brabham Motors Ltd. (Dvr.: F. Gardner)	Brabham Ford	1100
139	Jack Brabham Motors Ltd. (Dvr.: G. Youl)	Brabham Ford	1100

RESULTS:

1st.....	58	2nd.....	138	3rd.....	34
4th.....	52	5th.....	32	6th.....	

Winner's Time Speed .. 83 m.p.h.

Fastest Lap : Car No. Time Speed m.p.h.

60 137 61 62
6 75 74



RESEARCH PROVIDES THE ANSWER TO SPEED-TUNING WITH GREATER ECONOMY AND NO EXTRA ENGINE WEAR

78 80 83 77 79
72



59 69 66 73
64 65 76 67

PECO is Britain's largest manufacturer and exporter of Speed Tuning Equipment. PECO Tuning is universally acclaimed as the best way to performance increase without engine damage. PECO bolt-on tuning equipment does not depend on air flow to give an "extractor" effect—air is introduced into the mixing chamber merely to deal with pulse effects as described in our technical literature. DO NOT DISMISS PECO AS "JUST AN EXTRACTOR". PECO Tuning methods are protected by world-wide patents and cannot be copied. Regardless of claims to the contrary, no other device does, or can, incorporate the PECO patent tuning method. The more up to date your engineering knowledge, the more you will appreciate PECO's methods of dealing with what has previously been a major exhaust system design problem. PECO equipment is fully guaranteed and has been developed within our own engineering group by our own staff after many year's research work using the latest electronic equipment.

PERFORMANCE EQUIPMENT CO LTD



Head Office and Birkenhead Factory: SANDFORD STREET BIRKENHEAD Telephone: BIRKENHEAD 6041 P.B.X.

PLEASE SEND ME FULL DETAILS OF ALL PECOPHASE PRODUCTS

NAME _____

ADDRESS _____

EVENT TWO
PECO TROPHY (a)

137
77L
59L
64L
72L
62nd
69L
618nd
62nd
74
65L
75
67
66
81
76
83
60
78
137

For Grand Touring Cars complying with Appendix 'J' (1962) Group 3 to the International Sporting Code
A qualifying event for the 1962 Peco and Autosport Championships

START 1.30 p.m. 10 LAPS

No.	Entrant and Driver	Car	c.c.
Class A—Over 3000 c.c.			
6	John Coombs (Dvr.: R. Salvadori)	Jaguar E-Type ASTON ZAGATO	3781
59	M. Charles	Jaguar E-Type	3781
60	Warnell Motors Ltd. (Dvr.: K. Baker)	Jaguar E-Type	3781
61	Protheroe Cars Ltd (Dvr.: E. R. Protheroe)	Jaguar E-Type	3781
62	R. Winklemann (Racing) Ltd. (Dvr.: D. M. Collins)	Chevrolet Corvette	5359
63	M. Salmon	Aston Martin Zagato	3670
Class B—1601 c.c. to 3000 c.c.			
137	U.D.T.-Laystall Racing Team (Dvr.: I. Ireland)	Ferrari 250 G.T.O.	2953
64	S.A.H. Accessories (Dvr.: N. H. Dangerfield)	Triumph TR4	2138
65	E. R. Duggan	Morgan Plus Four	2138
67	C. W. P. P. Pickard	Morgan Plus Four	1991
66	J. F. Sach	Morgan Plus Four	1991
68	Central Motors (Sheffield) Ltd. (Dvr.: J. B. Rodgers)	Morgan Plus Four	1991
69	R. C. Burnard	A.C. Ace-Bristol	1971
70	Postland Engineering & Trading Co. Ltd. (Dvr.: W. Banks)	A.C. Ace-Bristol	1971
72	D. Morgan	A.C. Ace-Bristol	1971
		T.V.R. Grantura	1622
Class C—1001 c.c. to 1600 c.c.			
73	S. J. Scrimgeour	Sunbeam Alpine	1494
74	Gener Engineering (Dvr.: W. J. Shaw)	Lotus Elite	1216
75	M. B. Johnson	Lotus Elite	1216
76	P. Jopp	Lotus Elite	1216
77	T. J. Threlfall	Lotus Elite	1216
78	R. Fores	Lotus Elite	1216
79	Ecurie R.C.S. (Dvr.: A. D. Bennett)	Lotus Elite	1216
80	A. B. Fraser (Dvr.: T. A. Crawford)	Lotus Elite	1216
81	R. D. Nathan	Lotus Elite	1216
82	Alexander Engineering Co. Ltd. (Dvr.: K. W. Mackenzie)	Alexander-Turner GT	1216
83	J. H. Gaston	Austin Healey Sprite s/c	994

RESULTS:

OVERALL WINNER 137

Class A 1st. 137 2nd. 61 3rd. 62 Class B 1st. 137 2nd. 80 3rd. 83

Class C 1st. 137 2nd. 75 3rd. 81

Winner's Time 19.13.8 Speed 82.68 m.p.h.

Fastest Lap: Car No. 137 Time 1.52.0 Speed 83.68 m.p.h.

24 22 21 12
7 19 1
11 14 15 20
25 2
18 31 30

See the top T.T. riders
and Works Teams
in the BRANDS HATCH

2000 GUINEAS

MOTOR CYCLE RACE MEETING

ON

Whit Monday, June 11th

Including THE REDEX TROPHY RACE
for 500 c.c. Solo Machines

Fixtures for 1962

CARS

MOTOR CYCLES

Trio Meeting	July 1	*INTERNATIONAL TWO THOUSAND GUINEAS (Whit Monday)	June 11
*B.R.S.C.C. INTERNATIONAL	Aug. 6	*National Meeting	July 8
B.R.S.C.C. Club Meeting	Aug. 26	*National Meeting	Aug. 19
*B.R.S.C.C. INTERNATIONAL	Oct. 6	*National Meeting	Sept. 23
B.R.S.C.C. Boxing Day Meeting	Dec. 26	*National Meeting	Oct. 14

*Long Circuit

THE NEXT CAR MEETING — SUNDAY, 1st JULY

FOR YOUR NEW OR USED STANDARD • TRIUMPH
JAGUAR • AUSTIN • ROVER

RICHARDS of BEXLEYHEATH

ARE THE BEST FOR

SALES * SERVICE * SATISFACTION

W. T. RICHARDS (BEXLEYHEATH) LTD 74-78 BROADWAY & MARKET PLACE, BEXLEYHEATH
TELEPHONE: BEXLEYHEATH 6363 (4 lines)

EVENT THREE
THE GROVEWOOD TROPHY

For sports-racing cars complying with Appendix 'C' (1959 or later) to the
International Sporting Code

A qualifying event for the 1962 "Autosport" Championship

START 2.30 p.m.

25 LAPS

No.	Entrant and Driver	Car	c.c.
Class A—Over 2000 c.c.			
1	P. H. Sutcliffe	Jaguar D-Type ..	3781
2	R. F. G. Wrottesley (Dvr.: D. G. R. Wansbrough)	Jaguar D-Type ..	3781
3	M. Charles	Jaguar D-Type ..	3442
4	Woodbourne Racing (Dvr.: J. R. M. Boothby)	Jaguar D-Type ..	3442
5	P. F. Skidmore	Jaguar D-Type ..	3442
6	John Coombs (Dvr.: R. Salvadori) ..	Jaguar E-Type ..	3781
7	J. Coundley	Lister-Jaguar ..	3781
8	J. Coundley (Dvr.: R. W. de Selincourt)	Lister-Jaguar ..	3781
9	Ted Whiteaway (Dvr.: M. Pendleton) ..	Lister-Jaguar ..	3442
10	D. G. Addicott	Lotus-Buick '15'	3524
11	P. Jopp	Aston Martin DBR1	2992

Class B—1301 c.c. to 2000 c.c.

12	Roseberry Service Station (Dvr.: J. Blumer)	Cooper-Climax Monaco	1960
14	R. F. Pierpoint	Lotus-Climax '15'	1960

Class C—Up to 1300 c.c.

15	Elva Cars (1961) Ltd. (Dvr.: W. F. Moss)	Elva-Climax Mk. 6	1216
16	T. P. Hart (Reserve)	Lola Climax ..	1216
17	Arvin Developments (Dvr.: C. T. Steele)	AD Sportive-Climax	1150
18	P. L. Hovenden	Lotus-Climax '11'	1098
19	A. Kilburn	Lotus-Climax '11'	1098
20	Dr. E. H. M. Paul	Lotus-Climax '11'	1098
21	Normand Ltd. (Dvr.: M. G. Beckwith) ..	Lotus-Ford '23'	1097
22	Sports Motors (Manchester) Ltd. (Dvr.: R. Bloor)	Lotus-Ford '23'	1097
23	N. A. P. Garbett	Lotus-Ford '23'	1097
24	L. W. Keens	Lotus-Ford '23'	1097
25	A. V. Hegbourne	Lola-Climax ..	1098
26	S. A. Fox	Lola-Climax ..	1098
27	Team Springbok (Dvr.: W. G. Ferguson) (Reserve)	Lola-Climax ..	1098
28	H.G.M. Speed Equipment & Engineering Ltd. (Dvr.: R. W. Waters) (Reserve)	Lola-Climax ..	1098
29	T. Lanfranchi	Elva-Climax Mk. 6	1098
30	Ecurie Freeze (Dvr.: T. Bone)	Gilby-Climax ..	1098
31	P. B. Ross-Tuppitt	Rejo-Climax Mk. 4	1098

LAP CHART EVENT THREE

L A P S																			
POS. ▼	1	2	3	4	5	6	7	8	9	10	11	12	13	14	15	16	17	18	19
1	12																		
2	15																		
3	21																		
4	22																		
5	1																		
6	11																		
7																			
8	14																		
9	25																		
10	3																		
11	16																		
12	24																		
13	20																		
14	23																		
15	23																		
16	9																		
17	2																		
18	5																		
19	31																		
20	4																		
21	30																		
22	18																		
23	21																		
24																			

LAP CHART EVENT THREE

L A P S					
20	21	22	23	24	25

RESULTS: _____

OVERALL WINNER 12/21/20/19/7

CLASS A

1st..... 2nd..... 3rd.....

Winners Time..... Speed.....m.ph.

Fastest Lap:
Car No..... Time..... Speed.....m.ph.

CLASS B

1st..... 2nd..... 3rd.....

Winners Time..... Speed.....m.ph.

Fastest Lap:
Car No..... Time..... Speed.....m.ph.

CLASS C

1st..... 2nd..... 3rd.....

Winners Time..... Speed.....m.ph.

Fastest Lap:
Car No..... Time..... Speed.....m.ph.

EVENT FOUR

THE FARNINGHAM TROPHY

For Touring Cars complying with Appendix 'J' (1962) Groups 1 and 2 to the International Sporting Code

START 3.50 p.m.

10 LAPS

No.	Entrant and Driver	Car	c.c.
Class A—Over 3000 c.c.			
110	Alexander Engineering Co. Ltd. (Dvr.: P. G. Sachs)	Chevrolet Chevy II	5359
111	Alexander Engineering Co. Ltd. (Dvr.: C. C. Kelsey)	Chevrolet Chevy II	5359
112	John Coombs (Dvr.: R. Salvadori)	Jaguar Mk. 2	3781
114	Sir G. Baillie	Jaguar Mk. 2	3781
116	Bracknell Motors Ltd. (Dvr.: P. Dodd)	Jaguar Mk. 2	3781
Class B—2001 c.c. to 3000 c.c.			
117	The Gryphon Stable (Dvr.: J. G. Sutton)	Vauxhall Velox	2651
118	Equipe Rouge (Dvr.: D. A. N. Byrne)	Mercedes-Benz 220SEb	2195
Class C—1001 c.c. to 2000 c.c.			
119	A. B. Fraser	Sunbeam Rapier	1592
120	A. B. Fraser (Dvr.: P. Jopp)	Sunbeam Rapier	1592
121	A. B. Fraser (Dvr.: T. A. Crawford)	Sunbeam Rapier	1592
122	Postland Engineering & Trading Co. Ltd. (Dvr.: W. Banks)	Vauxhall VX4/90	1508
123	J. K. Bell	Vauxhall VX4/90	1508
124	N. T. Lawrence	Borgward Isabella TS	1493
125	J. Lovett	Borgward Isabella TS	1493
140	Westover Racing Team (Dvr. E. Lewis)	Riley 1.5	1489
126	T. H. Shaddick Ltd. (Dvr.: T. H. Shaddick)	Simca Montlhery	1290
Class D—Up to 1000 c.c.			
127	Don Moore (Miss C. Carlisle)	Austin Mini-Cooper	997
128	A. D. Rutt	Austin Mini-Cooper	997
129	Scottish Clubman Ltd. (Dvr.: W. A. Borrowman)	Austin Mini-Cooper	997
131	G. C. Burrows	Austin Mini-Cooper	997
132	Alexander Engineering Co. Ltd. (Dvr.: M. H. Clare)	Morris Mini-Cooper	997
133	J. D. Lewis	Morris Mini-Cooper	997
134	J. B. M. J. Maas	Morris Mini-Cooper	997
135	M. Cremer (Dvr.: I. Cremer)	Morris Mini-Cooper	997
136	J. R. Barrett	Austin Seven	848

RESULTS :

OVERALL WINNER 111 20.1.8 79.38

Class A	1st. 111	2nd. 112	3rd. 114	Class C	1st. 140	2nd. 119	3rd. 120
Class B	1st. 118	2nd. 117	3rd.	Class D	1st. 127	2nd. 132	3rd. 128

Winner's Time 20.18 Speed 79.38 m.p.h. 27.4

Fastest Lap : Car No. 117 Time 1.58.8 Speed 80.30 m.p.h.

EVENT FIVE

PECO TROPHY (b)

For Grand Touring Cars complying with Appendix 'J' (1962) Group 3 to the International Sporting Code

A qualifying event for the 1962 Peco and Autosport Championships

START 4.40 p.m.

10 LAPS

No.	Entrant and Driver	Car	c.c.
84	Paddy Gaston (Dvr.: B. A. Wood)	Austin Healey Sprite	994
85	J. E. Roythorne	Austin Healey Sprite	948
86	C. Baker	Austin Healey Sprite	994
87	Mrs. J. Freeman	Austin Healey Sprite	998
88	M. Garton	Austin Healey Sprite	948
89	Edgware Racing Stables (Dvr.: R. Dewar)	Austin Healey Sebring Sprite	998
90	Monocoque Body & Chassis Co. Ltd. (Dvr.: J. Hine or R. N. Prior)	Marcos GT	997
91	Monocoque Body & Chassis Co. Ltd. (Dvr.: G. W. John)	Marcos GT	997
92	Equipe Rouge (Dvr.: C. McLaren)	Marcos GT	997
93	Equipe Rouge (Dvr.: T. Weber)	Marcos GT	997
94	S. J. C. Minoprio	Marcos GT	997
95	Ecurie Freeze (Dvr.: J. Oliver)	Marcos GT	997
96	Team Turner (Dvr.: B. Bennett)	Turner '950'	948
97	Team Turner (Dvr.: R. J. Seabrook)	Turner '950'	948
98	K. A. Price	Alexander-Turner	994
99	J. McKechnie	Morgan 4/4	997
100	The Chequered Flag Ltd. (Dvr.: To be nominated)	Cooper-Ogle	997
101	Winspeed Speedequipment (Dvr.: K. G. Holland)	G.S.M. Delta	997
102	G. Kennedy	G.S.M. Delta	997
103	Jamaica Racing (Dvr.: P. Jackson)	Austin Healey Sprite	994

RESULTS :

1st..... 2nd..... 3rd.....

4th..... 5th..... 6th.....

Winner's Time Speed m.p.h.

Fastest Lap : Car No. Time Speed m.p.h.

FOR YOUR NEW OR USED STANDARD • TRIUMPH
JAGUAR • AUSTIN • ROVER

RICHARDS of BEXLEYHEATH

ARE THE BEST FOR

SALES ✨ SERVICE ✨ SATISFACTION

W. T. RICHARDS (BEXLEYHEATH) LTD 74-78 BROADWAY & MARKET PLACE, BEXLEYHEATH
TELEPHONE: BEXLEYHEATH 6363 (4 lines)

B.R.S.C.C.

Patron: The Rt. Hon. THE EARL HOWE, P.C., C.B.E., V.D.

General Secretary:
N. Syrett.

6, Buckingham Street, London, W.C.2.
Trafalgar 1351.

APPLICATION FOR MEMBERSHIP

Name in full
(BLOCK LETTERS)

Address

Occupation

Tel. No. Home..... Office.....

Nationality..... Date of Birth.....

I hereby make application to become a member of the British Racing & Sports Car Club Limited and if elected, I undertake to abide by the Rules of the Club.

I enclose herewith my cheque or money order for the Annual Subscription of £2.2.0., together with Entry Fee of £1.1.0.

Signature..... Date.....

We, the undersigned, being fully paid up members of the British Racing & Sports Car Club Ltd., have a personal knowledge of the above applicant and consider him to be a fit and proper person to become a member of the British Racing & Sports Car Club Ltd.

Proposer..... Secunder.....

If the applicant does not know any member to sign above, please state below the name and address of a responsible person to whom reference may be made.

Name..... Occupation.....

Address

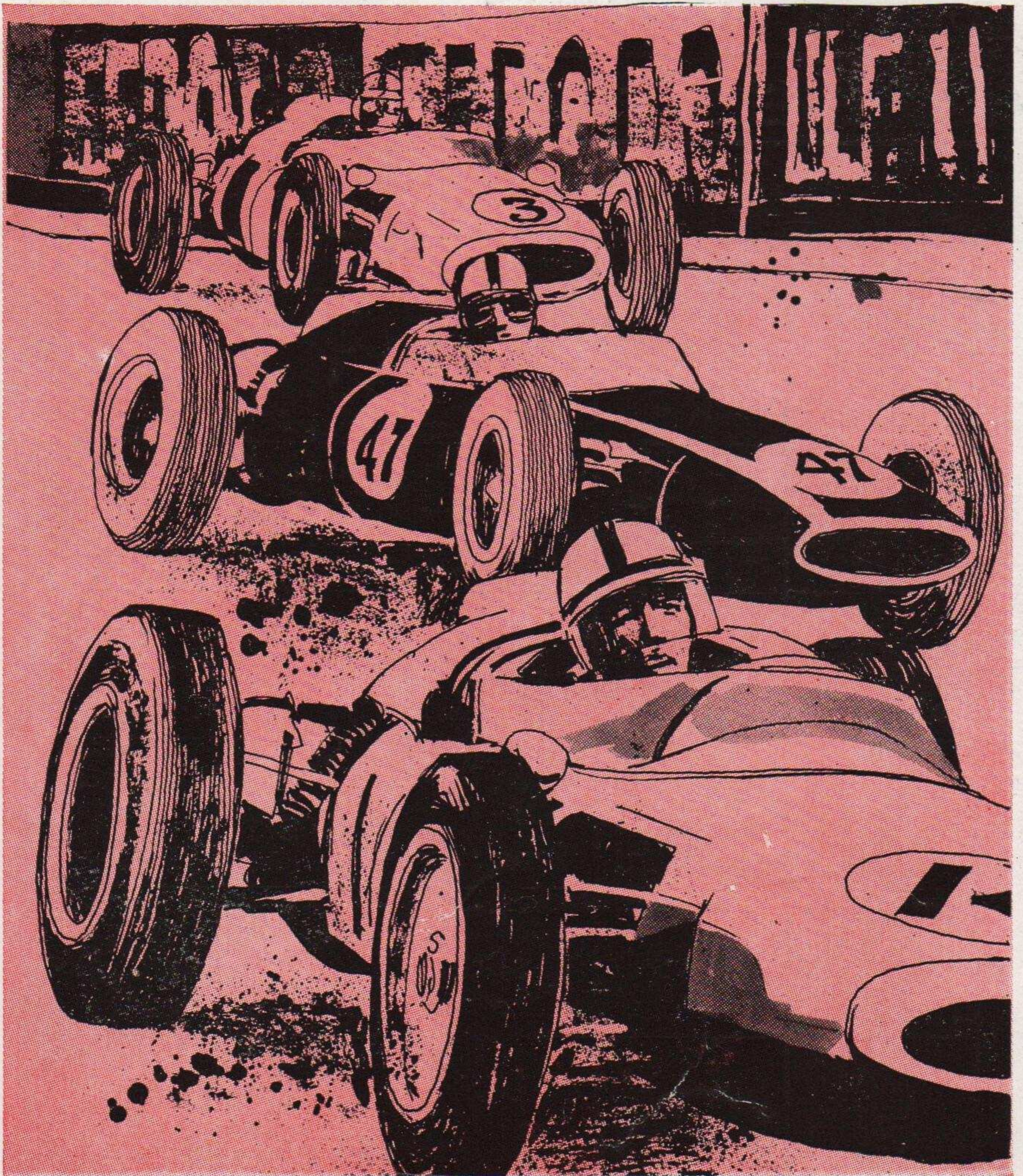
Call at the B.R.S.C.C. Shop (near the Paddock) for further details of membership and the famous Club Insignia

BRANDS HATCH LAP SPEED TABLE

1 Lap = 2.65 Miles

TIME	SPEED	TIME	SPEED	TIME	SPEED	TIME	SPEED	TIME	SPEED
M. S.	m.p.h.	M. S.	m.p.h.	M. S.	m.p.h.	M. S.	m.p.h.	M. S.	m.p.h.
.8	69.73	.8	74.06	.8	78.97	.8	84.57	.8	91.03
.6	69.83	.6	74.18	.6	79.10	.6	84.72	.6	91.20
.4	69.94	.4	74.29	.4	79.23	.4	84.87	.4	91.38
.2	70.04	.2	74.41	.2	79.36	.2	85.02	.2	91.56
2/160	70.14	2/08.0	74.53	2/00.0	79.50	1/52.0	85.17	1/44.0	91.73
.8	70.25	.8	74.64	.8	79.63	.8	85.33	.8	91.90
.6	70.35	.6	74.76	.6	79.76	.6	85.48	.6	92.08
.4	70.45	.4	74.88	.4	79.89	.4	85.63	.4	92.26
.2	70.56	.2	75.00	.2	80.03	.2	85.79	.2	92.44
2/15.0	70.66	2/07.0	75.11	1/59.0	80.16	1/51.0	85.94	1/43.0	92.62
.8	70.77	.8	75.23	.8	80.30	.8	86.10	.8	92.80
.6	70.87	.6	75.35	.6	80.43	.6	86.25	.6	92.98
.4	70.98	.4	75.47	.4	80.57	.4	86.41	.4	93.16
.2	71.08	.2	75.59	.2	80.71	.2	86.56	.2	93.34
2/14.0	71.19	2/06.0	75.71	1/58.0	80.84	1/50.0	86.72	1/42.0	93.52
.8	71.30	.8	75.83	.8	80.98	.8	86.88	.8	93.71
.6	71.40	.6	75.95	.6	81.12	.6	87.04	.6	93.89
.4	71.51	.4	76.07	.4	81.26	.4	87.20	.4	94.07
.2	71.62	.2	76.19	.2	81.39	.2	87.36	.2	94.26
2/13.0	71.72	2/05.0	76.32	1/57.0	81.53	1/49.0	87.52	1/41.0	94.45
.8	71.83	.8	76.44	.8	81.67	.8	87.68	.8	94.63
.6	71.94	.6	76.56	.6	81.81	.6	87.84	.6	94.82
.4	72.05	.4	76.68	.4	81.95	.4	88.00	.4	95.01
.2	72.16	.2	76.81	.2	82.09	.2	88.17	.2	95.20
2/12.0	72.27	2/04.0	76.93	1/56.0	82.24	1/48.0	88.33	1/40.0	95.40
.8	72.38	.8	77.05	.8	82.38	.8	88.49	.8	95.60
.6	72.49	.6	77.18	.6	82.52	.6	88.66	.6	95.79
.4	72.60	.4	77.30	.4	82.66	.4	88.82	.4	95.98
.2	72.71	.2	77.43	.2	82.81	.2	88.99	.2	96.17
2/11.0	72.82	2/03.0	77.56	1/55.0	82.95	1/47.0	89.15	1/39.0	96.36
.8	72.93	.8	77.68	.8	83.10	.8	89.32	.8	96.55
.6	73.04	.6	77.81	.6	83.24	.6	89.49	.6	96.75
.4	73.15	.4	77.94	.4	83.39	.4	89.66	.4	96.95
.2	73.27	.2	78.06	.2	83.53	.2	89.83	.2	97.14
2/10.0	73.38	2/02.0	78.19	1/54.0	83.68	1/46.0	90.00	1/38.0	97.34
.8	73.49	.8	78.32	.8	83.83	.8	90.17	.8	97.54
.6	73.61	.6	78.45	.6	83.97	.6	90.34	.6	97.74
.4	73.72	.4	78.58	.4	84.12	.4	90.51	.4	97.94
.2	73.83	.2	78.71	.2	84.27	.2	90.68	.2	98.14
2/09.0	73.95	2/01.0	78.84	1/53.0	84.42	1/45.0	90.85	1/37.0	98.35

$$\text{SPEED (in m.p.h.)} = \frac{2.65 \times 3600 \times \text{No. of laps}}{\text{TIME (in seconds)}}$$



**GO AHEAD
WITH
SUPER
NATIONAL**

