

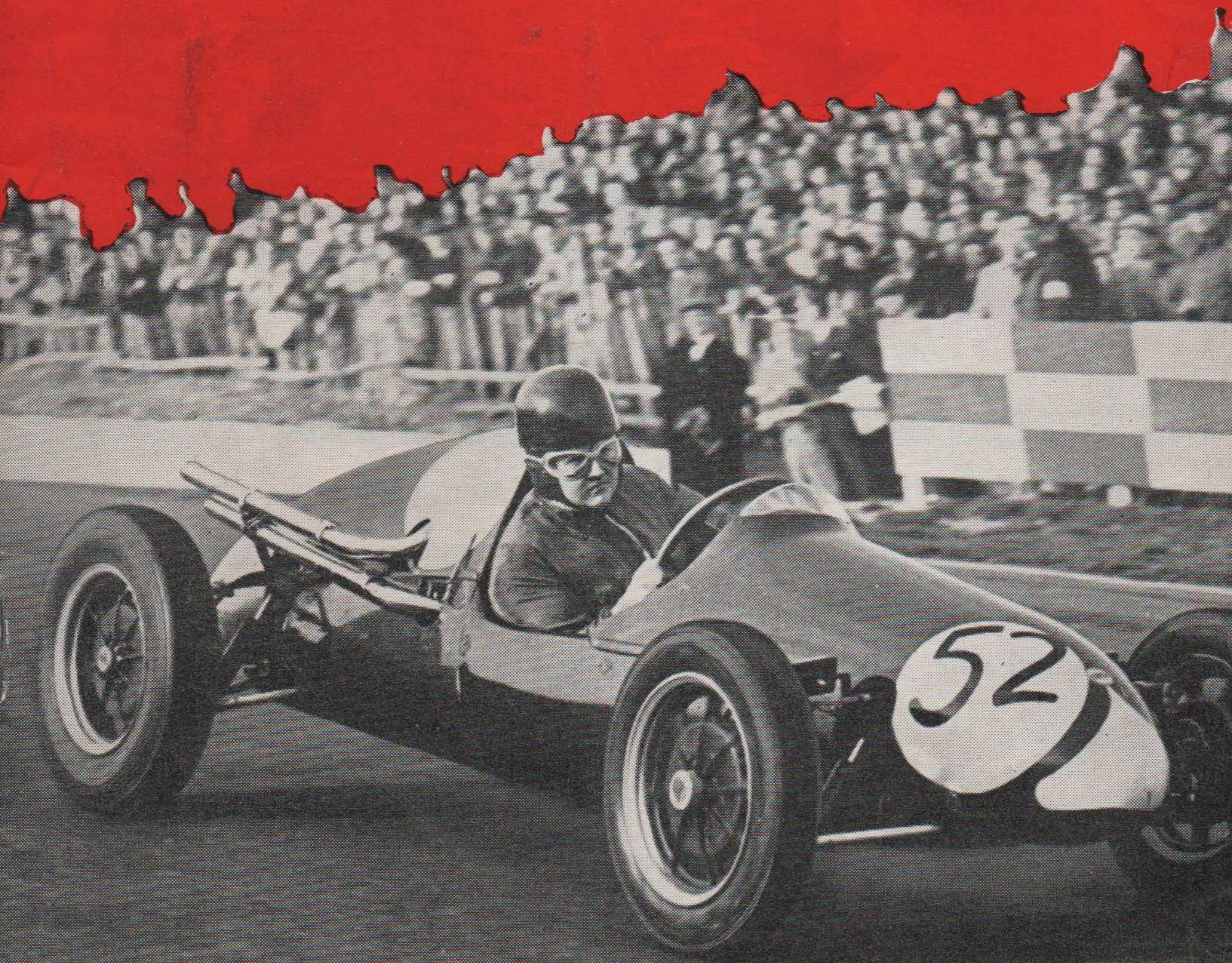
Daily Telegraph

INTERNATIONAL MEETING

BRANDS HATCH

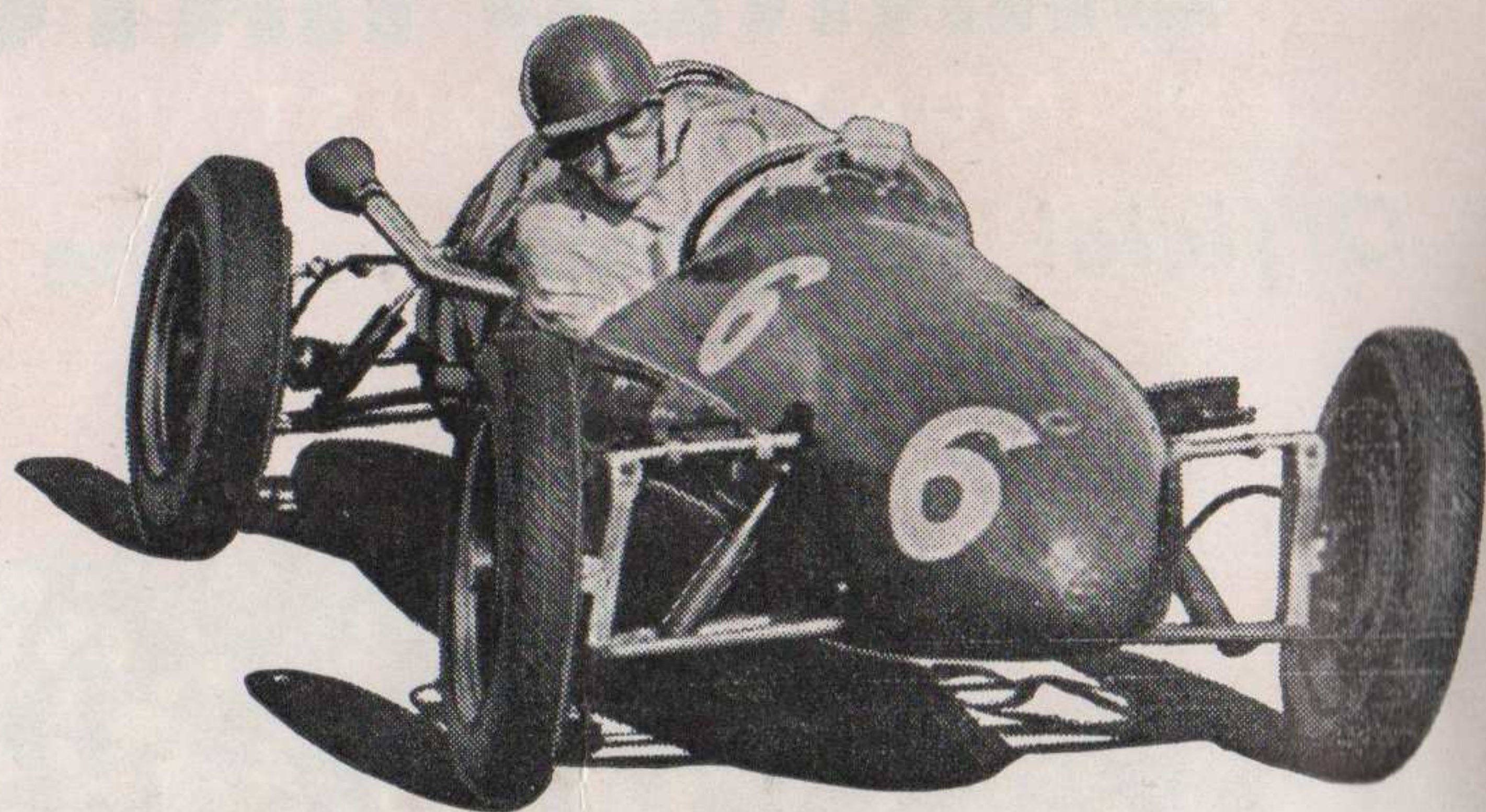
MONDAY, AUGUST 1, 1955

Official Programme... One shilling



The
Autocar

BEST FROM START TO FINISH... Fridays 1/-



Right there!

Relive the season's thrills every Friday with The AUTOCAR. Be "right there" with its brilliant accounts of leading sporting events throughout the world. Enjoy its expert touring and caravanning articles, browse over its impartial and exhaustive Road Tests, its authoritative technical data. Be there always, with The AUTOCAR, every Friday, is.



The Autocar

best from start to finish

The Daily Telegraph INTERNATIONAL CAR RACE MEETING

For Racing Cars & Sports Cars

MONDAY, 1st AUGUST, 1955

BRANDS HATCH CIRCUIT

Held under the International Sporting Code, the General Competition Rules of the Royal Automobile Club, the Competition Rules (1955) of the British Racing and Sports Car Club Ltd., and Supplementary Regulations.

Royal Automobile Club Permit No. D.1496

- RACE ONE** **The 6th Daily Telegraph International Challenge Trophy Race.**
(3 10 lap heats and 3 finals of 10, 12 and 30 laps.)
Formula III Racing Cars.)
- RACE TWO** **The Air Kruise Trophy Race.**
(Two 12 lap heats and one 16 lap final. 1500 c.c. Sports Cars.)
- RACE THREE** **The Rochester Cup Race.**
(Two 15 lap finals. Racing Cars.)
- RACE FOUR** **The Kingsland Trophy Race.**
(One 15 lap final. Exceeding 1900 c.c. Sports Cars.)
- RACE FIVE** **The J.A.P. Race.**
(One 10 lap final. Formula III Racing Cars.)
- RACE SIX** **The Edwardian Trophy Race.**
(One 5 lap final. Edwardian Cars.)

OFFICIALS

STEWARDS OF THE MEETING:

For the R.A.C.:
D. J. Scannell.

For the British Racing & Sports Car Club:

A. W. Richards, J. A. Ellison,
F. H. Bacon.

CLERK OF THE COURSE:

R. M. Carter.

SECRETARY OF THE MEETING:

K. A. Gregory.

ASST. CLERK OF THE COURSE:

R. C. A. Smith.

TIMEKEEPERS:

Major-General A. H. Loughborough
C. Audrey, R. L. Clarke, F. A. Lowe.

TIMEKEEPERS' ASST.:

Miss G. Smith, Miss S. Lundstrom

JUDGES:

G. Symonds, I. H. Smith
A. J. Beagle,

SCRUTINEERS:

S. R. Proctor.
L. A. Cushman, C. A. A. D. Mitchell.

SCRUTINEERS' ASSISTANTS:

A. C. H. Smith, G. H. Meekings.

RACE CONTROL:

P. G. Tompson, E. V. Harcourt,
N. May, Mrs. S. Cooper,
M. J. Tompson.

COMMENTATOR:

J. V. Bolster.

CHIEF MARSHAL:

R. S. Ridgeway.

ASST. CHIEF MARSHAL:

S. G. Ridgeway.

CHIEF OBSERVER:

J. H. Kemsley.

CHIEF FLAG MARSHAL:

N. P. Higgins.

CHIEF COURSE MARSHAL:

G. Ridgewell.

CHIEF PADDOCK MARSHAL:

H. Lamkin.

STARTERS:

C. Greville-Smith, F. Gander.

PRESS OFFICERS:

John Webb Press Services Ltd.

MEDICAL OFFICER:

Dr. C. Outred.

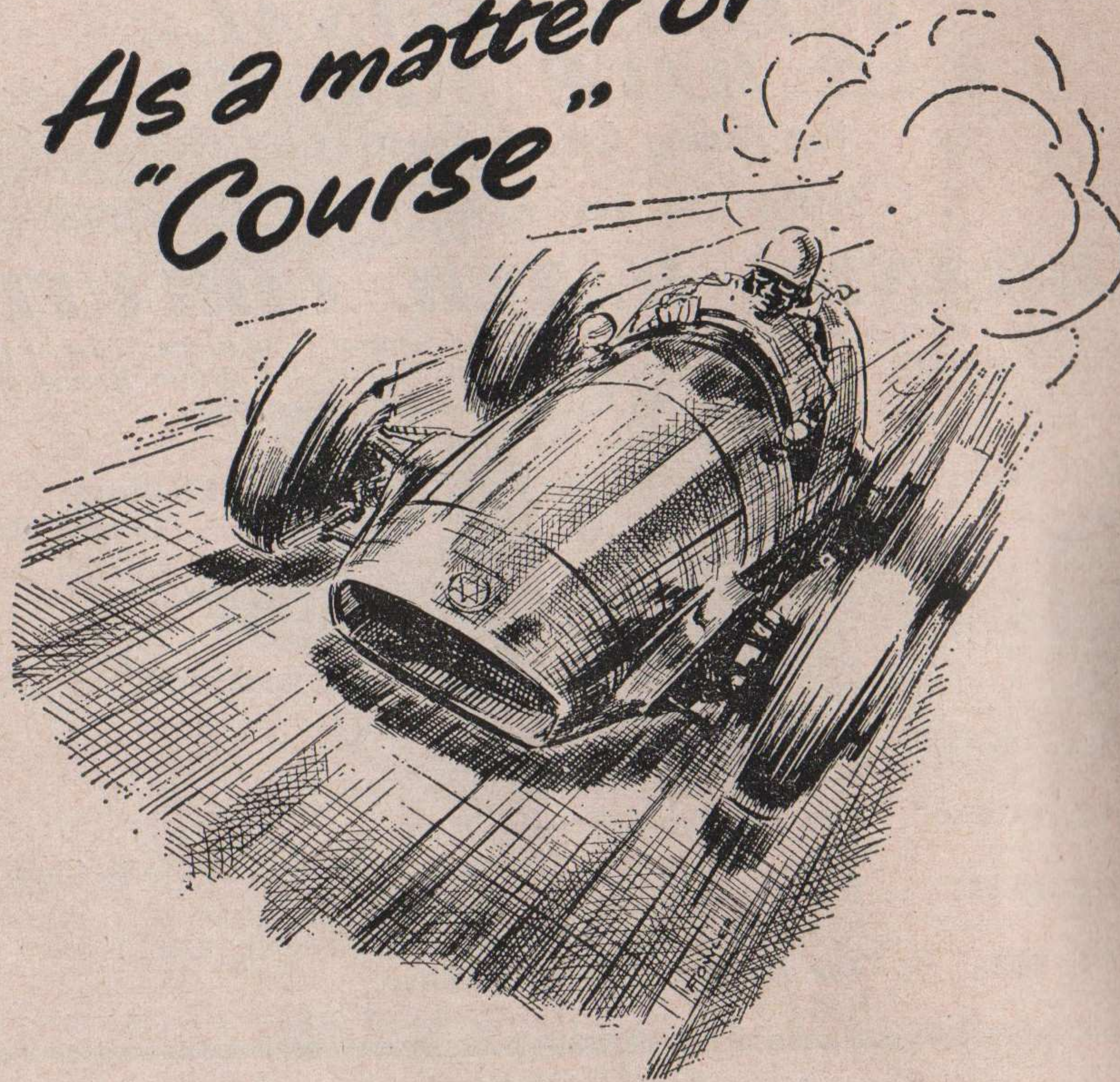
MARSHALS:

Members of the British Racing & Sports Car Club.

MEDICAL SERVICES:

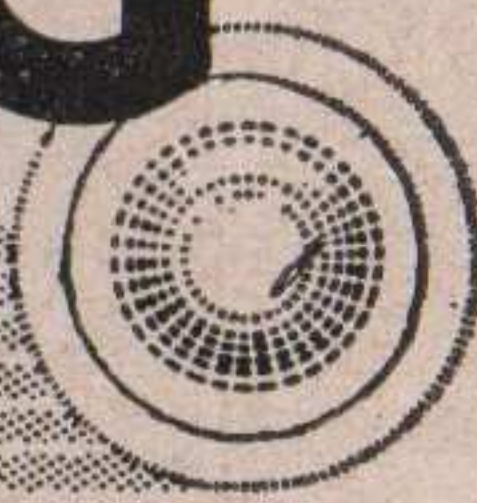
St. John Ambulance Brigade.

*As a matter of
"Course"*



GIRLING

THE BEST BRAKES IN THE WORLD



BRAKES · DAMPERS
CHASSIS ENGINEERING

Way Out Ahead →

GIRLING LIMITED
KINGS ROAD · TYSELEY
BIRMINGHAM 11

RACING TODAY

LOOK through the entry list and you will find in each category the ingredients for close racing in this Daily Telegraph International meeting. Amongst the big racing cars there is a contingent of Cooper-Bristols, two of which are driven by Rob Gerard and Mike Keen, and several Connaughts to challenge them. Leslie Marr will drive the latest streamlined model with fuel injection which competed in its first long distance race at the recent British Grand Prix. In this race Dick Cobden from Australia will drive his 1948 Ferrari, a supercharged Grand Prix car of that period, this will be the first time a Ferrari has been seen at this circuit. With Formula I Maseratis, also for the first time at Brands Hatch, will be Roy Salvadori and Horace Gould. On this short circuit it will be interesting to see whether the extra power for these 2½-litre GP cars will be all that more use against the 2-litre Connaughts driven by Young and Riseley-Pritchard, Gibson and Holt, they are good performers on this circuit. The Cooper driven by Jack Brabham made its entry into racing in the British Grand Prix and it is a development of the 1100 c.c. Cooper which has done so well in sports car racing in British events this year, the cut off tail follows a well-known streamlining theory.

In the sports car classes we are glad to see an entry from Switzerland, Gerard Crombac in his Ford-Consul-engined Lotus and M. Collangi in an OSCA, they will have to work very hard to beat the strong 1100 c.c. Coventry-Climax cars, Cooper, Halseylec, Lotus, Buckler, Beart Rodger and the Elva which is out for the first time with a Coventry-Climax engine. Keep an eye on these 1100 c.c. cars in the 1½-litre race.

There are also strong entries with MG-engined Lotus and Lister cars. Russell and Bueb will defend the reputation of the Cooper-Climax which ran away with the 1500 c.c. class at the last meeting and Colin Chapman and Peter Jopp will be driving the works Lotus cars. First time out will be Lionel Leonard's own car driven by Alan Brown who is an old hand at this circuit. In the 500s we have overseas representation from South Africa, Finland, Germany and Holland. Our old friends Hutchinson and Beels know Brands Hatch well, although they are only occasional visitors.

The 500 entry is large and when it has all been sorted out in the heats the three finals should give us some close finishes.

LAP RECORDS

Formula Libre

D. BEAUMAN Connaught 60.8 secs. (73.42 m.p.h.)

Formula III

S. LEWIS-EVANS Cooper 61 secs. (73.18 m.p.h.)

1100 c.c. Sports Cars

J RUSSELL Cooper-Climax 63.6 secs. (70.19 m.p.h.)

1500 c.c. Sports Cars

A. BROWN Connaught 62.4 secs. (71.54 m.p.h.)



**THIS
NEW OIL SAVES
PETROL!**

Costs more—but worth it. You pay more for this new oil—but look what you get in return. More miles per gallon—up to 15% more. Easier starting, and therefore longer battery life. Better performance, and *much less engine wear.*

Shell X-100 10W/30 is a multigrade oil—as thin as a winter grade oil at freezing point yet thick as heavy summer oil even at racing heat. Hot or cold, your engine enjoys perfect lubrication—and runs better for it. You'll soon notice the difference when you make the change.

IMPORTANT: Shell X-100 10W/30 gives best results in four-stroke petrol engines in good mechanical condition. Like all the Shell X-100 range of oils it is detergent, and if you are not already using a detergent oil the

sump should be drained and refilled 500 miles after the change. Oil consumption will be about the same as that on S.A.E. 20 grade. If you are using S.A.E. 30 you may notice some increase in consumption, but this will be amply repaid by saving in fuel, reduced wear, and a useful increase in battery life.

**Advantages of
Shell X-100 10W/30**

- Is ideal for 'stop-start' motoring ✓
- Lubricates instantly, hot or cold ✓
- Protects completely, hot or cold ✓
- Gives up to 15% more m.p.g. ✓
- Reduces carbon deposits—engines keep full power longer ✓
- Eliminates need for seasonal oil changes ✓



10W/30 the multigrade oil

Shell X-100 Motor Oil is available in all the following grades: S.A.E. 20/20W, 30, 40, 50 and now 10W/30 (multigrade). Shell X-100 10W/30 is available only in sealed containers.

CARS ELIGIBLE

1. Single seater racing cars complying with the International Formula III which specifies:—

- (a) Engine capacity not exceeding 500 c.c. unsupercharged.
- (b) Minimum weight 440 lb. dry; i.e., without fuel, oil or water.
- (c) Two independent braking systems operating on four wheels.
- (d) Exhaust directed in such a way as not to hinder other drivers.
- (e) Fuel shall be free, excluding the use or addition of nitro methane, nitro propane, hydrogen peroxide, di-tertiary butyl peroxide, ethyl nitrate, isopropyl nitrate, amyl nitrate, iso butyl acetate, oxygen, liquid or compressed, nitrous oxide.

The use of nitro benzine in quantities exceeding 30 c.c. per litre is also forbidden.

- 2. Single seater racing cars with an engine capacity in excess of 501 c.c. supercharged or unsupercharged
- 3. Sports cars with an engine capacity not exceeding 1500 c.c. unsupercharged or 1100 c.c. supercharged.
- 4. Sports cars with an engine capacity exceeding 1900 c.c. unsupercharged.
- 5. Veteran Vintage and Edwardian cars by invitation from the British Racing & Sports Car Club Ltd.

Where races are run in heats and finals, the same car and engine must be used in the heat and final; i.e., it is not permissible to change cars or engines between heats and finals.

The length of the circuit is 1.24 miles. Races will be run in a clockwise direction, competitors normally overtaking on the left.

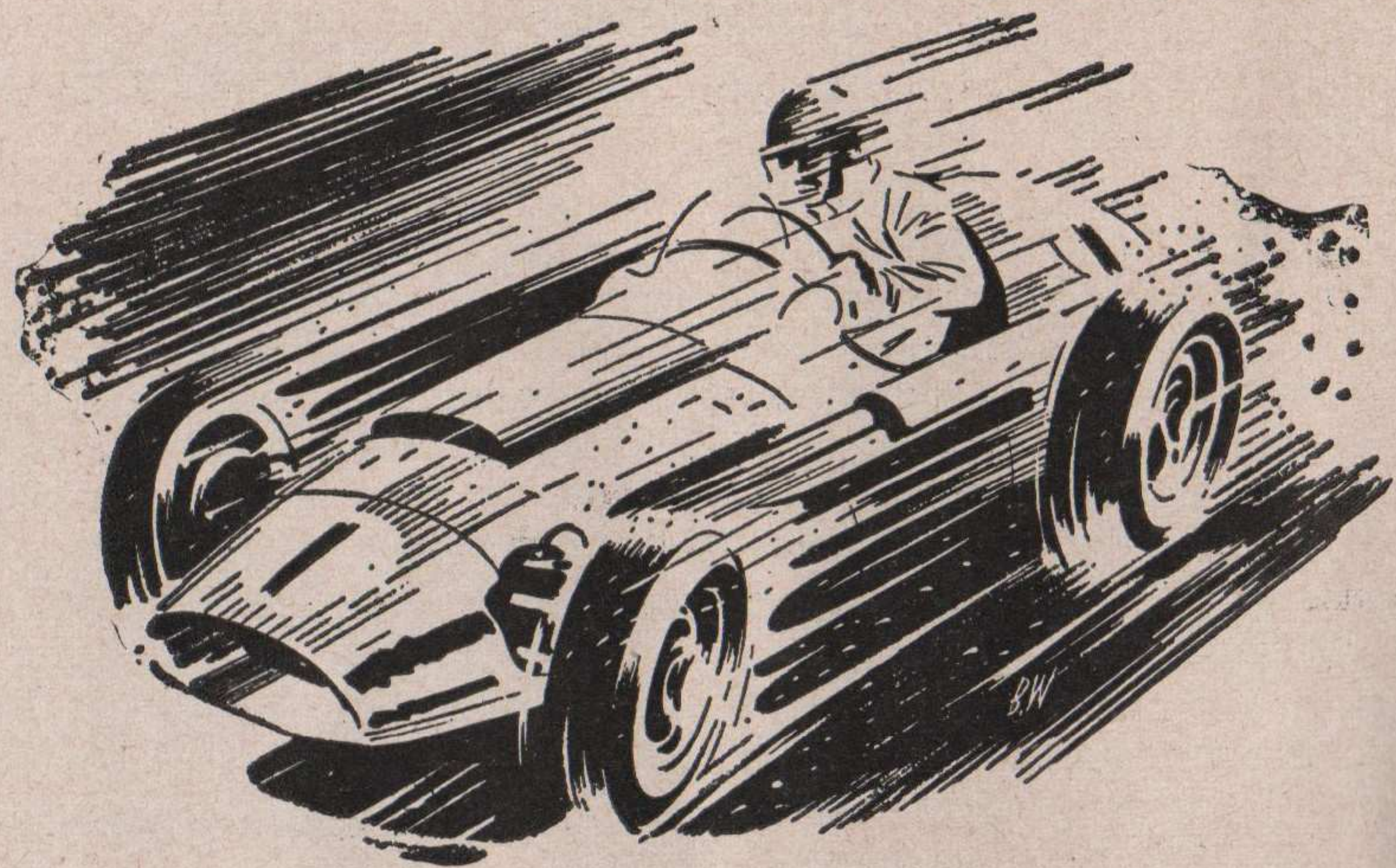
General. All cars competing in classes 3 and 4 will be required to comply with Appendix C of the International Sporting Code except that the rules relating to wings and doors will not be enforced. Competitors driving sports cars in these classes will be required to use standard pump fuel of brands available to the public. Where windscreens are carried they must be of laminated glass or perspex. Retreaded tyres will be allowed subject to R.A.C. requirements. In addition, all cars competing under the above Regulations will be required to comply with G.C.R. 134 which states that in all automobiles which take part in competitions there must be some form of protection between the engine and driver's compartment suitable and sufficient in the case of fire, for preventing the passage of flames.

STARTING POSITIONS

Starting positions in the heats of Race 1 and 2, and events 3, 4, and 5, will be determined by lap speeds put up in official practice. Starting positions in the finals of Races 1 and 2 will be according to race times in the heats.

ACKNOWLEDGMENTS

- Air Kruiise (Kent) Ltd., Ferryfield Airport, Lydd, Kent, for the Air Kruiise Trophy and lap prizes.
- Paddock & Start Warning Signals*—Joseph Lucas Ltd.
- Breakdown & Fire Tender*—Messrs. Crips Bros., Sidcup; L. F. Ward, Ltd, Thornton Heath; Messrs. Prynne & Stevens, Brixton.
- Austin Healey Car*—The Donald Healey Motor Co., The Cape, Warwick.
- J.A.P. Presentation Tankard*—Messrs. Dandridges of Greenwich.



**Car Racing leads
to better tyres
for everyone—that
is why most
motorists
choose**



LIST OF DRIVERS AND ENTRANTS

FORMULA III RACING CARS

No.	Entrant	Driver	Car	Engine
1	F. Hobart	F. Hobart	Martin	Norton
2	G. M. Jones	G. M. Jones	Kieft	Norton
3	D. Truman	D. Truman	Cooper	Norton
4	R. F. Mayne	R. F. Mayne	Cooper	J.A.P.
5	D. Taylor	D. Taylor	Cooper	Norton
6	R. K. Tyrrell	R. K. Tyrrell	Cooper	Norton
7	L. Lewis-Evans	L. Lewis-Evans	Cooper	Norton
8	G. F. Meharey	G. F. Meharey	Cooper	J.A.P.
9	C. C. H. Davis	C. C. H. Davis	Cooper	Norton
10	C. Allison	C. Allison	Cooper	Norton
11	F. Beart	L. Leston	Cooper	Norton
12	D. Parker	D. Parker	Kieft	Norton
13	D. F. Iszatt	D. F. Iszatt	Cooper	Norton/J.A.P.
14	D. A. Haigh	D. A. Haigh	Cooper	J.A.P.
15	R. H. Ham	R. H. Ham	Arnott	Norton
16	E. Hall	E. Hall	Cooper	Norton
17	Barrett & Son	R. Barrett	Cooper	Norton
18	T. Bridger	T. Bridger	Kieft	Norton
19	R. H. R. Hett	R. H. R. Hett	Emeryson	Norton
20	D. F. Latchford	D. F. Latchford	Iota	J.A.P.
21	A. J. C. Newton	A. J. C. Newton	Cooper	Norton
22	M. G. Thomas	M. G. Thomas	Mackson	J.A.P.
23	Equipe Nondescript	T. H. Shaddick	I.E.R.	J.A.P.
24	B. A. Manning	B. A. Manning	Staride	J.A.P.
25	R. T. Learnan	R. T. Learnan	R.G.R.	J.A.P.
26	W. A. Jones	W. A. Jones	C.R.M.	J.A.P.
27	Peter Brown Autos	J. Brown	Martin Spl	Norton
28	D. S. Stevenson	D. S. Stevenson	Cooper	Vincent
29	H. E. Douglas	H. E. Douglas	Cooper	J.A.P.
30	D. H. Phillips	D. H. Phillips	Cooper	J.A.P.
31	R. G. Bicknell	R. G. Bicknell	Revis	Norton
32	H. C. Taylor	H. C. Taylor	Cooper	J.A.P.
33	G. M. Jones	G. M. Jones	Kieft	J.A.P.
34	Ecurie Heyward	C. W. A. Heyward	C.H.S.	Norton
35	Ecurie Heyward	B. A. Heyward	Comet	J.A.P.
36	C. Scott-MacArthur	C. Scott-MacArthur	Mackson	J.A.P.
37	Acres Autos Ltd	H. R. Povah	Cooper	Norton
38	Premier M.R.C.	P. J. Bourke/ A. F. Jacks	Cooper	J.A.P.
39	M. C. Brackenbury	M. C. Brackenbury	Cooper	J.A.P.
40	S. Foreman	S. Foreman	Cooper	J.A.P.
41	A. W. Harrison & Sons Ltd	R. E. D. Harrison	Cooper	Norton
42	T. J. H. Bennett	T. J. H. Bennett	Arnott	J.A.P.
43	R. R. Jackson	S. Lewis-Evans	Cooper	Norton
44	P. A. Luke	P. A. Luke	Cooper	Norton
45	P. R. Green	P. R. Green	Staride	J.A.P.
46	R. A. Anderson	R. A. Anderson	Staride	Norton
47	S. V. Chalmers	S. V. Chalmers	J.B.S.	J.A.P.
48	D. O. Johnson	D. O. Johnson	Cooper	Norton
49	H. S. Howlett	H. S. Howlett	Cooper	J.A.P.
50	Car Exchange (Brighton) Ltd	I. E. Raby	Cooper	Norton
51	Greene & Mays Ltd	F. J. Mays	G.M.	J.A.P.
52	A. Eccles	A. Eccles	Staride	Norton
54	Premier M.R.C.	R. Bayton	Kieft	J.A.P.
55	N. T. Bradley	N. T. Bradley	Staride	Norton
56	A. V. Cowley	A. V. Cowley	Cooper	Norton

LIST OF DRIVERS AND ENTRANTS (Cont.)

No.	Entrant	Driver	Car	Engine
57	G. W. Forster ..	G. W. Forster	Cooper	Norton
58	H. Phillipson ..	H. Phillipson	Staride	Norton
59	A. Zains	A. Zains	Cooper	Norton
60	Cooper Car Co Ltd	J. Russell	Cooper	Norton
61	Cooper Car Co Ltd	I. Bueb	Cooper	Norton
62	A. J. Fergusson (S. Africa)	A. J. Fergusson ..	Cooper	Norton
63	Curt Lincoln (Finland)	Curt Lincoln	Cooper	Norton
64	W. Hampel (Germany)	W. Hampel	Cooper	Norton
65	Beels Racing Team (Holland)	H. Hutchinson ..	Cooper	Norton
66	Beels Racing Team (Holland)	L. Beels	Cooper	Norton
<i>Reserves:—</i>				
49	H. S. Howlett ..	H. S. Howlett	Cooper	J.A.P.
53	A. Eccles	R. Cooksey	Cooper	J.A.P.
67	H. D. King	H. D. King	Cooper	Norton
68	I. J. Williams ..	I. J. Williams	Emeryson ..	Norton
69	J. M. Hunt	J. M. Hunt	Cooper	J.A.P.
70	P. A. Taylor	P. A. Taylor	Arnott	Norton
71	K. Kuhnke (Germany)	K. Kuhnke	Cooper	Norton
72	G. A. Henrotte ..	G. A. Henrotte ..	Ettorne	Norton
73	J. F. Westcott ..	J. F. Westcott ..	Cooper	Norton
74	Ray Martin Racing Motors	N. Veronique ..	Martin	Norton
<u>SPORTS CARS UP TO 1500 c.c.</u>				
1	Cooper Car Co Ltd	J. Russell	Cooper	Coventry Climax
2	Cooper Car Co Ltd	I. Bueb	Cooper	Coventry Climax
3	E. Brandon	E. Brandon	Halseylec ..	Coventry Climax
4	P. Emery	P. Emery	Lotus	Coventry Climax
5	M. Collange (France)	M. Collange	Oscia	Oscia
6	A. Moore	J. Coombs	Lotus	Connaught
7	Ecurie Bullfrog (Switzerland)	G. Crombac	Lotus	Ford
8	Mercury Stable ..	Major A. Mallock ..	Veritas	B.M.W.
9	Elva Racing Team	R. Mackenzie-Low ..	Elva	Coventry Climax
10	P. D. Gammon ..	P. D. Gammon	Cooper	Coventry Climax
11	Team Lotus	P. Jopp	Lotus	Coventry Climax
12	Panda Racing Team	R. Watling-Greenwood	Cooper	Coventry Climax
14	W. A. Liddell ..	W. A. Liddell	Buckler	Coventry Climax
15	D. H. Swanton ..	D. H. Swanton	Lotus	Ford
16	J. J. Richards ..	D. Parker/ I. W. Martin	Lotus	L.R.G. Ford
17	Car Mart (Hastings)	D. J. Hayles	Lotus	Coventry Climax
18	F. Beart	S. Lewis-Evans ..	Beart Rodger	Coventry Climax
19	Elva Racing Team	R. L. Manwaring ..	Elva	L.R.G. Ford
20	A. J. Ridy	A. J. Ridy	Lamgia	M.G.
21	C. G. Escott	C. G. Escott	Lester M.G. ..	M.G.
22	A. J. Nurse	A. J. Nurse	Lotus	M.G.
23	P. Riley	P. Riley	Lotus	M.G.
24	Weldangrind Ltd ..	S. G. Young	Par-Son	M.G.
25	J. B. Naylor Ltd ..	B. Naylor	Lotus	Connaught
26	L. Leonard	A. E. Brown	Leonard M.G.	M.G.
27	Ecurie Bullfrog ..	J. Horridge	Lister	Riley
28	Team Lotus	C. Chapman	Lotus	M.G.
29	H. B. Digby	H. B. Digby	Lotus	Ford

LIST OF DRIVERS AND ENTRANTS (Cont.)

No.	Entrant	Driver	Car	Engine
<i>Reserves:</i>				
30	R. D. Jennings ..	R. D. Jennings	Cooper M.G. ..	M.G.
31	L. Gibbs	L. Gibbs	Lotus	Ford
32	R. Blandshard ..	R. Blandshard	Lotus	Ford
33	The Six Mile Stable	D. Kastering	Lotus	Coventry-Climax
34	Equipe Maritime ..	D. C. Godfrey	Buckler	Ford
35	A. Stacey	A. Stacey	Lotus	Coventry-Climax
36	J. Harris	J. Harris	Lotus	Coventry-Climax
37	M. G. H. MacDowel	M. G. H. MacDowel	Lotus	Ford
<u>SPORTS CARS OVER 1900 c.c.</u>				
40	A. G. Whitehead ..	A. G. Whitehead ..	Aston Martin DB3S	Aston Martin
41	P. J. Crabb	P. J. Crabb	Tojeiro	Bristol
42	G. H. & J. L. Rolls	G. Rolls	Tojeiro	Bristol
43	J. Maurice Tew ..	J. Maurice Tew	Fraser-Nash ..	Bristol
44	M. Young	M. Young	Lotus	Connaught
45	W. B. Black	W. B. Black/ J. G. Sears	Lister	Bristol
46	M. Anthony	M. Anthony	Lotus	Bristol
47	D. S. Boston	D. S. Boston/ E. Protheroe	Jaguar XK120C	Jaguar
48	Curt Lincoln (Finland)	Curt Lincoln	Jaguar XK120C	Jaguar
49	Mrs. R. Vickers ..	J. Barber	Jaguar XK120C	Jaguar
50	G. Hovel	G. Hovel	Maserati	Maserati
51	G. H. Lister & Sons	A. Scott-Brown ..	Lister	Bristol
52	A. E. Brown	A. E. Brown	Cooper	Aston Martin
53	F. C. Davis	F. C. Davis	Lotus	Bristol
<i>Reserves:</i>				
54	The Six Mile Stable	N. Cunningham Reid	Lister	Bristol
55	Equipe Devone ..	T. Kyffin	Cooper	Bristol
56	Equipe Devone ..	B. Halford	H.W.M.	Alta
<u>RACING CARS UNLIMITED</u>				
2	R. J. Chase	M. J. C. Keen	Cooper	Bristol
4	"Kangaroo Stable"	R. Cobden	Ferrari	Ferrari
6	M. Young	M. Young	Connaught ..	H.W.M. Alta
8	E. W. Holt	E. W. Holt	Connaught ..	Connaught
10	R. Gibson	R. Gibson	Connaught ..	Connaught
12	A. W. Birrell ..	A. W. Birrell	Cooper	Bristol
14	F. R. Gerard	F. R. Gerard	Cooper	Bristol
16	Cooper Car Co Ltd	J. Brabham	Cooper	Bristol
18	Equipe Devone ..	T. Kyffin	Cooper	Bristol
20	Gilby Engineering	R. F. Salvadori ..	Maserati	Maserati
22	J. Young	J. Young	Connaught ..	Connaught
24	J. Riseley-Pritchard	A. E. Brown	Connaught ..	Connaught
26	L. Marr	L. Marr	Connaught ..	Connaught
28	Emeryson Cars ..	P. R. Emery	Emeryson ..	Alta
<i>Reserves:</i>				
30	Equipe Devone ..	B. Halford	Cooper	Bristol
32	Border Reivers ..	J. Somervail	Cooper	Bristol
34	A. E. Marsh	A. E. Marsh	Cooper	J.A.P.
36	C. C. H. Davis ..	C. C. H. Davis	Cooper	J.A.P.

PRIZES

RACE 1. Heats	1st £10	2nd £5	3rd £3		
Daily Telegraph Trophy Final	1st £250	2nd £100	3rd £50	4th £35	5th £25
	6th £15	7th £10	8th £5		
Second Final	1st £20	2nd £15	3rd £10	4th £5	5th £3
Consolation Final	1st £12	2nd £8	3rd £5	4th £3	

In addition, the sum of £1 per lap will be paid in Final 1 only to the competitor holding the lead over the start and finish line at the termination of each lap.

RACE 2. Heats	1st £10	2nd £5	3rd £3		
Final	1st £100	2nd £70	3rd £40	4th £30	5th £20
	6th £10				

In addition to the highest placed 1100 c.c. car, £30
 In addition to the 2nd highest placed 1100 c.c. £20
 In addition to the 3rd highest placed 1100 c.c. £10
 These additional prizes cannot be paid to any competitor who, in the race, takes 1st or 2nd position in the general classification.

RACE 3	1st £100	2nd £60	3rd £40	4th £30	5th £20
	6th £10				

RACE 4.	1st £100	2nd £60	3rd £40	4th £30	5th £20
	6th £10				

RACE 5.	1st £20	2nd £15	3rd £10	4th £8	5th £5
---------	---------	---------	---------	--------	--------

RACE 6. A prize will be awarded to each competitor

TROPHIES:—

RACE 1. The Daily Telegraph International Challenge Trophy and Replica

RACE 2. The Air Kruise Trophy and Replica

RACE 3. The Rochester Cup and Replica

RACE 4. The Kingsland Trophy and Replica

RACE 5. Presentation Tankard.

PROGRAMME TIMING

Events	Laps	Start	Finish	Interval
Heat 1, F III	10	11.00	11.13	12 mins.
Heat 1, 1500 c.c. sports	12	11.25	11.40	10 "
Heat 2, F III	10	11.50	12.03	12 "
Heat 2, 1500 c.c. sports	12	12.15	12.30	10 "
Heat 3, F III	10	12.40	12.53	15 "
Part I, F. Libre	15	13.08	13.28	12 "
Edwardian Race	5	13.40	13.50	22 "
2-litre sports	15	14.12	14.32	15 "
Part 2, F. Libre	15	14.47	15.07	15 "
Second Final, F III	12	15.22	15.37	15 "
Final, 1500 c.c. sports	16	15.52	16.13	14 "
J.A.P. Race	10	16.27	16.40	14 "
Consolation Race, F III	10	16.54	17.07	15 "
Final, Daily Tel. Int. Challenge Trophy Race	30	17.22	17.55	



THE "DAILY TELEGRAPH" CHALLENGE TROPHY

THE DAILY TELEGRAPH INTERNATIONAL TROPHY

THE first race for The Daily Telegraph Trophy was held at Brands Hatch on August 7th, 1950. After an exciting duel with Bill Whitehouse and Stirling Moss, George Wicken won the 35-mile final at 63.56 m.p.h.

In 1951 Bill Whitehouse won in a continuous downpour of rain. Visibility was poor and parts of the track were under water, but nevertheless the winner averaged 52.63 m.p.h. over the 40 miles.

The 1952 race, over 30 miles, was led by Stirling Moss in the early stages. Don Parker worked his way cleverly through the field and took the lead as a rod came through the side of Stirling's engine, but not before the latter had raised the lap record to 71.43 m.p.h. Don Parker won at an average speed of 67.92 m.p.h. In 1953 Don Parker went ahead at the fall of the flag and was never challenged. Les Leston finished second after a fierce battle with Stuart Lewis-Evans who finished third. Who will be today's winner?

Last year, Jim Russell driving a Steve Lancefield prepared works entered Cooper Norton finished ahead of Stirling Moss driving Francis Beart's Cooper. Denis Taylor drove a Staride into third position.



CONGRATULATES

IVOR BUEB

on **4** fine firsts

Crystal Palace Race Meeting - Whit Monday

1st

Redex Challenge Trophy 500 c.c.
Cooper

Using Essolube Motor Oil

1st

Anerley Trophy

Cooper-Climax 72.28 m.p.h.

Using Esso Extra and Essolube Motor Oil

1st

International Trophy Meeting Silverstone - May 7

1500 c.c. class

Cooper-Climax 83.43 m.p.h.

Using Esso Extra and Essolube Motor Oil

1st

Goodwood Easter Meeting - April 11

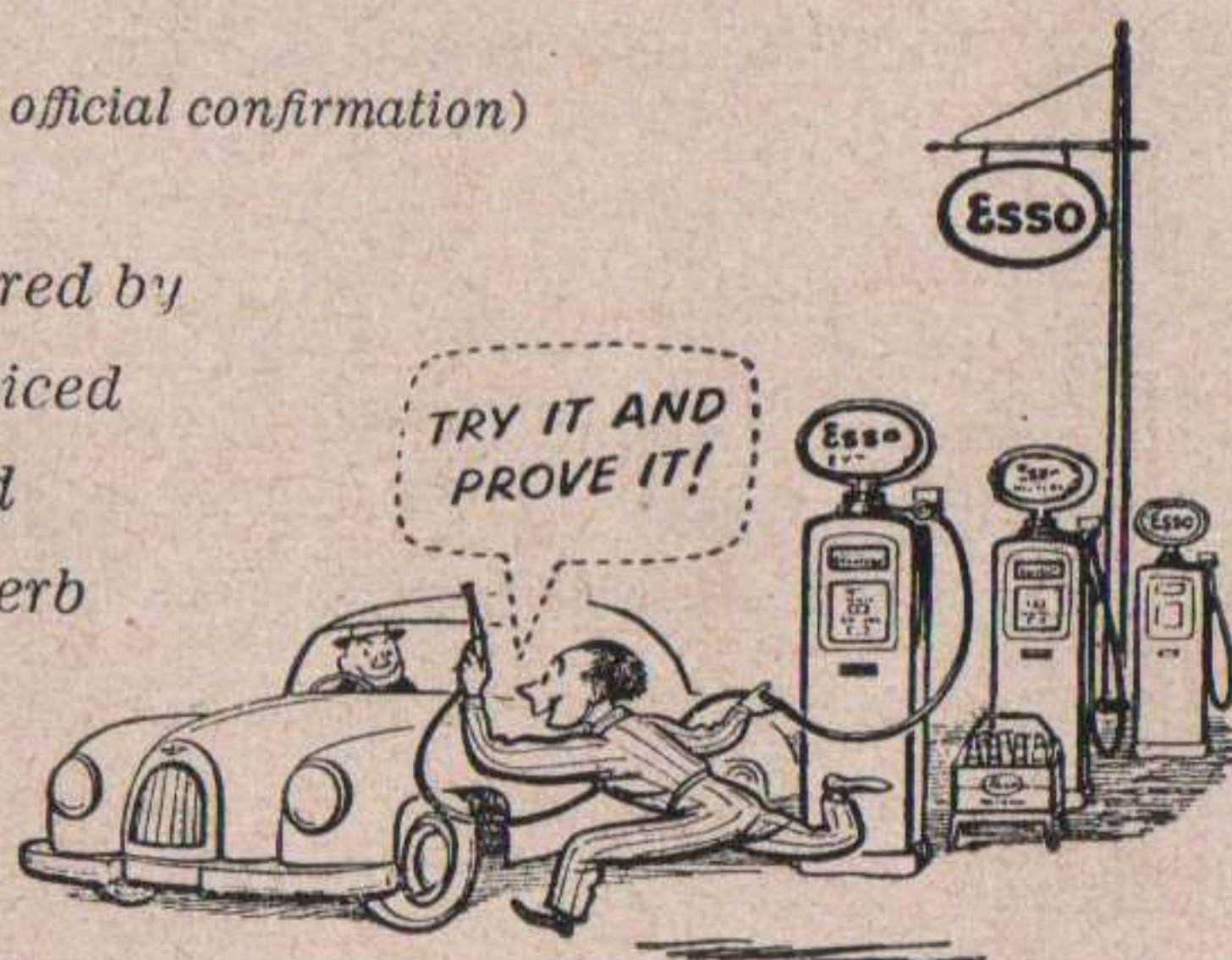
Sports car race A (1100 c.c. class)

Cooper 88.00 m.p.h.

Using Esso Extra and Essolube Motor Oil

(Subject to official confirmation)

* All the cars in the above races were entered by the Cooper Car Company Ltd. and were serviced with Esso products including Esso Extra and Essolube Motor Oil . . . exactly the same superb Esso products you can buy from your local Esso Dealer.



Event No. 1.

RACE ONE

The 6th Daily Telegraph International Challenge Trophy Race

This race is open to any driver competing with a single seater racing car of up to 500 c.c. engine capacity unsupercharged.

An unspecified number from each heat will go forward to the Daily Telegraph Trophy Final, the Second Final and the Consolation Final.

Start: 11.00 a.m.

Heat 1

10 Laps

No.	Entrant	Driver	Car	Engine
1	F. Hobart	F. Hobart	Martin	Norton
4	R. F. Mayne	R. F. Mayne	Cooper	J.A.P.
7	L. Lewis-Evans	L. Lewis-Evans	Cooper	Norton
10	C. Allison	C. Allison	Cooper	Norton
13	D. F. Iszatt	D. F. Iszatt	Cooper	Norton/J.A.P.
16	E. Hall	E. Hall	Cooper	Norton
19	R. H. R. Hett	R. H. R. Hett	Emeryson	Norton
22	M. G. Thomas	M. G. Thomas	Mackson	J.A.P.
25	R. T. Learnan	R. T. Learnan	R.G.R.	J.A.P.
28	D. S. Stevenson	D. S. Stevenson	Cooper	Vincent
31	R. G. Bicknell	R. G. Bicknell	Revis	Norton
35	Ecurie Heyward	B. A. Heyward	Comet	J.A.P.
39	M. C. Brackenbury	M. C. Brackenbury	Cooper	J.A.P.
42	T. J. H. Bennett	T. J. H. Bennett	Arnott	J.A.P.
45	P. R. Green	P. R. Green	Staride	J.A.P.
48	D. O. Johnson	D. O. Johnson	Cooper	Norton
55	N. T. Bradley	N. T. Bradley	Staride	Norton
58	H. Phillipson	H. Phillipson	Staride	Norton
61	Cooper Car Co Ltd	I. Bueb	Cooper	Norton
64	W. Hampel	(Germany) W. Hampel	Cooper	Norton
71	K. Kuhnke	(Germany) K. Kuhnke	Cooper	Norton

Results:

1st..... 2nd..... 3rd.....
4th..... 5th..... 6th.....

Winner's Time..... Speedm.p.h.

CONDITIONS OF ADMISSION.

Spectators attending the track do so entirely at their own risk. It is a condition of admission that the Brands Hatch Circuit Limited and all persons having any connection with the promotion and/or organisation and/or conduct of the meeting (including the drivers and owners of vehicles and passengers in vehicles) are absolved from all responsibility and liability whatsoever from negligence, or by accidents causing loss, damage or personal injury to spectators or ticket holders, or to their goods or vehicles.

POSTPONEMENT OF THE MEETING

The Club reserves the right to postpone or cancel the meeting.

RACE TWO

The Air Kruise Trophy Race

For The B.R.S.C.C. National 1500 c.c. Sports Car Championship

This race is open to any driver competing with a sports car with an engine capacity not exceeding 1500 c.c. unsupercharged.

Start: 11.25 a.m. Heat 1 12 Laps

No.	Entrant	Driver	Car	Engine
1	Cooper Car Co Ltd	J. Russell	Cooper	Coventry Climax
3	E. Brandon	E. Brandon	Halseylec	Coventry Climax
5	M. Collange (France)	M. Collange	Osca	Osca
7	Ecurie Bullfrog (Suisse)	G. Crombac	Lotus	Ford
9	Elva Racing Team	R. Mackenzie-Low	Elva	Coventry Climax
11	Team Lotus	P. Jopp	Lotus	Coventry-Climax
14	W. A. Liddell	W. A. Liddell	Buckler	Coventry-Climax
16	J. J. Richards	D. Parker/ I. W. Martin	Lotus	L.R.G. Ford
18	F. Beart	S. Lewis-Evans	Beart Rodger	Coventry-Climax
20	A. J. Ridy	A. J. Ridy	Lamgia	M.G.
22	A. J. Nurse	A. J. Nurse	Lotus	M.G.
24	Weldangrind Ltd	S. G. Young	Par-Son	M.G.
26	L. Leonard	A. E. Brown	Leonard	M.G.
28	Team Lotus	C. Chapman	Lotus	M.G.

Results:

1st.....	2nd.....	3rd.....
4th.....	5th.....	6th.....
Winner's Time.....		Speed.....m.p.h.

FLAG SIGNALS

Competitors are reminded of the meaning of the Flags which will be used by the Flag Marshals.

UNION JACK—Start.

RED—Stop immediately.

YELLOW (Waved)—Great danger, prepare to stop.

YELLOW (Motionless)—Take care, danger.

BLUE (Waved)—Another competitor is trying to overtake.

BLUE (Motionless)—Another competitor is following you closely.

YELLOW WITH VERTICAL RED STRIPES—Oil on the Course.

WHITE—An ambulance or service car on the circuit.

BLACK (With number)—Car with that number must stop.

BLACK AND WHITE CHEQUERED—Signal for end of Race.

SPECIAL NOTICE:— A car that does not stop when the Red or Black Flag is shown will render the driver of that car liable to a fine of £5.

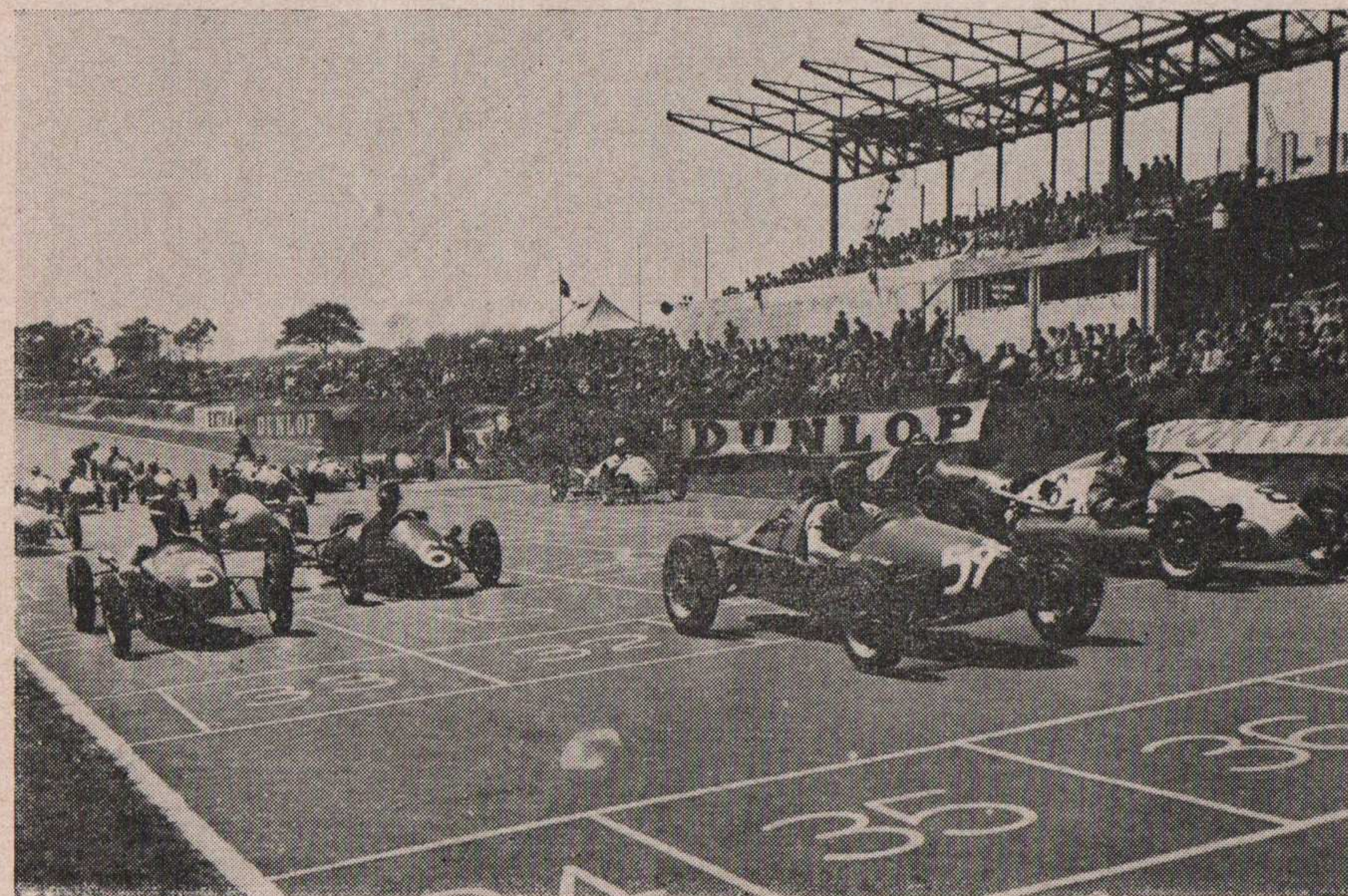
RACE ONE

Start: 11.50 a.m. Heat 2 10 Laps

No.	Entrant	Driver	Car	Engine
2	G. M. Jones	G. M. Jones	Kieft	Norton
5	D. Taylor	D. Taylor	Cooper	Norton
8	G. F. Meharey	G. F. Meharey	Cooper	J.A.P.
11	F. Beart	L. Leston	Cooper	Norton
14	D. A. Haigh	D. A. Haigh	Cooper	J.A.P.
17	Barrett & Son	R. Barrett	Cooper	Norton
20	D. F. Latchford	To be nominated	Iota	J.A.P.
23	Equipe Nondescript	T. H. Shaddick	I.E.R.	J.A.P.
26	W. A. Jones	W. A. Jones	C.R.M.	J.A.P.
29	H. E. Douglas	H. E. Douglas	Cooper	J.A.P.
32	H. C. Taylor	H. C. Taylor	Cooper	J.A.P.
37	Acres Autos Ltd	H. R. Povah	Cooper	Norton
40	S. Foreman	S. Foreman	Cooper	J.A.P.
43	R. R. Jackson	S. Lewis-Evans	Cooper	Norton
46	R. A. Anderson	R. A. Anderson	Staride	Norton
50	Car Exchange (Brighton) Ltd	I. E. Raby	Cooper	Norton
52	A. Eccles	A. Eccles	Staride	Norton
56	A. V. Cowley	A. V. Cowley	Cooper	Norton
59	A. Zains	A. Zains	Cooper	Norton
62	A. J. Fergusson (S. Africa)	A. J. Fergusson	Cooper	Norton
65	Beels Racing Team (Holland)	H. Hutchinson	Cooper	Norton

Results:

1st.....	2nd.....	3rd.....
4th.....	5th.....	6th.....
Winner's Time.....		Speed.....m.p.h.



"Five-hundreds" leaving the grid for a Whit Sunday race. Coopers Nos. 59 and 8 are driven by I. E. Raby and G. F. Meharey.

Event No. 4.

RACE TWO

Start: 12.15 p.m.

Heat 2

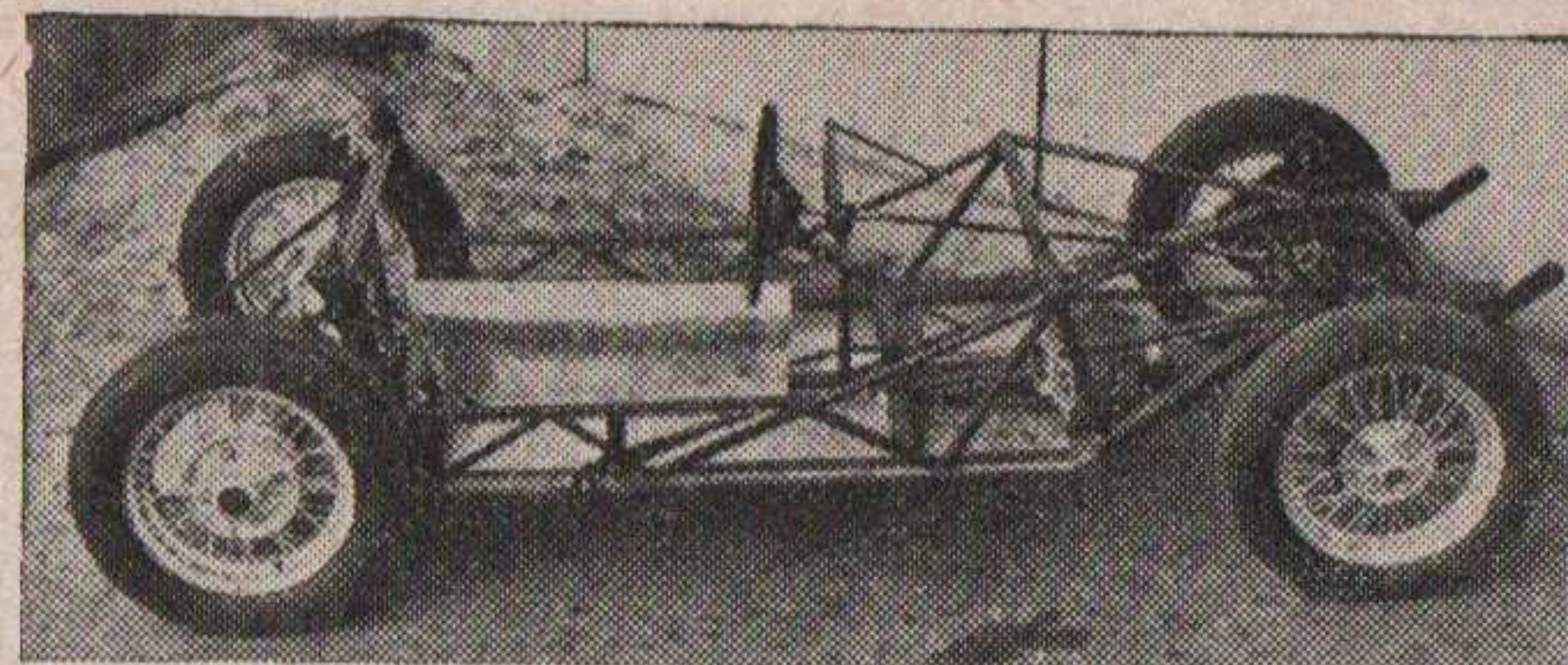
12 Laps

No.	Entrant	Driver	Car	Engine
2	Cooper Car Co Ltd	I. Bueb	Cooper	Coventry-Climax
4	P. Emery	P. Emery	Lotus	Coventry-Climax
6	A. Moore	J. Coombs	Lotus	Connaught
8	Mercury Stable	Major A. Mallock	Veritas	B.M.W.
10	P. D. Gammon	P. D. Gammon	Cooper	Coventry-Climax
12	Panda Racing Team	R. Watling-Greenwood	Cooper	Coventry-Climax
15	D. H. Swanton	D. H. Swanton	Lotus	Ford
17	Car Mart (Hastings)	D. J. Hayles	Lotus	Coventry-Climax
19	Elva Racing Team	R. L. Manwaring	Elva	L.R.G. Ford
21	C. G. Escott	C. G. Escott	Lester M.G.	M.G.
23	P. Riley	P. Riley	Lotus	M.G.
25	J. B. Naylor Ltd	B. Naylor	Lotus	Connaught
27	Ecurie Bullfrog	J. Horridge	Lister	Riley
29	H. B. Digby	H. B. Digby	Lotus	Ford

Results:

1st..... 2nd..... 3rd.....
4th..... 5th..... 6th.....

Winner's Time..... Speedm.p.h.



ELVA SPORTS RACING CHASSIS FRAME

THIS tubular space frame is built to accommodate various engine units and is made to accept proprietary components, and can be assembled without the use of extensive workshop facilities. Send for full particulars.

LONDON ROAD GARAGE (BEXHILL) LTD.

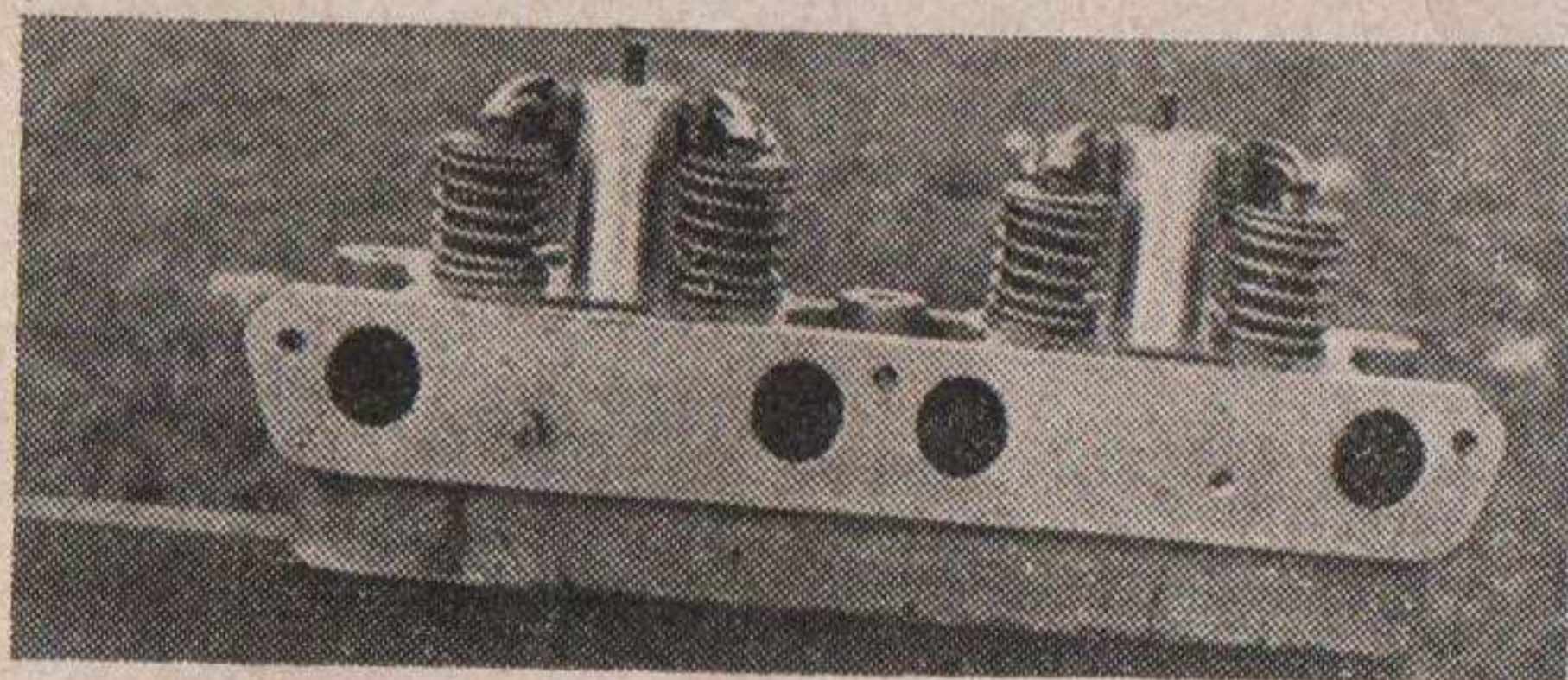
Incorporating ELVA ENGINEERING COMPANY

LONDON ROAD. BEXHILL-ON-SEA.

Telephone 203

THE L.R.G. OVERHEAD INLET VALVE CYLINDER HEAD

This precision built product is designed to replace the existing cylinder head of all Ford 8 and 10 engines manufactured between 1938 and 1953. Available with either 8:1 9:1, or 10:1 c.r. it uses 1 1/2 inch inlet valves and is supplied complete in every way, ready to fit. It gives 60% increase in power output. Send for further details.



Event No. 5.

RACE ONE

Start: 12.40 p.m.

Heat 3

10 Laps

No.	Entrant	Driver	Car	Engine
3	D. Truman	D. Truman	Cooper	Norton
6	R. K. Tyrrell	R. K. Tyrrell	Cooper	Norton
9	C. C. H. Davis	C. C. H. Davis	Cooper	Norton
12	D. Parker	D. Parker	Kieft	Norton
15	R. H. Ham	R. H. Ham	Arnott	Norton
18	T. Bridger	T. Bridger	Kieft	Norton
21	A. J. C. Newton	A. J. C. Newton	Cooper	Norton
24	B. A. Manning	B. A. Manning	Staride	J.A.P.
27	Peter Brown Autos	J. Brown	Martin Spl	Norton
30	D. H. Phillips	D. H. Phillips	Cooper	J.A.P.
34	Ecurie Heyward	C. W. A. Heyward	C.H.S.	Norton
38	Premier M.R.C.	P. J. Bourke/ A. F. Jacks	Cooper	J.A.P.
41	A. W. Harrison & Sons Ltd	R. E. D. Harrison	Cooper	Norton
44	P. A. Luke	P. A. Luke	Cooper	Norton
47	S. V. Chalmers	S. V. Chalmers	J.B.S.	J.A.P.
51	Greene & Mays Ltd	F. J. Mays	G.M.	J.A.P.
54	Premier M.R.C.	R. Bayton	Kieft	J.A.P.
57	G. W. Forster	G. W. Forster	Cooper	Norton
60	Cooper Car Co Ltd	J. Russell	Cooper	Norton
63	Curt Lincoln (Finland)	Curt Lincoln	Cooper	Norton
66	Beels Racing Team (Holland)	L. Beels	Cooper	Norton

Results:

1st..... 2nd..... 3rd.....
4th..... 5th..... 6th.....

Winner's Time..... Speedm.p.h.

L. F. WARD LTD.

OF THORNTON HEATH, SURREY

OFFICIAL RETAILERS FOR

BRISTOL :: M.G. :: MORRIS

STANDARD AND TRIUMPH

WE ALWAYS HAVE A GOOD SELECTION

:: OF USED CARS OF ALL TYPES ::

SELF DRIVE HIRE SERVICE

GRANGE ROAD GARAGE, THORNTON HEATH

THO 3347

(WEST END OFFICE: HANOVER COURT YARD, W.1.)
MAY 5253, 0146

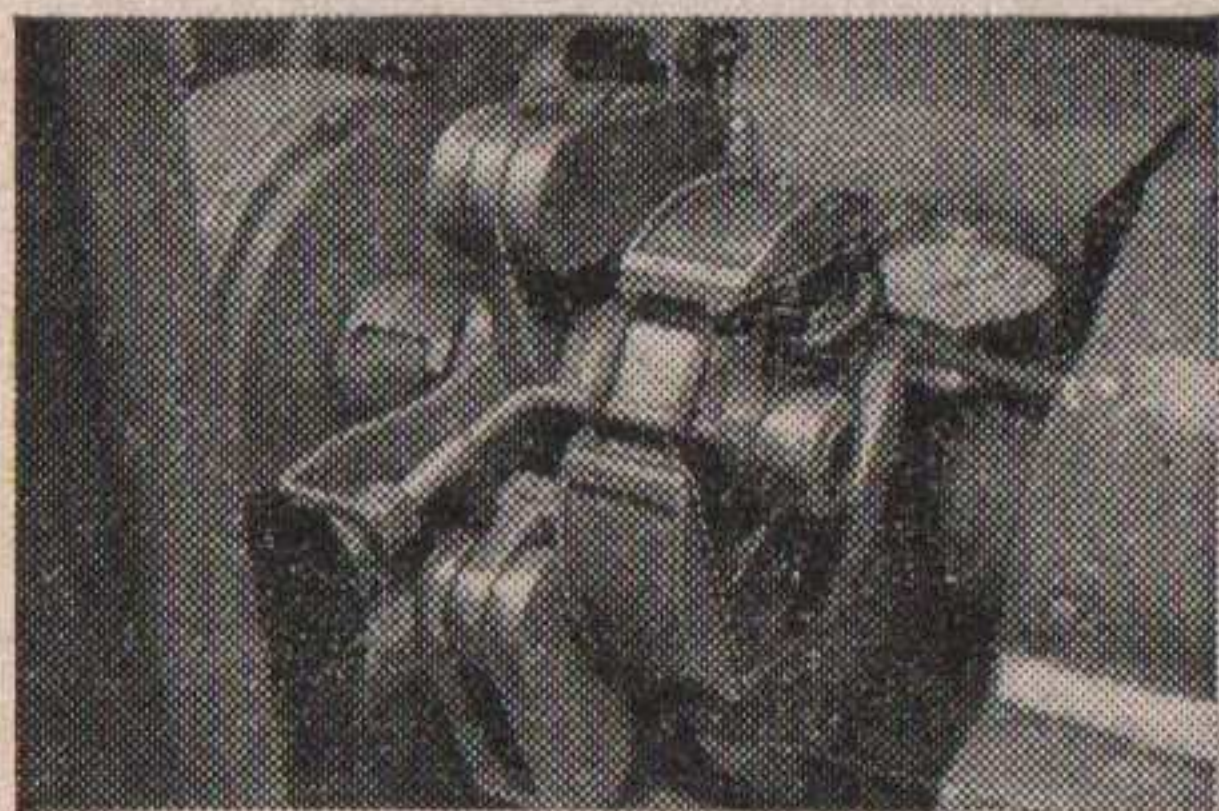
Background to Braking

Grand Prix Car

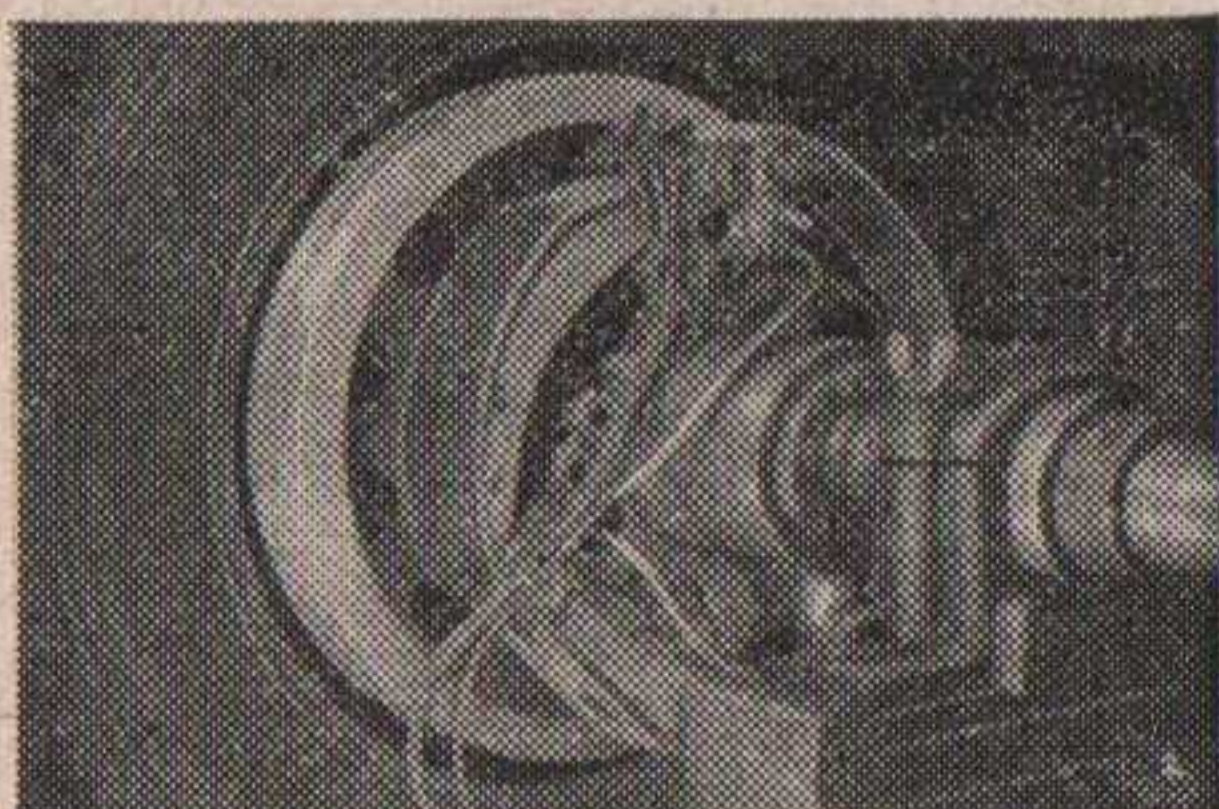
Melts

to a standstill

**RESEARCH EQUIPMENT USED
BY FERODO SCIENTISTS**



A special brake used for lining evaluation.



A lead sulphide Radiation-Detector measuring heat inside a brake assembly.

A car weighing 16 cwt. when brought to a stop from 120 m.p.h. will dissipate 860,000 ft./lb. of energy—sufficient if converted into heat, to melt over 4 lbs. of iron!

That gives you some idea of the problems facing Ferodo Scientists and technicians in their search for linings that can stand high temperatures . . . linings with a high resistance to fade.

It is this background of research and testing that has made Ferodo Anti-Fade Brake Linings tough, hard wearing, able to take lap after lap of punishment in the world's most hard fought races, trials and Grand Prix.

FERODO

ANTI-FADE Brake Linings

'Famed among the Famous'

FERODO LIMITED · CHAPEL-EN-LE-FRITH
A Member of the Turner & Newall Organisation

Event No. 6.

RACE THREE

The Rochester Cup Race

This race is open to any driver competing with a single seater racing car with an engine capacity in excess of 500 c.c. supercharged or unsupercharged.

Start: 1.08 p.m.

Part 1

15 Laps

No.	Entrant	Driver	Car	Engine
2	R. J. Chase	M. J. C. Keen	Cooper	Bristol
4	"Kangaroo Stable"	R. Cobden	Ferrari	Ferrari
6	M. Young	M. Young	Connaught	H.W.M. Alta
8	E. W. Holt	E. W. Holt	Connaught	Connaught
10	R. Gibson	R. Gibson	Connaught	Connaught
12	A. W. Birrell	A. W. Birrell	Cooper	Bristol
14	F. R. Gerard	F. R. Gerard	Cooper	Bristol
16	Cooper Car Co Ltd	J. Brabham	Cooper	Bristol
18	Equipe Devone	T. Kyffin	Cooper	Bristol
20	Gilbey Eng. Ltd.	R. F. Salvadori	Maserati	Maserati
22	J. Young	J. Young	Connaught	Connaught
24	J. Riseley-Pritchard	A. E. Brown	Connaught	Connaught
26	L. Marr	L. Marr	Connaught	Connaught
28	Emeryson Cars	P. R. Emery	Emeryson	Alta

Results:

1st..... 2nd..... 3rd.....

4th.. .. 5th..... 6th.....

Winner's Time..... Speedm.p.h.

Event No. 7.

RACE SIX

The Edwardian Trophy Race

This race is open to invited drivers competing with Veteran, Edwardian and Vintage cars.

Start: 1.40 p.m.

5 Laps

No.	Entrant	Car	Year	c.c.	handicap
1	J. Sears	Sunbeam	1914	3215	0 mins. 0 secs.
2	Sir F. Samuelson	Sunbeam	1914	3215	0 mins. 30 secs.
3	K. Neve	Humber	1914	3100	0 mins. 45 secs.
4	A. Brooke	Vauxhall	1914	4500	0 mins. 45 secs.
5	J. V. Bolster	Rolls-Royce	1911	7400	0 mins. 55 secs.
6	L. Lewis-Evans	Rolls-Royce	1911	7400	1 min. 15 secs.
7	W. Crooke	Mercedes	1908	8000	1 min. 15 secs.
8	L. Greene	Napier	1914	7500	1 min. 30 secs.
9	A. C. Bird	Lanchester	1904	4000	3 mins. 0 secs.

Results:

1st..... 2nd..... 3rd.....

4th..... 5th..... 6th.....

Winner's Time..... Speedm.p.h.

Event No. 8.

RACE FOUR The Kingsland Trophy Race

This race is open to any driver competing with a sports car with an engine capacity exceeding 1900 c.c.

Start: 2.12 p.m.

15 Laps

No.	Entrant	Driver	Car	Engine
40	A. G. Whitehead ..	A. G. Whitehead ..	Aston Martin DB3S	Aston Martin
41	P. J. Crabb	P. J. Crabb	Tojeiro	Bristol
42	G. H. & J. L. Rolls	G. Rolls	Tojeiro	Bristol
43	J. Maurice-Tew ..	J. Maurice-Tew ..	Fraser-Nash ..	Bristol
44	M. Young	M. Young	Lotus	Connaught
45	W. B. Black	W. B. Black / J. G. Sears	Lister	Bristol
46	M. Anthony	M. Anthony	Lotus	Bristol
47	D. S. Boston	D. S. Boston / E. Protheroe	Jaguar XK120C	Jaguar
48	Curt Lincoln (Finland)	Curt Lincoln	Jaguar XK120C	Jaguar
49	Mrs. R. Vickers ..	J. Barber	Jaguar XK120C	Jaguar
50	G. Houel (France)	G. Houel	Maserati	Maserati
51	G. H. Lister & Sons	A. Scott-Brown ..	Lister	Bristol
52	Gilbey Eng. Ltd ..	R. F. Salvadori ..	Maserati	Maserati
53	F. C. Davis	F. C. Davis	Lotus	Bristol
Reserves:				
54	The Six Mile Stable	N. Cunningham Reid	Lister	Bristol
55	Equipe Devone ..	T. Kyffin	Cooper	Bristol
56	Equipe Devone ..	B. Halford	H.W.M.	Alta

Results:
 1st..... 51 2nd..... 46 3rd..... 48
 4th..... 52 5th..... 49 6th..... 56
 Winner's Time 15m 56.2 sec Speed 70.03 m.p.h.

COLLECTION IN AID OF THE ST. JOHN AMBULANCE BRIGADE

The St. John Ambulance Brigade are at hand to serve the competitors and the public who attend the races at Brands Hatch; the Brigade members from Farningham, Dartford and Northfleet are on duty regularly, and maintain three ambulances, for the upkeep of which the Brigade relies on the generosity of the public we serve. Their duties include first aid, and ambulance provision for all who need it. The members are entirely voluntary, accepting no personal payment, all proceeds of collections being devoted to the purchase and maintenance of equipment, first aid requisites and ambulances.

During last year over 2000 hours of duty were performed at this circuit by ambulance members, helped by the nurses; this in addition to an already crowded service in other directions, including road and street accidents, when called upon.

*YOUR KIND SUPPORT OF THE COLLECTION TO BE MADE ON
AUGUST BANK HOLIDAY WILL BE APPRECIATED.*

Event No. 9.

RACE THREE

Start: 2.47 p.m.

Part 2

15 Laps

No.	Entrant	Driver	Car	Engine
2	R. J. Chase	M. J. C. Keen	Cooper	Bristol
4	"Kangaroo Stable"	R. Cobden	Ferrari	Ferrari
6	M. Young	M. Young	Connaught	H.W.M. Alta
8	E. W. Holt	E. W. Holt	Connaught	Connaught
10	R. Gibson	R. Gibson	Connaught	Connaught
12	A. W. Birrell	A. W. Birrell	Cooper	Bristol
14	F. R. Gerard	F. R. Gerard	Cooper	Bristol
16	Cooper Car Co Ltd	J. Brabham	Cooper	Bristol
18	Equipe Devone ..	T. Kyffin	Cooper	Bristol
20	Gilbey Eng. Ltd ..	R. F. Salvadori ..	Maserati	Maserati
22	J. Young	J. Young	Connaught	Connaught
24	J. Riseley-Pritchard	A. E. Brown	Connaught	Connaught
26	L. Marr	L. Marr	Connaught	Connaught
28	Emeryson Cars ..	P. R. Emery	Emeryson	Alta

Results:
 1st..... 20 2nd..... 14 3rd..... 24
 4th..... 34 5th..... 36 6th..... 8
 Winner's Time 15m 29.8 sec Speed 72.01 m.p.h.

Results of The Rochester Cup Race

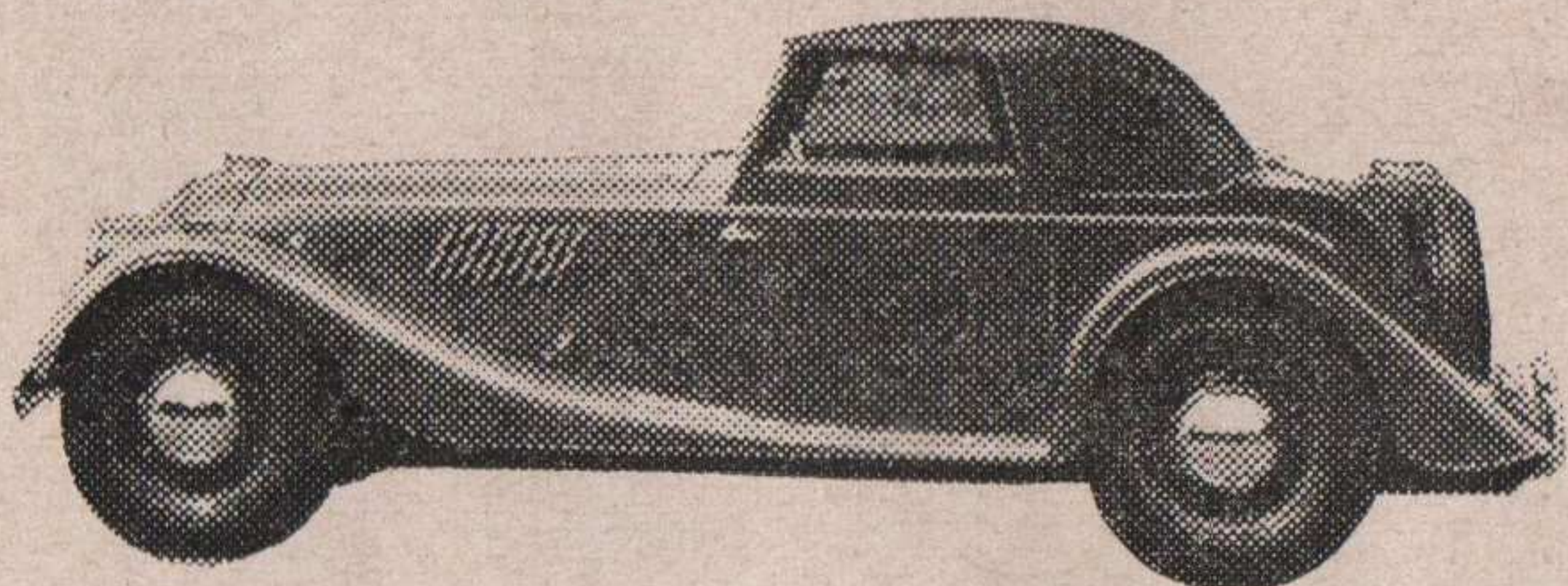
Based on Aggregate Times in the Two Races

1st..... 14 2nd..... 3rd.....
 4th..... 5th..... 6th.....



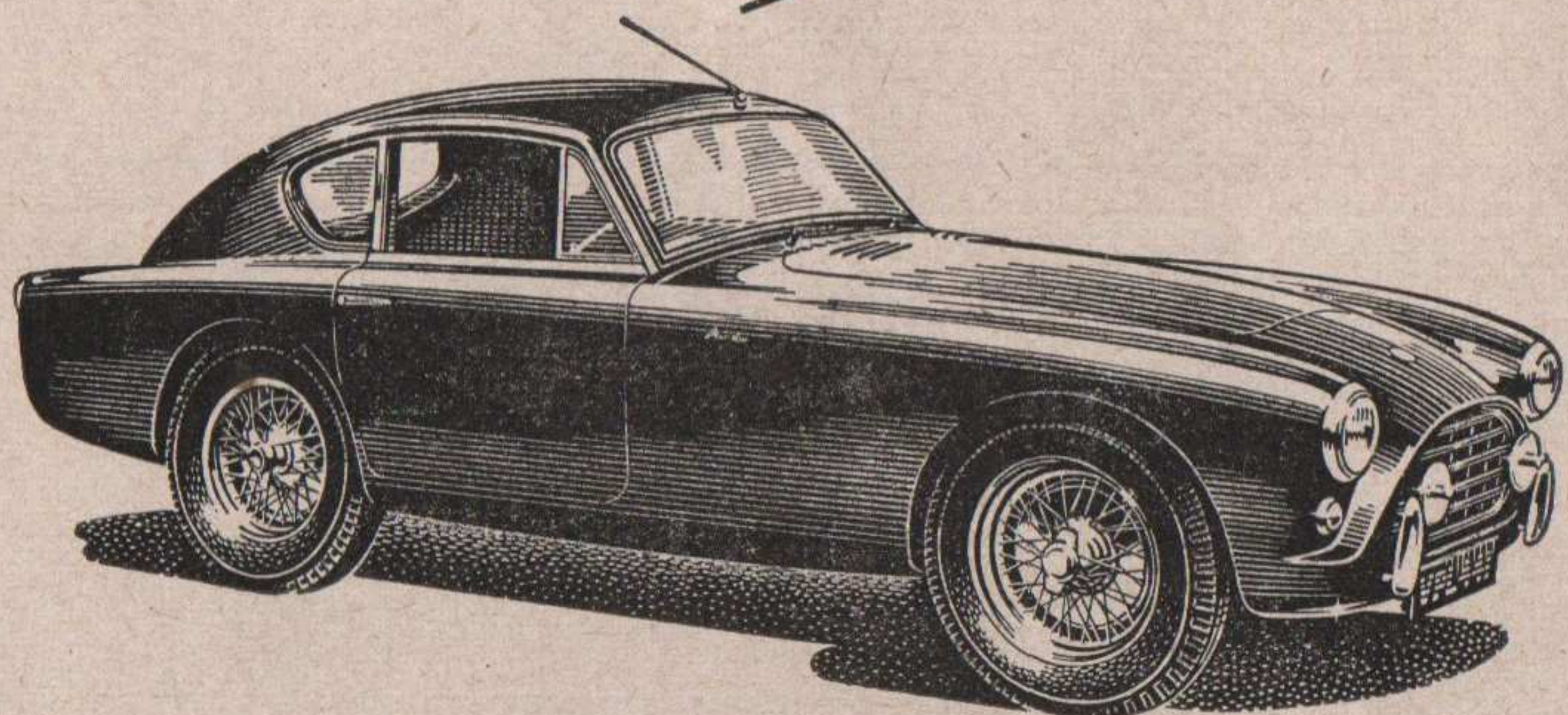
Rob Gerard leads the field into Clearways with his Cooper-Bristol. The Bristol engine has been enlarged from 2 litres to 2.2 litres to increase output.

JOHNSON & BROWN



DISTRIBUTORS FOR

MORGAN &
A. C. CARS



THE ACECA

AUSTIN - HEALY : SIMCA : VOLKSWAGEN
LAMBRETTA : N.S.U. STOCKISTS
MESSERSCHMITT CABIN SCOOTER DISTRIBUTORS

Showrooms :

268-270 HIGH STREET, BROMLEY.

Works :

RINGERS ROAD, BROMLEY.

Tel: RAVensbourne 8841-2

Tel: RAVensbourne 6479

Event No. 10.

RACE ONE

Start: 3.22 p.m.

Second Final

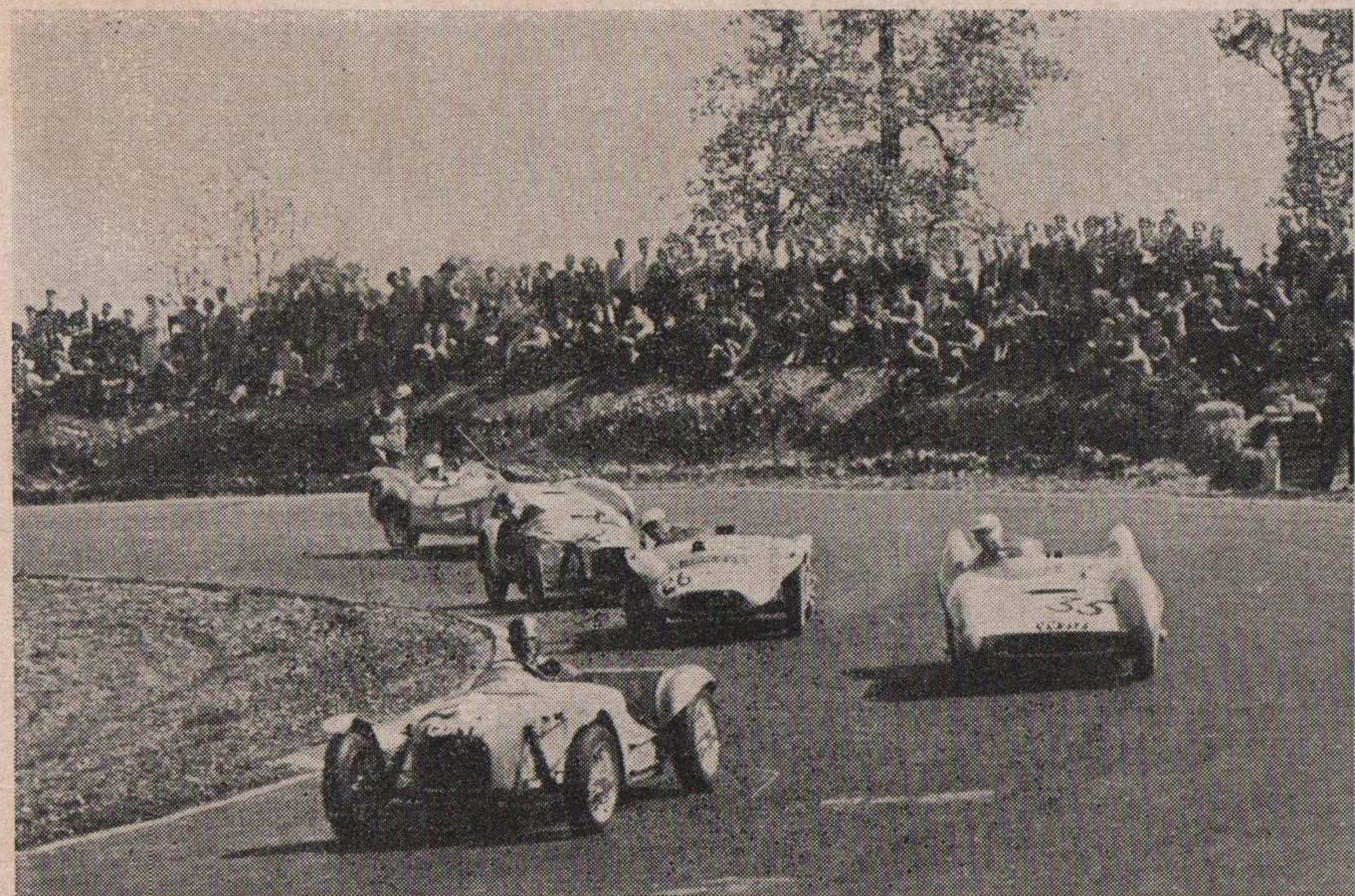
12 Laps

No.	Driver	No.	Driver
.....
.....
.....
.....
.....
.....
.....
.....
.....
.....
.....
.....
.....
.....
.....
.....
.....

Results:

1st.....	2nd.....	3rd.....
4th.....	5th.....	6th.....

Winner's Time..... Speedm.p.h.



A strong force of Lotus cars, streamlined Mark VIII (35 and 25) and Mark VI (leading and 32), jostle Peter Gammon in the Ford-engined Elva on Druids Hill Bend. This bend is a favourite vantage point.

*If you like
motor racing
you must*

READ

**MOTOR
RACING**

PUBLISHED MONTHLY 2/-

On the 3rd Thursday of each month from all Newsagents or direct from
PEARL, COOPER LTD., 48, CHANDOS PLACE, LONDON, W.C.2

Event No. 11.

RACE TWO
The Air Kruise Trophy Race
For The B.R.S.C.C. National 1500 c.c. Sports Car
Championship

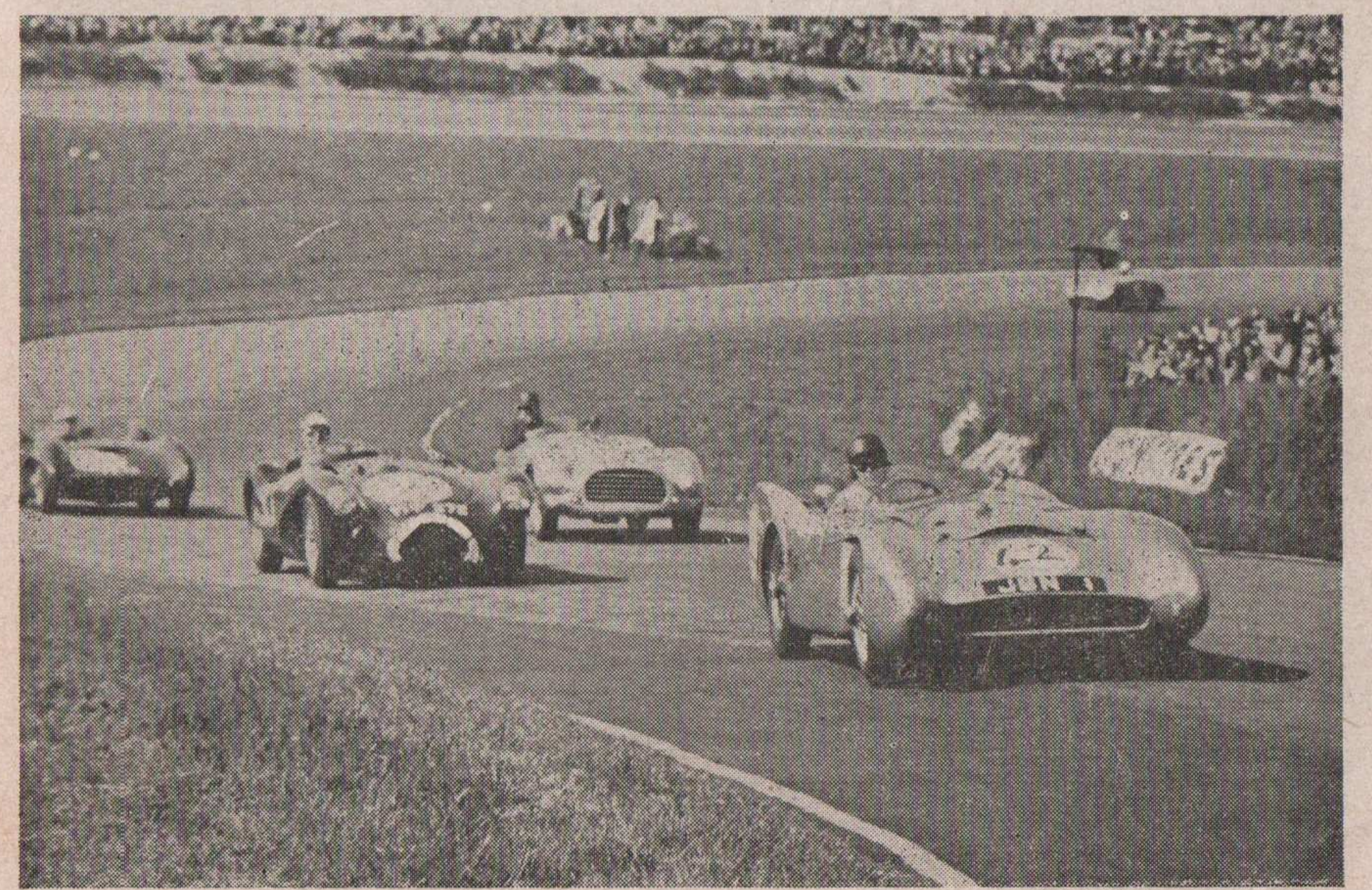
Start: 3.52 p.m. Final 16 Laps

No.	Driver	No.	Driver
28	Chapman	22	A Nurse
1	Russell	9	Hackney Low
2	Burt	6	Coombs
18	L. Leston	33	Kastling
3	S. Blandon	4	P. Emery
11	Jopp	35	Stacy
10	P. Gammon	19	Hawdrey

Reserves:

Results:

1st..... 2nd..... 3rd.....
4th..... 5th..... 6th.....
Winner's Time..... Speedm.p.h.



John Naylor in his ex-John Coombs Lotus-Connaught is ahead of Les Leston in Peter Bell's Connaught as the one-and-a-half-litres sweep through Clearways.

FORTHCOMING EVENTS

at

BRANDS HATCH

CAR MEETINGS

Sunday	September 4th
Sunday	October 9th
Boxing Day	December 26th

MOTOR CYCLE MEETINGS

Sunday	August 21st
Sunday	September 18th
Sunday (NATIONAL)	OCTOBER 2nd

— ADVERTISING —

Enquiries for Advertising in the season's programmes should be made to:-

Pearl, Cooper Ltd.,

48, Chandos Place, Strand, W.C.2.

Telephone: TEMple Bar 8111

263 MEDIUM REGIMENT

R.A. (T.A.) L.A.D.

R.E.M.E. DETACHMENT

105, MINET ROAD, BRIXTON, S.W.9.

The R.E.M.E. detachment located in the paddock consists of volunteers from the above unit. Their services are available to help drivers and mechanics with light repairs and recovery. Their equipment includes a machinery lorry, welding gear and a recovery vehicle.

There are vacancies in the unit for tradesmen volunteers in the following trades:

Fitters, Vehicle Mechanics, Welders and Sheet Metal Workers.

Full details can be obtained from the Officer Commanding at the above address, or in the paddock after the meeting.

The British Racing & Sports Car Club Ltd.

Incorporating the 500 Club

Patron: The Rt. Hon. THE EARL HOWE, P.C., C.B.E., V.D.

General Secretary:
K. A. Gregory

35, Strand,
London, W.C.2
Tra 1352.

APPLICATION FOR MEMBERSHIP

Name in Full
(BLOCK LETTERS)
Address

Occupation.....

Home.....
Tel. No.
Office

Nationality..... Date of Birth.....

I hereby make application to become a member of the British Racing & Sports Car Club Limited and if elected, I undertake to abide by the Rules of the Club.

I enclose herewith my cheque or money order for the Annual Subscription of £2.2.0

Signature..... Date.....

We the undersigned, being fully paid up members of the British Racing and Sports Car Club Ltd., have a personal knowledge of the above applicant and consider him to be a fit and proper person to become a member of the British Racing & Sports Car Club Ltd.

Proposer's Signature.....

Seconder's Signature.....

NOTES

If the applicant does not know any member to sign above please state below the name and address of a responsible person to whom reference may be made.

Name.....

Address.....

Occupation.....

It is not a Condition of Membership that members shall own or construct a 500 c.c. car, but if you own or are building a car please give details below.

DETAILS OF CAR

Make..... Year..... Engine.....

No. of Cylinders..... General Details.....

If possible please send to the Secretary now or later a passport size photo for Club records and to help the Secretary to recognise new members.

FOR OFFICE USE

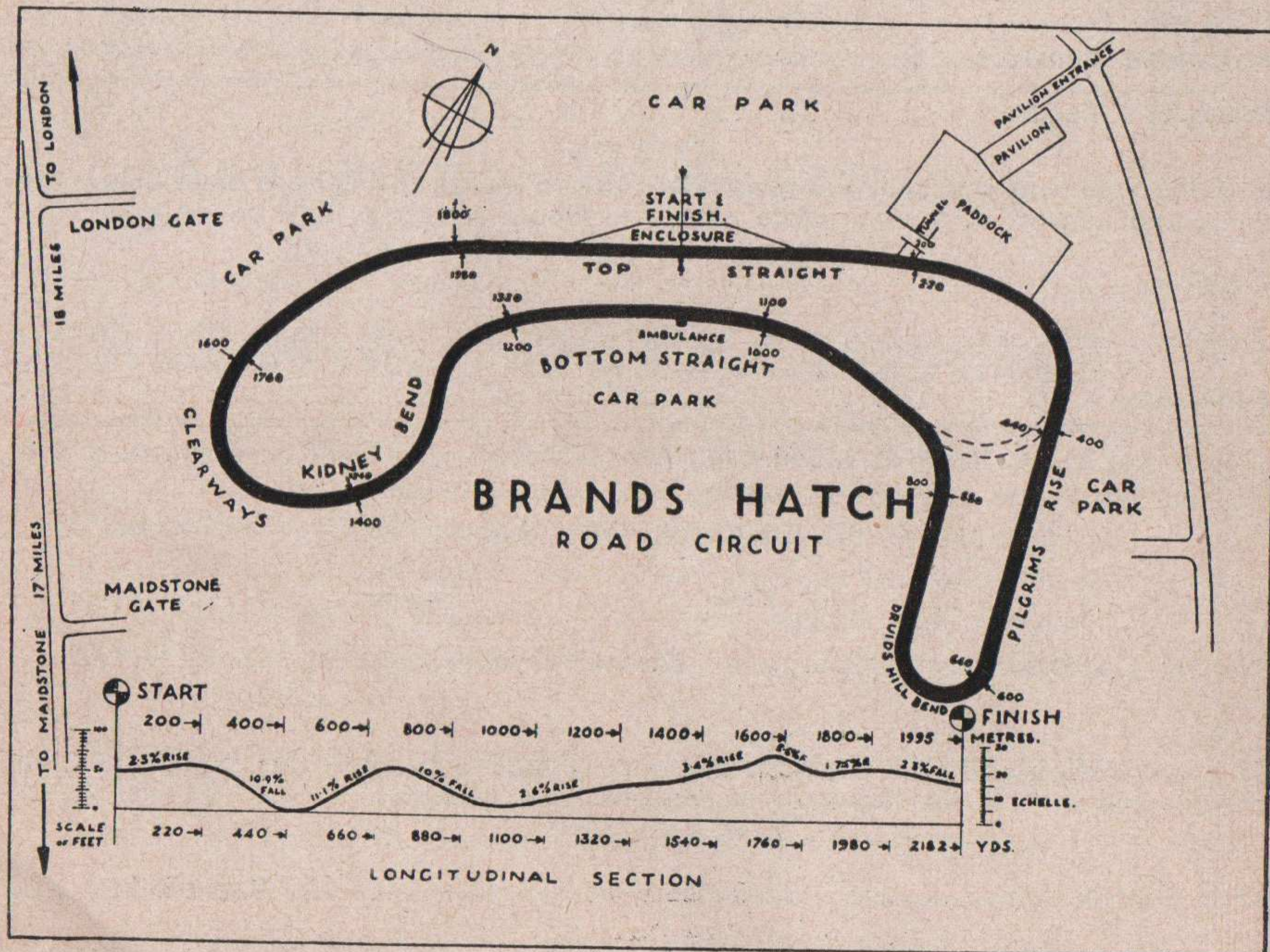
Date Elected..... Badge Sent..... Reg. No.....

Entered in Register..... Rules Sent..... Signed by Secretary.....

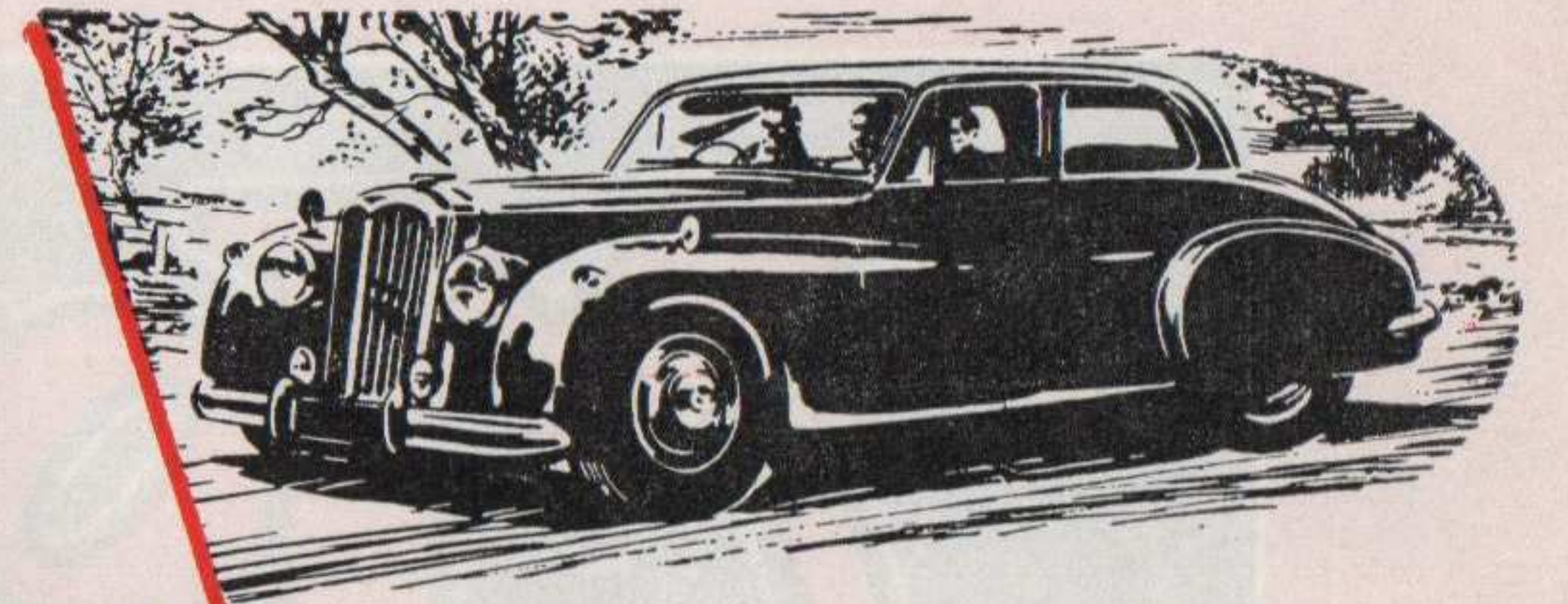
BRANDS HATCH SPEED TABLE—1 LAP=1.24 MILES

Time secs.	Speed m.p.h.	Time secs.	Speed m.p.h.	Time secs.	Speed m.p.h.	Time secs.	Speed m.p.h.	Time secs.	Speed m.p.h.
55.0	81.16	59.0	75.66	63.0	70.86	67.0	66.63	71.0	62.87
55.2	80.87	59.2	75.41	63.2	70.63	67.2	66.43	71.2	62.70
55.4	80.58	59.4	75.15	63.4	70.41	67.4	66.23	71.4	62.52
55.6	80.29	59.6	74.90	63.6	70.19	67.6	66.04	71.6	62.35
55.8	80.00	59.8	74.65	63.8	69.97	67.8	65.84	71.8	62.17
56.0	79.71	60.0	74.40	64.0	69.75	68.0	65.65	72.0	62.00
56.2	79.43	60.2	74.15	64.2	69.53	68.2	65.45	72.2	61.83
56.4	79.15	60.4	73.91	64.4	69.32	68.4	65.26	72.4	61.66
56.6	78.87	60.6	73.66	64.6	69.10	68.6	65.07	72.6	61.49
56.8	78.59	60.8	73.42	64.8	68.89	68.8	64.88	72.8	61.32
57.0	78.32	61.0	73.18	65.0	68.68	69.0	64.70	73.0	61.15
57.2	78.04	61.2	72.94	65.2	68.47	69.2	64.51	73.2	60.98
57.4	77.77	61.4	72.70	65.4	68.26	69.4	64.32	73.4	60.82
57.6	75.50	61.6	72.47	65.6	68.05	69.6	64.14	73.6	60.65
57.8	77.23	61.8	72.23	65.8	67.84	69.8	63.95	73.8	60.49
58.0	76.97	62.0	72.00	66.0	67.64	70.0	63.67	74.0	60.32
58.2	76.70	62.2	71.77	66.2	67.43	70.2	63.59	74.2	60.16
58.4	76.44	62.4	71.54	66.4	67.23	70.4	63.41	74.4	60.00
58.6	76.18	62.6	71.31	66.6	67.03	70.6	63.23	74.6	59.84
58.8	75.92	62.8	71.08	66.8	66.83	70.8	63.05	74.8	59.68
								75.0	59.52

$$\text{SPEED (in m.p.h.)} = \frac{1.24 \times 3600 \times \text{No. of laps}}{\text{TIME (in seconds)}}$$

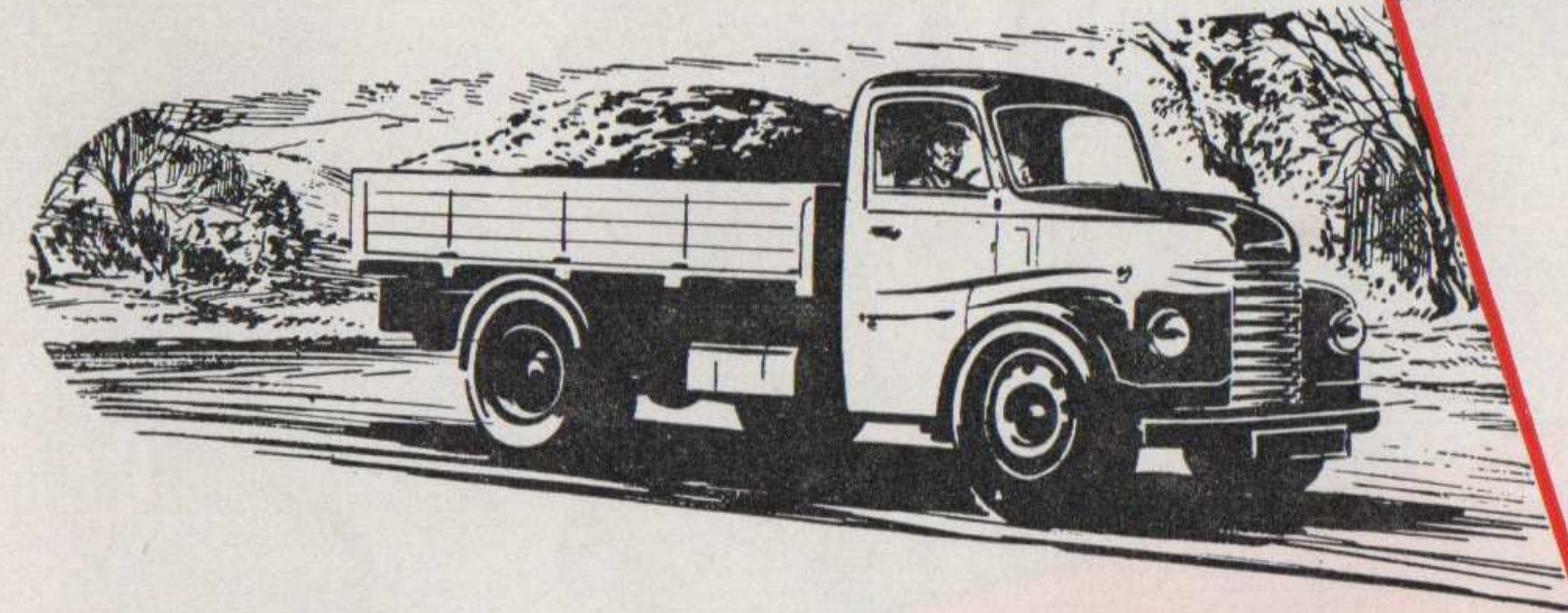


Whatever you own



... no waiting

for electrical repairs



For most vehicles after 1936 you can obtain a Factory reconditioned replacement Magneto, Distributor, Starter, Dynamo or other electrical unit immediately. It prevents that idle waiting period while a repair is undertaken.

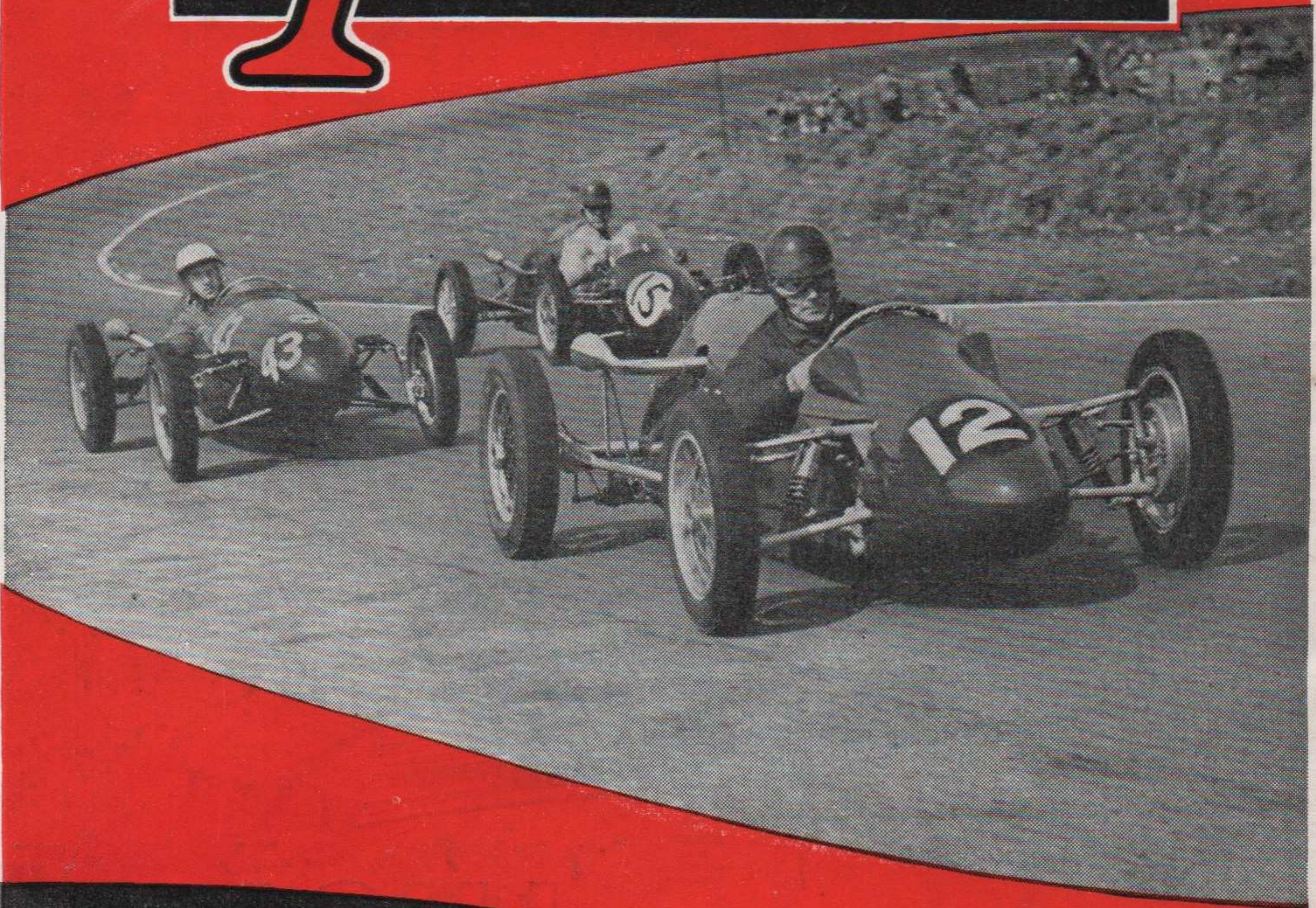
★ See your nearest garage or LUCAS agent for details

**LUCAS
B90**

**IMMEDIATE EXCHANGE
SERVICE**

JOSEPH LUCAS LTD • BIRMINGHAM 19

The Motor



*For the
Best Reports and
Action Pictures*

WEDNESDAYS
ONE SHILLING